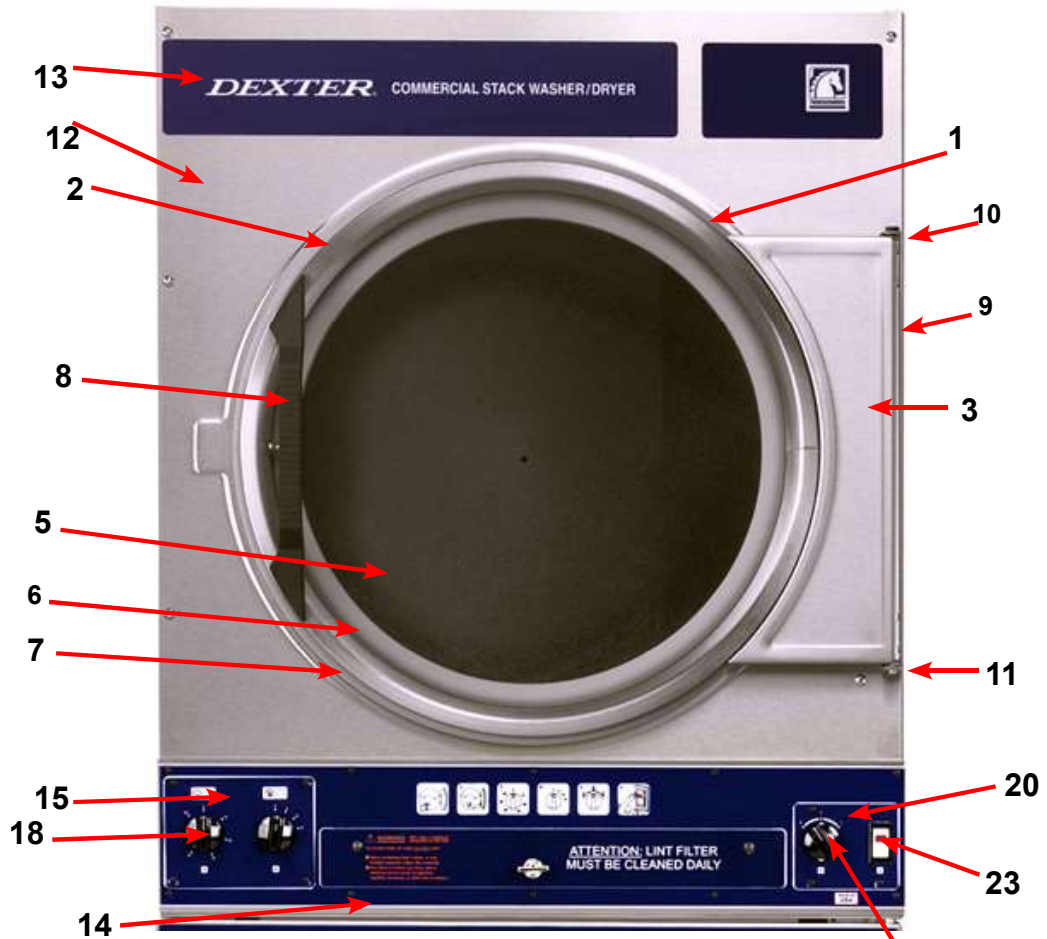

Section 5:

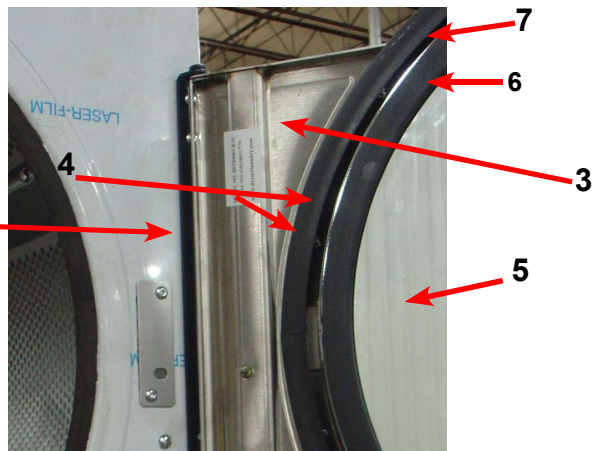
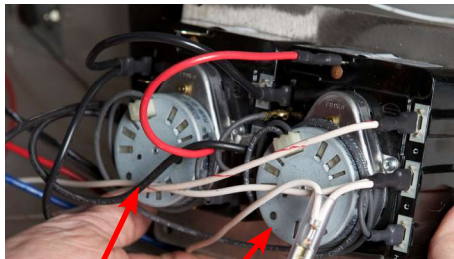
Dryer Parts Data

Dryer Cabinet Group Before Serial #232998

	Description	Part Number	Qty
1	Loading Door Complete SS/Brushed SS/Gray	9960-256-030	1
1	Loading Door Complete SS/Chrome/Blk	9960-256-037	1
2	Door Assy, Loading (Ring only) Brushed SS	9960-255-008	1
2	Door Assy, Loading (Ring only) Chrome	9960-255-016	1
3	Plate Assy, Hinge (SS)	9982-280-011	1
4	Screw Hinge to Door	9545-012-015	4
*	Nut, Hinge to Door	8640-413-002	4
5	Glass, Door	9212-002-003	1
6	Gasket, Door Glass (Gray)	9206-164-009	1
6	Gasket, Door Glass (Black)	9206-413-001	1
*	Support Door Glass	9548-117-000	1
7	Gasket, Door Outer Rim (Gray)	9206-420-002	1
7	Gasket, Door Outer Rim (Black)	9206-420-003	1
8	Handle, Loading Door	9244-082-001	1
*	Screw, Handle	9545-018-017	2
*	Stud Door Catch	9531-033-001	1
*	Nut-Hex, #10-32	8640-413-001	1
*	Nut, Acorn	8640-413-003	1
*	Catch, Loading Door	9086-015-002	1
9	Strap, Hinge (Gray)	9544-047-007	1
9	Strap, Hinge (Black)	9544-047-011	1
10	Screw, Hinge to Door	9545-052-001	1
11	Washer-Fiber/Plastic	8641-436-003	1
12	Front Panel Assy	9989-468-001	1
*	Insulation-Front Panel, Top Half	9277-053-001	1
*	Insulation-Front Panel, Bottom Half	9277-053-002	1
13	Nameplate - Dexter Washer/Dryer	9412-102-001	1
14	Overlay on Escutcheon OPL W/D	9435-010-001	1
14	Escutcheon-Dryer OPL	9141-155-001	1
*	Screw-TRHD Torx, 6BSDx1/2,Blk	9545-031-009	10
15	Plate Controls OPL Lefthand side	9452-686-001	1
*	Screw 8-32x5/16	9545-010-010	4
16	Timer Dry	9571-350-002	1
17	Timer Cooldown	9571-350-002	1
18	Knob Black Control	9307-176-001	2
19	Plate Control OPL Righthand side	9452-687-001	1
*	Screw, 6BSDx1/2 Blk	9545-031-009	4
20	Decal Temp Start OPL W/D	8527-117-001	1
21	Knob Temp Control	9307-176-001	1
22	Thermostat	9576-209-003	1
*	Screw 6-32x5/16	9545-044-006	2
*	Bushing for wire	9053-067-002	1
23	Start Push Type	9539-460-001	1
*	Cabinet Touch Up Paint (White)	9472-001-013	1

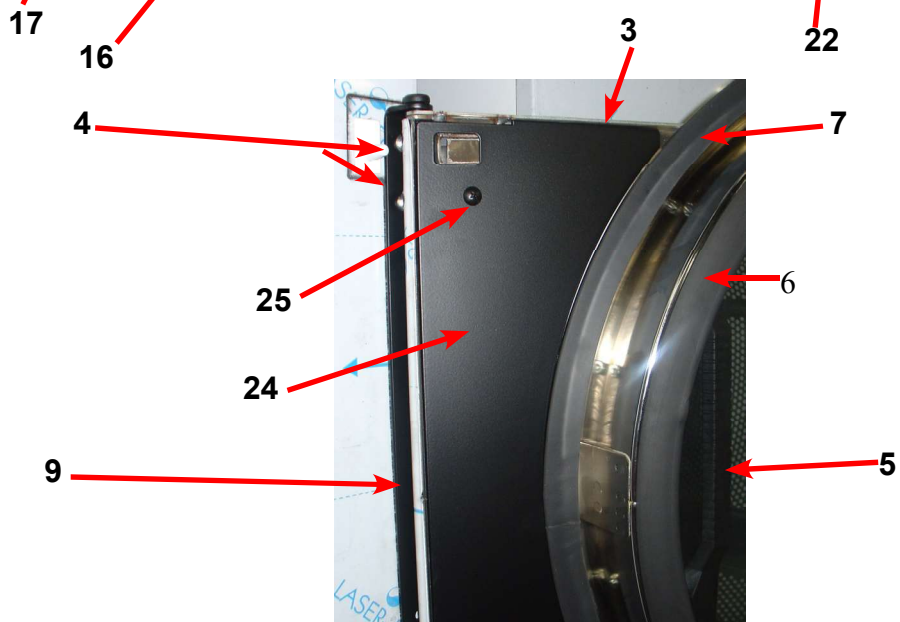
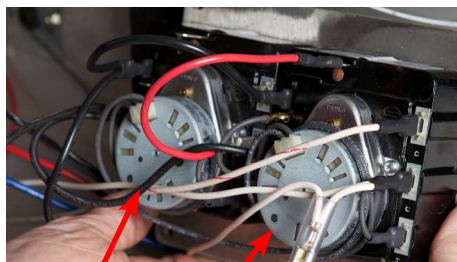


15



Dryer Cabinet Group After Serial #232998

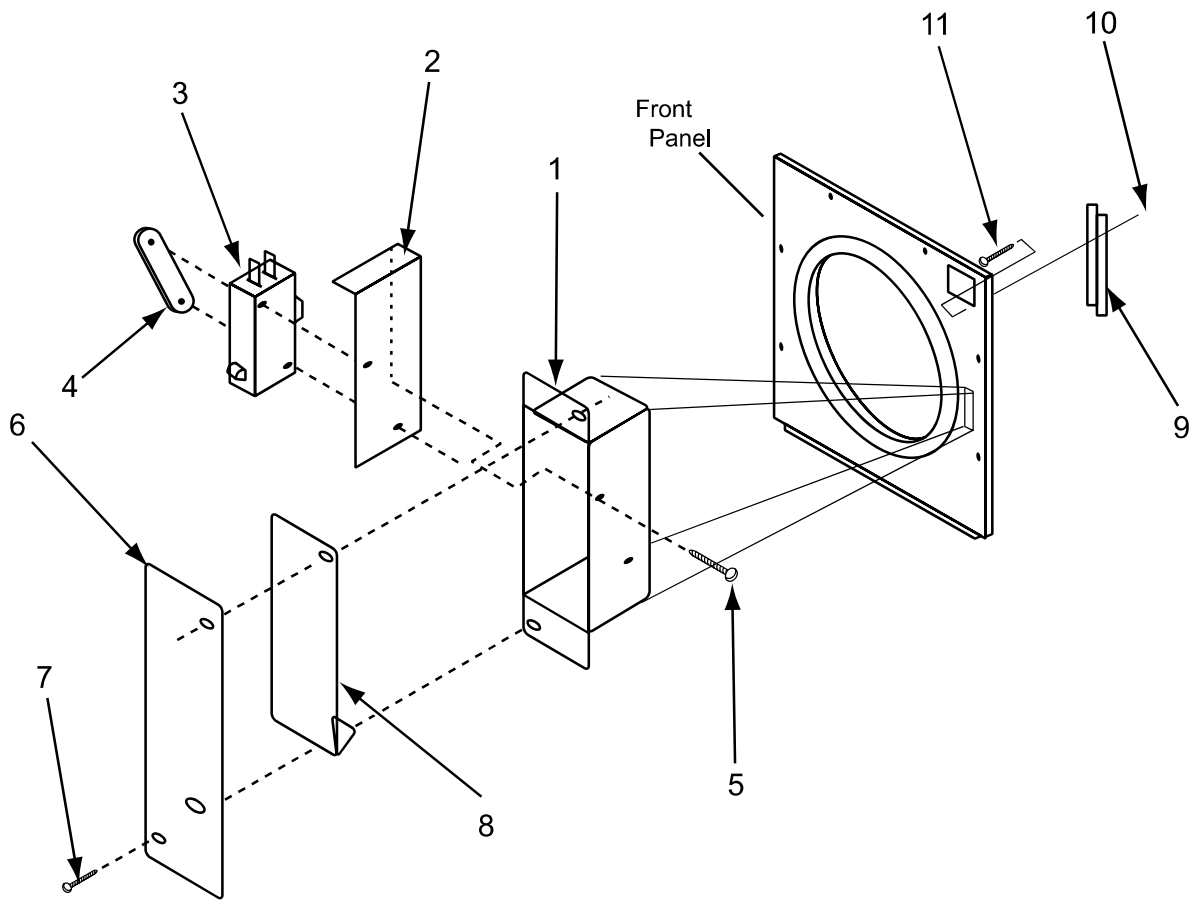
	Description	Part Number	Qty
1	Loading Door Complete SS/Brushed SS/Gray	9960-256-030	1
1	Loading Door Complete SS/Chrome/Blk	9960-256-035	1
2	Door Assy, Loading (Ring only) Brushed SS	9960-255-008	1
2	Door Assy, Loading (Ring only) Chrome	9960-255-016	1
3	Plate Assy, Hinge (SS)	9982-280-011	1
4	Screw Hinge to Door	9545-012-015	4
*	Nut, Hinge to Door	8640-413-002	4
5	Glass, Door	9212-002-003	1
6	Gasket, Door Glass (Gray)	9206-164-009	1
6	Gasket, Door Glass (Black)	9206-413-001	1
*	Support Door Glass	9548-117-000	1
7	Gasket, Door Outer Rim (Gray)	9206-420-002	1
7	Gasket, Door Outer Rim (Black)	9206-420-003	1
8	Handle, Loading Door	9244-082-001	1
*	Screw, Handle	9545-018-017	2
*	Stud Door Catch	9531-033-001	1
*	Nut-Hex, #10-32	8640-413-001	1
*	Nut, Acorn	8640-413-003	1
*	Catch, Loading Door	9086-015-002	1
9	Strap, Hinge (Gray)	9544-047-007	1
9	Strap, Hinge (Black)	9544-047-011	1
10	Screw, Hinge to Door	9545-052-001	1
11	Washer-Fiber/Plastic	8641-436-003	1
12	Front Panel Assy	9989-468-001	1
*	Insulation-Front Panel, Top Half	9277-053-001	1
*	Insulation-Front Panel, Bottom Half	9277-053-002	1
13	Nameplate - Dexter Washer/Dryer Black	9412-202-001	1
14	Overlay on Escutcheon OPL W/D Black	9435-036-001	1
14	Escutcheon-Dryer OPL	9141-155-001	1
*	Screw-TRHD Torx, 6BSDx1/2,BLK	9545-031-009	10
15	Plate Controls OPL Lefthand side	9452-686-001	1
15	Decal Manual Timer OPL W/D Black	8527-153-001	1
*	Screw 8-32x5/16	9545-010-010	4
16	Timer Dry	9571-350-002	1
17	Timer Cooldown	9571-350-002	1
18	Knob Black Control	9307-176-001	2
19	Plate Control OPL Righthand side	9452-687-001	1
*	Screw, 6BSDx1/2 Blk	9545-031-009	4
20	Decal Temp Start OPL W/D Black	8527-154-001	1
21	Knob Temp Control	9307-176-001	1
22	Thermostat	9576-209-003	1
*	Screw 6-32x5/16	9545-044-006	2
*	Bushing for wire	9053-067-002	1
23	Start Push Type	9539-460-001	1
24	Cover-Hinge, Black	9074-341-002	1
25	Screws-TRHDRCR, 10B x 3/8, Black	8636-018-001	2



Dryer Cabinet Group Continued

Key	Description	Part Number	Qty
1	Nameplate - Dexter Washer/Dryer	9412-133-001	1
2	Lint Drawer Assy Complete W/Front	9866-004-010	1
*	Lint Screen Assy w/o Front	9805-029-002	1
*	Lint Drawer Front (Aluminum)	9974-010-001	1
3	Overlay, Lint Drawer	9435-003-011	1
*	Screen (Course)	9555-057-002	1
*	Screen (Fine Mesh)	9555-057-003	1
*	Felt-Seal (back of lint screen)	9532-074-003	1
*	Screw-Lint screen strap hold down	9545-008-001	14
4	Thumbturn locking assembly for Lint Screen	8650-026-002	1
5	Door Switch	9539-461-001	1
*	Cabinet Cover	9074-261-001	1
*	Insulation, Cabinet Cover	9277-041-011	1

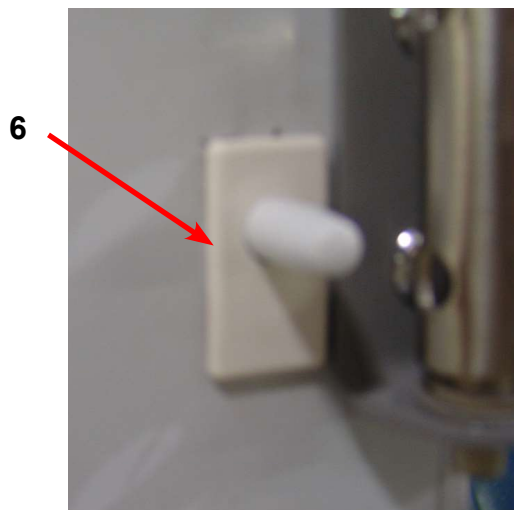




Key	Description	Part Number	Qty
1	Box-Door Switch	9041-076-002	1
2	Shield-Door Switch	9550-159-001	1
3	Door Switch	9539-461-001	1
4	Twin Nut Special	8640-401-001	1
5	Screw- 4-40x5/8	9545-020-001	2
6	Cover-Switch Box	9074-255-001	1
7	Screw-TRHDTORX, 10ABx3/4	9545-008-020	2
8	Acuator-Door Switch	9008-004-002	1
9	Conduit - Special	6068-043-001	1
10	Screw, 10-32x1/2	9545-012-003	2
11	Nut, Elastic Stop 10-32	8640-413-004	2
*	Gromet, 1/4	9029-037-001	1
*	Wire-BLK, 45"	8220-001-221	1
*	Wire-BLU, 45"	8220-001-222	1

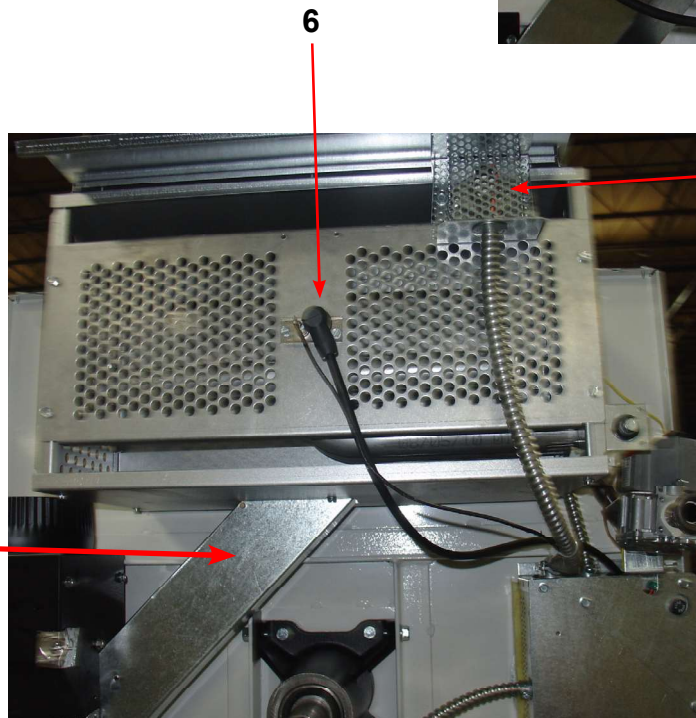
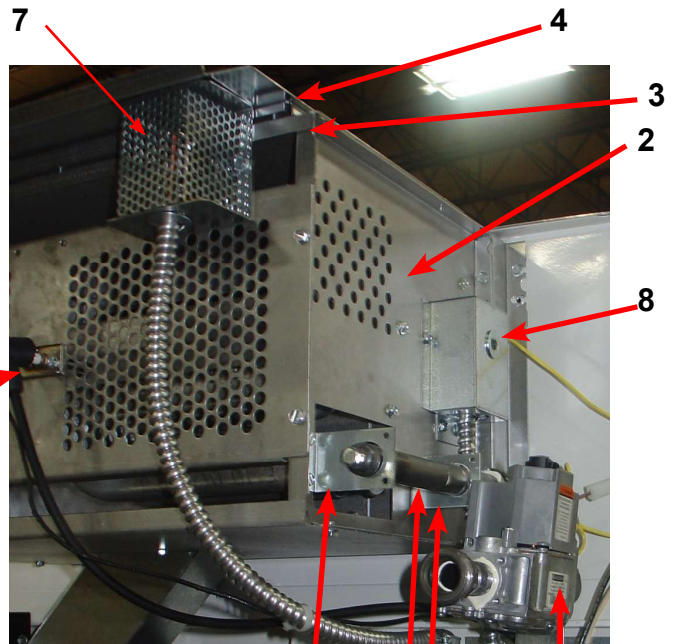
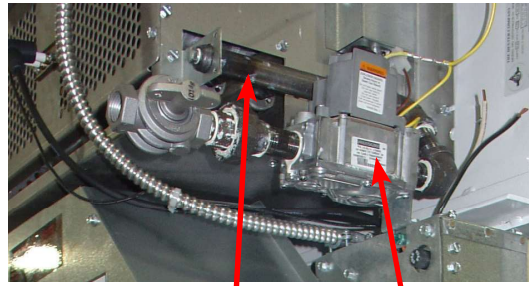
Dryer Cabinet Group Continued After Serial #232998

Key	Description	Part Number	Qty
1	Nameplate - Dexter Washer/Dryer	9412-202-001	1
2	Lint Drawer Assy Complete W/Front	9866-004-013	1
*	Lint Screen Assy w/o Front	9805-029-002	1
*	Lint Drawer Front (Aluminum)	9974-010-001	1
3	Overlay, Lint Drawer	9435-029-002	1
*	Screen (Course)	9555-057-002	1
*	Screen (Fine Mesh)	9555-057-003	1
*	Felt-Seal (back of lint screen)	9532-074-003	1
*	Screw-Lint screen strap hold down	9545-008-001	14
4	Thumbturn locking assembly for Lint Screen	8650-026-002	1
5	Overlay on Escutcheon OPL W/D Black	9435-036-001	1
6	Door Switch	9539-487-001	1



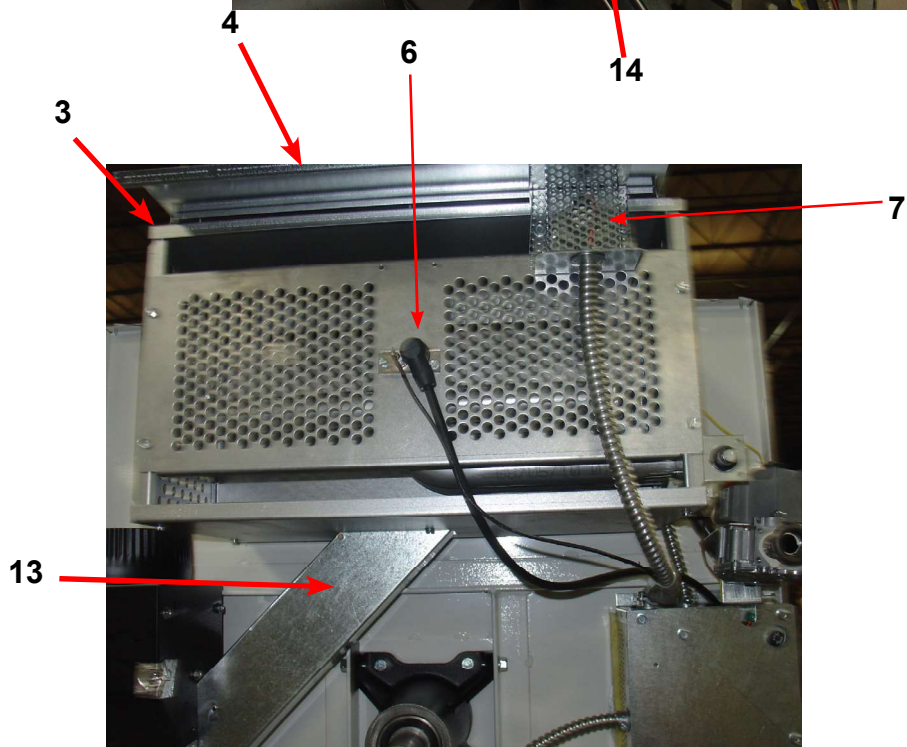
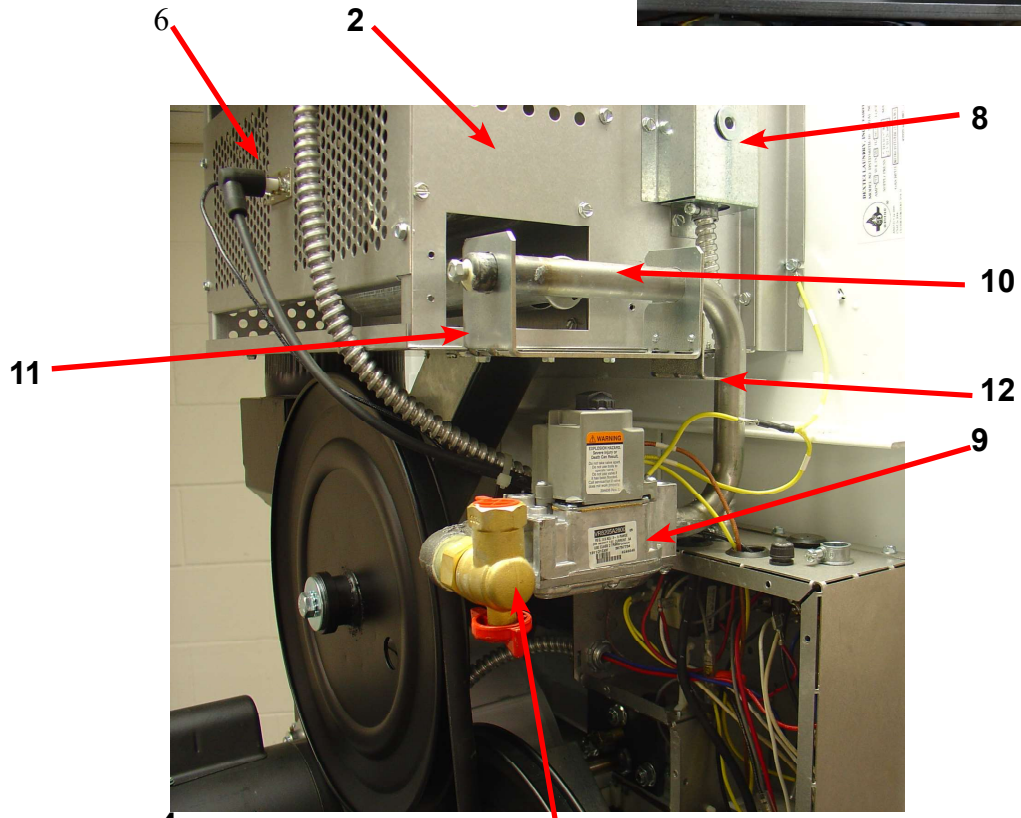
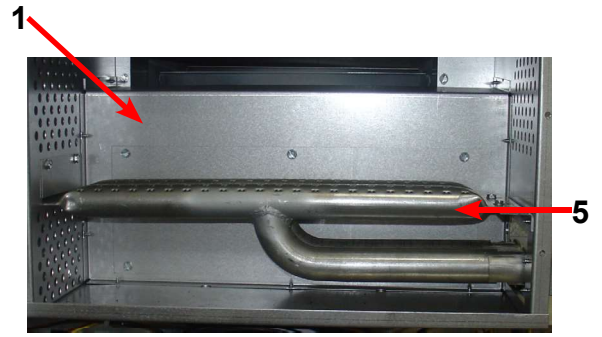
Dryer Burner Housing Group Before Serial #232998

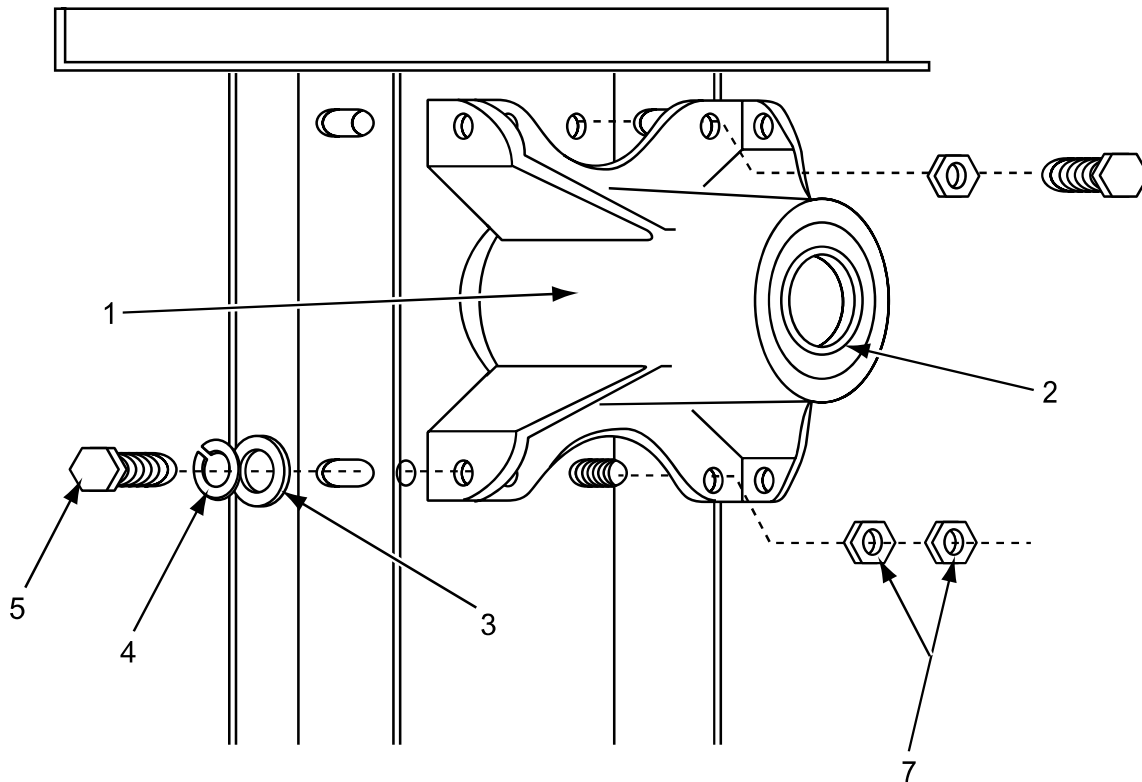
Key	Description	Part Number	Qty
*	Housing Assembly, Burner	9803-199-001	1
1	Panel-Burner Housing Front & Back	9454-831-001	1
*	Panel-Burner Housing, Side Left	9454-789-001	1
2	Panel-Burner Housing, Side Right	9454-790-001	1
*	Baffle-Burner Housing	9049-080-001	1
*	Connector Assembly- Burner	9828-015-001	1
3	Panel-Burner Housing, Top	9454-791-001	1
4	Cover Burner Housing, Top	9074-307-001	1
*	Screw, 10Bx1/4	9545-008-001	4
*	Screw, 10ABx3/8	9545-008-006	23
*	Plate, Recirculation Cover	9452-729-001	1
*	Screw, 10Bx1/4	9545-008-001	6
*	Shield, Burner Inlet	9550-173-001	1
*	Screw, 10ABx3/8	9545-008-024	3
5	Burner, Main	9048-020-001	2
*	Panel- Burner Housing, Back	9454-816-001	1
*	Screw, 10Bx1/4	9545-008-001	4
6	Electrode-Ignition	9875-002-003	1
*	Screw, 8Bx1/4	9545-045-001	2
7	Thermostat-HI-Limit	9576-203-002	1
*	Bracket-Hi-Limit	9029-192-001	1
*	Spacer-Hi-Limit	9538-142-001	2
*	Screw, 8Bx3/4	9545-045-007	2
*	Wire Assy-BRN, 31"	8220-001-415	1
*	Wire Assy-RED, 31"	8220-095-025	1
*	Thermostat-Over Temp, Manual Reset	9576-207-008	1
*	Screw, 10ABx3/8	9545-008-006	2
*	Bushing, Anti-short,conduit	2114-008-000	2
8	Cover Assembly, OverTemp Thermostat	9825-057-002	1
*	Screw, 10ABx3/8	9545-008-006	2
9	Control Assy,Gas Valve	9857-134-001	1
10	Manifold Assy	9381-009-001	1
*	Orfice-Natural, #32	9425-069-009	2
*	Orfice-LP, #50	9425-069-008	2
11	Bracket-Manifold, Gas	9029-047-001	1
12	Bracket-Control	9039-915-001	1
12	Bracket-Support, Gas Valve	9029-116-001	1
*	Elbow- 1/2x90, Black Iron	8615-104-037	1
*	Nipple- 1/2x2, Black Iron	8655-073-040	3
*	Nipple- 15xClose, Back Iron	8655-073-041	1
*	Union- 1/2, Black Iron	8615-104-035	1
*	Valve-Gas Shutoff, (Optional)	9379-196-001	1
13	Duct Assy, Recirculation	9973-033-001	1



Dryer Burner Housing Group After Serial #232998

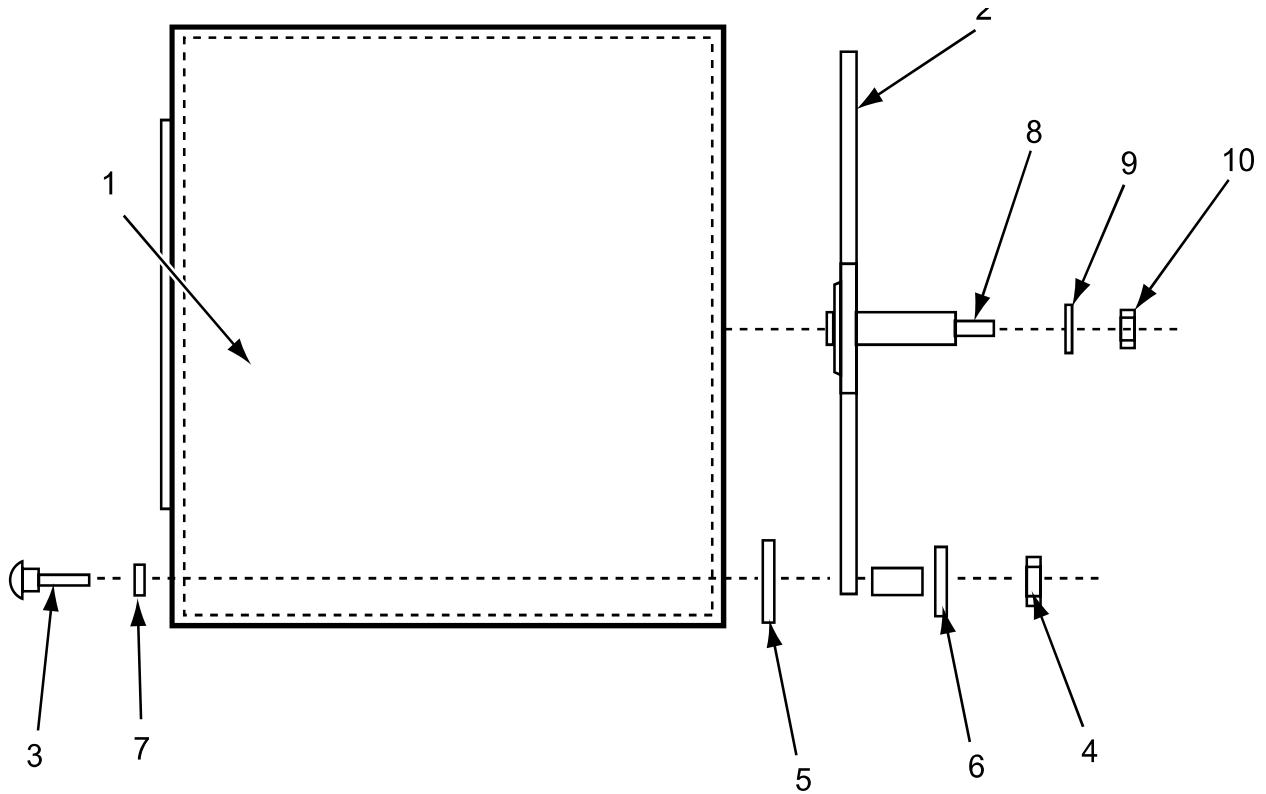
Key	Description	Part Number	Qty
*	Housing Assembly, Burner	9803-199-001	1
1	Panel-Burner Housing Front & Back	9454-831-001	1
*	Panel-Burner Housing, Side Left	9454-789-001	1
2	Panel-Burner Housing, Side Right	9454-790-001	1
*	Baffle-Burner Housing	9049-080-001	1
*	Connector Assembly- Burner	9828-015-001	1
3	Panel-Burner Housing, Top	9454-791-001	1
4	Cover Burner Housing, Top	9074-307-001	1
*	Screw, 10Bx1/4	9545-008-001	4
*	Screw, 10ABx3/8	9545-008-006	23
*	Plate, Recirculation Cover	9452-729-001	1
*	Screw, 10Bx1/4	9545-008-001	6
*	Shield, Burner Inlet	9550-173-001	1
*	Screw, 10ABx3/8	9545-008-024	3
5	Burner, Main	9048-020-001	2
*	Panel- Burner Housing, Back	9454-816-001	1
*	Screw, 10Bx1/4	9545-008-001	4
6	Electrode-Ignition	9875-002-003	1
*	Screw, 8Bx1/4	9545-045-001	2
7	Thermostat-HI-Limit	9576-203-002	1
*	Bracket-HI-Limit	9029-192-001	1
*	Spacer-HI-Limit	9538-142-001	2
*	Screw, 8Bx3/4	9545-045-007	2
*	Wire Assy-BRN, 31"	8220-001-415	1
*	Wire Assy-ORG, 31"	8220-095-018	1
*	Thermostat-Over Temp, Manual Reset	9576-207-008	1
*	Screw, 10ABx3/8	9545-008-006	2
*	Bushing, Over Temp	2114-008-000	2
8	Cover Assembly, OverTemp Thermostat	9825-057-002	1
*	Screw, 10ABx3/8	9545-008-006	2
9	Control Assy,Gas Valve	9857-134-001	1
10	Manifold Assy	9381-012-001	1
*	Orifice-Natural, #32	9425-069-009	2
*	Orifice-LP, #50	9425-069-008	2
11	Bracket-Manifold, Gas	9029-257-001	1
12	Bracket-Manifold, Gas	9029-258-001	1
*	Screws,	9545-008-006	4
13	Duct Assy, Recirculation	9973-033-001	1
13	Valve-Gas Shutoff, (Optional)	9379-196-001	1
14	Plug, Manifold		1





Bearing Housing Assembly

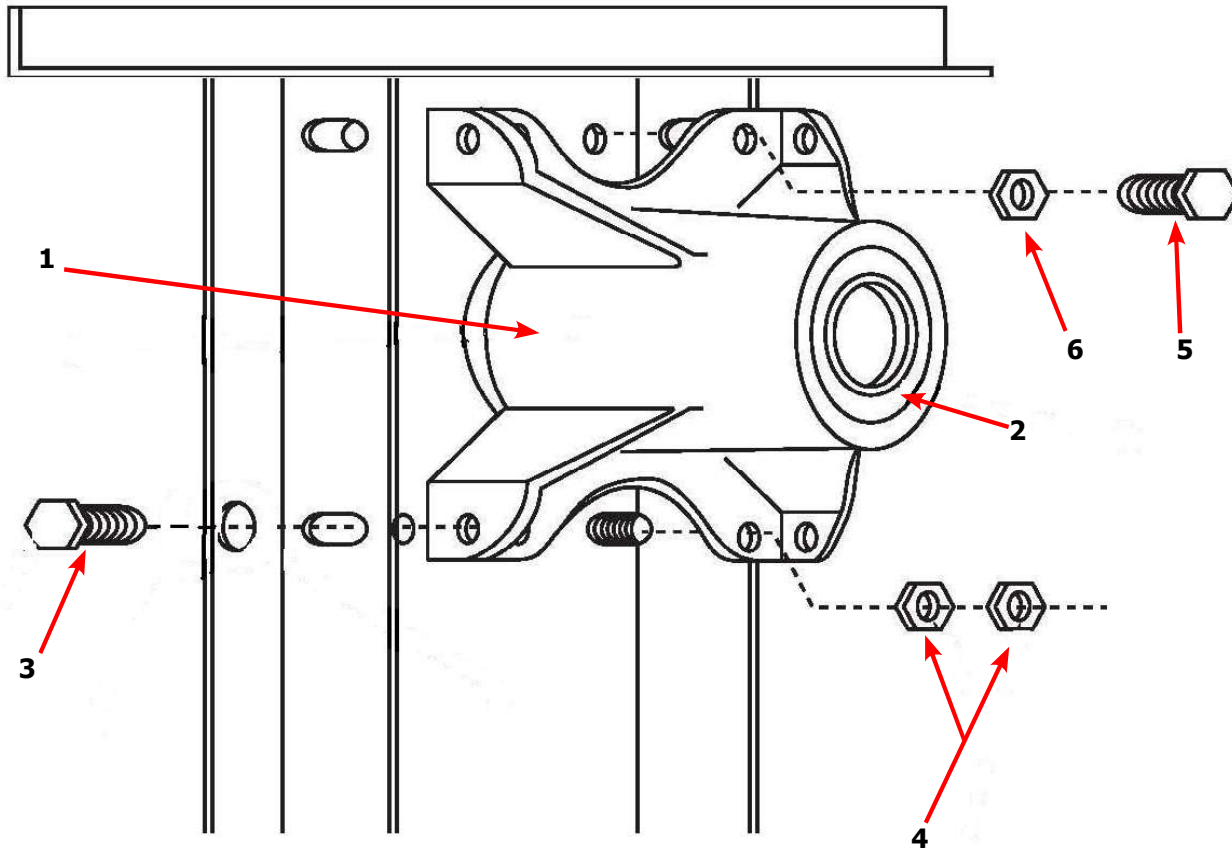
Key	Description	Part Number	Qty
1	Housing, Bearing	9241-161-002	1
2	Bearing, Ball (Front & Rear)	9036-130-001	2
3	Washer, Flat 3/8	8641-581-009	4
4	Lock Washer Spring, 3/8	8641-582-003	4
5	Screw, 3/8-24x3/4	9545-049-002	4
6	Nut, 3/8-24	8640-415-002	2
7	Screw, 3/8-24x1	9545-049-001	2
8	Nut, 5/16-24	8640-400-002	4
*	Spacer, Bearing	9538-139-002	1
*	Shim, Tumbler	9552-013-003	4
*	Bearing Housing Complete Assy (Includes bearings & Spacer)	9803-160-003	1



Spyder Trunion & Cylinder

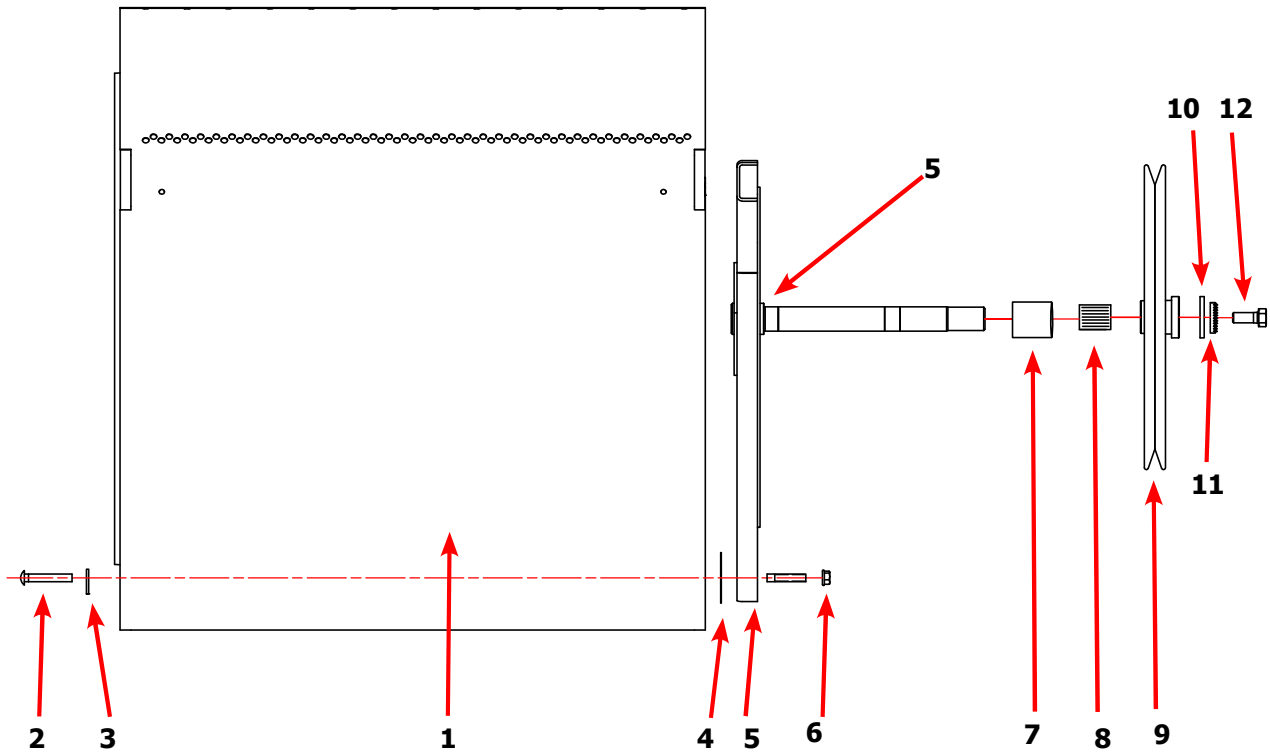
Key	Description	Part Number	Qty
*	Tumbler Assy Complete W/Spider (GALV)	9848-127-001	1
1	Tumbler Assy (Galvanized)	9848-146-001	1
1	Tumbler Assy Complete W/Spider (SS)	9848-127-002	1
1	Tumbler Assy (Stainless)	9848-146-002	1
2	Spider Assy	9568-011-001	1
3	Rod, Tumbler	9497-019-003	3
4	Nut, Wiz Lock	8640-415-004	3
6	Shim	9552-013-000	AR
7	Washer, Special	8641-554-001	3
8	Key- Woodruff	9306-006-000	1
9	LockWasher - IntTooth, 1"	8641-582-015	1
10	Washer -Flat	8641-581-035	1
11	Nut-Hex, 1" -14	8640-222-000	1

Dryer Rear View-Bearing Housing 30Lb



Key	Description	T-30	QTY
*	Bearing Housing Complete Assy (Includes bearings & Spacer)	9803-160-003	1
1	Housing, Bearing	9241-161-002	1
*	Bearing, Ball, Front	9036-130-001	1
*	Spacer, Bearing	9538-139-002	1
2	Bearing, Ball, Rear	9036-130-001	1
3	Screw-Wizlock, 3/8-24x3/4	9545-049-002	4
4	Nut, 5/16-18	8640-400-002	4
5	Screw, 3/8-24x1	9545-049-001	2
6	Nut, 3/8-24	8640-415-002	2
*	Shim, Tumbler	9538-139-002	AR

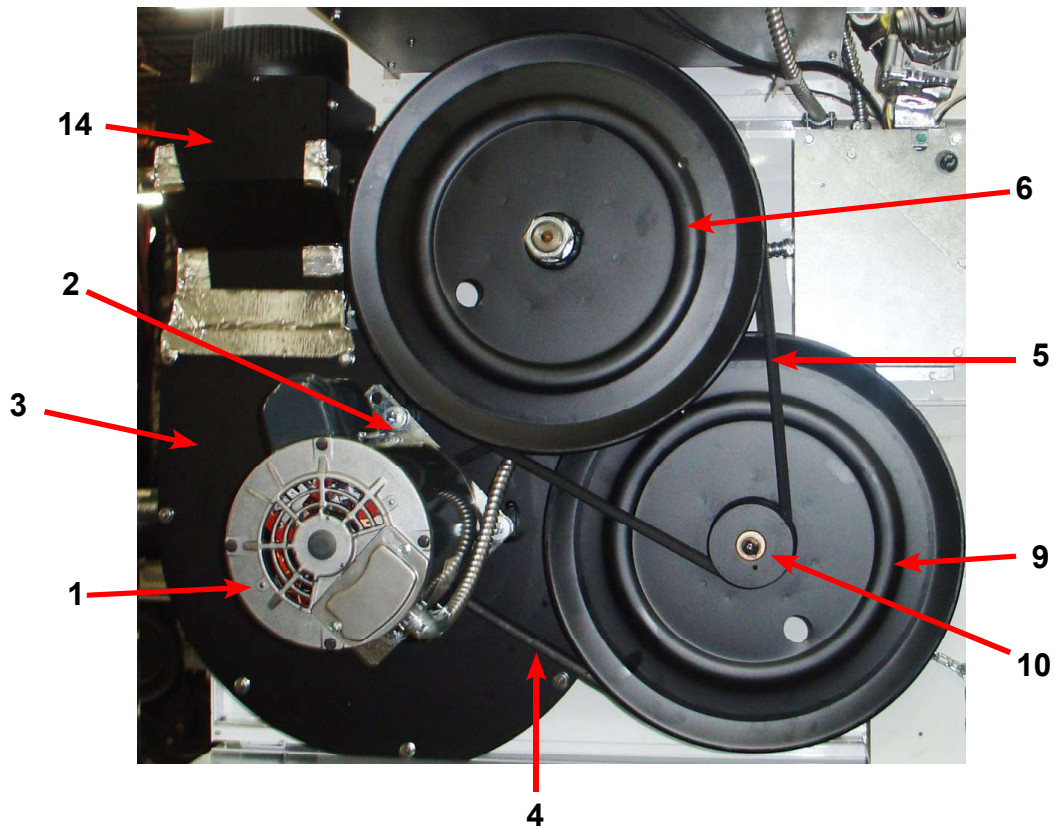
Dryer Tumbler Group 30Lb

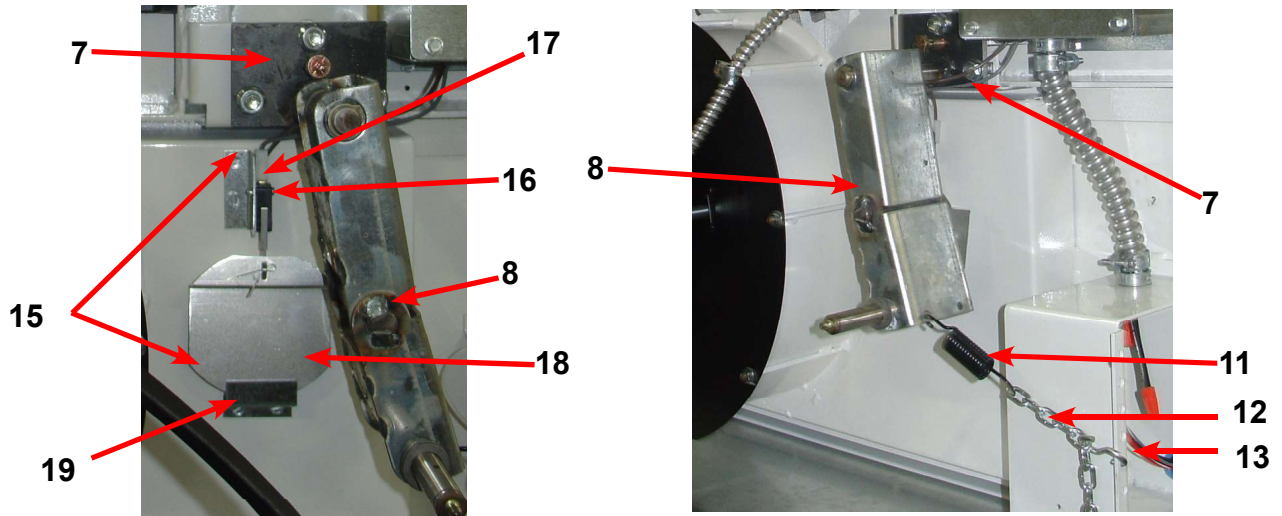


Key	Description	T-30	QTY
*	Tumbler Assy Complete W/Spider (GALV)	9848-142-001	1
1	Tumbler Assy (Galvanized)	9848-142-001	1
1	Tumbler Assy Complete W/Spider (SS & Galv front)	9848-147-002	1
1	Tumbler Assy (Stainless Galvanized front)	9848-147-002	1
2	Rod, Tumbler	9497-019-003	4
3	Washer, Special	8641-554-001	4
4	Shim	9552-013-003	AR
5	Spider Assy	9568-015-001	1
6	Nut, Wiz Lock	8640-415-004	3
7	Spacer-Shaft	9538-164-001	1
8	Tolerance Ring	9487-234-005	1
9	Pulley, Driven	9908-049-002	1
10	Washer -Flat	8641-581-026	1
11	LockWasher - IntTooth, 1"	8641-582-016	1
12	Screw, 1/2-13x1 1/4	9545-017-009	1

Dryer Rear View

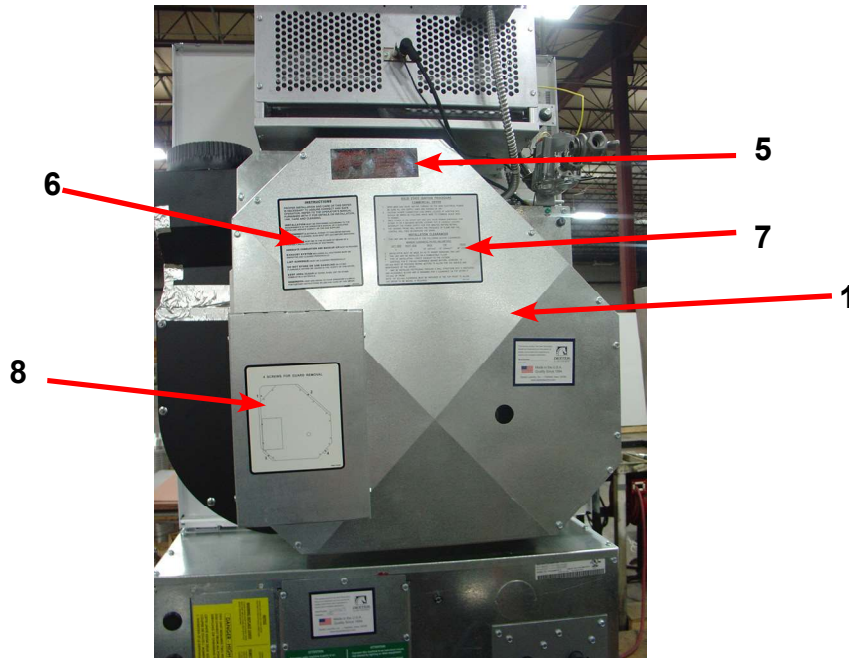
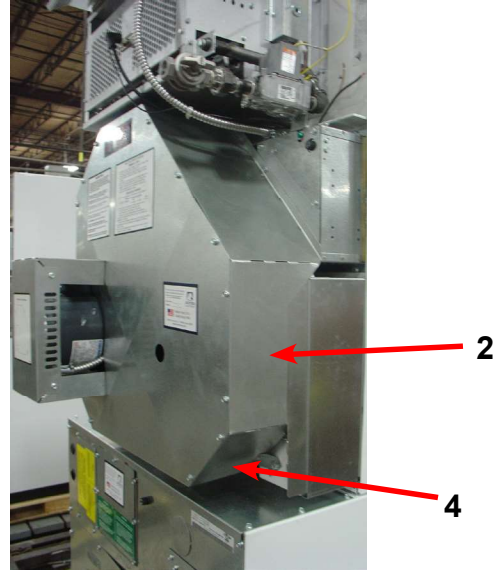
Key	Description	Part Number	Qty
1	Motor, Drive	9376-309-001	1
2	Plate, Motor Mounting	9452-766-001	1
*	Screw-Hex, 3/8-16x3/4	9545-029-008	4
*	Screw, Motor to Plate to Housing Back	9545-018-019	5
*	Lock Washer	8641-582-007	5
*	Spacer	9538-163-006	5
*	Flat Washer	8641-581-017	15
*	Rubber Grommet	9209-086-002	5
*	Grommet Spacers, Metal	9538-166-006	5
*	Pulley, Motor	9453-157-001	1
*	Screw, Set Motor Pulley	9545-028-013	2
3	Back Assy, Blower Housing	9962-015-002	1
*	Impeller, W/Set Screws	9278-039-001	2
4	Belt, Drive Motor	9040-073-009	1
5	Belt, Driven-Tumbler	9040-077-001	1
6	Pulley, Driven	9908-040-001	1
*	Key- Woodruff	9306-006-000	1



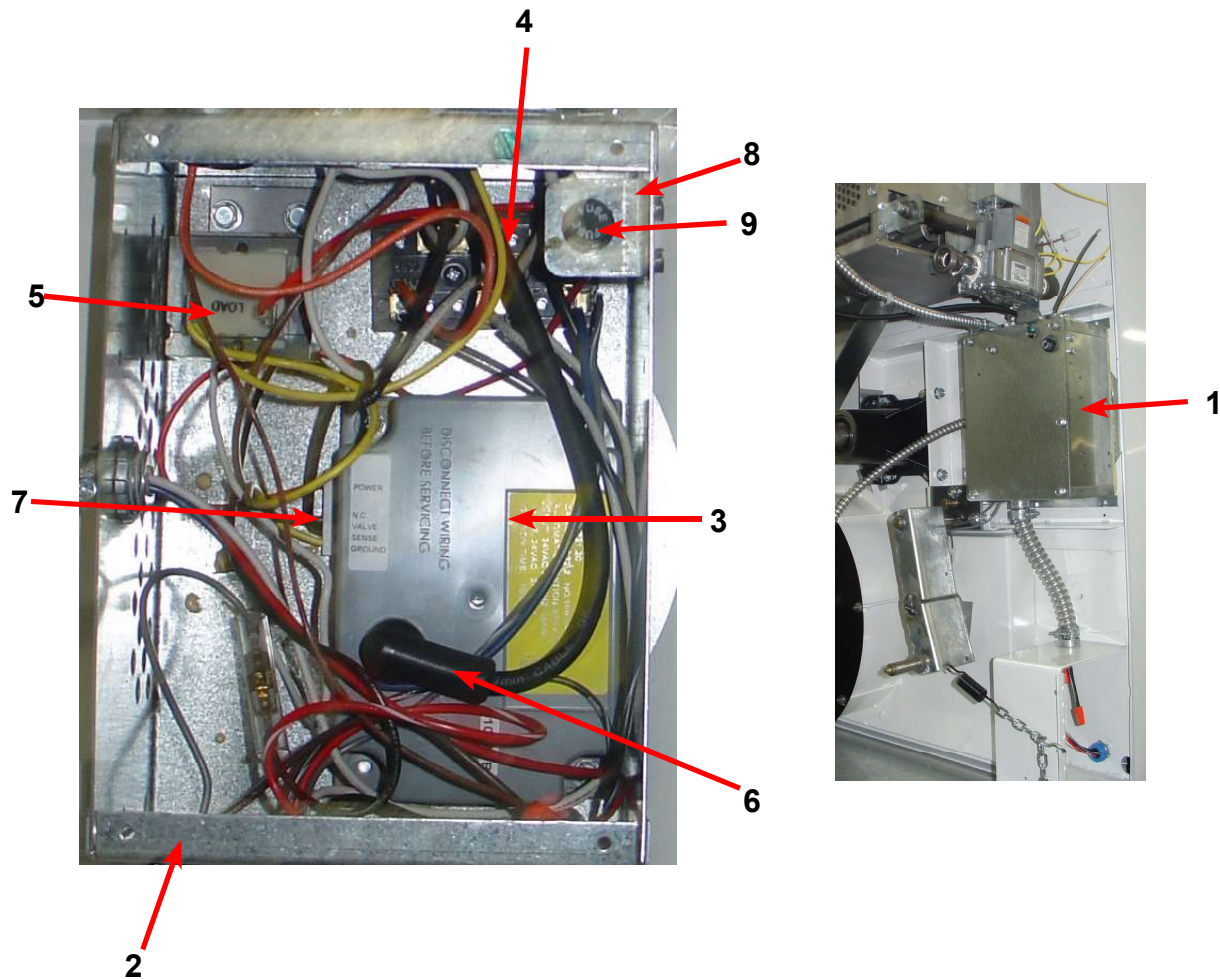


Key	Description	Part Number	Qty
7	Support Assy, Intermediate Pulley	9991-053-001	1
*	Bolt, Rd Hd 3/8-16x1 1/4	9545-029-010	3
*	Bolt 3/8-16x 1 1/2	9545-029-003	1
*	Nut	8640-415-004	3
*	Washer Flat	8641-581-035	4
8	Arm Assy-Tension, Complete	9861-022-001	1
*	Washer Flat	8641-581-035	3
*	Ring-Retaining	9487-200-003	1
9	Pulley Assy, Intermediate	9908-039-004	1
10	Bushing, Bronze	9036-145-002	2
*	Spacer, Shaft	9538-164-001	1
*	LockWasher - IntTooth, 1"	8641-582-015	1
*	Washer -Flat	8641-581-035	1
*	Nut-Hex, 1" -14	8640-222-000	1
11	Spring, Tension	9534-319-002	1
12	Chain, Tension	9099-012-002	1
13	Hook, Tension	9248-022-002	1
14	Housing-Assy, Damper	9803-184-002	1
*	Damper	9125-003-001	2
*	Pin, Hinge Damper	9451-146-004	2
*	Nut, Spring	8520-141-000	4
15	Switch Assembly, Air Flow	9801-060-001	1
16	Switch, Air Flow	9539-461-009	1
17	Bracket, Switch-Air Flow	9029-044-001	1
18	Acuator, Switch	9008-007-001	1
*	Pin, Cotter	9451-169-002	1
*	Screw	9545-020-001	1
*	Nut, Special Twin	8640-401-001	1
*	Shield, Switch	9550-169-003	1
19	Bracket, Actuator Stop	9029-046-001	1
*	Screw	9545-008-024	4

Dryer Back Panels and Guards

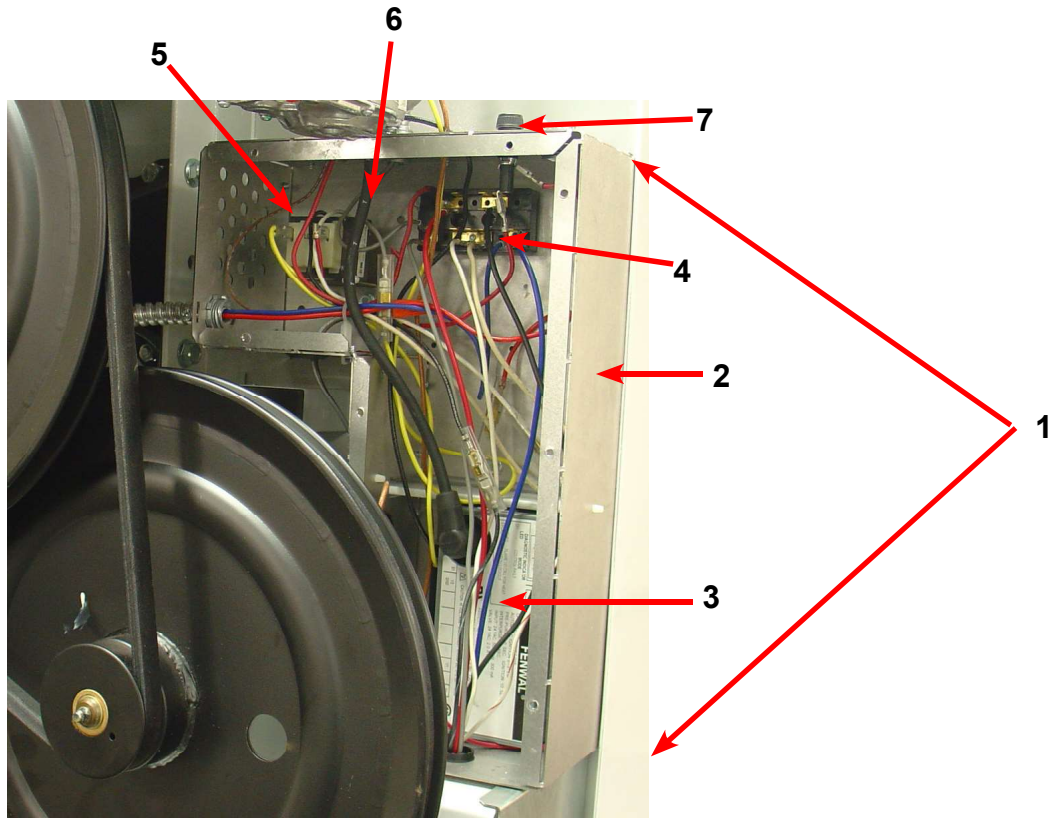


Key	Description	Part Number	Qty
1	Guard, Drive	9208-064-001	1
2	Pannel, Drive Guard, LH Before Serial #232998	9454-649-001	1
	Pannel, Drive Guard, LH After Serial #232998		
3	Pannel, Drive Guard, RH	9989-481-001	1
4	Panel, Drive Guard Bottom	9454-739-001	1
*	Screw, Guards	9545-008-024	8
5	Warning, Lable	8502-600-001	1
6	Lable, Instructions	8502-645-001	1
7	Lighting and Clearence, Lable	8527-112-001	1
8	Lable, Guard Removal	8502-710-001	1



Electrical Box / Ignition Control Before Serial # 232998

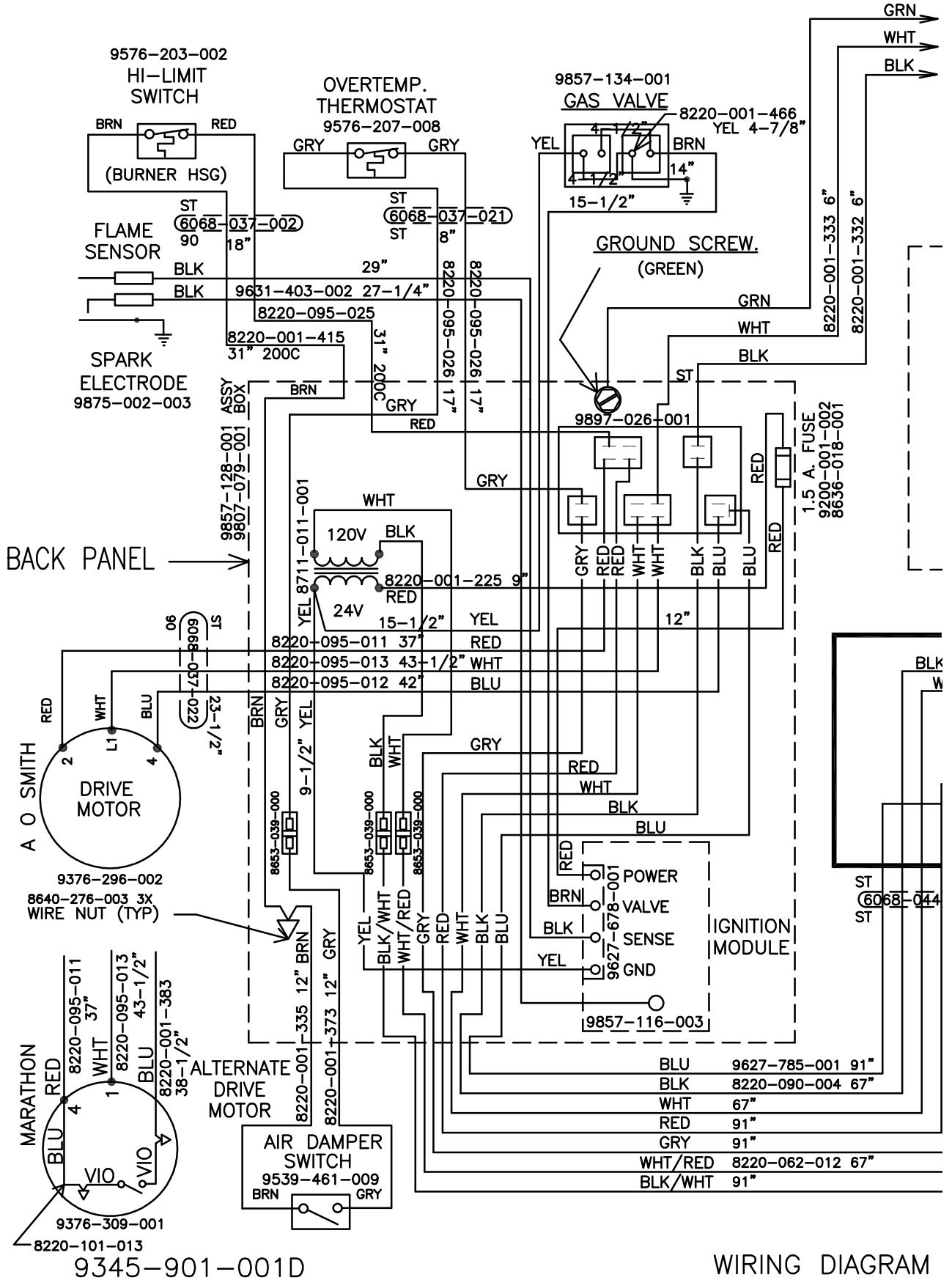
Key	Description	Part Number	Qty
1	Electical Box Assy, Complete (2-9 included)	9857-128-001	1
2	Box Assy. (Box Only)	9807-079-001	1
3	Control, Ignition (Grey Box)	9857-116-003	1
4	Terminal Block-Power	9897-026-001	1
5	Transformer 120/24VAC	8711-011-001	1
6	Wire Assy- Hi Voltage	9631-403-002	1
7	Harness- Low Voltage	9627-678-001	1
*	Wire Assy-Red, 9"	8220-001-225	1
8	Bracket Fuse Holder	9029-048-001	1
9	Fuse Holder	9200-001-002	1
*	Fuse, 1.5 Amp	8636-018-001	1
*	Insulation, Electrical Box (back)	9277-041-013	1



Electrical Box / Ignition Control After S/N 232998

Key	Description	Part Number	Qty
1	Electrical Box Assy, Complete (2-9 included)	9857-128-021	1
2	Box Assy, (Box Only)	9807-100-001	1
3	Control, Ignition (Grey Box)	9857-182-001	1
4	Terminal Block-Power	9897-026-003	1
5	Transformer 120/24VAC	8711-011-001	1
*	Wire Assy-Red, 9"	8220-001-225	1
6	Wire Assy- Hi Voltage	9631-403-009	1
7	Fuse Holder	9200-001-002	1
*	Fuse, 1.5 Amp	8636-018-001	1
*	Insulation, Electrical Box (back)	9277-041-013	1

Electrical Box / Ignition Control After S/N 232998

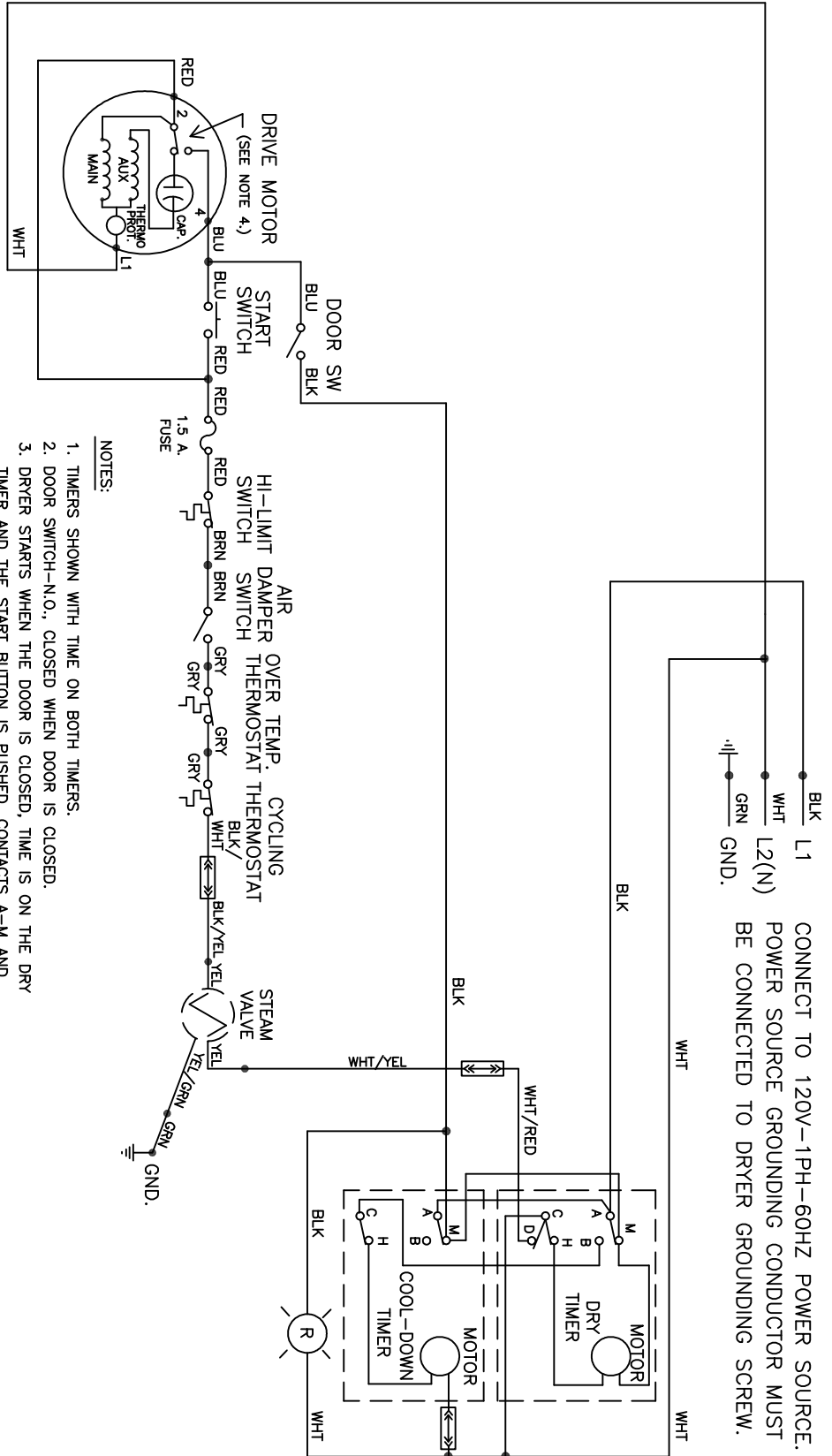


WIRING DIAGRAM

Section 6:

Steam and
Electric Heated
Dryer: Parts and
Wiring Diagrams

Wiring Schematic for 60hz Steam Dryer -10FS



- NOTES:
1. TIMERS SHOWN WITH TIME ON BOTH TIMERS.
 2. DOOR SWITCH-N.O., CLOSED WHEN DOOR IS CLOSED.
 3. DRYER STARTS WHEN THE DOOR IS CLOSED, TIME IS ON THE DRY TIMER AND THE START BUTTON IS PUSHED. CONTACTS A-M AND C-H OPEN AT THE END OF THE TIMER CYCLE. C-D OPENS 2.4 MINUTES BEFORE THE END OF THE CYCLE FOR AN AUTOMATIC COOL DOWN.
 4. CENTRIFUGAL SWITCH-CONTACT CHANGES POSITION WHEN MOTOR IS UP TO SPEED.
 5. REFER TO OWNER'S MANUAL FOR DESCRIPTION OF OPERATION AND REQUIREMENTS FOR HEATING CIRCUIT.

9345-997-002PR

SCHEMATIC

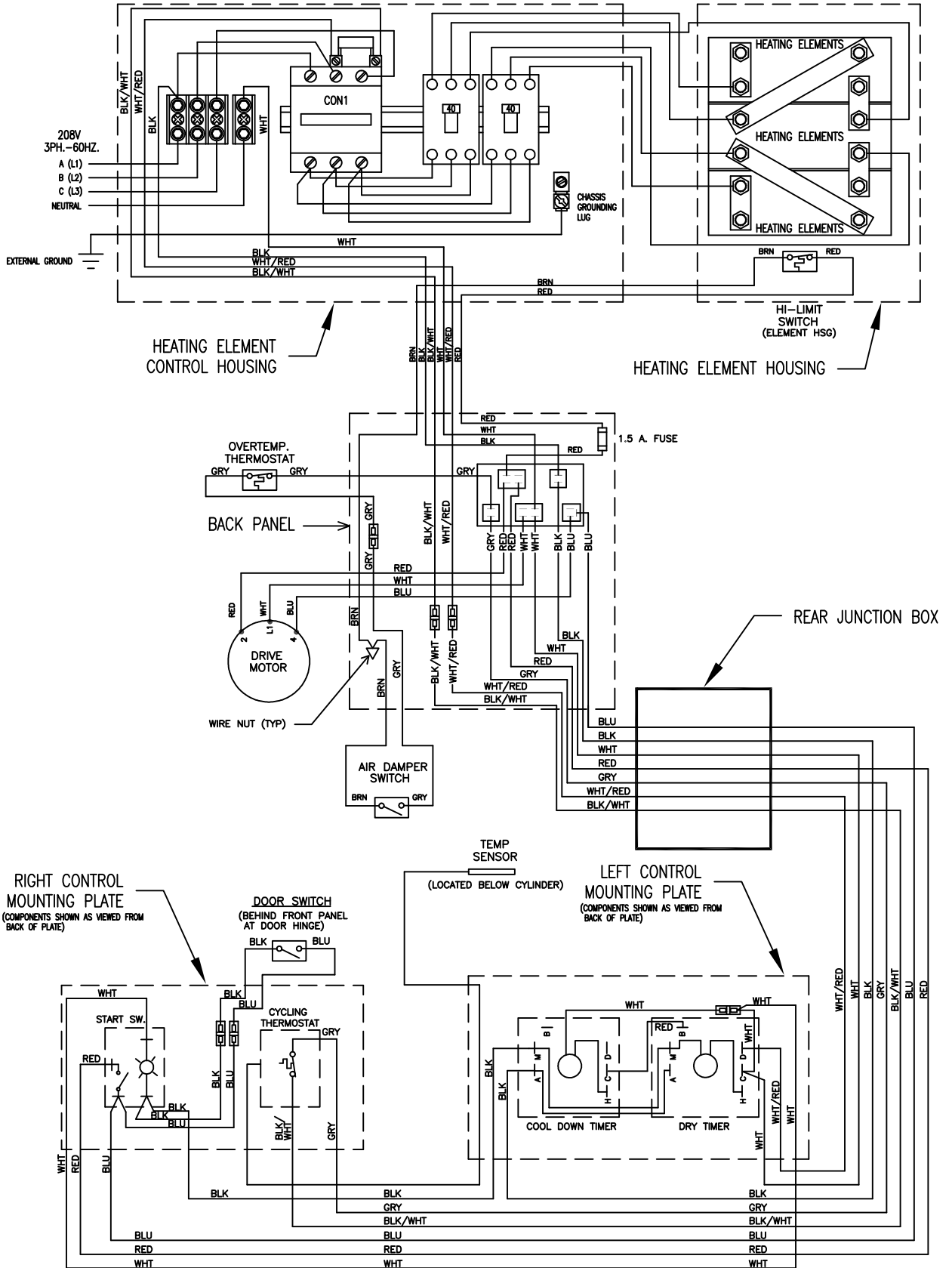
D_T_30HT_-10FS

Wiring Diagram for Electric Dryer -16FC

9345-990-002PR

WIRING DIAGRAM

D_T_30HT_-16FC

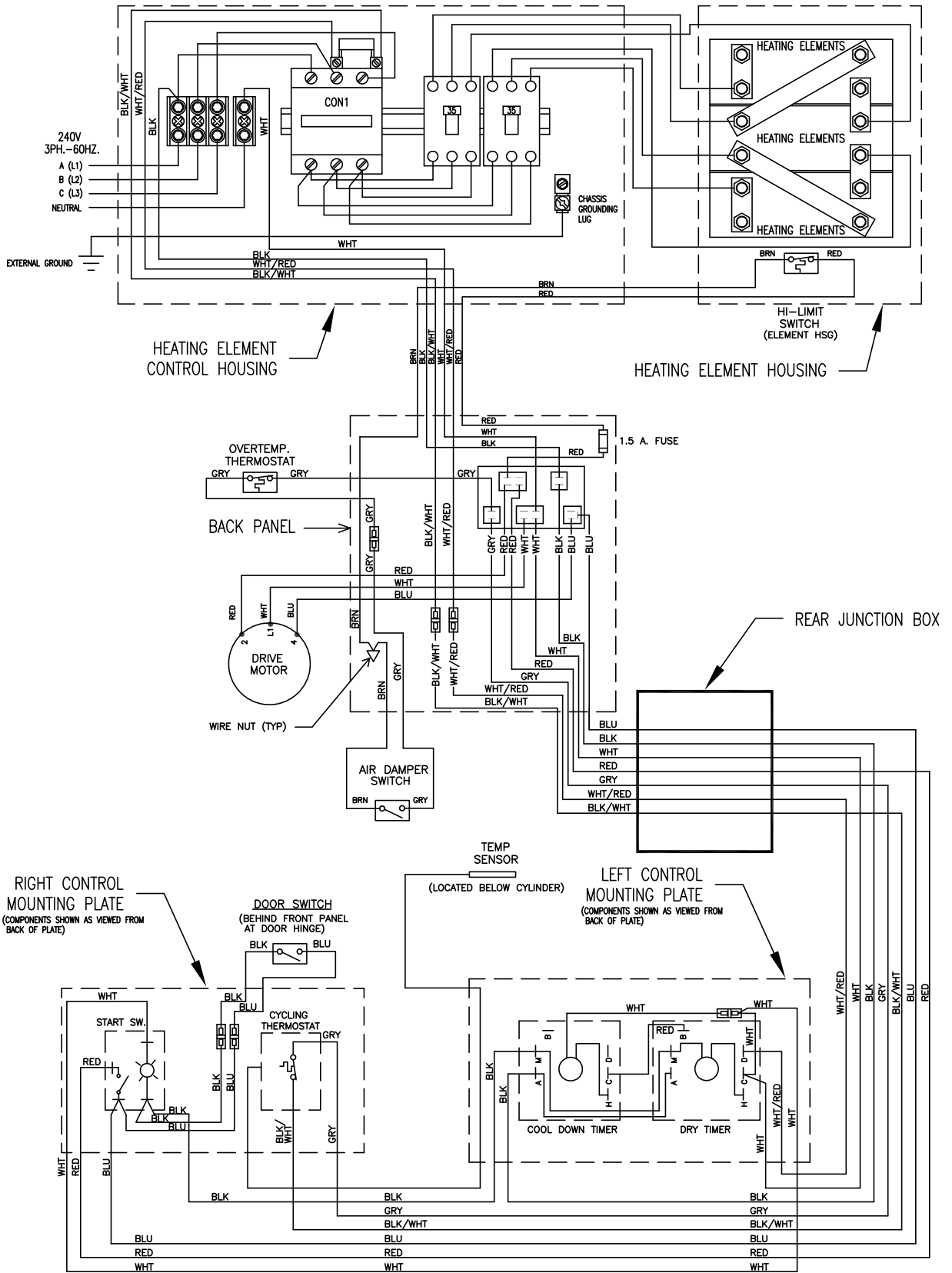


Wiring Diagram for Electric Dryer -18FD

9345-978-002A

WIRING DIAGRAM

D_I_T_30HT_18FD

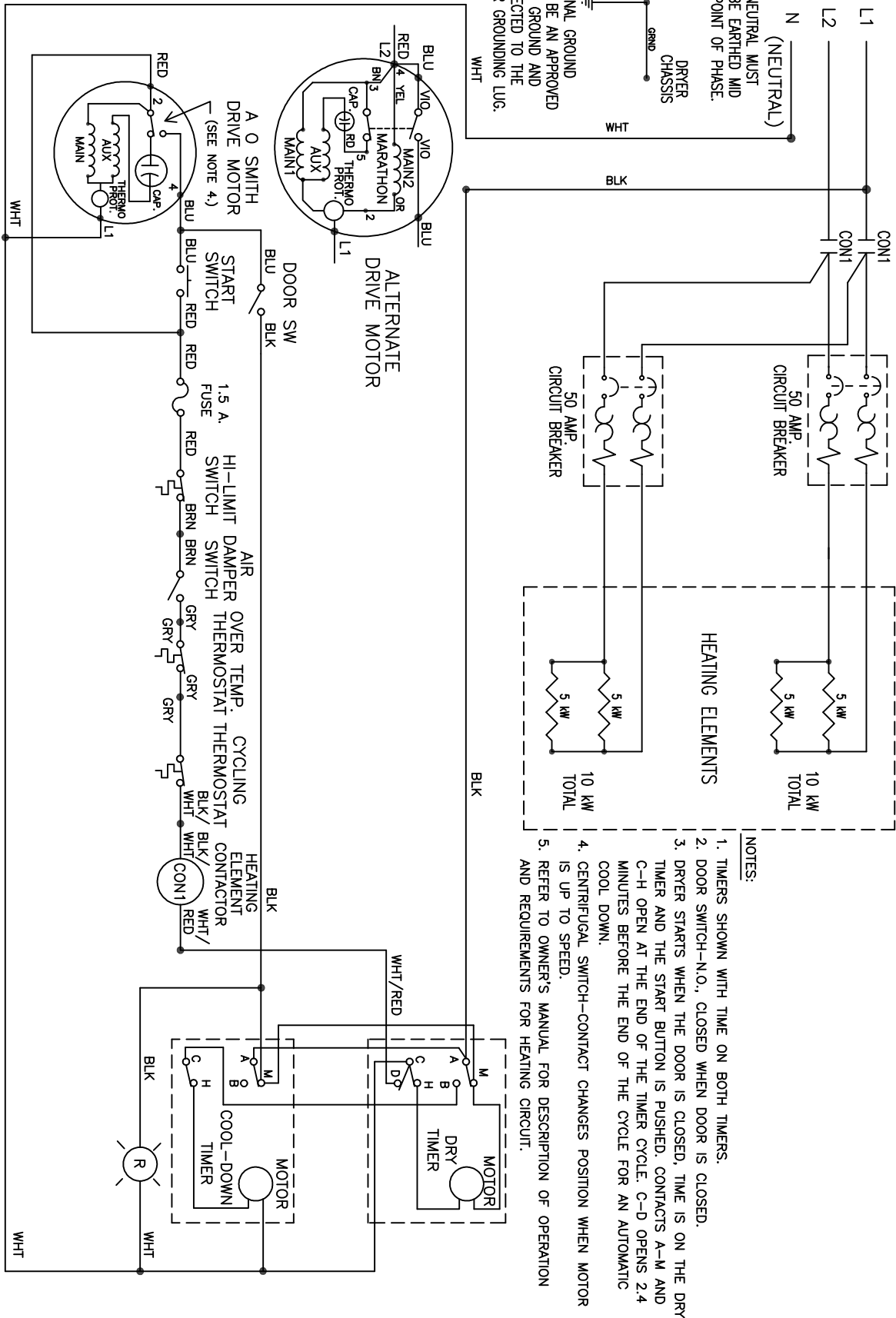


Wiring Schematic for Electric Dryer - 61FB

240V-60HZ.

EXTERNAL GROUND MUST BE AN APPROVED N.E.C. GROUND AND CONNECTED TO THE DRYER GROUNDING LUG.

NEUTRAL MUST BE EARTHED MID POINT OF PHASE.



9506-094-001A

SCHEMATIC

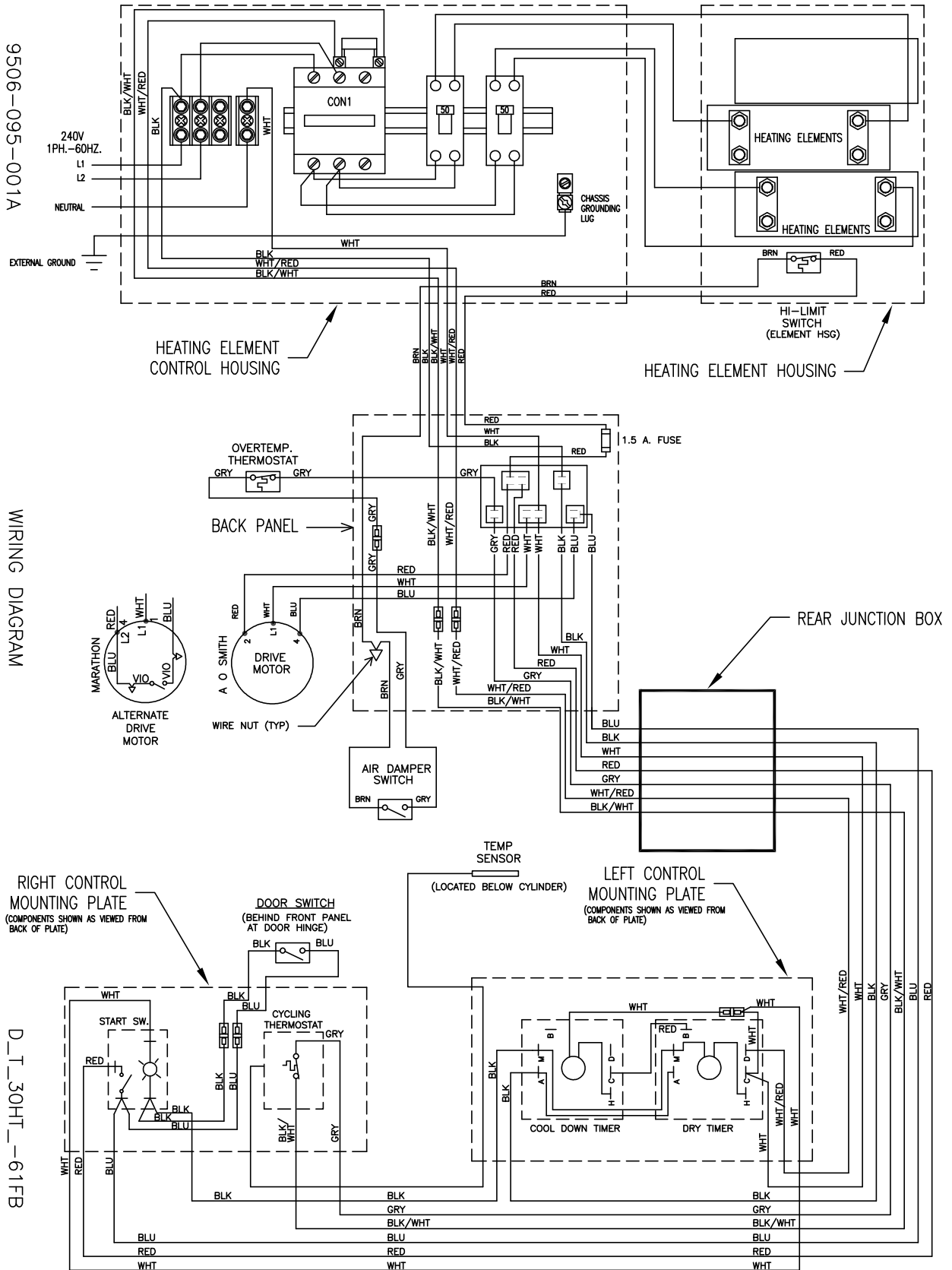
D_T_30HT_61FB

Wiring Diagram for Electric Dryer -61FB

9506-095-001A

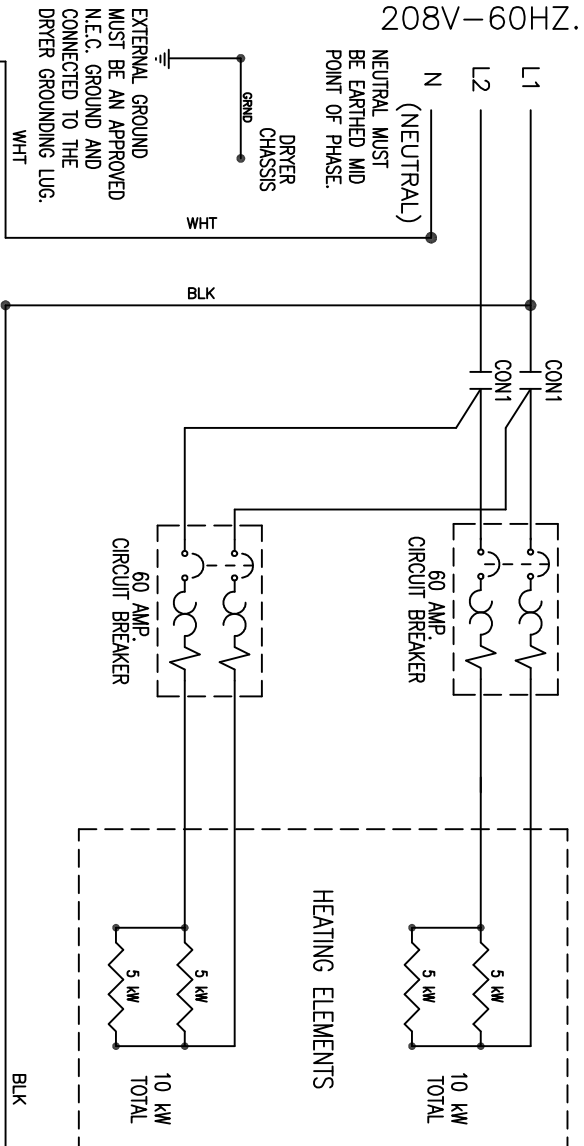
WIRING DIAGRAM

D_T_30HT_61FB

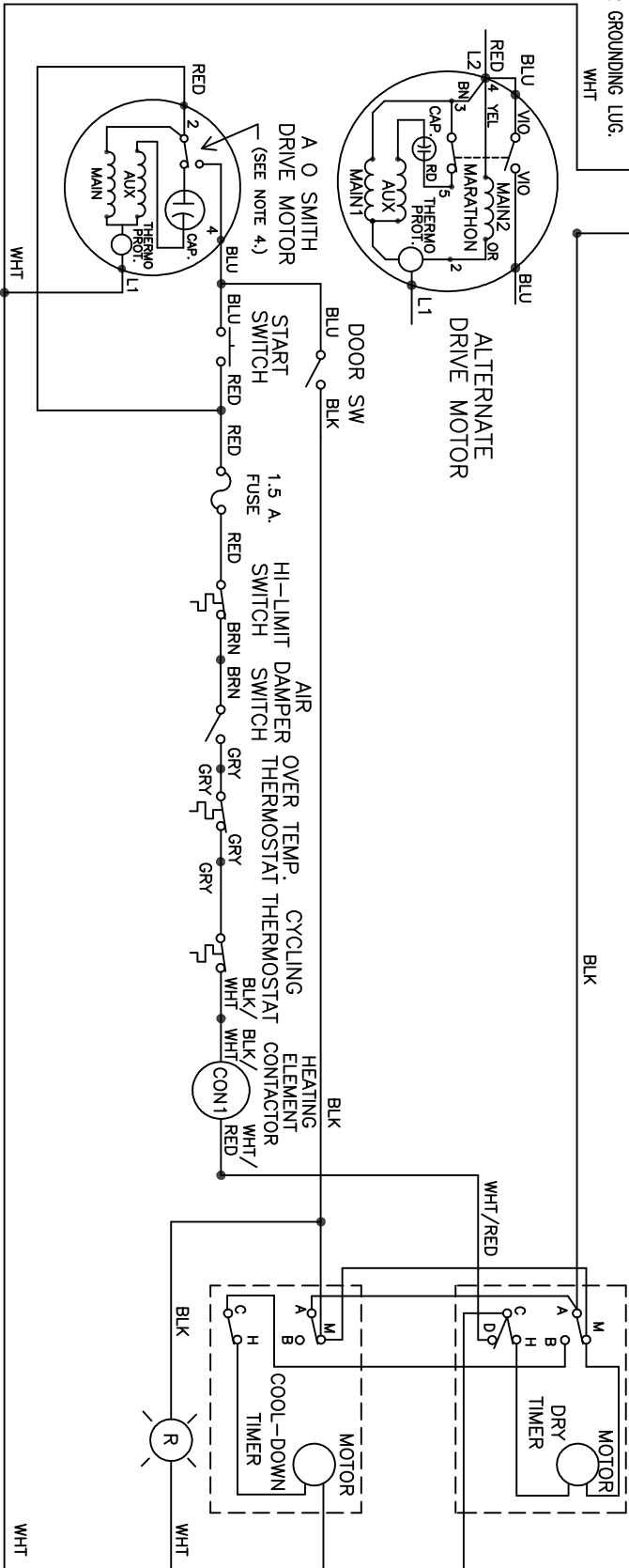


Wiring Schematic for Electric Dryer - 60FA

208V-60HZ.



- NOTES:
1. TIMERS SHOWN WITH TIME ON BOTH TIMERS.
 2. DOOR SWITCH-N.O., CLOSED WHEN DOOR IS CLOSED.
 3. DRYER STARTS WHEN THE DOOR IS CLOSED, TIME IS ON THE DRY TIMER AND THE START BUTTON IS PUSHED. CONTACTS A-M AND C-H OPEN AT THE END OF THE TIMER CYCLE. C-D OPENS 2.4 MINUTES BEFORE THE END OF THE CYCLE FOR AN AUTOMATIC COOL DOWN.
 4. CENTRIFUGAL SWITCH-CONTACT CHANGES POSITION WHEN MOTOR IS UP TO SPEED.
 5. REFER TO OWNER'S MANUAL FOR DESCRIPTION OF OPERATION AND REQUIREMENTS FOR HEATING CIRCUIT.



9506-312-001A

SCHEMATIC

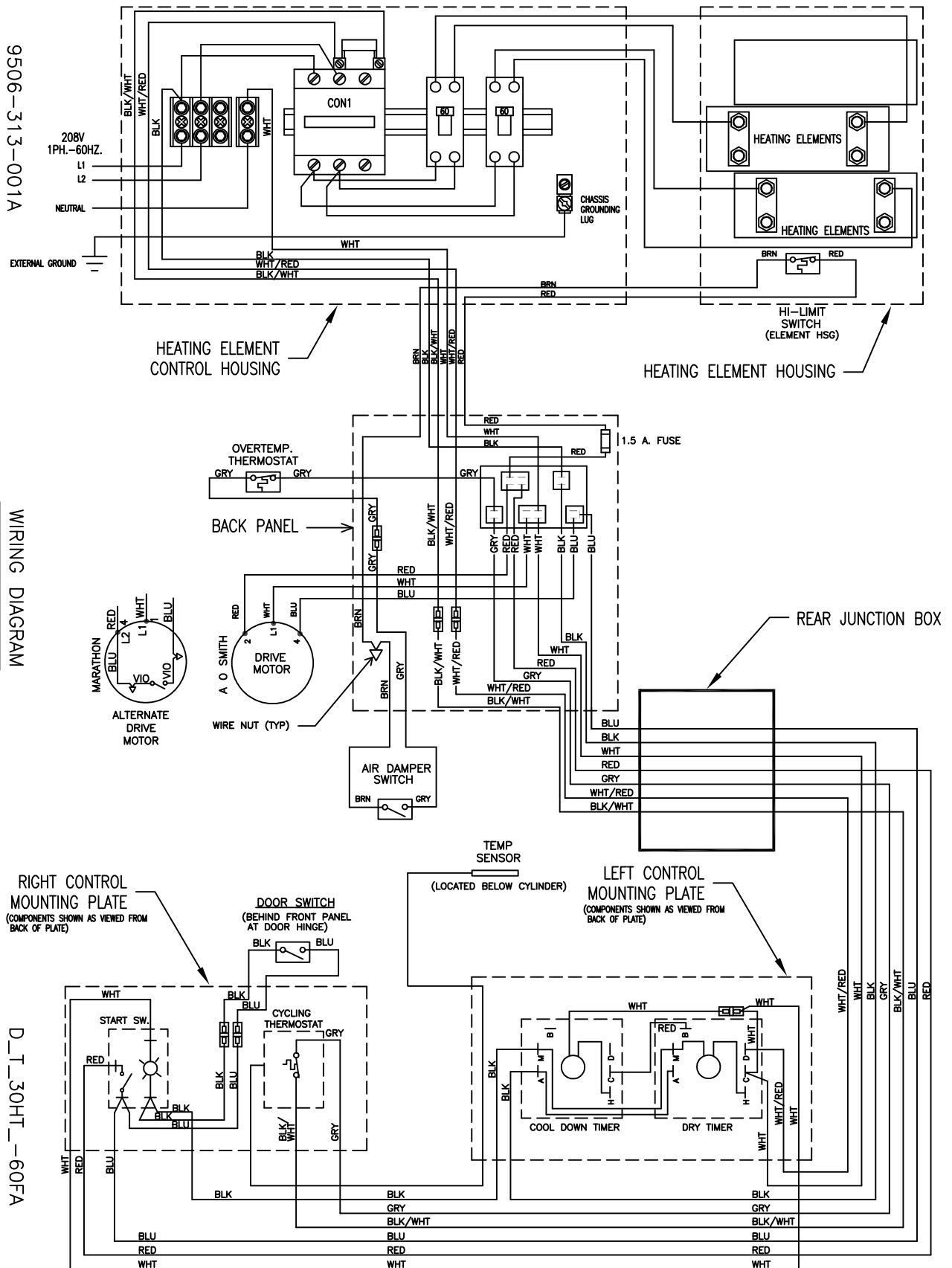
D_T_30HT_60FA

Wiring Diagram for Electric Dryer -60FA

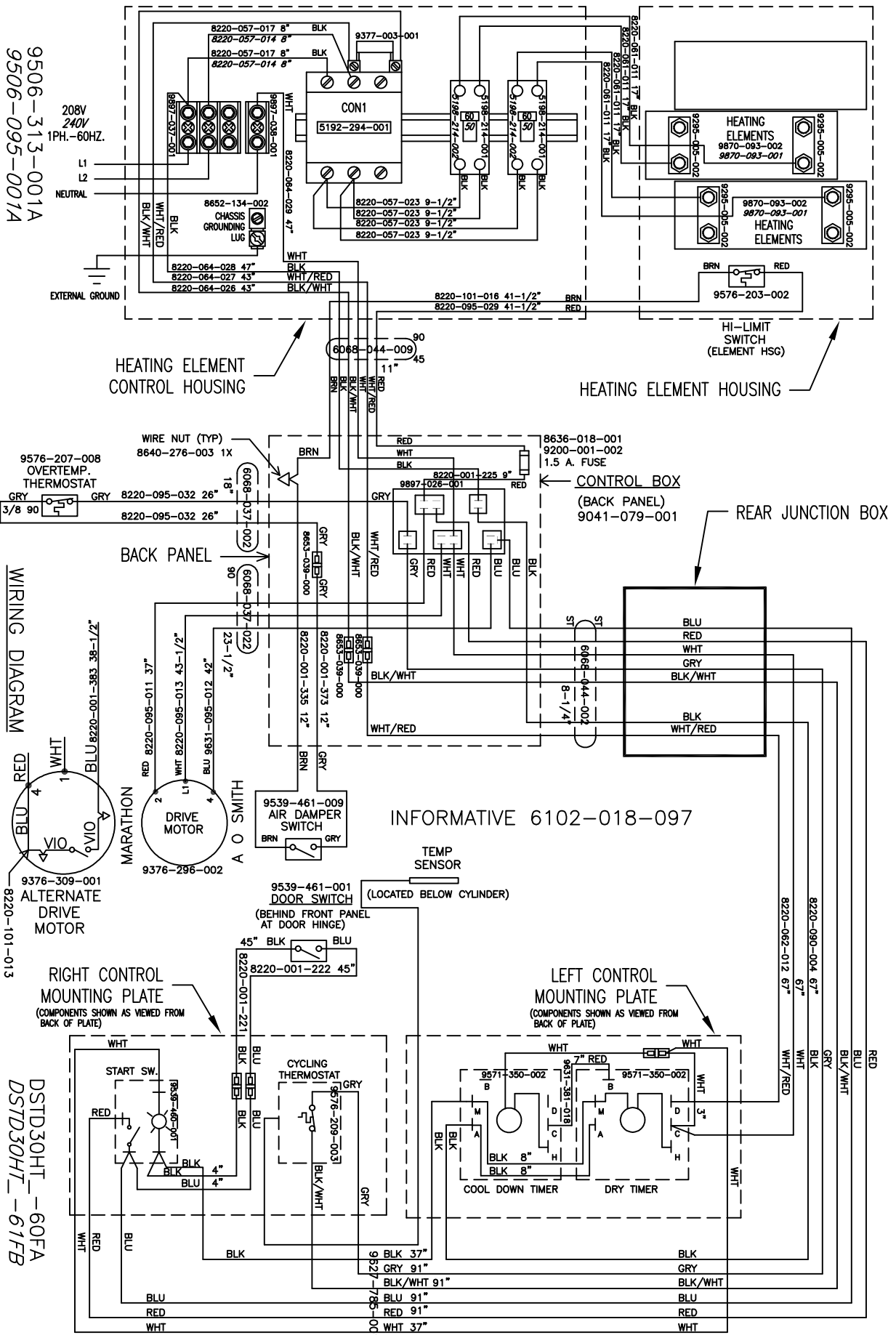
9506-313-001A

WIRING DIAGRAM

D_T_30HT_60FA



Wiring Informative -60FA, -61FB



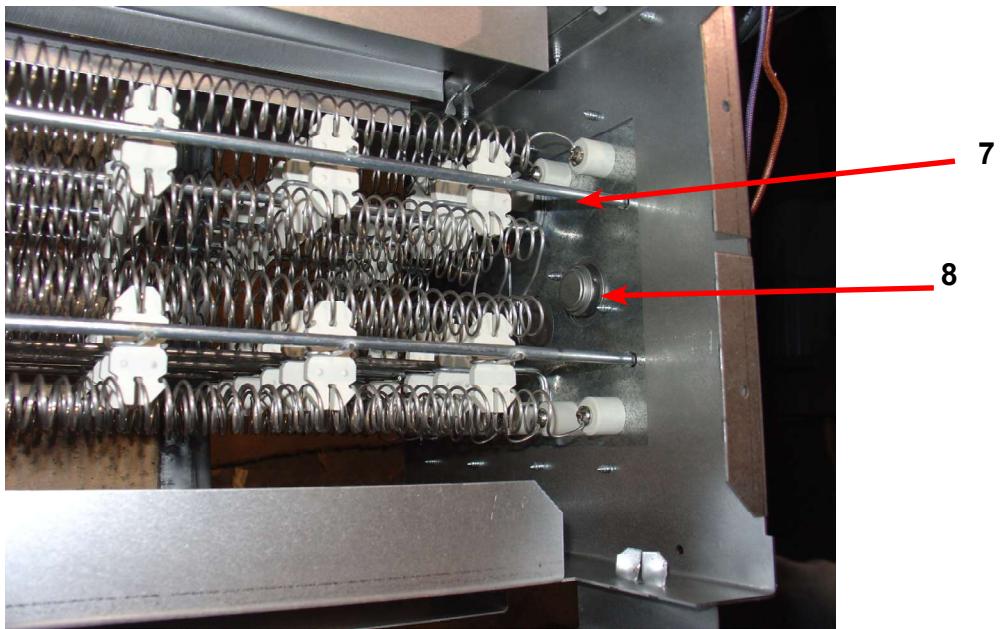
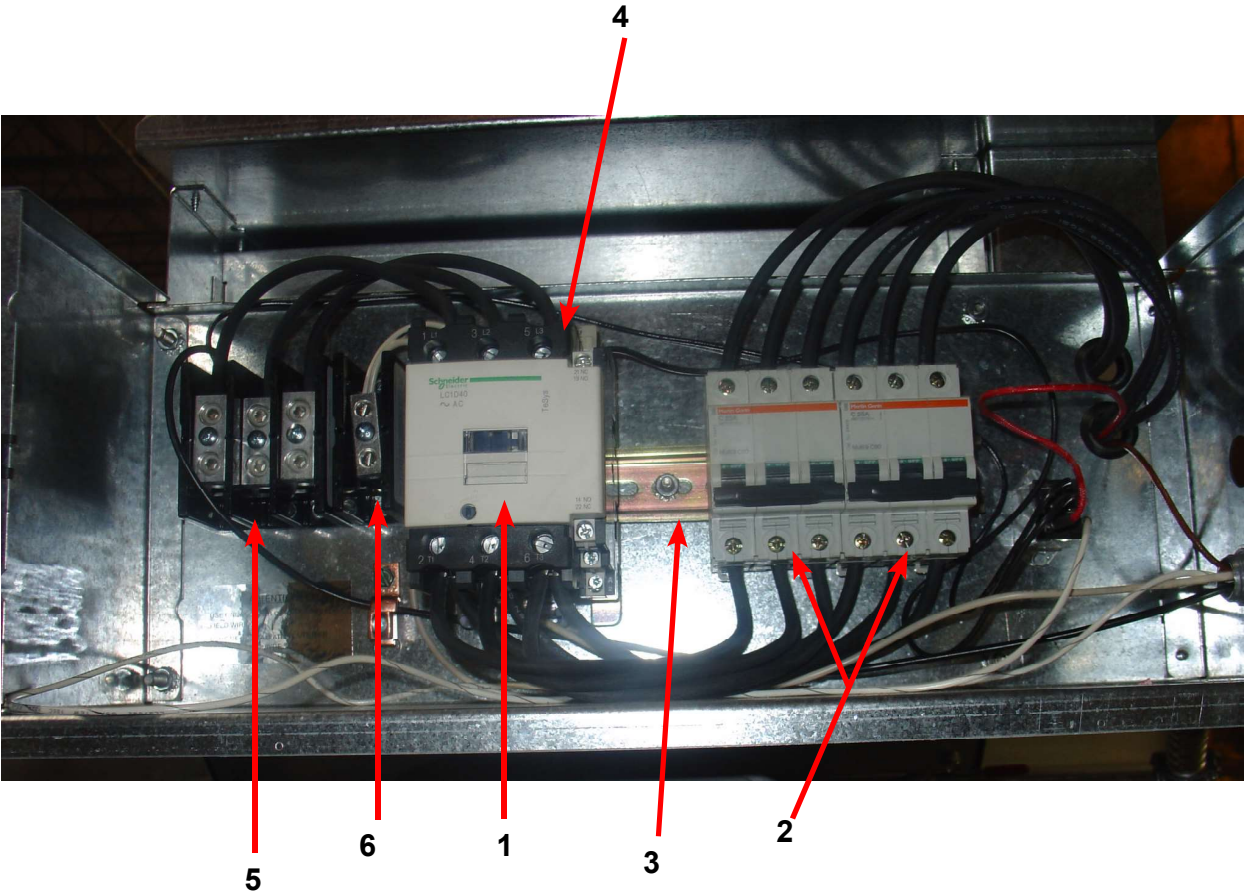
SWD Dryer Electric Heated DSTD30HT_-16FC

Key	Description	Part Number	Qty
1	Relay-Con 1	5192-296-001	1
2	Circuit Breaker 40 Amp	5198-213-002	2
3	RAIL-DIN,35X15MM	9488-011-002	1
4	VARISTOR-COILSUPPRESSOR	9377-003-001	
5	BLOCK-POWER,3POLE	9897-037-001	1
6	BLOCK-POWER,1POLE	9897-038-001	1
7	HEATER-ELECTRICELEMENT	9870-093-004	3
*	LABEL-WARNING,HIGHVOLTAGE	8502-614-005	1
*	LABEL-WARNING	8502-639-001	1
*	LABEL-WARN,FIREHAZARD(FRENCH)	8502-702-001	1
*	LABEL-EXHAUSTWARNING	8502-708-001	2
*	LABEL-WARNINGFOR208V	8502-711-001	1
*	BOOKLET-OWNERS,SWD	8514-046-002	1
*	WIRINGLABEL-SCHEMATIC	9345-989-001	1
*	WIRINGLABEL-DIAGRAM	9345-990-001	1
*	JUMPER-FORMED (see Drawing Page 74)	9295-004-002	2
*	JUMPER-STRAIGHT (see Drawing Page 74)	9295-005-002	4
8	High Limit Thermostat (see Drawing Page 74 for mounting)	9576-203-002	1

2

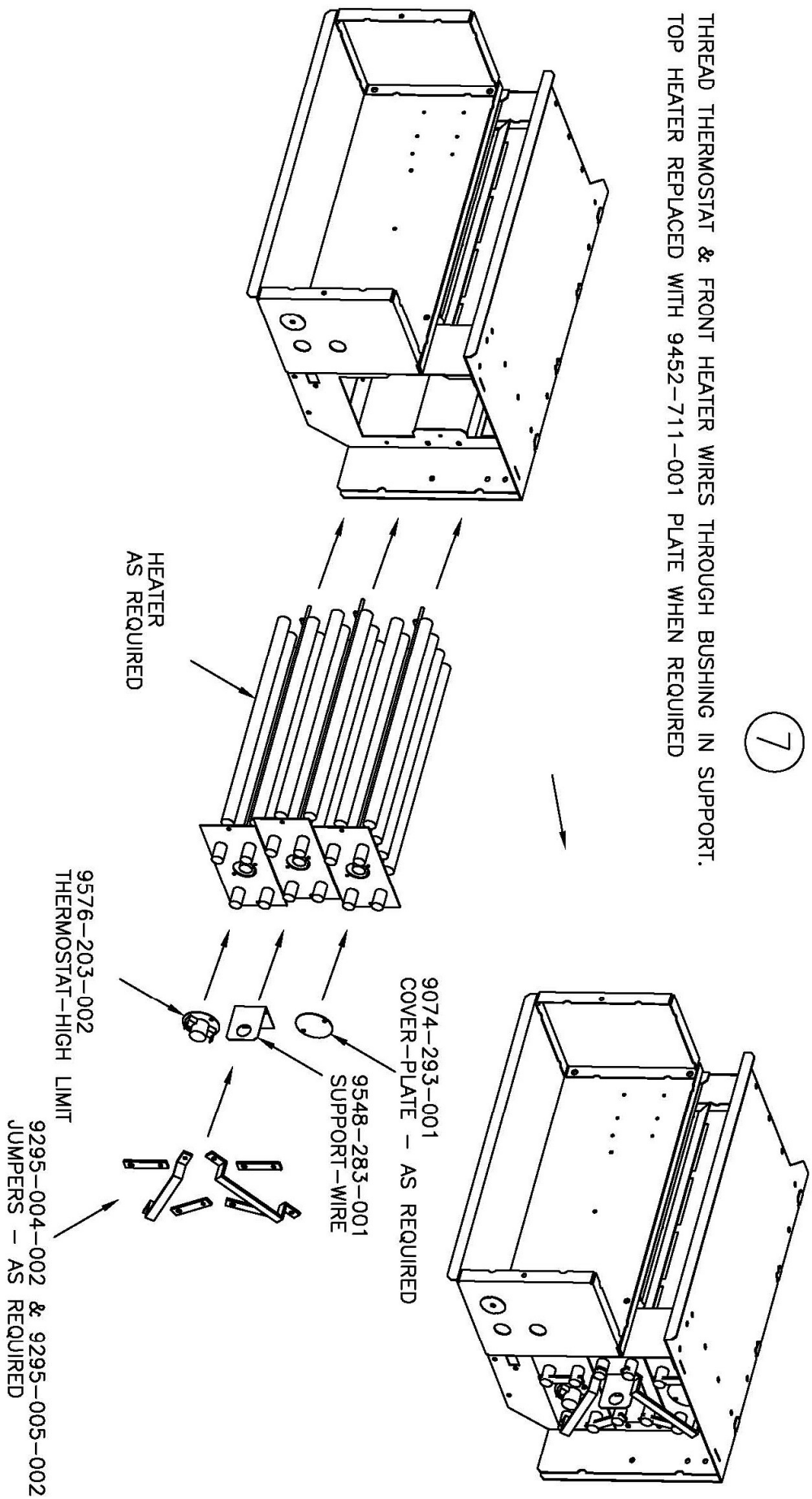
SWD Dryer Electric Heated DSTD30HT_-18FC

Key	Description	Part Number	Qty
1	Relay-Con 1	5192-296-001	1
2	Circuit Breaker 40 Amp	5198-213-001	2
3	RAIL-DIN,35X15MM	9488-011-002	1
4	VARISTOR-COILSUPPRESSOR	9377-003-001	1
5	BLOCK-POWER,3POLE	9897-037-001	1
6	BLOCK-POWER,1POLE	9897-038-001	1
7	HEATER-ELECTRICELEMENT	9870-093-003	3
*	LABEL-WARNING,HIGHVOLTAGE	8502-614-005	1
*	LABEL-WARNING	8502-639-001	1
*	LABEL-WARN,FIREHAZARD(FRENCH)	8502-702-001	1
*	LABEL-EXHAUSTWARNING	8502-708-001	2
*	LABEL-WARNINGFOR208V	8502-711-001	1
*	BOOKLET-OWNERS,SWD	8514-046-002	1
*	WIRINGLABEL-SCHEMATIC	9345-976-001	1
*	WIRINGLABEL-DIAGRAM	9345-977-001	1
*	JUMPER-FORMED (see Drawing Page 74)	9295-004-002	2
*	JUMPER-STRAIGHT (see Drawing Page 74)	9295-005-002	4
8	High Limit Thermostat (see Drawing Page 74 for mounting)	9576-203-002	1

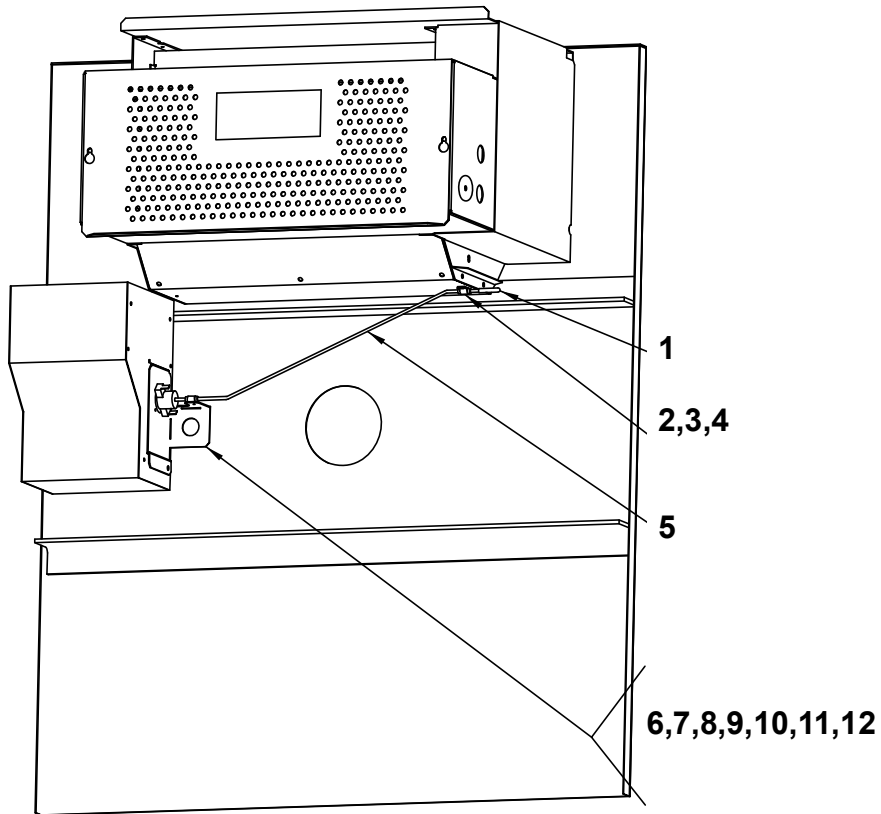


7

THREAD THERMOSTAT & FRONT HEATER WIRES THROUGH BUSHING IN SUPPORT.
TOP HEATER REPLACED WITH 9452-711-001 PLATE WHEN REQUIRED



9545-045-008 SCREW (AS REQUIRED)



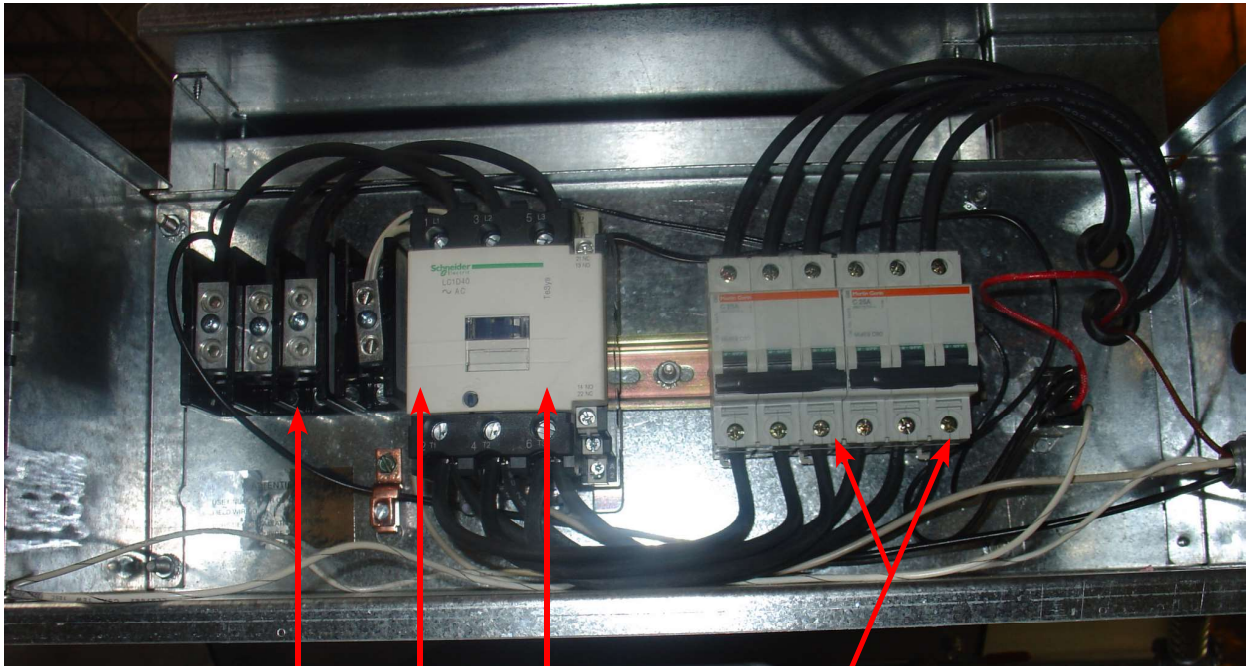
Key	Description	Part Number	Qty
1	Cap, Actuator-Red	0935-133-001	1
2	Spacer, Actuator	9538-157-003	1
3	Clamp, Actuator	9079-121-002	1
4	Screw, Clamp	9545-035-004	1
5	Actuator, Rod	9008-009-001	1
6	Bracket, Overtemp Thermostat	9029-136-001	1
7	Screw, Bracket	9545-008-024	2
8	Spacer, Thermostat	9538-157-003	2
9	Thermostat, Overtemp (resetable)	9576-207-008	1
10	Screw, Thermostat	9545-045-008	2
11	Clamp (Thermostat to Actuator)	9079-121-002	1
12	Screw (Clamp thermostat to Actuator)	9545-035-004	1

SWD Dryer Electric Heated DATD30HC_-61FB

Key	Description	Part Number	Qty
9	RELAY-125AMP(REISTIVE)CONTACT	5192-294-001	1
10	CIRCUITBREAKER-2POLE	5198-214-001	2
11	BLOCK-POWER,3POLE	9897-037-001	1
12	BLOCK-POWER,1POLE	9897-0378001	1
*	WIRINGLABEL-SCHEMATIC	9345-987-002	1
*	WIRINGLABEL-DIAGRAM	9345-988-002	1

SWD DRYER Electric Heated DSTD30HC_-60FA

Key	Description	Part Number	Qty
9	RELAY-125AMP(REISTIVE)CONTACT	5192-294-001	1
10	CIRCUITBREAKER-2POLE	5198-214-001	2
11	BLOCK-POWER,3POLE	9897-037-001	
12	BLOCK-POWER,1POLE	9897-038-001	
*	WIRINGLABEL-SCHEMATIC	9506-214-002	1
*	WIRINGLABEL-DIAGRAM	9506-215-002	1
*	HEATER-ELECTRICELEMENT	9870-093-002	2



11

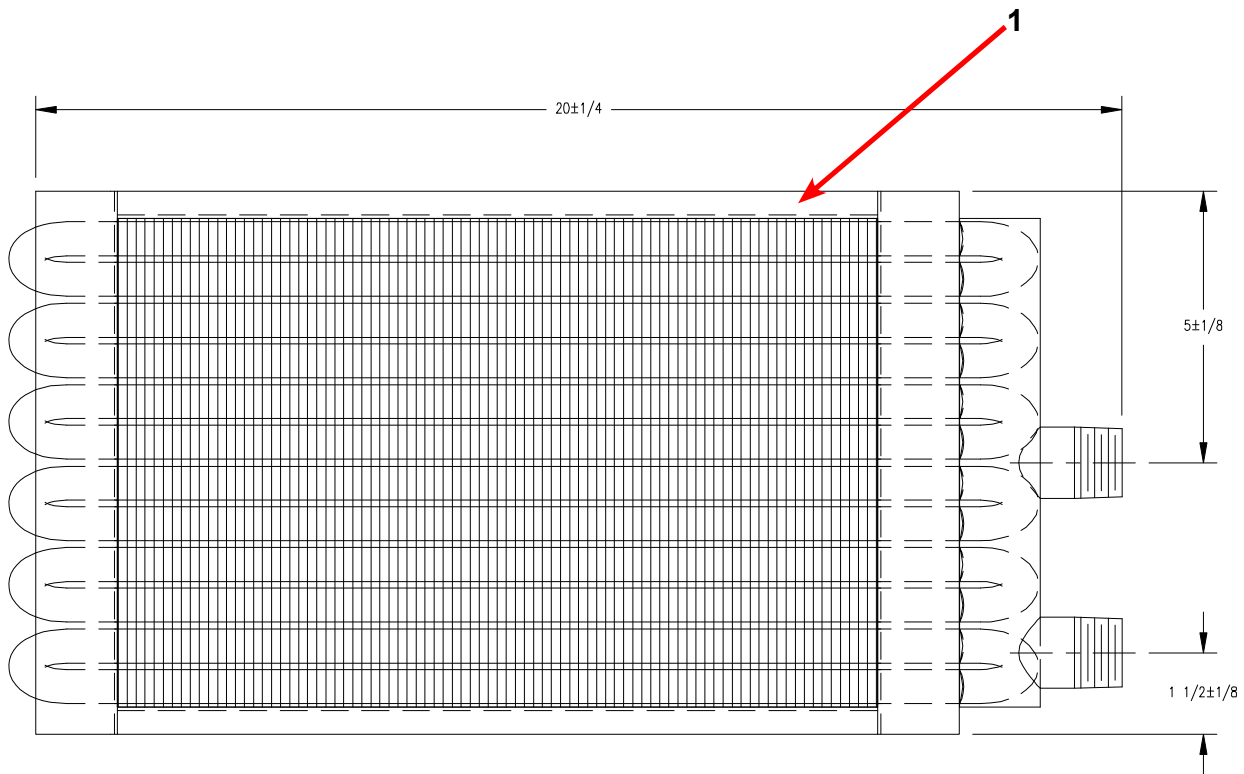
12

9

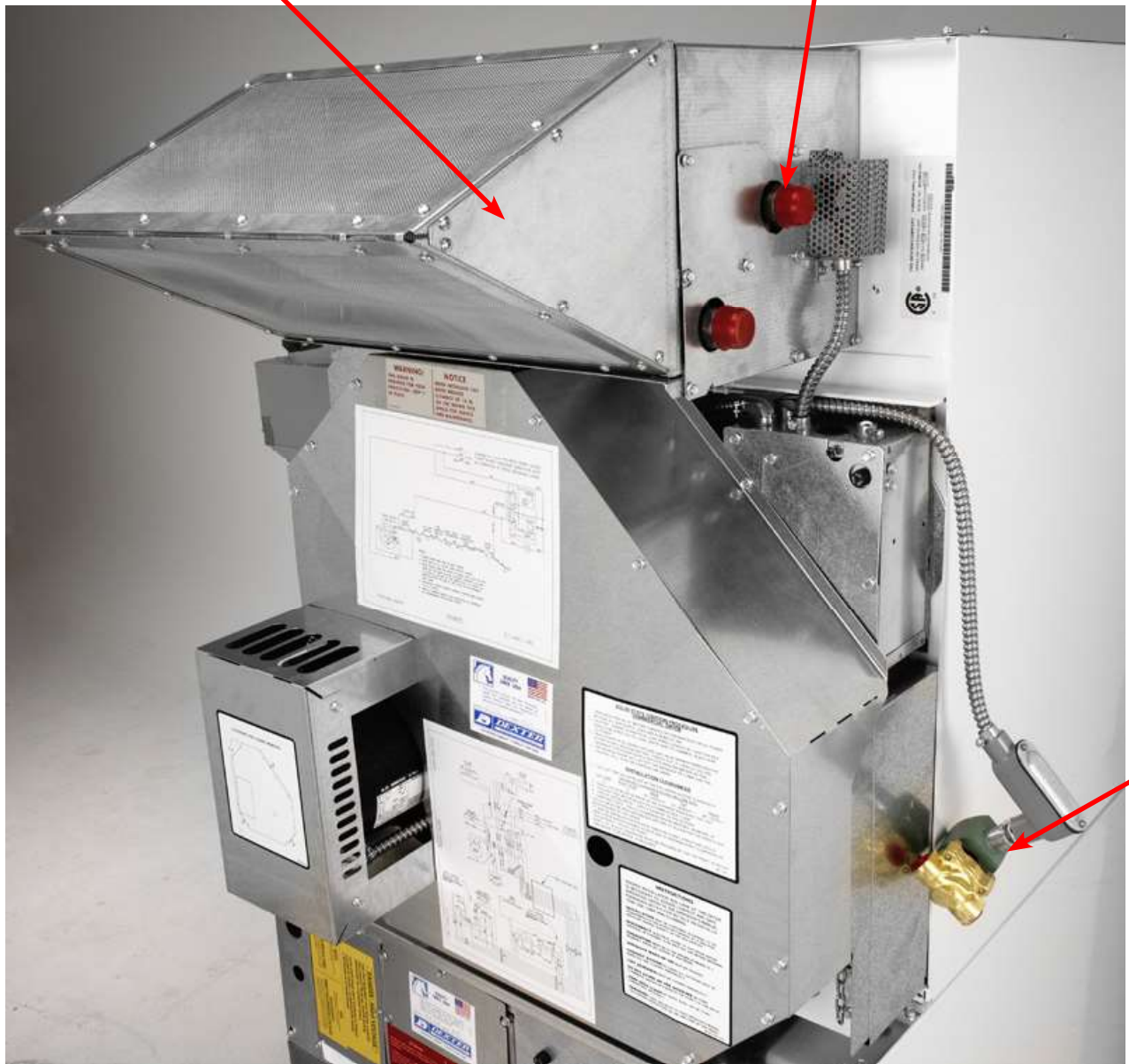
10

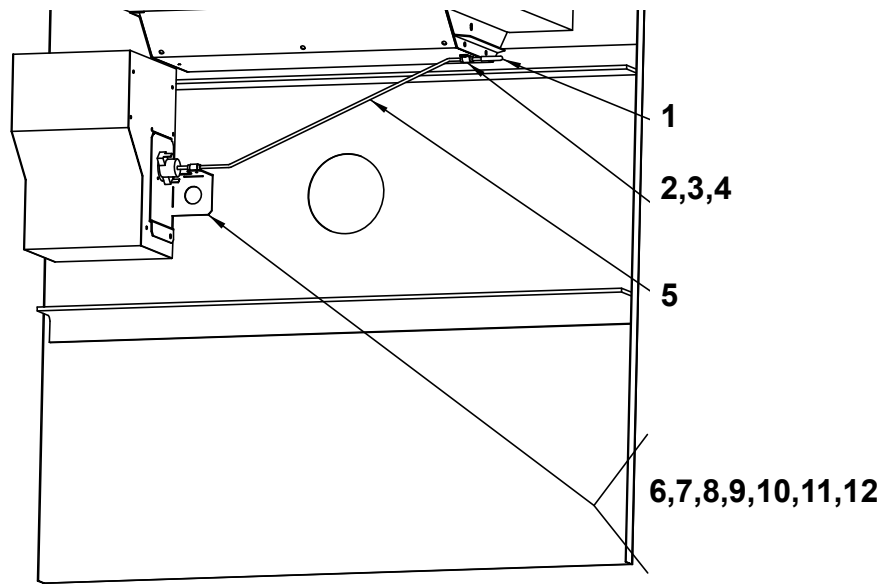
SWD Dryer Steam Heated 60hz Steam Dryer -10FS

Key	Description	Part Number	Qty
1	Coil-Heating, Steam	9089-046-001	1
2	Valve-Solenoid, Steam	9379-193-001	1
*	Label-Coil Lint screen	8502-717-001	1
*	Booklet, Owners	8514-075-001	1
*	Diagram-Wiring Label	9345-998-002	1
*	Schematic-Wiring Label	9345-997-002	1

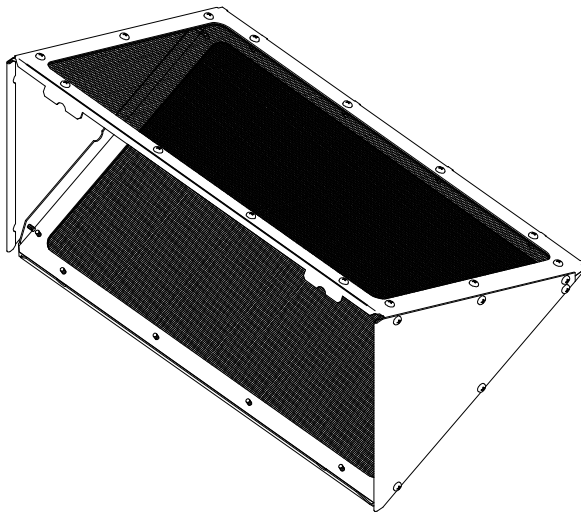
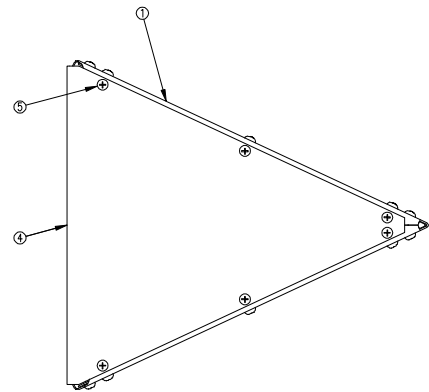
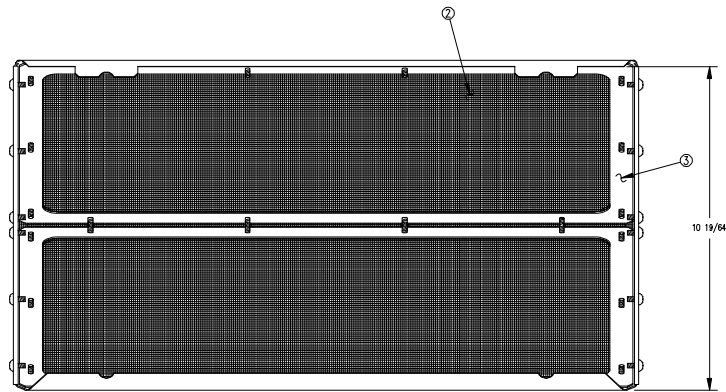


Screen Assembly see Page 81





Key	Description	Part Number	Qty
1	Cap, Actuator-Red	0935-133-001	1
2	Spacer, Actuator	9538-157-003	1
3	Clamp, Actuator	9079-121-002	1
4	Screw, Clamp	9545-035-004	1
5	Actuator, Rod	9008-009-001	1
6	Bracket, Overtemp Thermostat	9029-136-001	1
7	Screw, Bracket	9545-008-024	2
8	Spacer, Thermostat	9538-157-003	2
9	Thermostat, Overtemp (resetable)	9576-207-008	1
10	Screw, Thermostat	9545-045-008	2
11	Clamp (Thermostat to Actuator)	9079-121-002	1
12	Screw (Clamp thermostat to Actuator)	9545-035-004	1

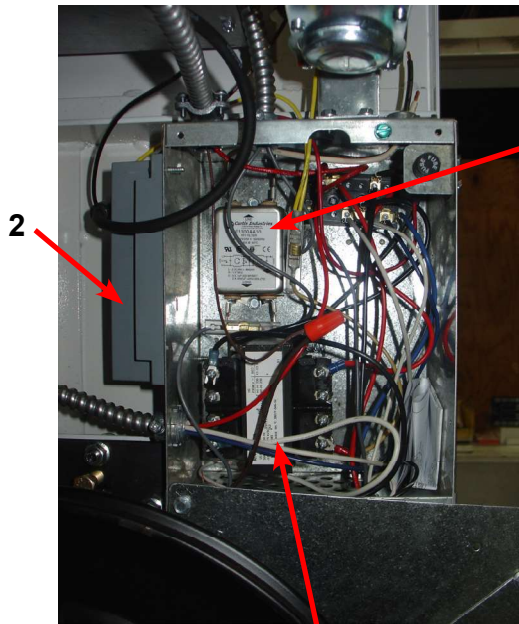


Key	Description	Part Number	Qty
	Lint Screen Assy (includes 1-5)		1
1	Frame- Lint Screen, Intake Steam	9181-030-001	1
2	Screen-Lint	9555-057-005	1
3	Retainer-Lint Screen	9486-153-001	2
4	Side-Lint Screen Assy, Intake	9551-034-001	2
5	Screw-10B x 3/8	9545-008-021	40

Section 7:

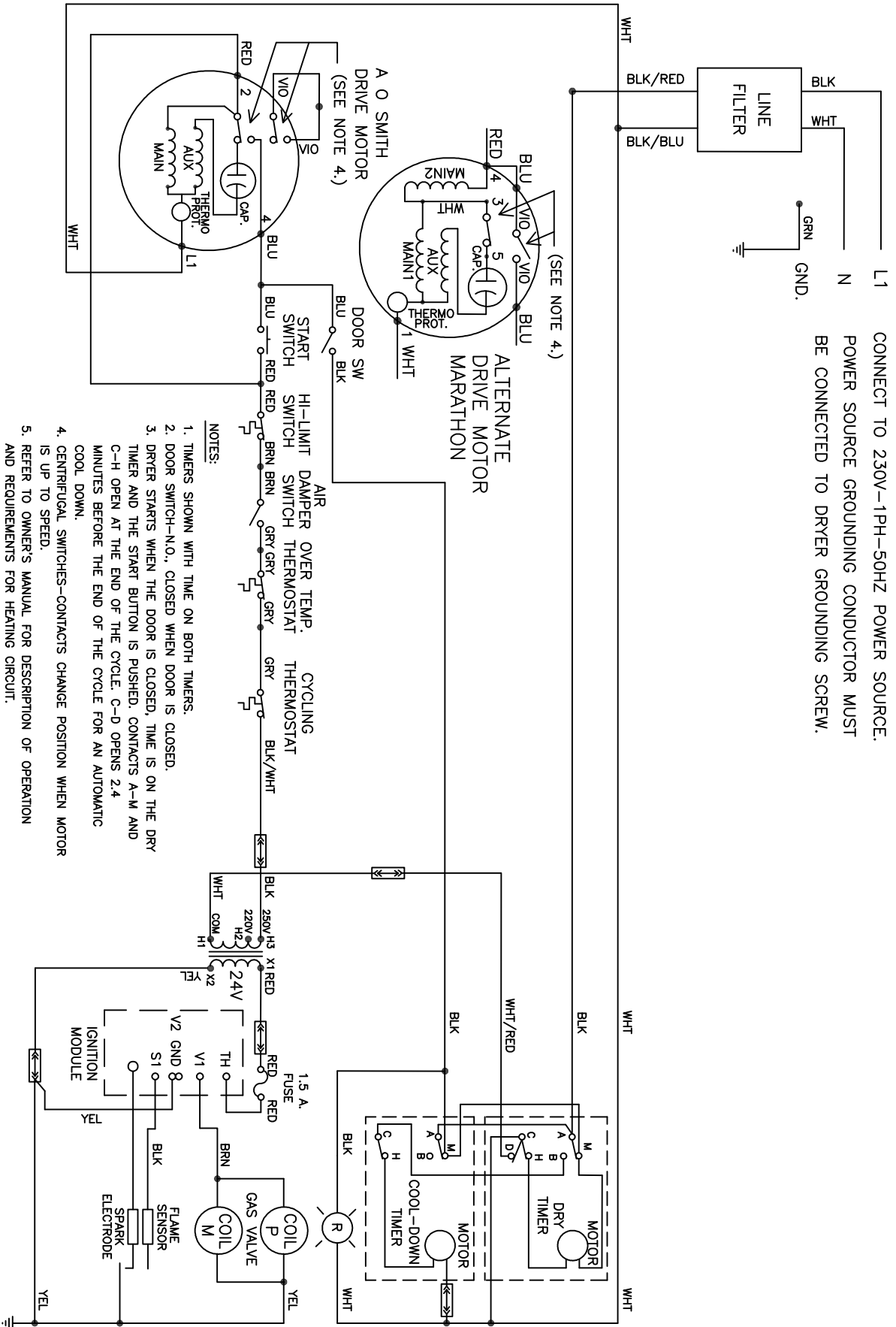
50 Hz Gas Dryer

Key	Description	Part Number	Qty
1	FILTER-LINE,EMI	9183-030-001	1
	FILTER-EMI,3A,115/250V	9183-047-001	1
*	MOTOR-DRY,MRTHON(30#STK),50HZ (Visually the same as 60HZ)	9376-318-001	1
*	PULLEY-DRIVE,MACHINED	9453-169-009	1
2	CONTROLSASSEMBLY-FENWAL	9857-140-001	1
*	CONTROLSASY-ELEC,STKW/D(W/IR)	9857-148-002	1
3	TRANSFORMER-CONTROL	8711-008-002	1
*	RELAY, Motor Control	5192-288-001	1
*	INSTRUCTIONS-TRANSFORMCONNECT	8507-230-003	1
*	INSTRUCTIONS-AUSSIEADDENDUM	8507-298-001	1
*	LABEL-AUSSIEWARNING	8502-698-001	1
*	WIRINGLABEL-SCHEMATIC (-21)	9345-904-001	1
*	WIRINGLABEL-DIAGRAM (-21)	9345-905-001	1



Key	Description	Part Number	Qty
4	KIT-HONEYWELLVR86VALVEFLANGE	9732-162-001	2
5	CONTROLASSEMBLY-GAS	9857-132-004	1
*	Orifice-Natural, #32	9425-069-009	2
*	LP Conversion Kit	9732-179-001	1
*	Orifice-LP, #50	9425-069-008	2

Wiring Schematic for Dryer 50hz 230V -21

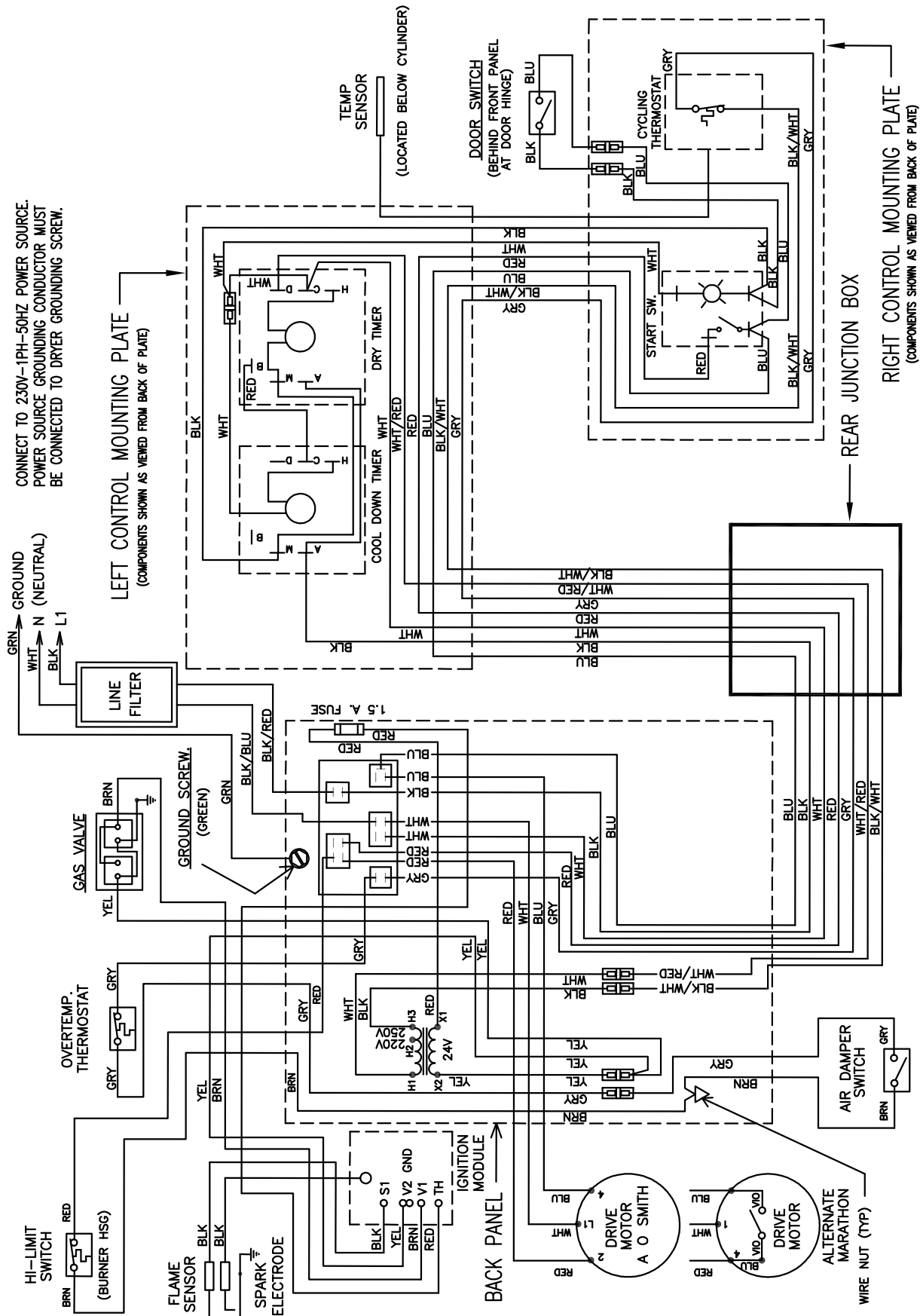


9345-904-001F

SCHEMATIC

DSTD30HT-21, DATD30HT-21
 DSTC30HT-21, DATC30HT-21
 DSTG30HT-21, DATG30HT-21

Wiring Diagram for Dryer 50hz 230V -21



Section 8:

50 Hz Electric

Heated Dryer:

Parts and

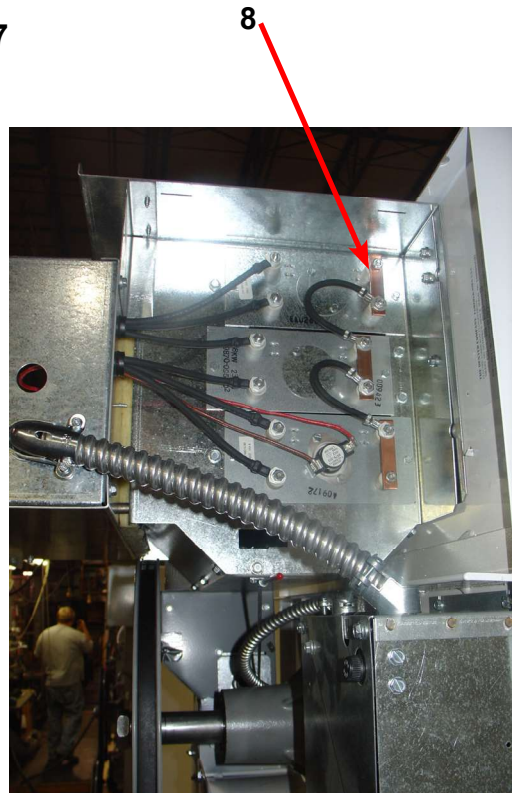
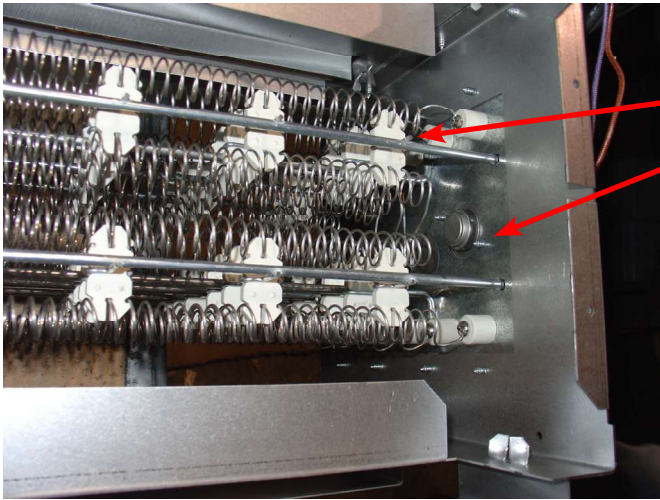
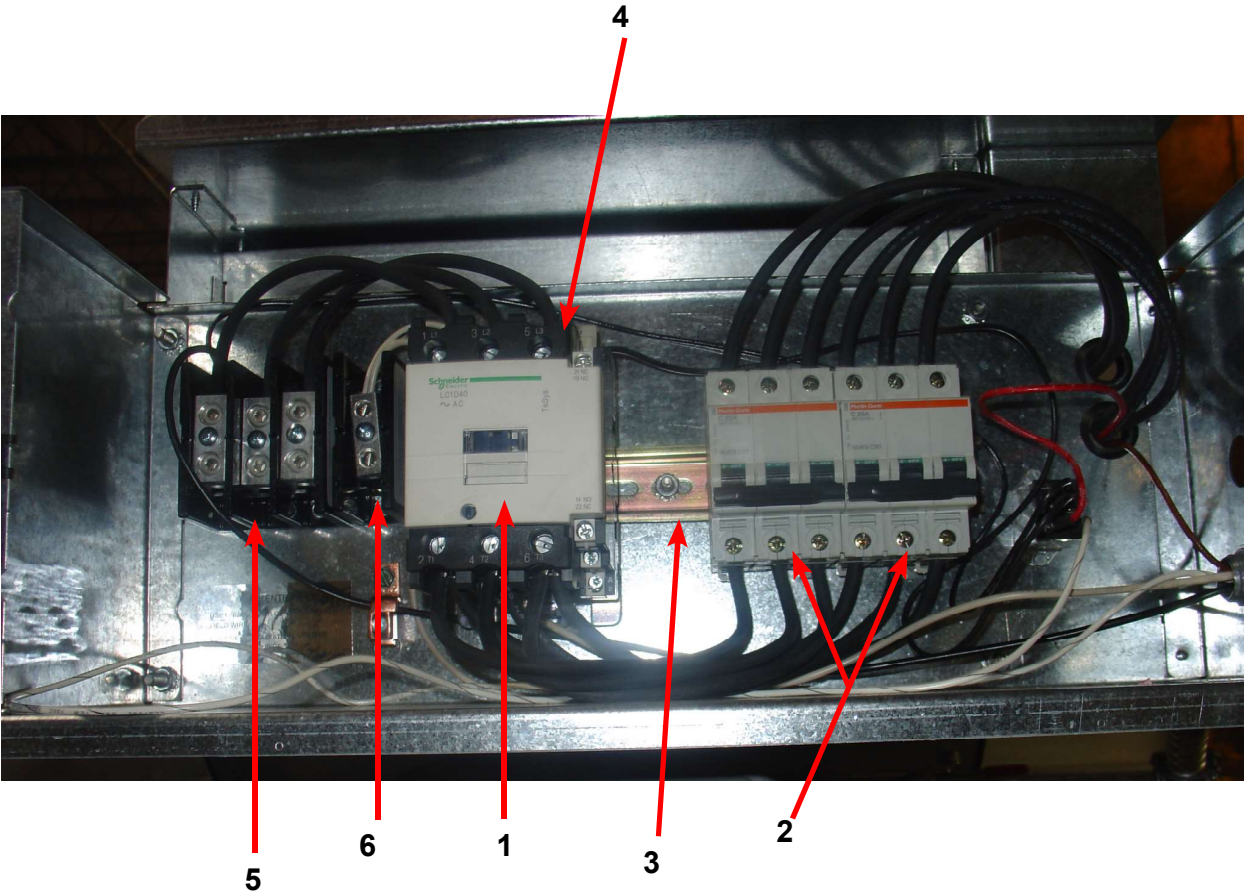
Wiring Diagrams

SWD Dryer Electric Heated DSTD30HT_-27FL

Key	Description	Part Number	Qty
1	Relay-Con 1	5192-294-001	1
2	Circuit Breaker 40 Amp	5198-214-001	2
3	RAIL-DIN,35X15MM	9488-011-002	1
4	VARISTOR-COILSUPPRESSOR	9377-003-001	1
5	BLOCK-POWER,3POLE	9897-037-001	1
7	HEATER-ELECTRICELEMENT	9870-093-005	3
*	LABEL-WARNING,HIGHVOLTAGE	8502-614-005	1
*	LABEL-WARNING	8502-639-001	1
*	LABEL-WARN,FIREHAZARD(FRENCH)	8502-702-001	1
*	LABEL-EXHAUSTWARNING	8502-708-001	2
*	LABEL-WARNINGFOR208V	8502-711-001	1
*	BOOKLET-OWNERS,SWD	8514-067-001	1
*	WIRINGLABEL-SCHEMATIC	9506-185-001	1
*	WIRINGLABEL-DIAGRAM	9506-186-001	1
8	JUMPER-STRAIGHT (see Drawing Page 88)	9295-005-002	4
9	High Limit Thermostat (see Drawing Page 88 for mounting)	9576-203-002	1

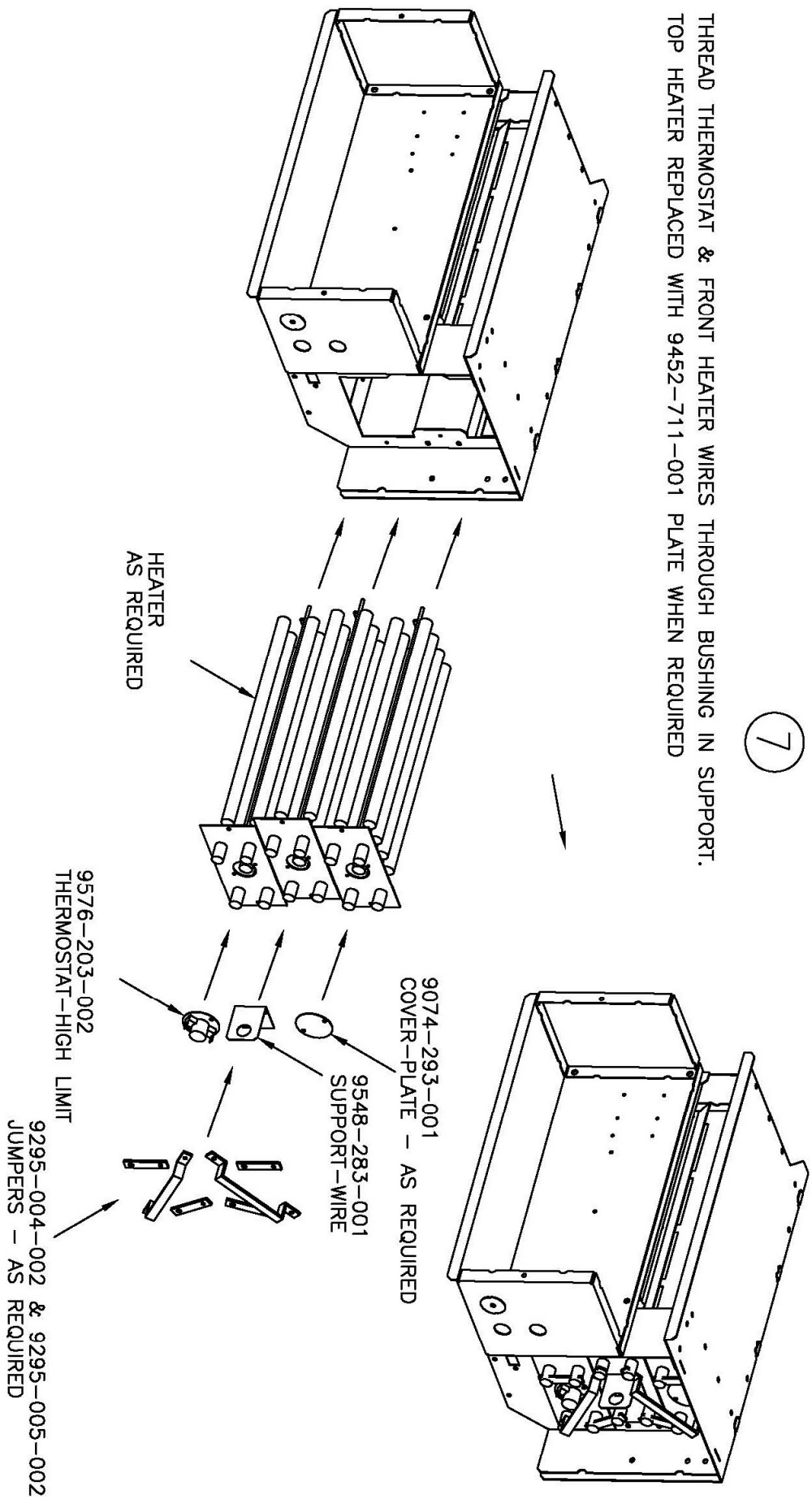
SWD Dryer Electric Heated DSTD30HT_-29FN

Key	Description	Part Number	Qty
1	Relay-Con 1	5192-291-002	1
2	Circuit Breaker 25Amp	5198-215-002	2
3	RAIL-DIN,35X15MM	9488-011-002	1
4	VARISTOR-COILSUPPRESSOR	9377-003-001	
5	BLOCK-POWER,3POLE	9897-037-001	1
6	BLOCK-POWER,1POLE	9897-038-001	1
7	HEATER-ELECTRICELEMENT	9870-095-002	3
*	LABEL-WARNING,HIGHVOLTAGE	8502-614-005	1
*	LABEL-WARNING	8502-639-001	1
*	LABEL-WARN,FIREHAZARD(FRENCH)	8502-702-001	1
*	LABEL-EXHAUSTWARNING	8502-708-001	2
*	LABEL-WARNINGFOR208V	8502-711-001	1
*	BOOKLET-OWNERS,SWD	8514-067-001	1
*	WIRINGLABEL-SCHEMATIC	9506-348-001	1
*	WIRINGLABEL-DIAGRAM	9506-349-001	1
*	Wire Jumper (See Wiring Informitive)	8220-060-003	2
8	JUMPER-STRAIGHT (see Drawing Page 88)	9295-005-002	2
9	High Limit Thermostat (see Drawing Page 88 for mounting)	9576-203-002	1

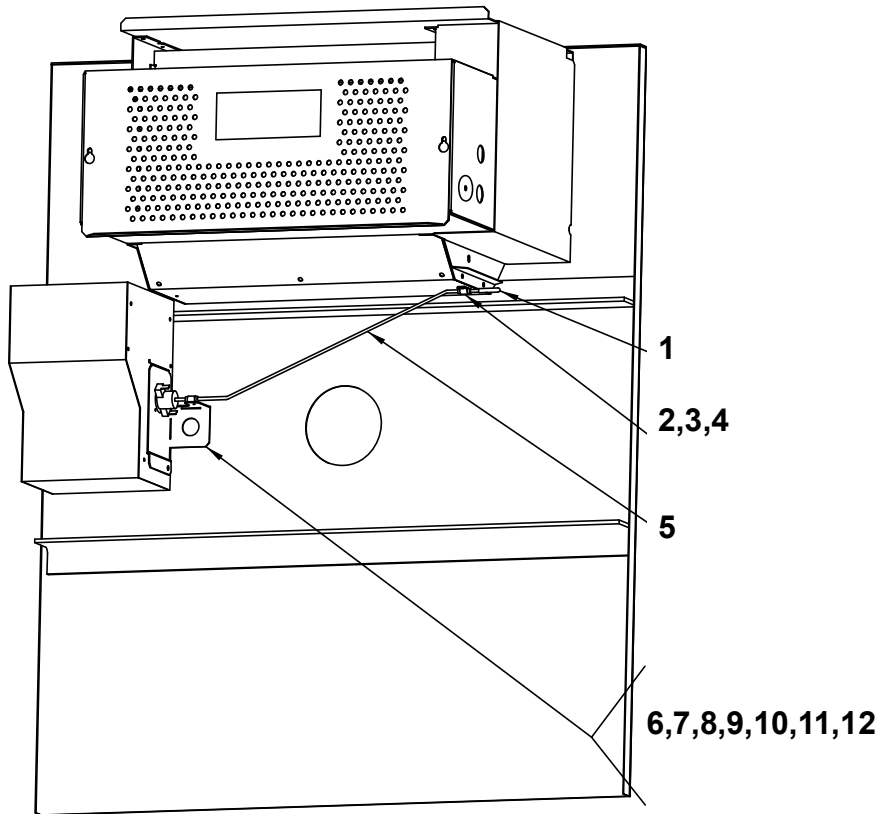


7

THREAD THERMOSTAT & FRONT HEATER WIRES THROUGH BUSHING IN SUPPORT.
TOP HEATER REPLACED WITH 9452-711-001 PLATE WHEN REQUIRED



9545-045-008 SCREW (AS REQUIRED)



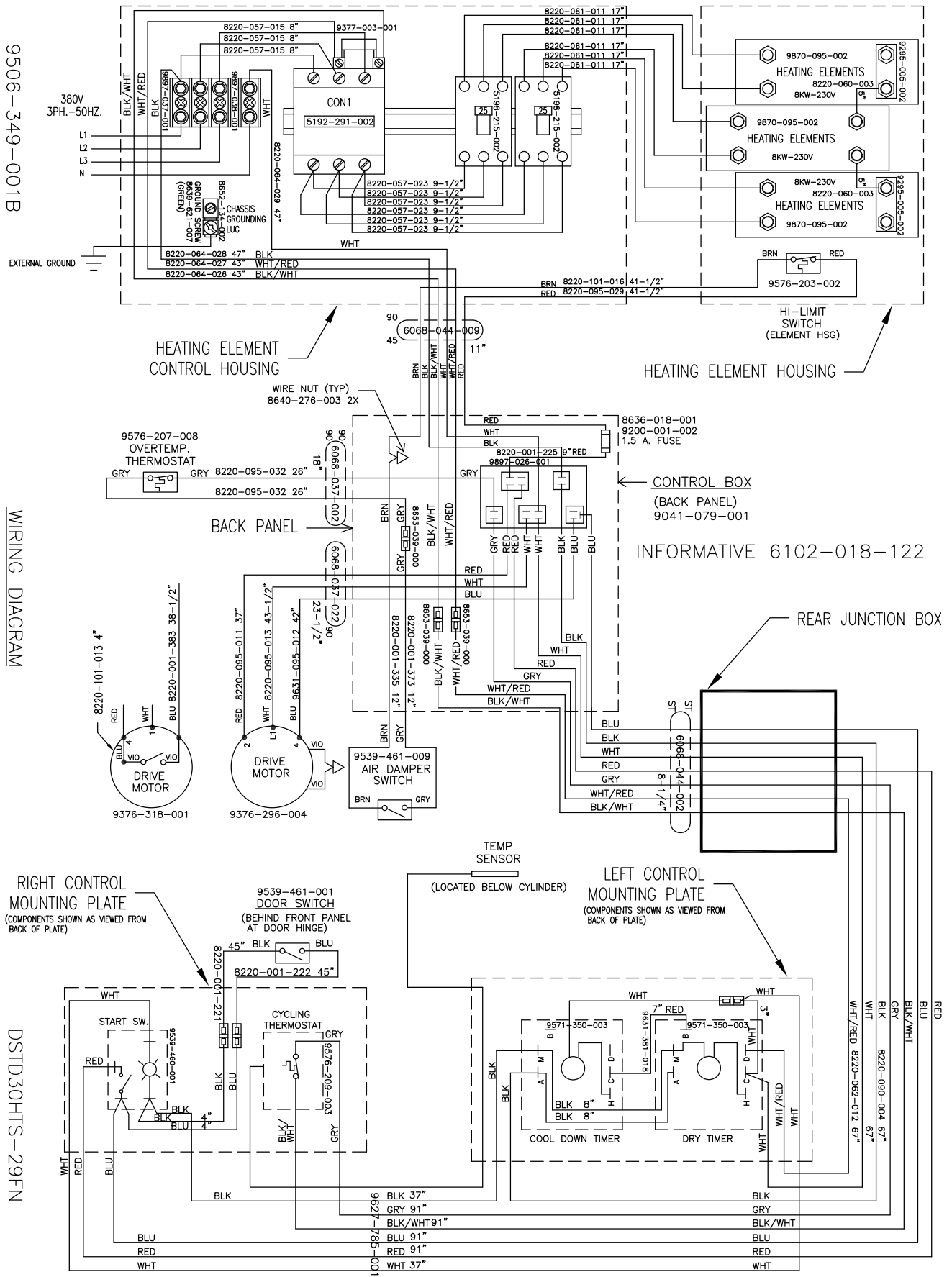
Key	Description	Part Number	Qty
1	Cap, Actuator-Red	0935-133-001	1
2	Spacer, Actuator	9538-157-003	1
3	Clamp, Actuator	9079-121-002	1
4	Screw, Clamp	9545-035-004	1
5	Actuator, Rod	9008-009-001	1
6	Bracket, Overtemp Thermostat	9029-136-001	1
7	Screw, Bracket	9545-008-024	2
8	Spacer, Thermostat	9538-157-003	2
9	Thermostat, Overtemp (resetable)	9576-207-008	1
10	Screw, Thermostat	9545-045-008	2
11	Clamp (Thermostat to Actuator)	9079-121-002	1
12	Screw (Clamp thermostat to Actuator)	9545-035-004	1

Wiring Informative for 50hz Dryer -29FN

9506-349-001B

WIRING DIAGRAM

DSTD30HTS-29FN

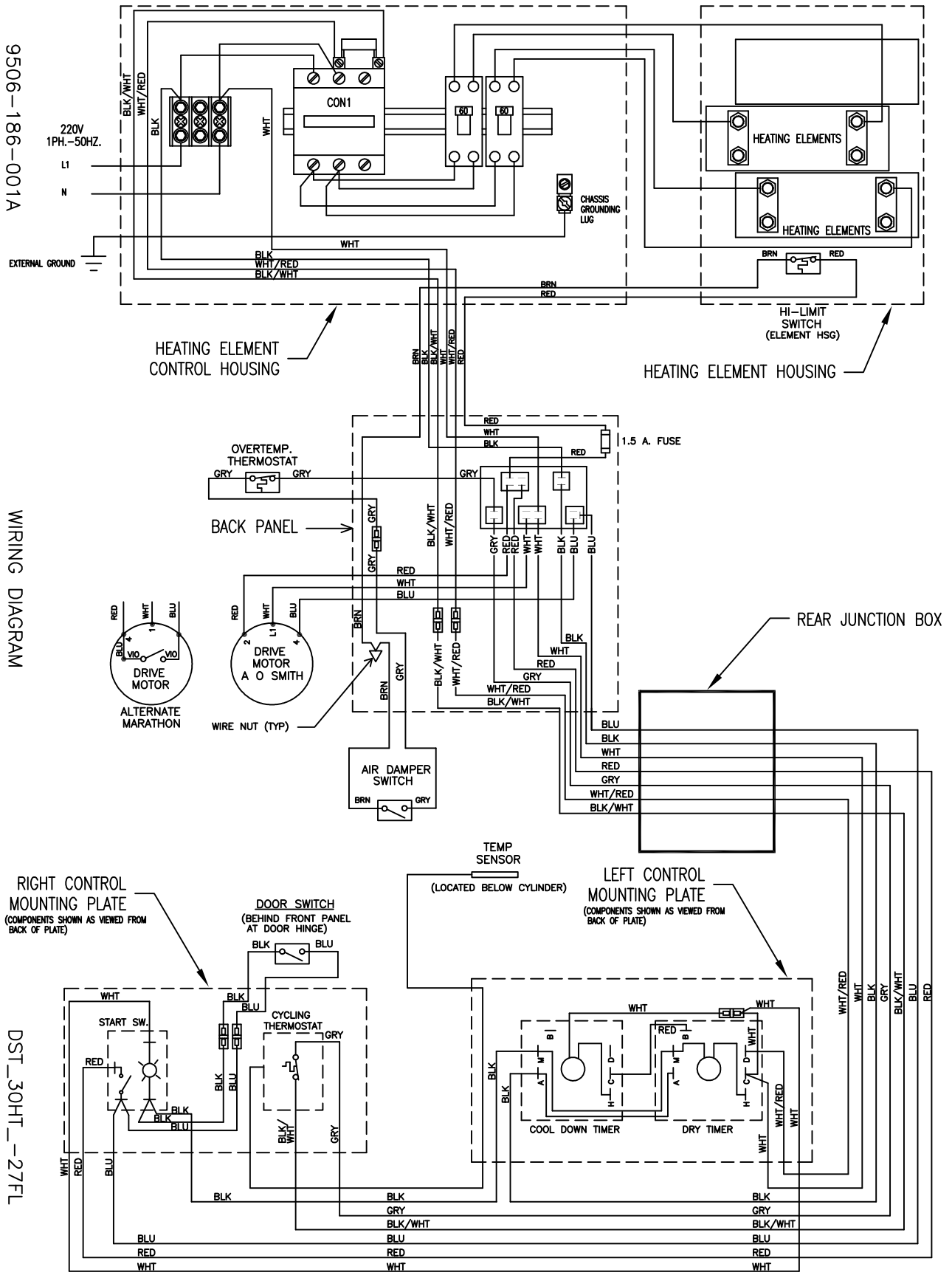


Wiring Diagram for 50hz Dryer -27FL

9506-186-001A

WIRING DIAGRAM

DST_30HT_-27FL



Wiring Diagram for 50hz Dryer -29FN

9506-349-001A

WIRING DIAGRAM

DSTD30HTS-29FN

