

Section 5

Parts Data CABINET GROUP

| Key | Part Number | Description | Qty. |
|-----|--------------|--|------|
| * | 9960-256-021 | Door Assy., Loading Complete - White | 1 |
| * | 9960-256-025 | Door Assy., Loading Complete - SS | 1 |
| * | 9960-256-022 | Door Assy., Loading complete - Almond..... | 1 |
| 1 | 9960-255-007 | Door Ring, Loading | 1 |
| 2 | 9982-280-002 | Plate Assy., Hinge - White | 1 |
| 2 | 9982-280-011 | Plate Assy., Hinge - SS | 1 |
| 2 | 9982-280-005 | Plate Assy., Hinge - Almond..... | 1 |
| * | 9545-012-015 | Screw, Hinge to Door 10-32 x 3/8" | 4 |
| * | 8640-413-002 | Nut, Hinge to Door #10-32 UNF | 4 |
| 3 | 9212-002-003 | Glass, Door | 1 |
| 4 | 9206-164-009 | Gasket, Glass | 1 |
| * | 9548-117-000 | Support, Door Glass (inside gasket) | 1 |
| 5 | 9206-420-002 | Gasket, Outer Rim | 1 |
| 6 | 9244-082-001 | Handle, Loading Door | 1 |
| * | 9545-018-017 | Screw, Handle 1/4"-13 x 1 1/4" | 2 |
| * | 9531-033-001 | Stud, Door Catch | 1 |
| * | 8640-413-001 | Nut, Hex | 1 |
| * | 8640-413-003 | Nut , Acorn # 10-32 | 1 |
| * | 9086-015-002 | Catch, Loading Door | 1 |
| 7 | 9989-460-006 | Panel Assy., Front - White | 1 |
| 7 | 9989-460-004 | Panel Assy., Front - SS | 1 |
| 7 | 9989-460-007 | Panel Assy., Front - Almond | 1 |
| * | 9942-027-008 | Coin Vault Assy., White | 1 |
| * | 9942-027-006 | Coin Vault Assy., Gray | 1 |
| * | 9942-027-007 | Coin Vault Assy., Almond | 1 |
| 8 | 9108-100-004 | Door, Upper Service - SS | 1 |
| 8 | 9108-100-006 | Door, Upper Service - White | 1 |
| 8 | 9108-100-007 | Door, Upper Service - Almond | 1 |
| 9 | 9578-090-002 | Trim, Door-Upper Service | 1 |
| * | 6292-006-006 | Key (only) (FJWCC) | 1 |
| 10 | 8650-006-003 | Lock w/ nut, Upper Service Door | 1 |
| * | 8638-211-001 | Rivet, Drive | 2 |
| * | 8641-581-005 | Washer, Flat 3/16" | 2 |
| * | 9548-243-002 | Support, Upper Door | 1 |
| 11 | 9412-083-002 | Nameplate, Commercial Dryer | 1 |
| 12 | 9545-012-003 | Screw, Chrome 10-32 x 1/2" | 4 |
| * | 8641-436-004 | Washer, Fiber | 4 |
| * | 8641-582-019 | Lockwasher # 10 | 10 |
| * | 8640-399-001 | Nut, Spring U type 10Z | 6 |

* Not Illustrated



CABINET GROUP (continued)

| Key | Part Number | Description | Qty. |
|-----|--------------|---|------|
| 13 | 9544-047-002 | Strap, Hinge - White | 1 |
| 13 | 9544-047-007 | Strap, Hinge - Gray | 1 |
| 13 | 9544-047-005 | Strap, Hinge - Almond..... | 1 |
| * | 9545-008-008 | Screw, Hinge to Panel 10T-32 x 1/2" | 4 |
| 14 | 9545-052-001 | Screw, Door to Hinge Strap (special) | 1 |
| 15 | 8641-436-003 | Washer, Fiber/ Plastic | 1 |
| 16 | 9960-261-001 | Door Assy., Lower Service - SS | 1 |
| 16 | 9960-261-003 | Door Assy., Lower Service - White | 1 |
| 16 | 9960-261-004 | Door Assy., Lower Service - Almond..... | 1 |
| 17 | 9578-088-001 | Trim, Door - Lower Service | 1 |
| 18 | 9545-008-021 | Screw,Pn Hd Cr., #10Bx3/8 | 5 |
| 19 | 9578-084-002 | Trim, Kick - Lower Service Door | 1 |
| * | 9435-004-010 | Overlay - Trim, Kick | 1 |
| 20 | 9545-008-010 | Screw, Tr Hd Cr-#10x1/2 Blk | 3 |
| 21 | 8650-006-003 | Lock w/nut, Lower Service Door | 1 |
| * | 6292-006-006 | Key (only), FJWCC..... | 1 |
| * | 8544-005-000 | Leg, Leveling | 4 |
| * | 9049-074-001 | Baffle, Cabinet- Left | 1 |
| * | 9049-074-002 | Baffle, Cabinet- Right | 1 |
| * | 9545-008-003 | Screw, #10x1/2 TEK | 8 |
| 22 | 9074-273-001 | Cover, Cabinet | 1 |
| * | 9545-008-024 | Screw | 10 |
| * | 9277-049-001 | Insulation, Front Panel (Top) | 1 |
| * | 9277-049-002 | Insulation, Front Panel (Bottom) | 1 |
| * | 9277-051-001 | Insulation, Side Panels | 4 |
| * | 9277-050-003 | Insulation, Lower Service Door | 1 |
| * | 9277-047-001 | Insulation, Top Left Cabinet Side (by burner housing) | 1 |
| * | 9277-047-002 | Insulation, Upper Service Door | 1 |

* Not Illustrated



Control Housing Group

| Key | Part Number | Description | Qty. |
|-----|--------------|---|------|
| 1 | 9471-011-002 | Electronic Control | 1 |
| 2 | 9538-157-016 | Spacers, Circuit Board - #6 x 1/2 | 3 |
| 3 | 9538-157-017 | Spacers, Circuit Board - #6 x 7/8 | 3 |
| 4 | 8640-411-001 | Nut, Circuit Board | 4 |
| 5 | 8640-411-003 | Nut, Keps - Circuit Board (for grounding) | 1 |
| 6 | 9627-651-001 | Harness, Wiring (Electronic Control) | 1 |
| 7 | 9801-077-001 | Switch Assy., Membrane | 1 |
| 8 | 9501-004-002 | Sensor, Temperature | 1 |
| 9 | 9627-679-001 | Harness, Temperature Sensor | 1 |
| 10 | 9029-111-001 | Bracket, Sensor Mounting | 1 |
| 11 | 9982-305-002 | Plate Assy., Electronic Control | 1 |
| 12 | 9451-146-005 | Pin, Hinge - Control Plate Assy. | 2 |
| 13 | 9545-045-002 | Screw, Mtg. (left edge) | 1 |
| 14 | 9039-981-001 | Nut, Angled Spring | 1 |
| 15 | 8502-640-004 | Label, Control Instruction/ Warning | 1 |
| 16 | 9940-013-001 | Chute Ass'y Coin | 1 |
| * | 9545-008-024 | Screw, Coin Chute Mtg. | 1 |
| 17 | 9897-026-001 | Terminal Block | 1 |
| * | 9545-031-004 | Screw Terminal Block Mtg. | 2 |
| 18 | 9053-067-001 | Bushing, Door Switch Wires | 1 |
| 19 | 9021-002-016 | Coin Acceptor Complete (includes #20) | 1 |
| * | 9732-126-001 | Switch, Coin | 1 |
| 20 | 9063-004-001 | Bail, Coin Return | 1 |
| * | 8640-406-009 | Nut, Bail mtg. | 2 |
| * | 9545-025-001 | Screw, Acceptor Mtg. | 2 |
| * | 8641-573-012 | Lockwasher | 2 |
| 21 | 9631-403-003 | Wire Ass'y, High Voltage | 1 |
| * | 9627-711-001 | Harness, Low Voltage Ignition | 1 |
| 22 | 9054-045-001 | Fuseholder | 1 |
| 23 | 8636-018-004 | Fuse, 2.5 amps | 1 |
| 24 | 9545-031-005 | Screw #6B x 3/8 | 1 |
| 25 | 9857-116-002 | Control, Ignition | 1 |
| 26 | 9545-044-002 | Screw 6-32 x 1" | 2 |
| 27 | 8640-411-003 | Nut, Hex Keps #6-32 | 2 |

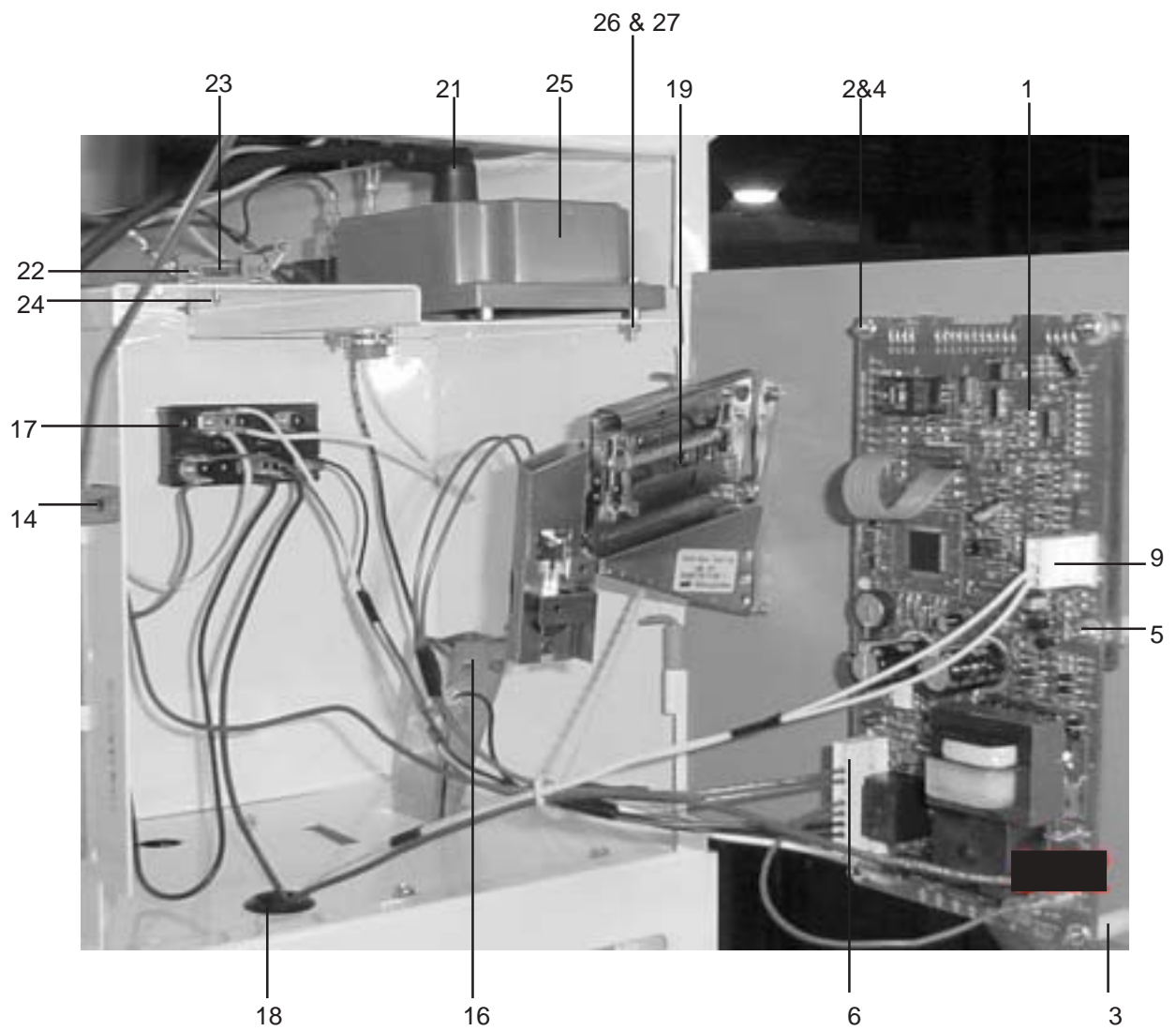
* Not Illustrated



8

10

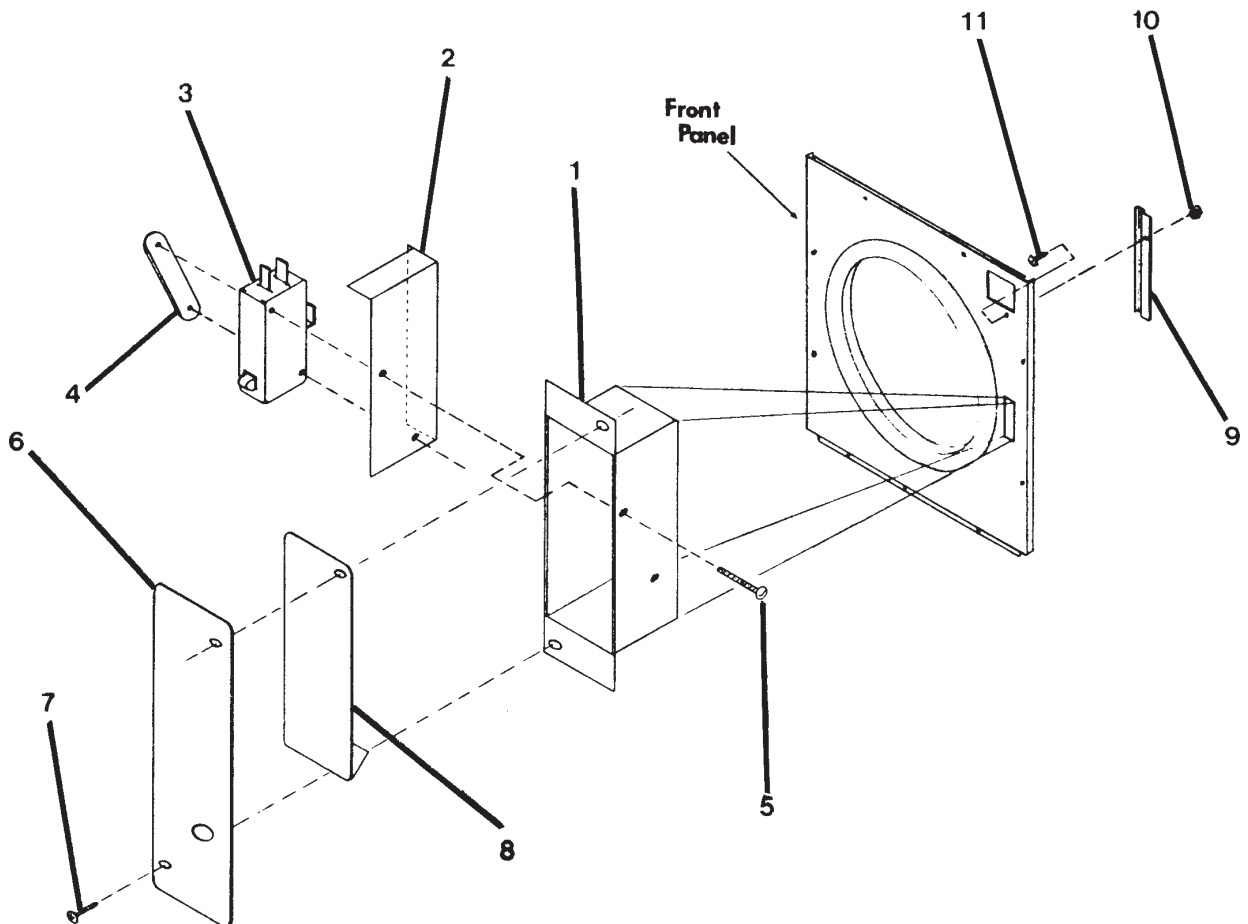
9



DOOR SWITCH GROUP

| Key | Part Number | Description | Qty. |
|-----|--------------|---------------------------------------|------|
| 1 | 9041-076-001 | Box, Door Switch | 1 |
| 2 | 9550-159-001 | Shield, Door Switch | 1 |
| 3 | 9539-461-001 | Switch, Door | 1 |
| 4 | 8640-401-001 | Nut, Special Twin #4-40 | 1 |
| 5 | 9545-020-001 | Screw, Pn Hd Sl.#4-40x5/8 | 2 |
| 6 | 9074-255-001 | Cover, Switch Box | 1 |
| 7 | 9545-008-020 | Screw, Box Cover 10 AB x 3/4" | 2 |
| 8 | 9008-004-001 | Actuator, Door Switch | 1 |
| 9 | 6068-041-002 | Conduit | 1 |
| 10 | 9545-012-003 | Screw. 8-32 x 3 3/16" | 1 |
| * | 8641-436-000 | Washer, Fiber | 1 |
| 11 | 8640-413-004 | Nut, ElasticStop 10 -32 | 1 |
| * | 8220-001-221 | Wire Assy., Door Switch - Black | 1 |
| * | 8220-001-222 | Wire Assy., Door Switch - Blue | 1 |

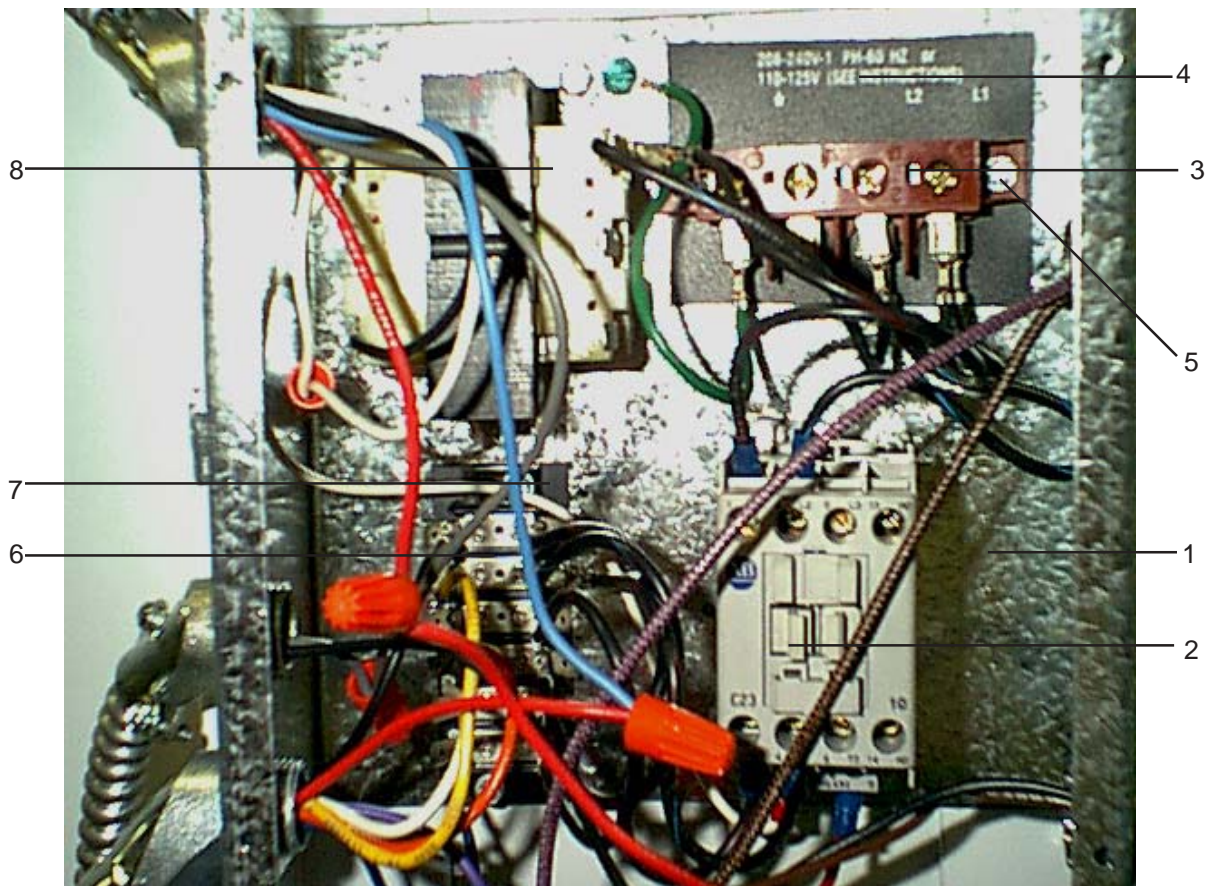
* Not Illustrated



CONTROL BOX GROUP

| Key | Part Number | Description | Qty. |
|-----|--------------|--------------------------------------|------|
| 1 | 9041-081-001 | Box, Control | 1 |
| * | 9074-280-001 | Cover, Control Box | 1 |
| * | 9545-008-024 | Screw | 4 |
| 2 | 5192-295-011 | Relay | 1 |
| * | 9545-045-007 | Screw, #8Bx 3/4 | 2 |
| 3 | 9897-035-002 | Terminal Block Assembly, Power | 1 |
| 4 | 9558-029-003 | Strip , Terminal Marker..... | 1 |
| 5 | 9545-045-002 | Screw, #8Bx 1/2..... | 2 |
| 6 | 9897-034-001 | Terminal Block Assembly..... | 1 |
| 7 | 9558-027-001 | Strip , Terminal Marker..... | 1 |
| * | 8639-621-007 | Screw, Hx #10-32 x 1/2 (ground)..... | 1 |
| * | 8641-582-006 | Lockwasher, Ex Tooth # 10..... | 1 |
| 8 | 8711-007-001 | Transformer, Control..... | 1 |
| * | 9545-012-009 | Screw , Hx. #10-32x1/2..... | 2 |
| * | 8640-413-002 | Nut, Keps - #10-32..... | 2 |

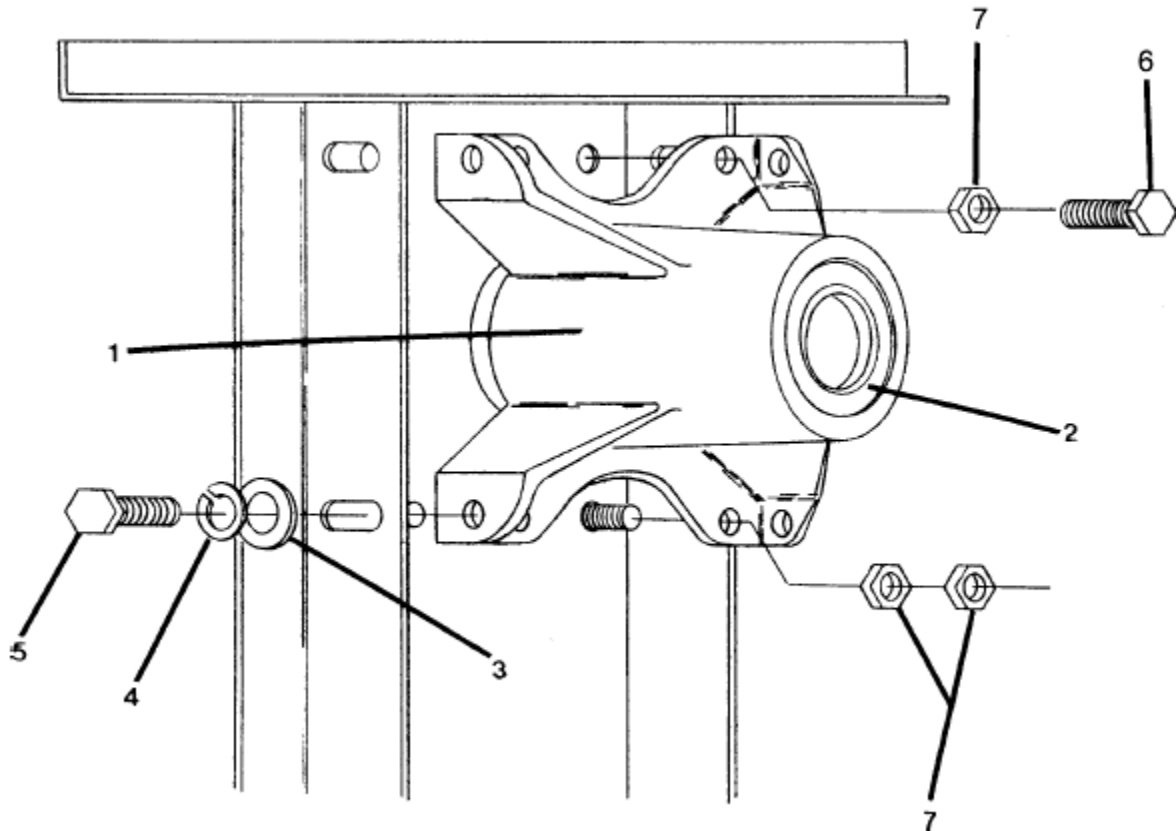
* Not Illustrated



BEARING HOUSING GROUP

| Key | Part Number | Description | Qty. |
|-----|--------------|---|------|
| * | 9803-189-001 | Housing, Bearing Ass'y w one (rear) bearing | 1 |
| 1 | 9241-183-003 | Housing, Bearing | 1 |
| 2 | 9036-159-001 | Bearing, Ball-Rear | 1 |
| * | 9036-159-002 | Bearing, Ball-Front | 1 |
| 3 | 8641-581-026 | Washer, Flat 1/2" | 4 |
| 4 | 8641-582-004 | Lockwasher spring 1/2" | 4 |
| 5 | 9545-017-004 | Bolt, 1/2-13 x 1 | 4 |
| 6 | 9545-059-003 | Screw, 7/16-14 x 1 1/2 | 2 |
| * | 8641-582-013 | Lockwasher, 7/16 | 2 |
| 7 | 8640-416-001 | Nut, 7/16-14 x 1 1/2 | 4 |
| * | 9487-234-001 | Ring, Tolerance | 1 |

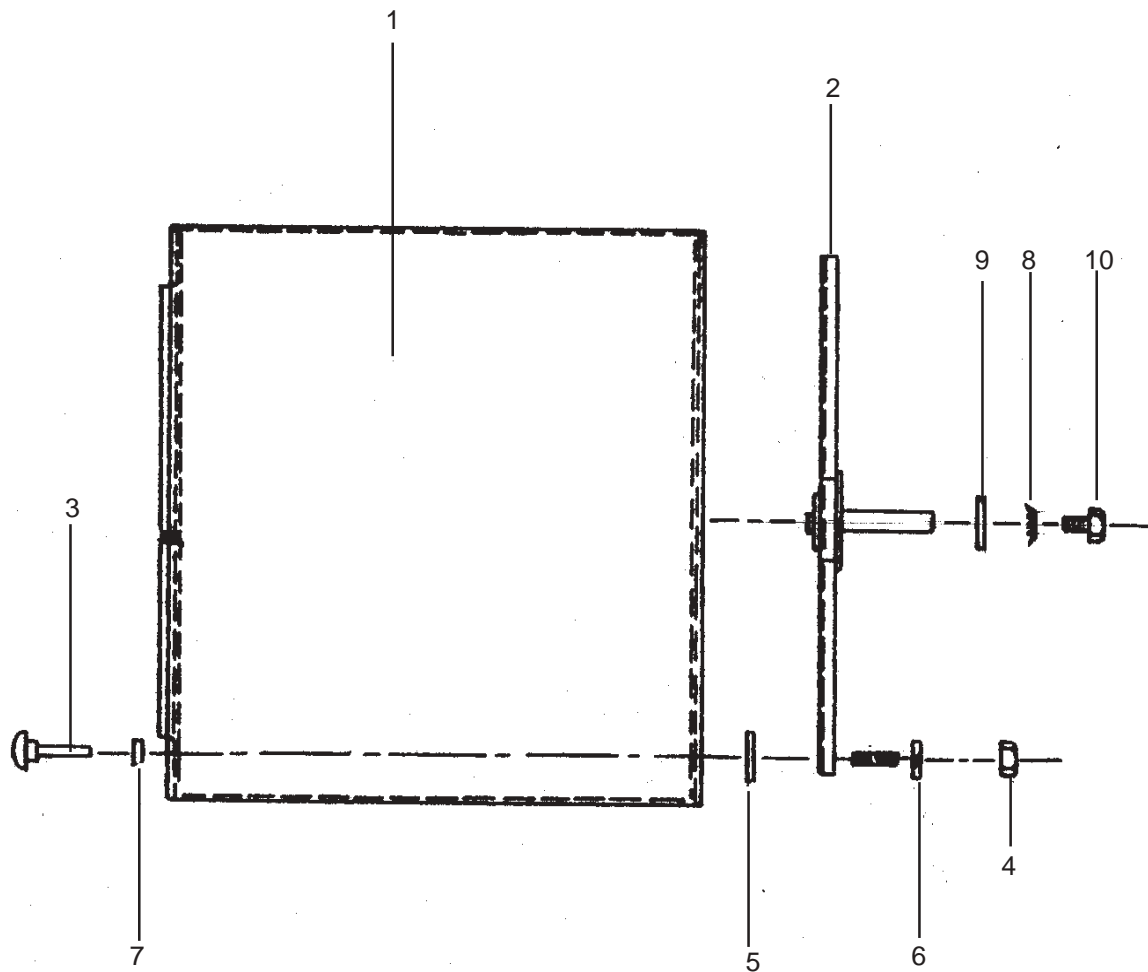
* Not Illustrated



TUMBLER GROUP

| Key | Part Number | Description | Qty. |
|-----|--------------|--|------|
| 1 | 9848-118-001 | Tumbler Assy. | 1 |
| * | 9848-118-002 | Tumbler Assy., SS | |
| 2 | 9873-005-001 | Spider Assy., w/bearing on | 1 |
| 3 | 9497-226-001 | Rod, Tumbler | 4 |
| 4 | 8640-417-002 | Nut 1/2"-13 | 4 |
| 5 | 9552-013-000 | Shim | 4 |
| 6 | 8641-582-004 | Washer, Spring Lock - 1/2" | 4 |
| 7 | 8641-587-001 | Washer, Tumbler Rod Special | 4 |
| * | 9487-234-001 | Ring, Tolerance | 1 |
| 8 | 8641-582-016 | Lock Washer ext. tooth 1/2", Tumbler Shaft | 1 |
| 9 | 8641-581-026 | Flat Washer 1/2", Tumbler Shaft | 1 |
| 10 | 9545-017-009 | Screw, Tumbler Shaft 1/2-13 x 1 1/4" | 1 |

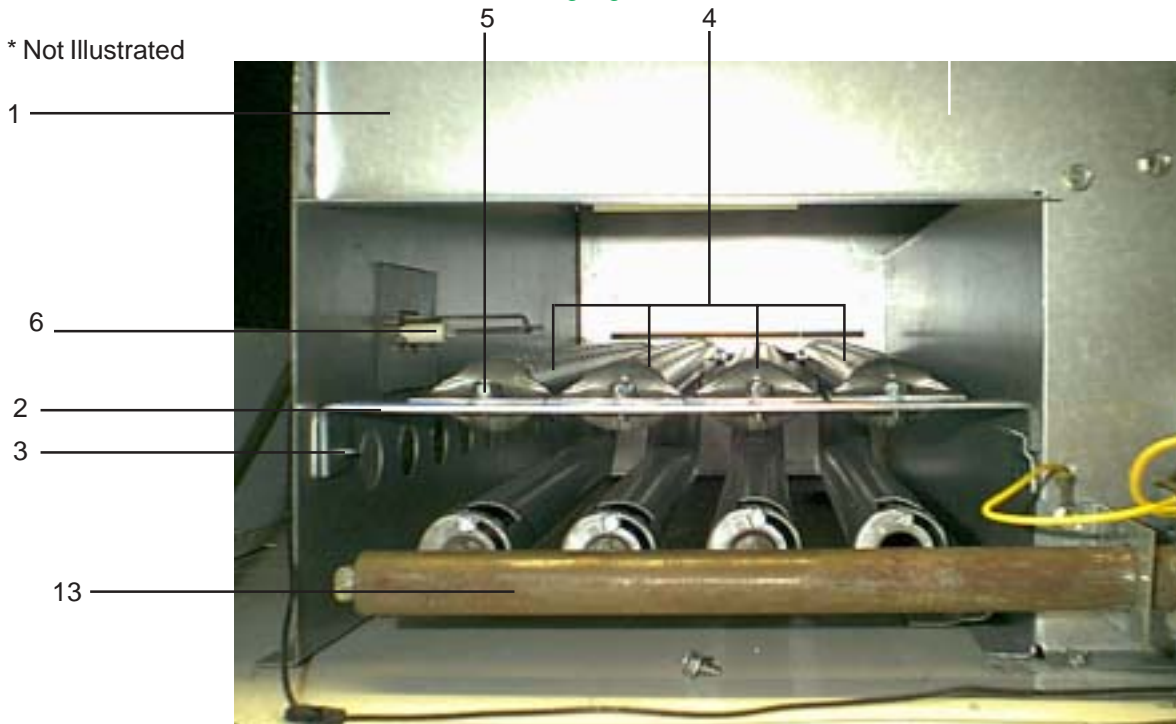
* Not Illustrated

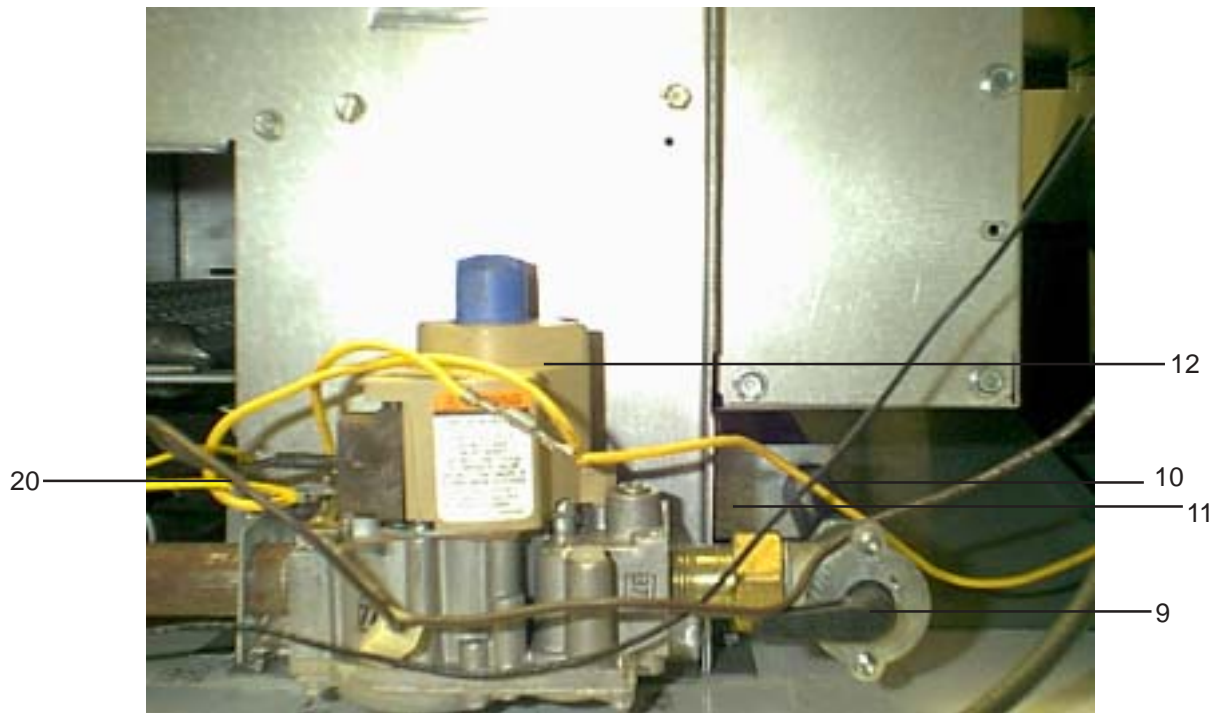
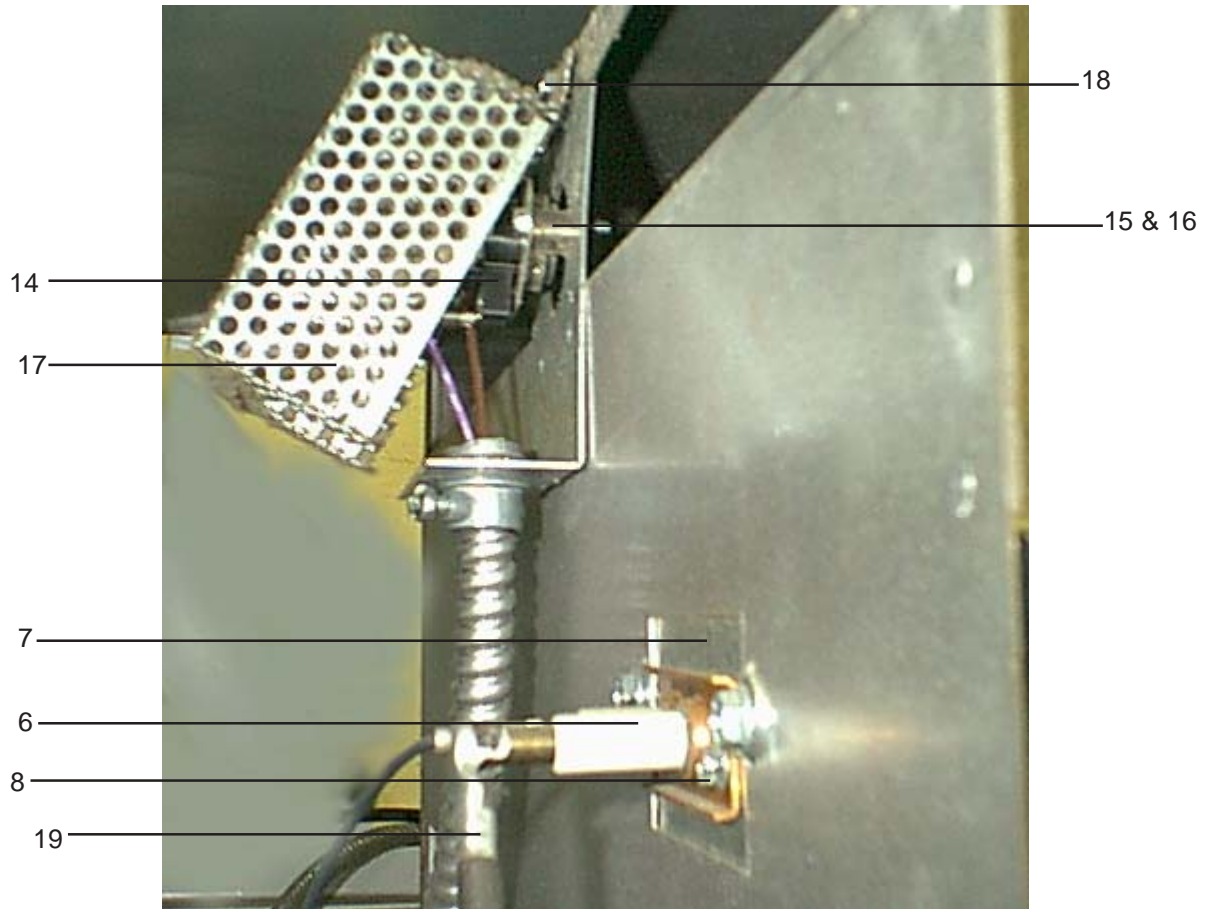


BURNER HOUSING GROUP

| Key | Part Number | Description | Qty. |
|-----|--------------|--|------|
| 1 | 9803-195-001 | Housing Assembly, Burner | 1 |
| * | 9545-008-024 | Screw | 4 |
| 2 | 9548-280-001 | Support, Front Burner | 1 |
| 3 | 9545-008-008 | Screw 10T-32 x 1/2" | 1 |
| 4 | 9048-018-001 | Burner, Main | 4 |
| 5 | 9545-008-008 | Screw 10T-32 x 1/2" | 4 |
| 6 | 9875-002-002 | Electrode, Ignition | 1 |
| 7 | 9452-645-001 | Plate, Electrode Mtg | 1 |
| 8 | 9545-045-001 | Screw, Electrode Mtg 8B x 11/4" | 2 |
| 9 | 9379-164-002 | Valve, Gas Shut-Off w/ brass union | 1 |
| 10 | 9458-020-003 | Pipe, Gas Line | 1 |
| 11 | 9039-915-001 | Bracket, Gas Line Pipe | 1 |
| 12 | 9857-134-002 | Control Assy, Gas | 1 |
| 13 | 9381-011-001 | Manifold Assy., 4 port | 1 |
| * | 9425-069-021 | Orifice, Burner - Natural | 4 |
| * | 9425-069-022 | Orifice, Burner - LP | 4 |
| * | 9732-102-010 | Kit, LP Conversion | 1 |
| 14 | 9576-203-002 | Thermostat, Hi-Limit | 1 |
| 15 | 9538-142-001 | Spacer, Hi-Limit | 2 |
| 16 | 9545-045-007 | Screw 8B x 3/4" | 2 |
| 17 | 9074-234-001 | Cover, Hi-Limit Stat | 1 |
| 18 | 9545-008-024 | Screw 10B x 3/8" | 1 |
| 19 | 9631-403-003 | Wire Ass'y, High Voltage | 1 |
| 20 | 9627-711-001 | Harness, Low Voltage Ignition | 1 |

* Not Illustrated

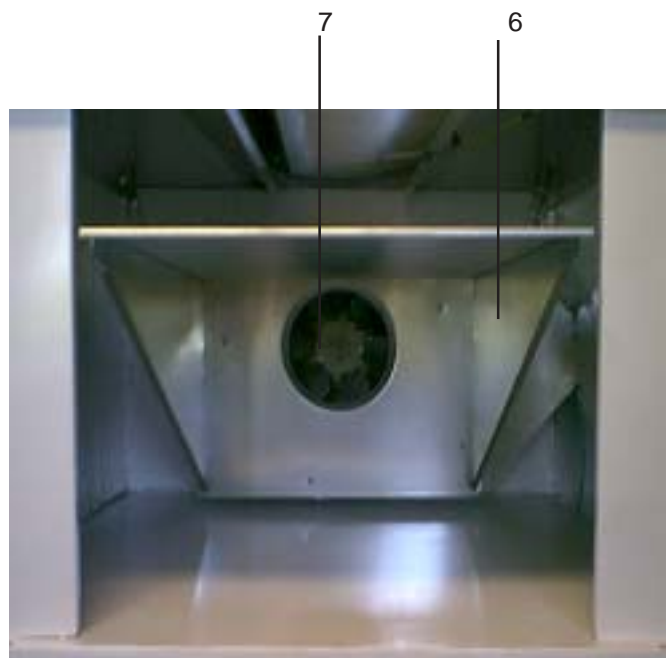
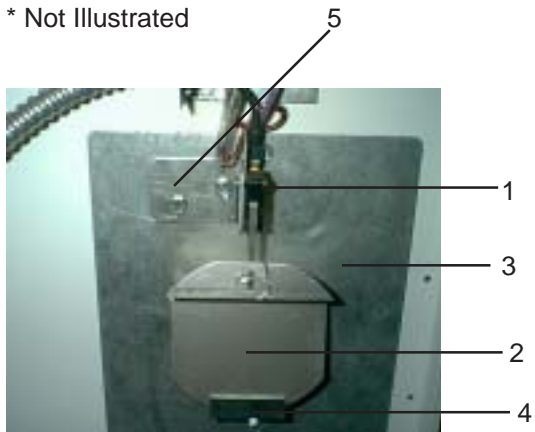




Air Flow Switch, Lint Hood, & Blower Impeller Group

| Key | Part Number | Description | Qty. |
|-----|--------------|--|------|
| 1 | 9539-461-009 | Switch, Air Flow | 1 |
| * | 9545-020-001 | Screw, Hx #4-40 x 5/8 | 2 |
| * | 8640-401-001 | Nut, Special Twin #4-40 | 1 |
| 2 | 9008-007-001 | Actuator-Switch, Air Flow | 1 |
| * | 9451-169-002 | Pin, Cotter | 1 |
| 3 | 9074-283-001 | Plate, Cover | 1 |
| 4 | 9029-046-001 | Actuator Stop | 1 |
| 5 | 9029-100-001 | Bracket, Switch | 1 |
| * | 9545-008-001 | Screw 10B x 1/4 | 4 |
| * | 9039-575-000 | Bracket, Conduit | 1 |
| 6 | 9834-009-001 | Hood Ass'y, Lint | 1 |
| * | 8640-412-004 | Nut, Whizlock | 6 |
| * | 9822-031-002 | Lint Screen 34" length | 1 |
| 7 | 9278-037-003 | Impeller, w/set screws | 1 |
| * | 9074-275-002 | Cover-Half, Blower Impeller (Flat) | 1 |
| * | 9074-275-003 | Cover-Half, Blower Impeller (Formed) | 1 |
| * | 9545-008-001 | Screw, Hex #10Bx1/4 | 4 |
| 8 | 9576-207-006 | Thermostat, Safety | 1 |
| 9 | 9825-057-002 | Cover, Safety Thermostat..... | 1 |
| * | 9545-008-001 | Screw 10B x 1/4 | 2 |
| * | 9345-981-001 | Schematic Wiring | 1 |
| * | 9345-982-001 | Diagram Wiring | 1 |

* Not Illustrated



DRIVE GROUP

| Key | Part Number | Description | Qty. |
|-----|--------------|--|------|
| 1 | 9376-299-002 | Motor, Drive | 1 |
| * | 9545-014-004 | Screw, Hx 5/16-18 x 5/8" | 4 |
| * | 8640-400-003 | Nut 5/16-18 | 4 |
| 2 | 9453-157-001 | Pulley, Motor | 1 |
| * | 9545-028-013 | Screw, Set | 2 |
| 3 | 9991-054-002 | Support Ass'y, Motor | 1 |
| 4 | 9545-029-005 | Screw 3/8-16 x 1" | 4 |
| 4 | 8640-415-004 | Nut 3/8-16 | 4 |
| 5 | 9991-053-001 | Support Assy, Intermed. Pulley | 1 |
| 6 | 9545-029-010 | Bolt, Rd Hd, 3/8-16 x 1 1/4" | 3 |
| 7 | 9545-029-003 | Screw, 3/8-16 x 1 1/2" | 1 |
| 8 | 8640-415-004 | Nut 3/8-16 | 3 |
| * | 8641-581-035 | Washer, Flat | 4 |
| 9 | 9861-024-003 | Arm Assy-Tension | 1 |
| * | 8641-581-035 | Washer, Flat | 1 |
| * | 9487-200-006 | Ring-Retaining | 1 |
| 10 | 9908-042-006 | Pulley Assy, Intermediate - w/bearings | 1 |
| 11 | 9036-159-007 | Bearing, Ball-Idler Pulley | 2 |
| * | 9538-173-002 | Spacer, Bearing | 1 |
| 12 | 9908-043-002 | Pulley Driven | 1 |
| * | 9487-234-001 | Ring, Tolerance | 1 |
| 13 | 8641-581-026 | Washer, Flat | 1 |
| 13 | 8641-582-016 | Lockwasher | 1 |
| 13 | 9545-017-009 | Screw, Hx Cap | 1 |
| 14 | 9040-077-004 | Belt, Final Drive | 1 |
| 15 | 9040-077-003 | Belt, Motor Drive | 1 |
| 16 | 9534-151-000 | Spring, Belt Tension | 1 |
| 17 | 9099-012-002 | Chain, Spring Tension | 1 |
| 18 | 9248-022-002 | Hook, Tension | 1 |
| * | 9208-050-001 | Guard, Drive | 1 |
| 19 | 9454-685-001 | Panel, Drive Guard, RH | 1 |
| 20 | 9454-686-001 | Panel, Drive Guard, LH | 1 |
| 21 | 9550-175-001 | Shield, Motor | 1 |
| * | 9545-008-003 | Screw | 2 |
| 22 | 9545-008-024 | Screw (to attach guards above) | 30 |

* Not Illustrated

