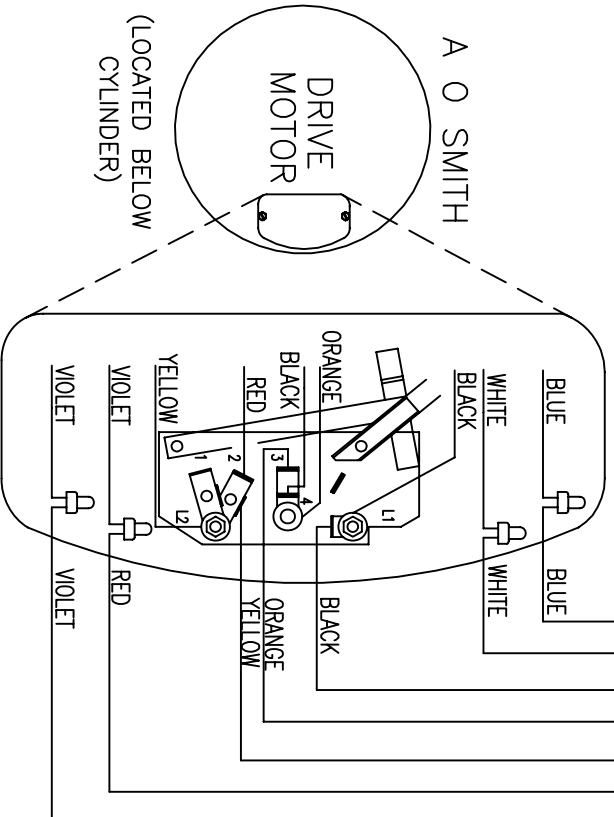
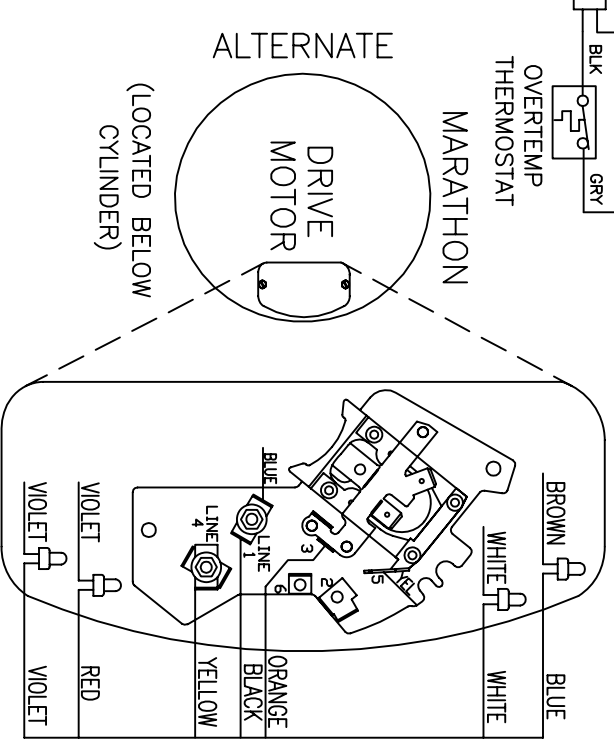
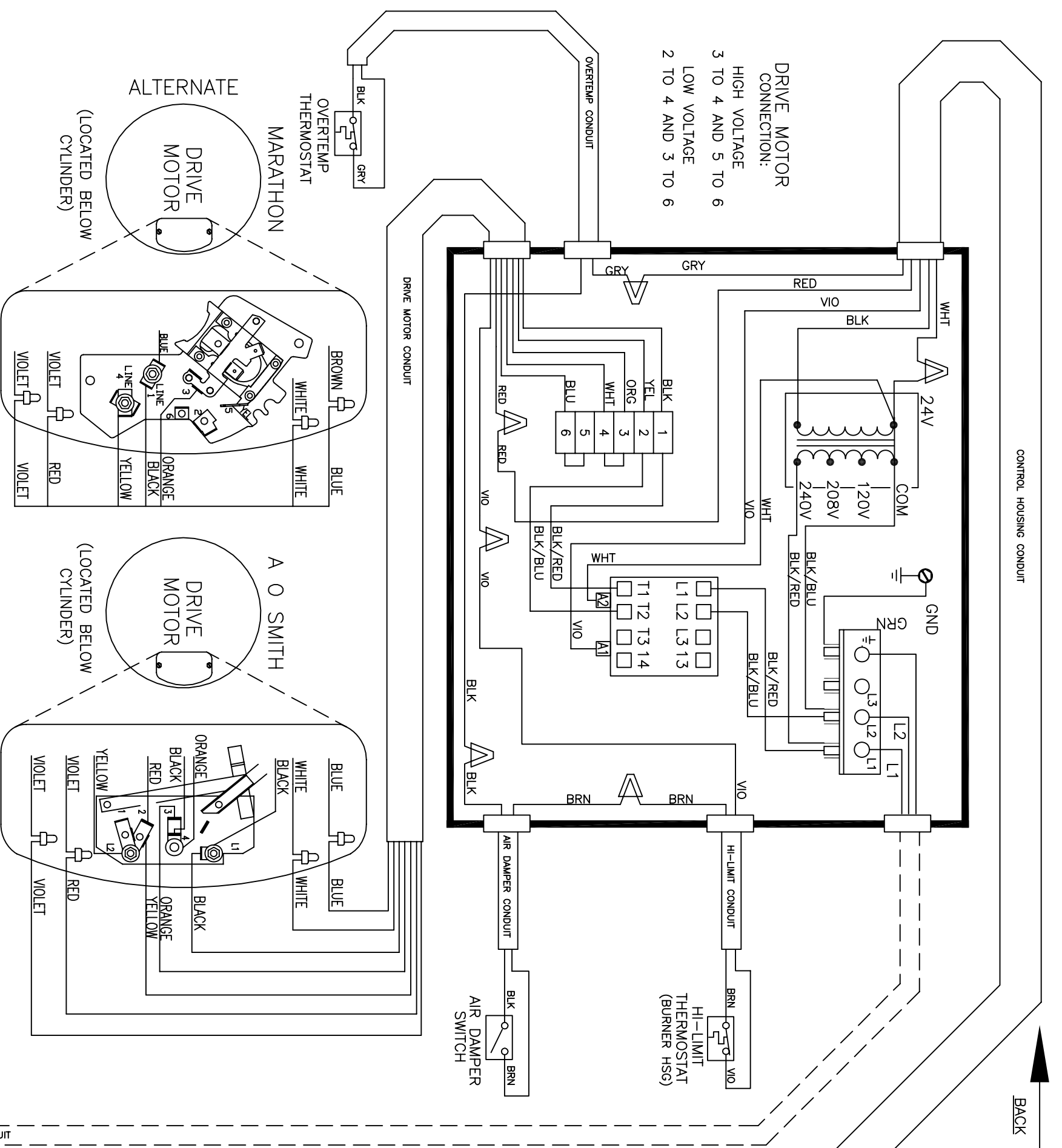


DRIVE MOTOR CONNECTION:
 HIGH VOLTAGE
 3 TO 4 AND 5 TO 6
 LOW VOLTAGE
 2 TO 4 AND 3 TO 6



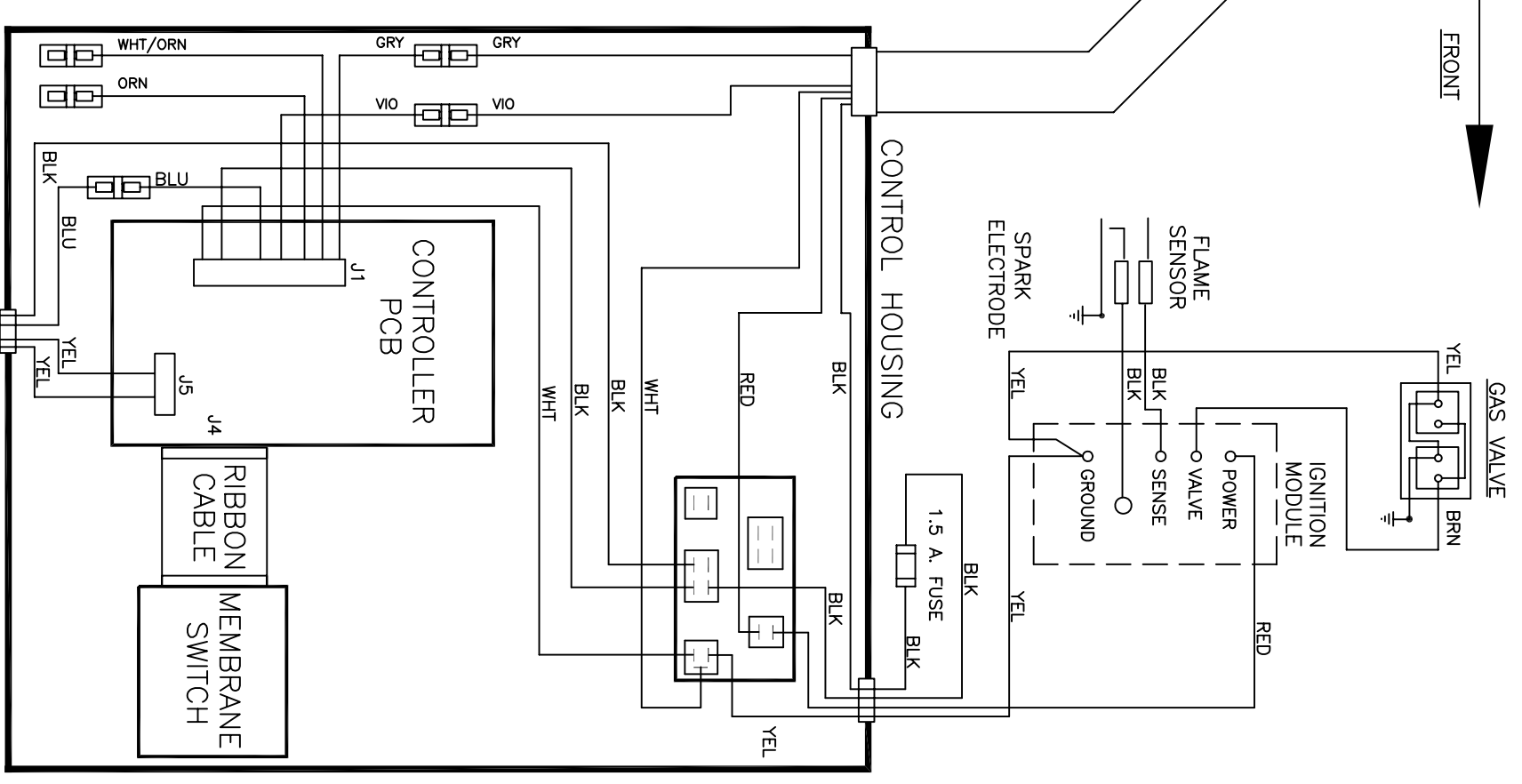
BEFORE CONNECTING TO POWER READ THIS NOTE.

IN CONTROL ENCLOSURE ON THE BACK OF MACHINE: SELECT TRANSFORMER TAP AND MOTOR CONNECTIONS TO MATCH THE LINE VOLTAGE.

NOTE: CENTRIFUGAL SWITCHES—CONTACT CHANGES POSITION WHEN MOTOR IS UP TO SPEED.

RUN SAFETY GROUND FROM CABINET TO APPROVED EXTERNAL GROUND.

208-240 V OR 110-125 V
 60 HZ, 1 PHASE



WIRING DIAGRAM
 DCTD80HC--15
 DCWD80HC--15
 DTCH80

9345-890-001G