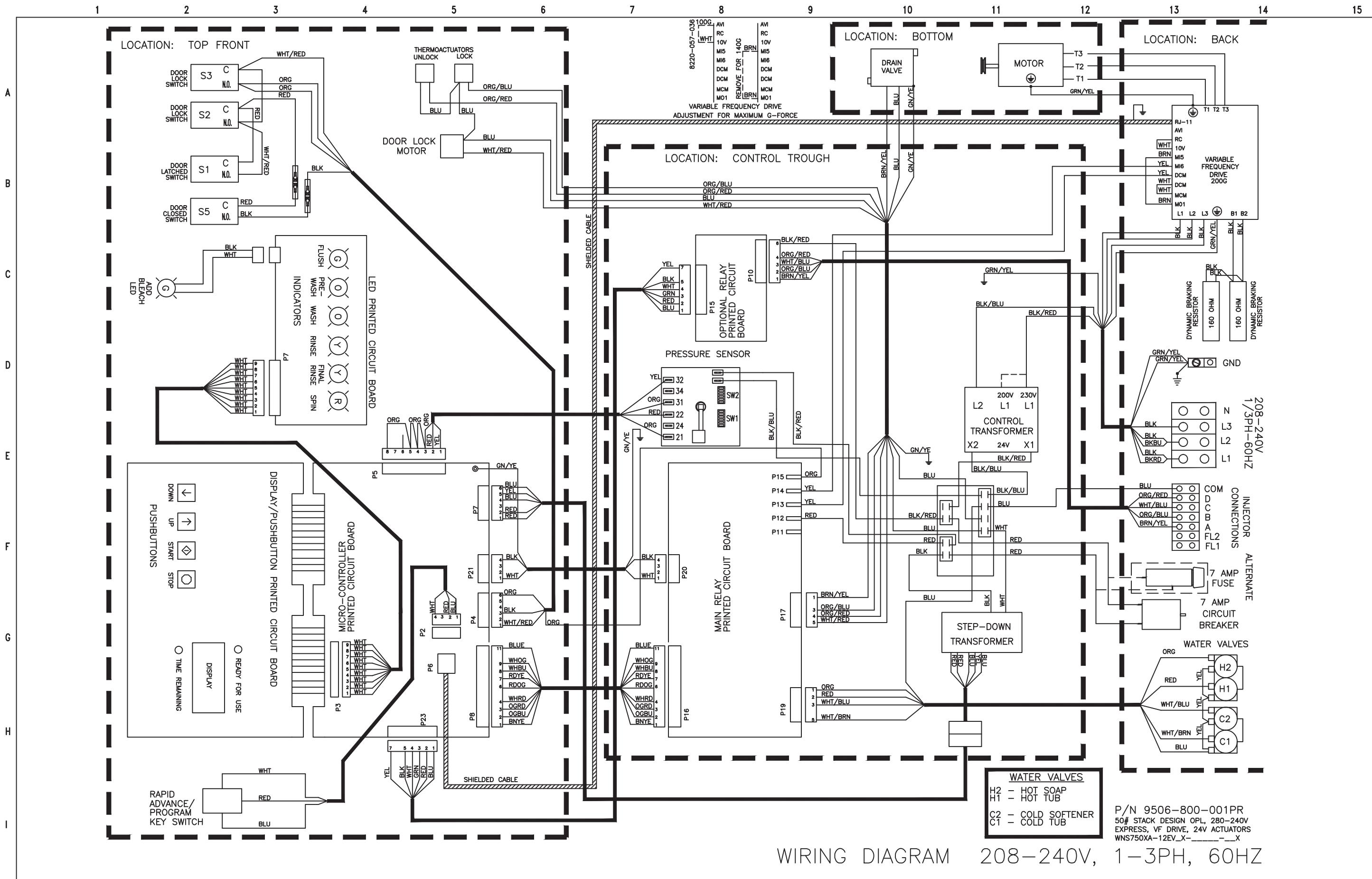


**WATER VALVES**  
 H2 - HOT SOAP  
 H1 - HOT TUB  
 C2 - COLD SOFTENER  
 C1 - COLD TUB

SCHMATIC 208-240V, 1-3PH, 60HZ

P/N 9506-800-001PR  
 50# STACK DESIGN OPL, 208-240V  
 EXPRESS, VF DRIVE, 24V ACTUATORS  
 WNS750XA-12EV\_X-\_-\_-\_-X



WIRING DIAGRAM 208-240V, 1-3PH, 60HZ