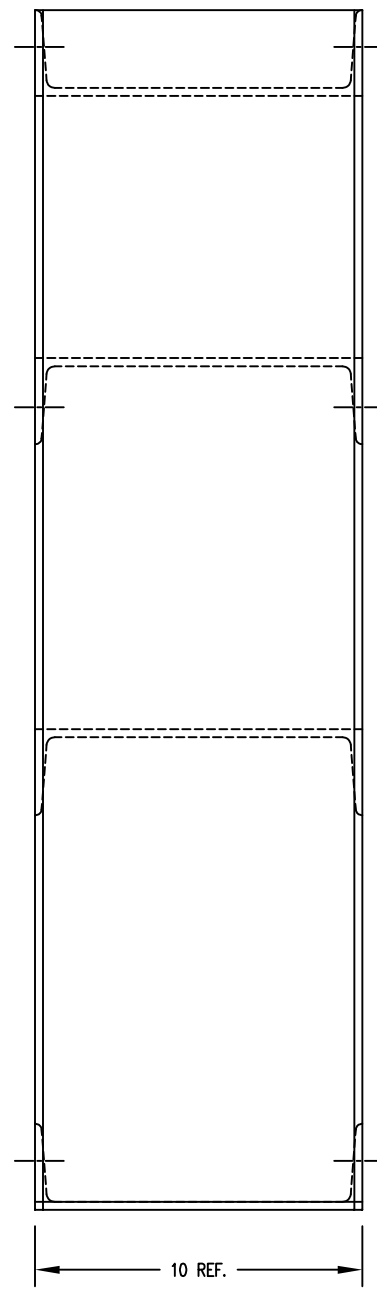
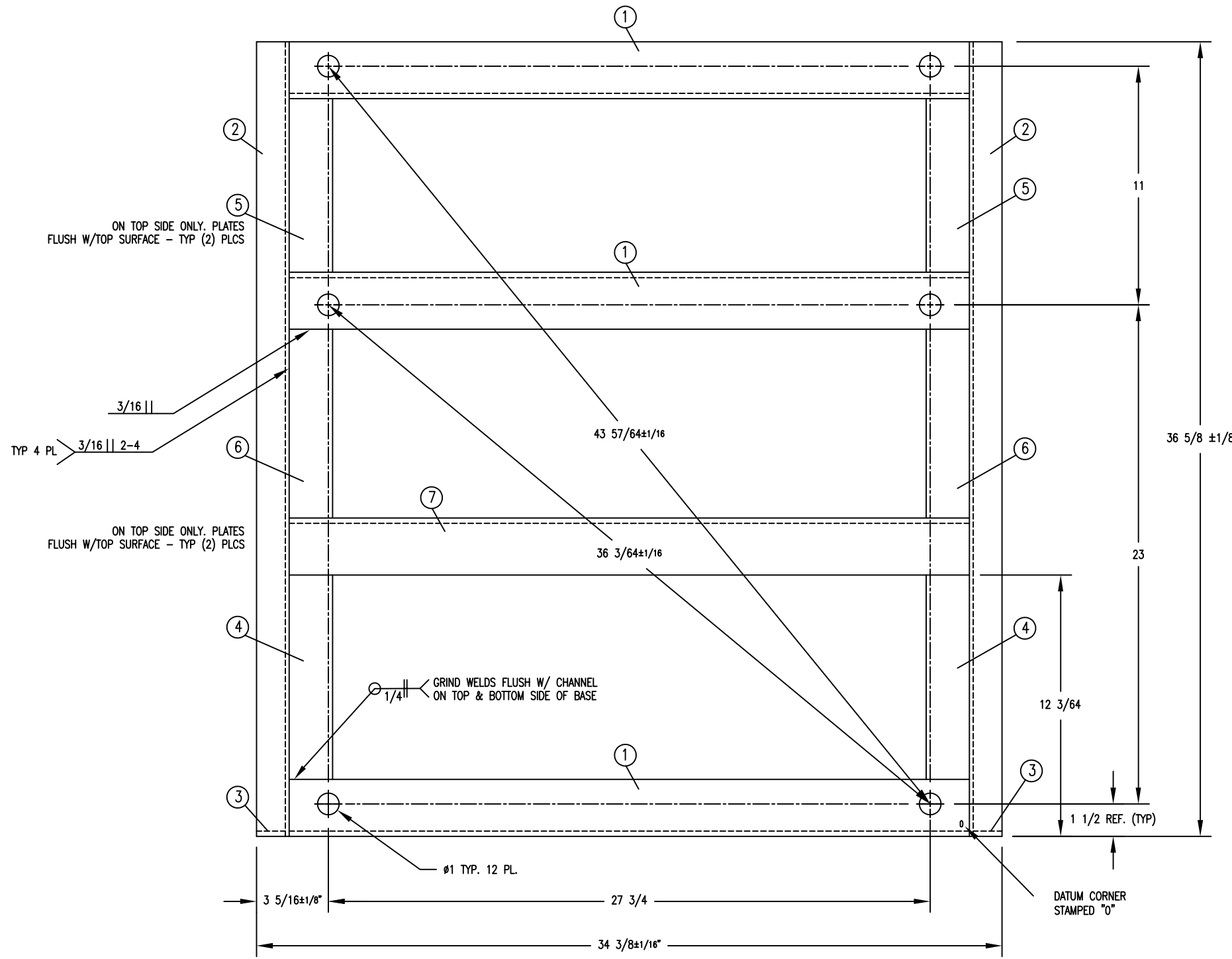


A
B
C
D
E
F
G
H
I
J
K
L
M



REV	REVISIONS	APP	DATE
PR	RELEASE FOR PRODUCTION: P/N 9945-102-001. ECN 13532	AMM	5/26/95
A	MOVED (A) 3/16 X 2 STRIPS TO TOP SIDE. ADDED WELD STRIPS FOR NEW PIECES. ECN 14877	RM	2/20/97
B	REV SIDE CHANNELS WERE C10 X 15.3# HR STEEL CHANNELS TURNED OUT. FILLER PL ADDED TO RE OF SIDS. REMOVED (A) 1/4 X 2 1/4 ANGLE BR. GUSSETS FROM REAR CHANNELS. ADDED (A) 3/16 X 2 STRIPS TO TOP SIDE. BASE WIDTH WAS 34 3/4. ECN 18468	RM	9/13/01
C	CHGD PRIMER FROM GRAY TO BLACK IN TITLE BLOCK. ECN 001284	TWH	1/10/12
D	ADD PARTS LIST @ M-7. CORRECTED IT #2. "MC10X8.4" WAS "C10 X 8.4". ECN 002584	SC	06/01/15
E	ADD ITEMS 6 & 7 TO PARTS LIST @ M-7. ADD CHANNEL @ G-4. CHG LENGTH OF ITEM 4 TO 9.37" FROM 20.69". ECN 004375	CM	12/5/19

QTY	PART NO.	ITEM	DESCRIPTION
1		7	C10 X 15.3#/FT. STEEL CHANNEL @ 31.38"
4		6	2" X 3/16" HR STEEL FLATBAR @ 8.64"
4		5	2" X 3/16" HR STEEL FLATBAR @ 7.94"
4		4	2" X 3/16" HR STEEL FLATBAR @ 9.37"
2		3	1/4" X 1 1/4" HR STEEL FLATBAR @ 9.63"
2		2	MC10 X 8.4#/FT. STEEL CHANNEL @ 36.63"
3		1	C10 X 15.3#/FT. STEEL CHANNEL @ 31.38"
BASE ASSY-FRAME, 1 PLACE			

9945-102-001			
PART NO.		ITEM	DESCRIPTION
DEXTER LAUNDRY, INC.			
FAIRFIELD, IOWA			
NAME BASE-ASS'Y-1 PLACE, 10"			
MATERIAL			USED ON WGNSS COMM. WSHR.
FINISH 1 COAT BLACK PRIMER			REFERENCE WAS XLF-1995
SPECS.			
DISTRIBUTION	DRAWN R.MACK DATE 5/16/95 SCALE 1/4	CHECKED	APP. DWG. NO. 9945-102