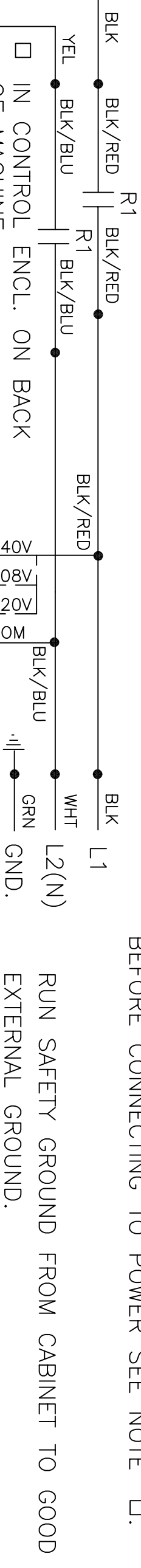
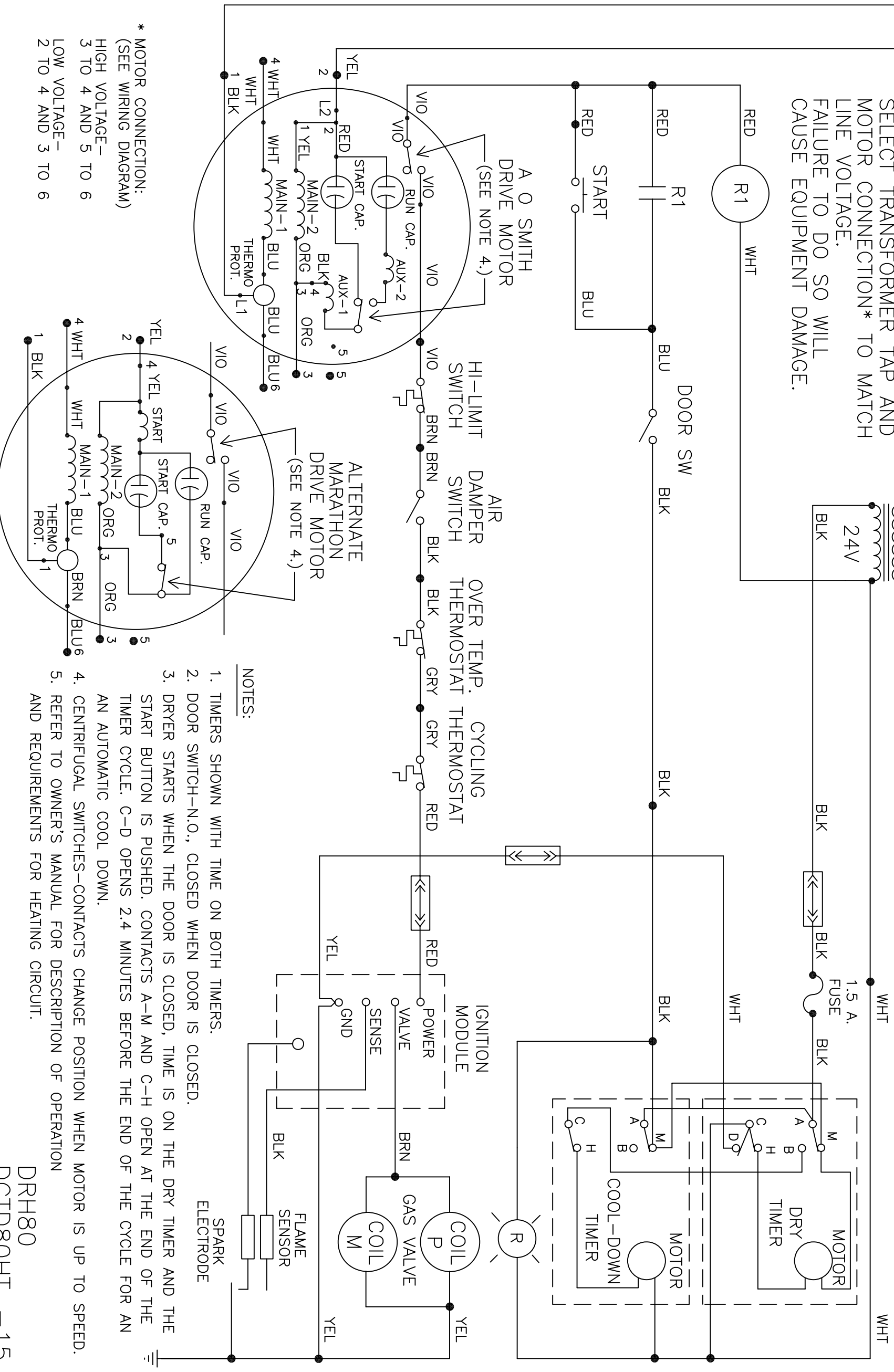


BEFORE CONNECTING TO POWER SEE NOTE □.



□ IN CONTROL ENCL. ON BACK OF MACHINE:
 SELECT TRANSFORMER TAP AND MOTOR CONNECTION* TO MATCH LINE VOLTAGE.
 FAILURE TO DO SO WILL CAUSE EQUIPMENT DAMAGE.



NOTES:

1. TIMERS SHOWN WITH TIME ON BOTH TIMERS.
2. DOOR SWITCH—N.O., CLOSED WHEN DOOR IS CLOSED.
3. DRYER STARTS WHEN THE DOOR IS CLOSED, TIME IS ON THE DRY TIMER AND THE START BUTTON IS PUSHED. CONTACTS A-M AND C-H OPEN AT THE END OF THE TIMER CYCLE. C-D OPENS 2.4 MINUTES BEFORE THE END OF THE CYCLE FOR AN AN AUTOMATIC COOL DOWN.
4. CENTRIFUGAL SWITCHES—CONTACTS CHANGE POSITION WHEN MOTOR IS UP TO SPEED.
5. REFER TO OWNER'S MANUAL FOR DESCRIPTION OF OPERATION AND REQUIREMENTS FOR HEATING CIRCUIT.

* MOTOR CONNECTION:
 (SEE WIRING DIAGRAM)

- HIGH VOLTAGE—
 3 TO 4 AND 5 TO 6
- LOW VOLTAGE—
 2 TO 4 AND 3 TO 6

9345—824—008K

SCHEMATIC

DRH80
 DCTD80HT_—15
 DCWD80HT_—15