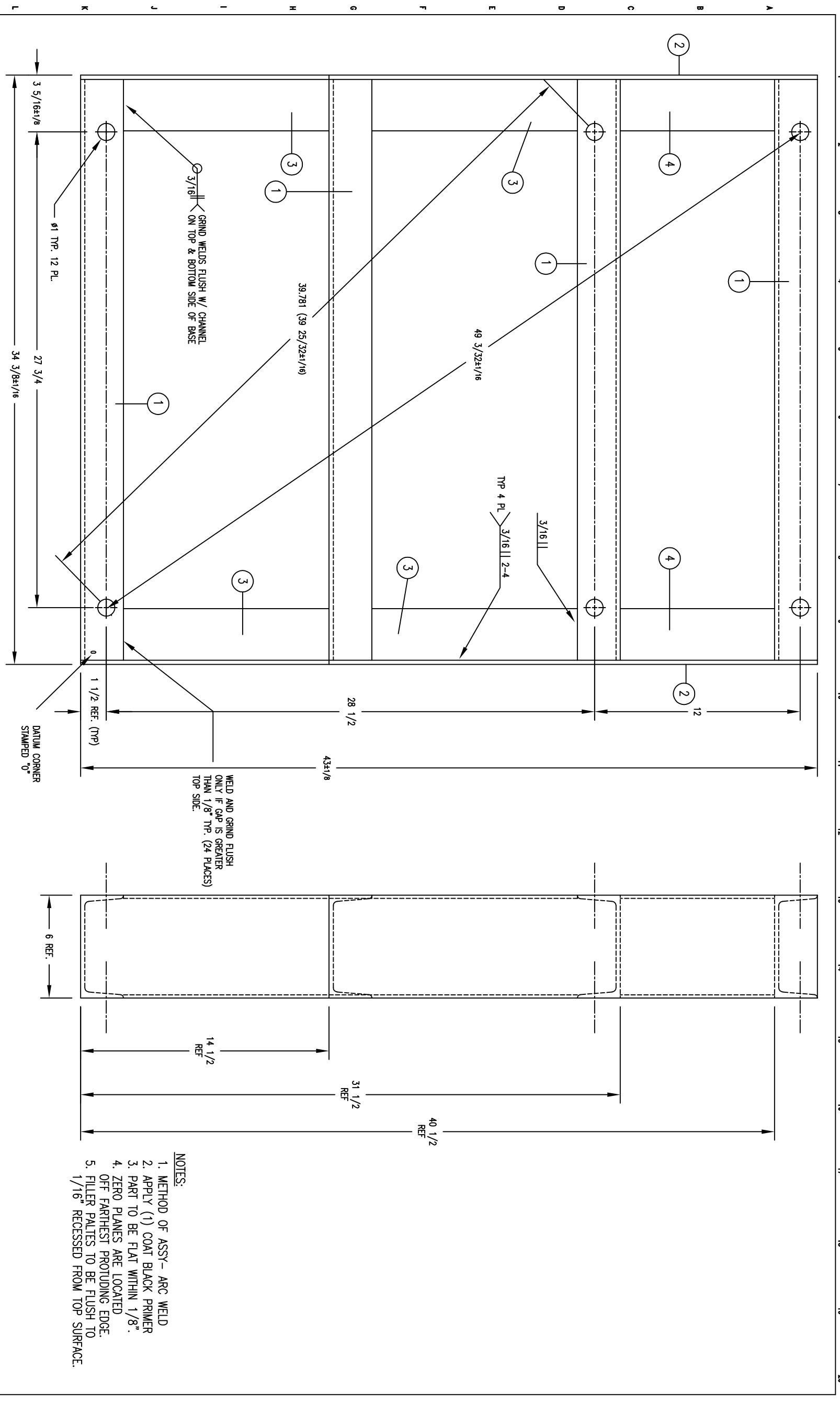


REV	REVISIONS	APP
PR	REL FOR PROD: 9945-124-001. ECN 19969	AMM
A	UPDATED VIEWS TO SHOW WELD REQ'S. REVISED NOTES AND MOVED PARTS LIST UNDER TOP VIEWS. ECN 000032	KJL
B	RMD DEC DIMS 49.094 @ E-4, 39.781 @ H-4, 28.5 @ G-10, 43 @ G-11, 3.313 @ L-1, 27.75 @ L-5, 34.375 @ L-5, 1.5 @ K-10, 14.5 @ I-15, 31.828 @ G-16 & 40.828 @ F-16. CHG GRAY PRIMER TO BLACK @ J-18. ECN 001284	TWH
C	CORRECT IT #1 "M6X12" WAS "M6X12" & IT #3 3/16" WAS 9/16". ECN 002584	SC
D	CORRECTED DIMS IN SIDE VIEW: 31 1/2 WAS 31 53/64, 40 1/2 WAS 40 53/64. ECN 003889	SC

QTY	PART NO.	ITEM	DESCRIPTION
4		4	SHORT FILLER LH/RH
8		3	FILLER TOP & BOT LH/RH
2		2	FILLER PLATE LH/RH
4		1	CHANNEL FE/MID/RR

BASE ASSY-FRAME, 1 PLACE



- NOTES:
1. METHOD OF ASSY - ARC WELD
 2. APPLY (1) COAT BLACK PRIMER
 3. PART TO BE FLAT WITHIN 1/8".
 4. ZERO PLANES ARE LOCATED OFF FARTHEST PROTRUDING EDGE.
 5. FILLER PLATES TO BE FLUSH TO 1/16" RECESSED FROM TOP SURFACE.

9945-124-001	BASE ASSY-FRAME, 1 PL (6")
PART NO.	DESCRIPTION
DEXTER LAUNDRY, INC. FAIRFIELD, IOWA	
NAME	BASE ASSY-FRAME, 1 PL (6")
MATERIAL	
FINISH	1 COAT BLACK PRIMER
SPECS.	
DATE 02/23/03	SCALE 1/4
DRAWN R/JACK	CHECKED
DATE 02/23/03	SCALE 1/4
APPROVED	DWG. NO. 9945-124
USED ON	REFERENCE
COM. WSR	WAS
XF-2336	