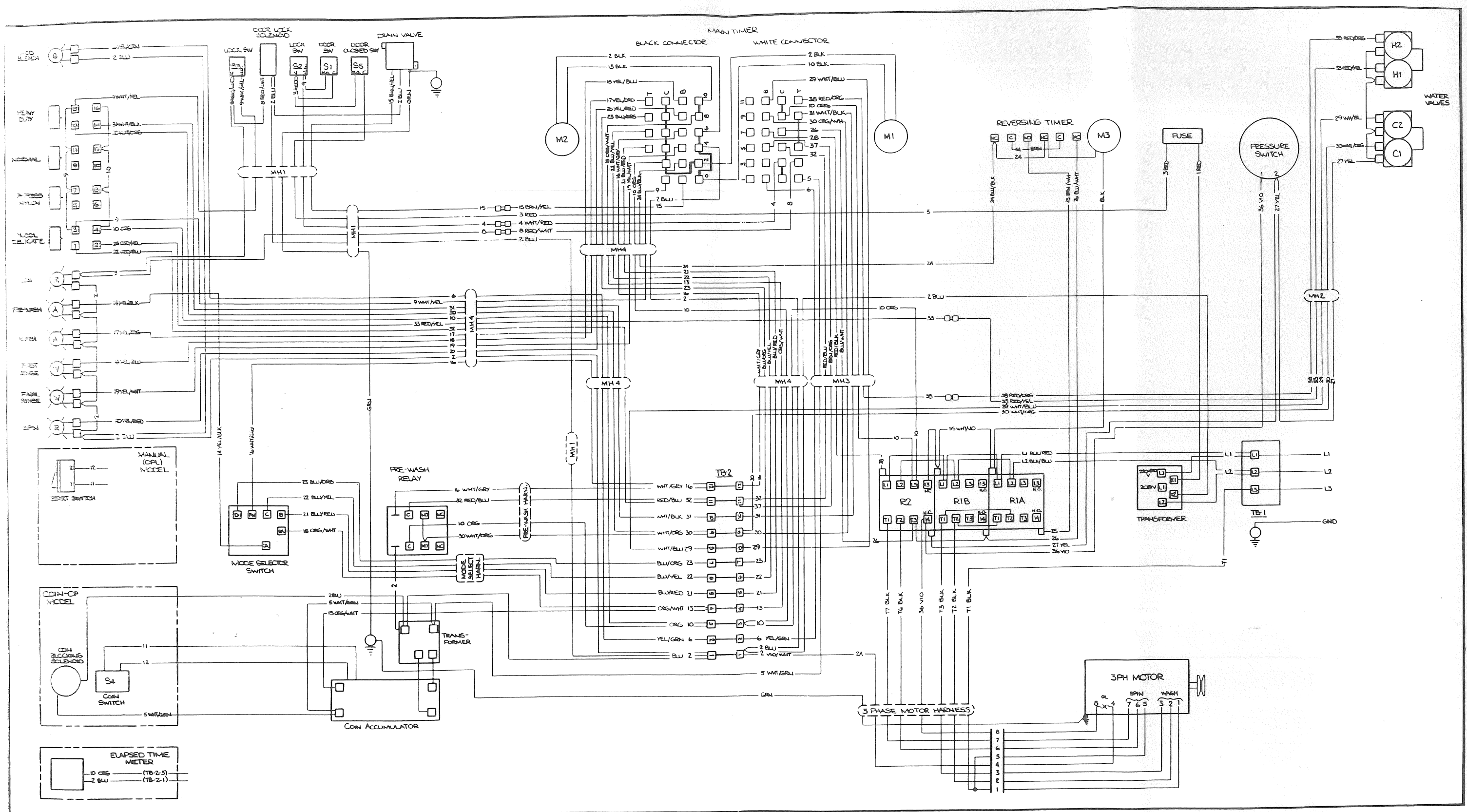


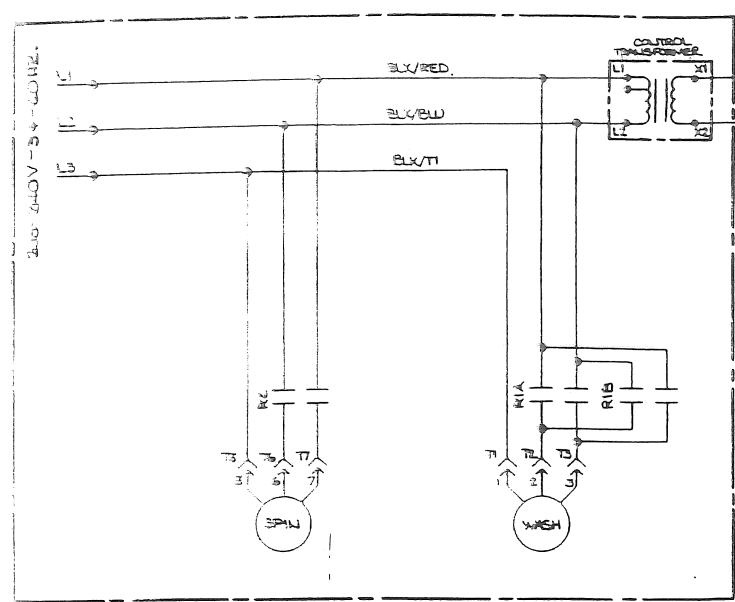
Machine that has coin blocking and Elmo motor  
 Thoroughbred 400  
 Model #WCEA4K

WIRING LABEL - DIAGRAM, 1 PHASE MOTOR

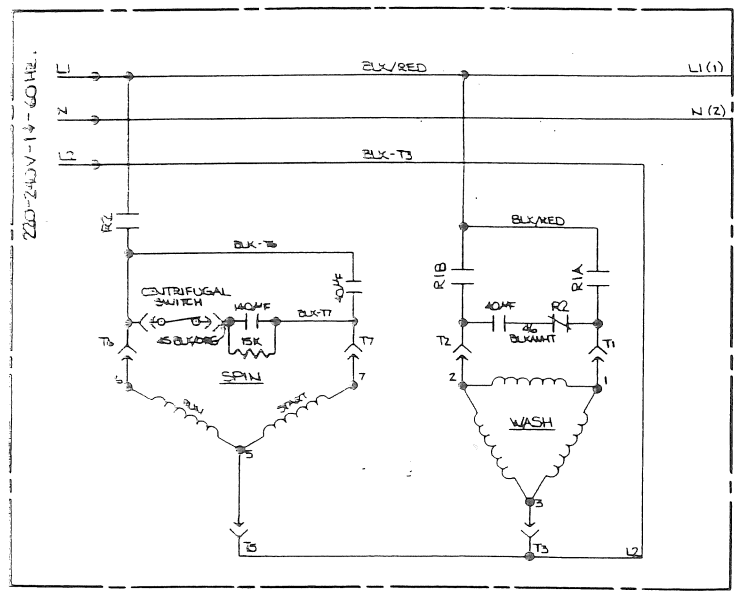


Machine that has coin blocking and Elmo motor  
 Thoroughbred 400.  
 Model #WCEB4K

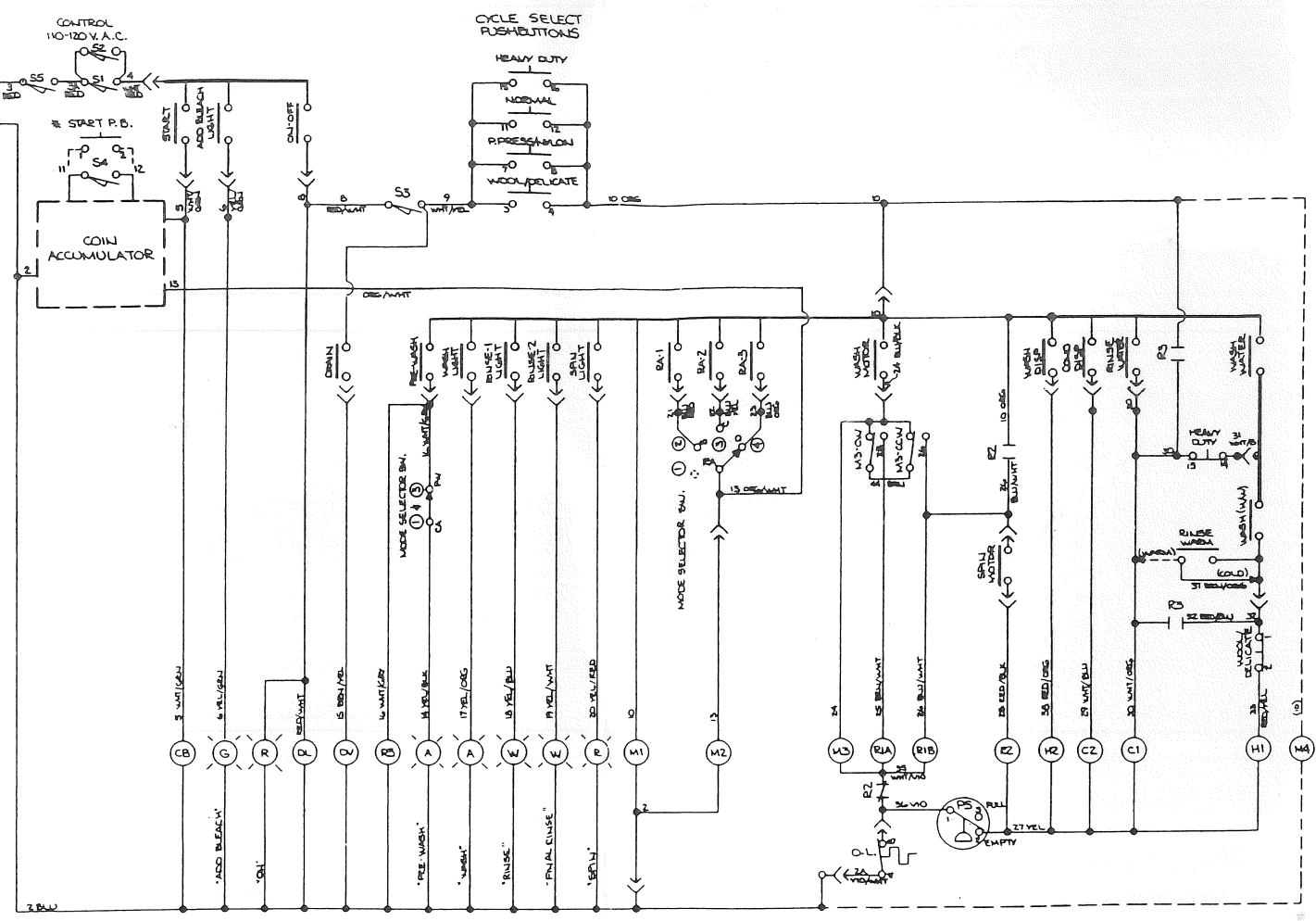
WIRING LABEL - DIAGRAM, 3 PHASE MOTOR



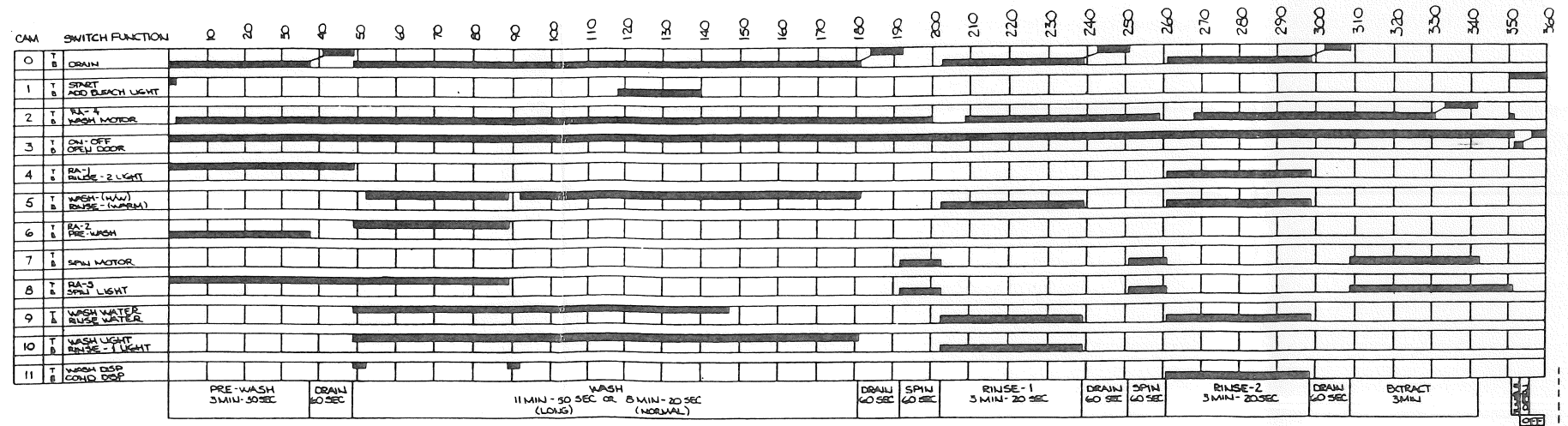
3-PHASE MOTOR CONNECTION



1-PHASE MOTOR CONNECTION



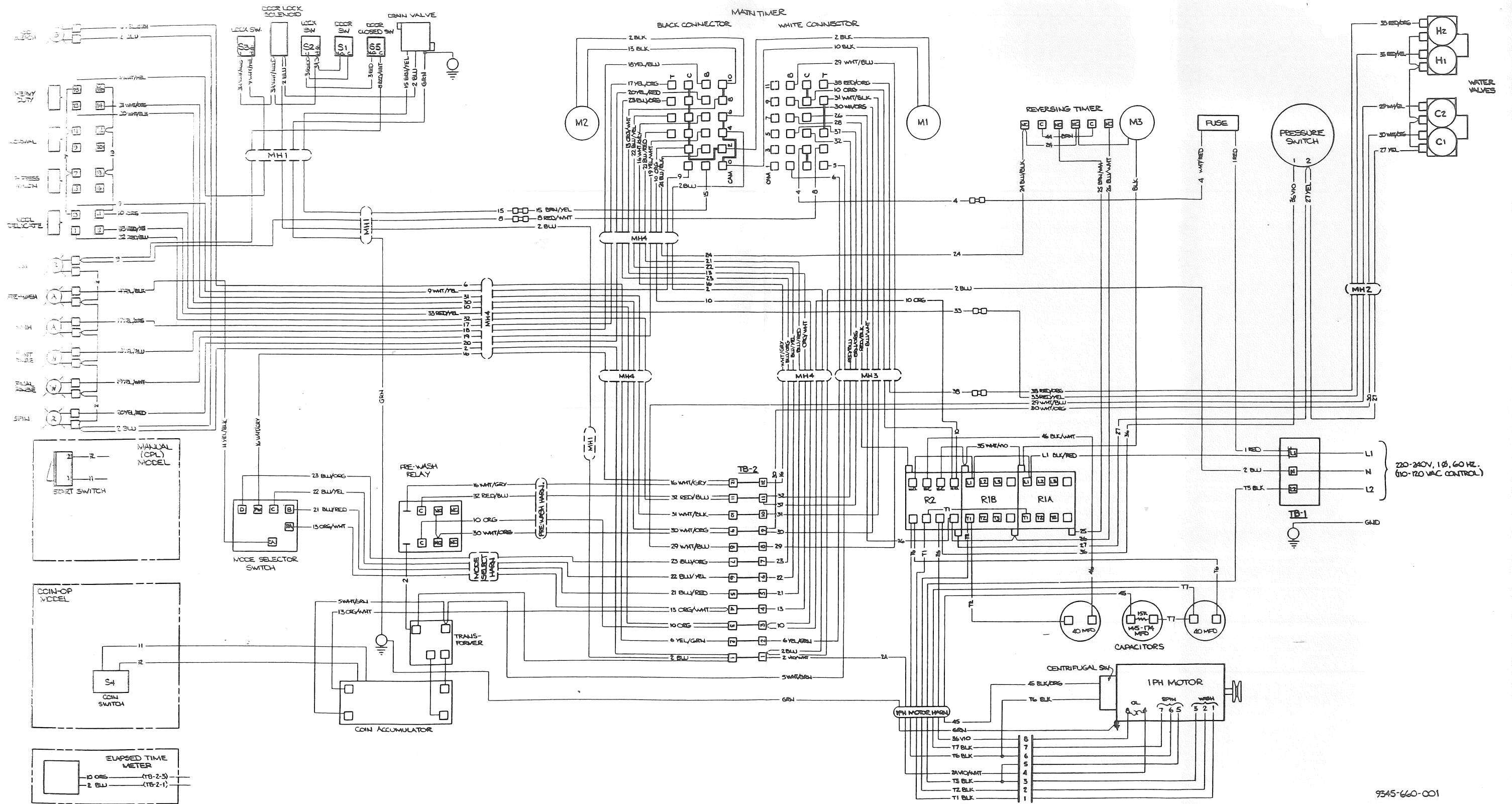
- LEGEND**
- CB - COIN BLOCKING SOLENOID
  - C1 - COLD WATER VALVE SOLENOID (TUB)
  - C2 - COLD WATER VALVE SOLENOID (CONDITIONER DISPENSER)
  - DL - DOOR LOCK SOLENOID
  - DV - DRAIN VALVE
  - H1 - HOT WATER VALVE SOLENOID (TUB)
  - H2 - HOT WATER VALVE SOLENOID (WASH DISPENSER)
  - M1 - MAIN TIMER MOTOR
  - M2 - RAPID ADVANCE TIMER MOTOR
  - M3 - REVERSING TIMER MOTOR
  - M4 - ELAPSED TIME METER (OPTIONAL)
  - PS - PRESSURE SWITCH
  - R1A - WASH MOTOR CONTACTOR (CW)
  - R1B - WASH MOTOR CONTACTOR (CCW)
  - R2 - SPIN MOTOR CONTACTOR (CCW)
  - R3 - PRE-WASH RELAY
  - S1 - DOOR SWITCH (DOOR LATCHED)
  - S2 - LOCK SWITCH (DOOR LOCKED)
  - S3 - LOCK SWITCH (DOOR CLOSED)
  - S4 - COIN SWITCH (DETECTS COIN)
  - S5 - DOOR SWITCH (DOOR CLOSED)
  - MT - MAIN TIMER CONTACT
  - - PUSHBUTTON CONTACT
  - - MODE SELECTOR SWITCH (SEE BELOW)
  - - INTERNAL TIMER CONNECTION
  - - INDICATOR LIGHT
  - # - MANUAL MODEL ONLY
  - # - COIN-OP MODEL ONLY
- MODE SELECTOR SWITCH**
- ① - PRE-WASH + LONG WASH
  - ② - LONG WASH
  - ③ - PRE-WASH + NORMAL WASH
  - ④ - NORMAL WASH



RAPID ADVANCE FOR APPROX 10" AT START OF CYCLE.

Machine that has coin blocking and Elmo motor  
Thoroughbred 400

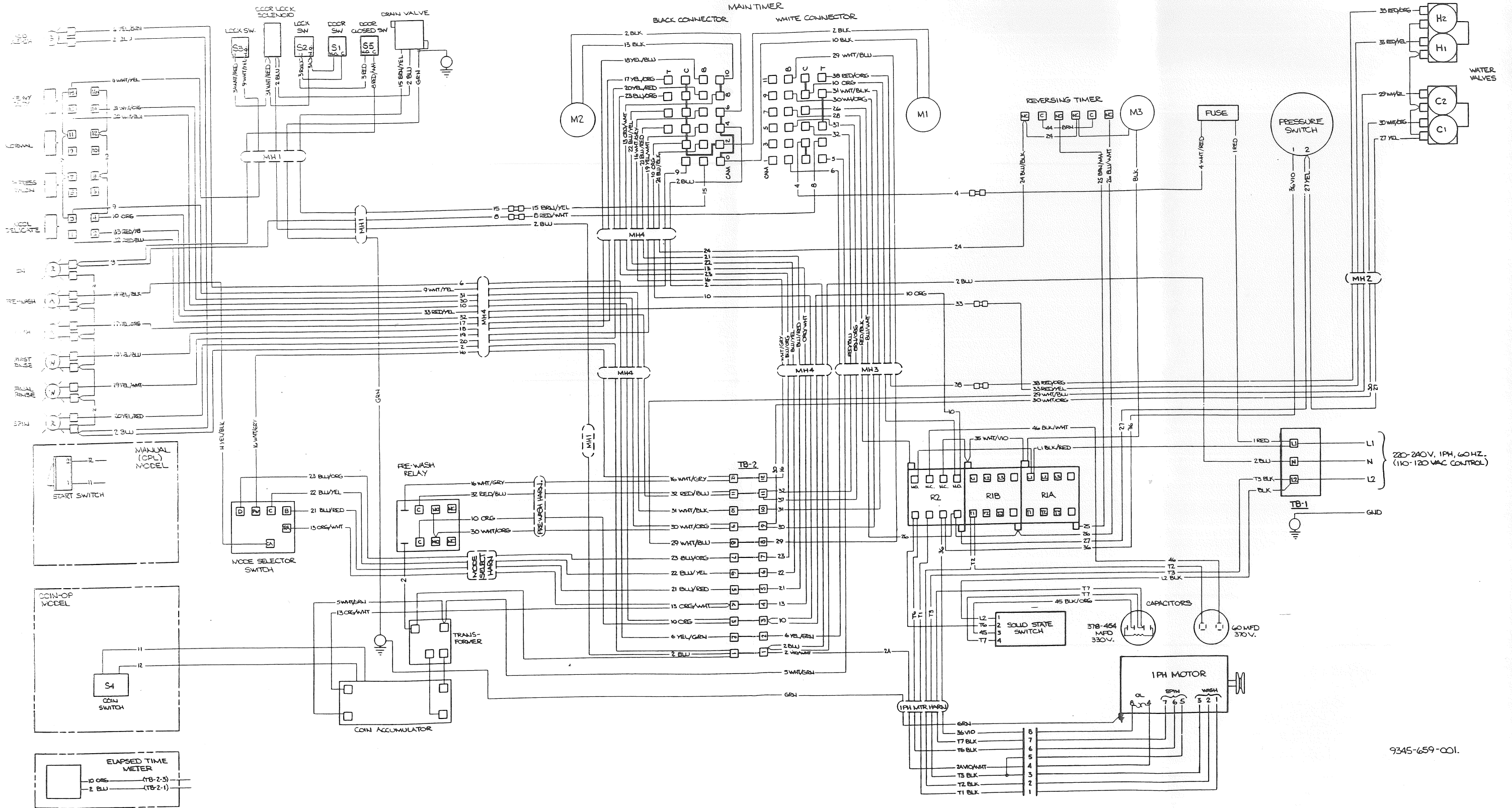
WIRING LABEL - SCHEMATIC DIAGRAM



Machine without coin blocking and with Elmo motor  
 Thoroughbred 400  
 Model WCEA4K

# WIRING LABEL - DIAGRAM, 1 PH. MOTOR, 60 HZ.

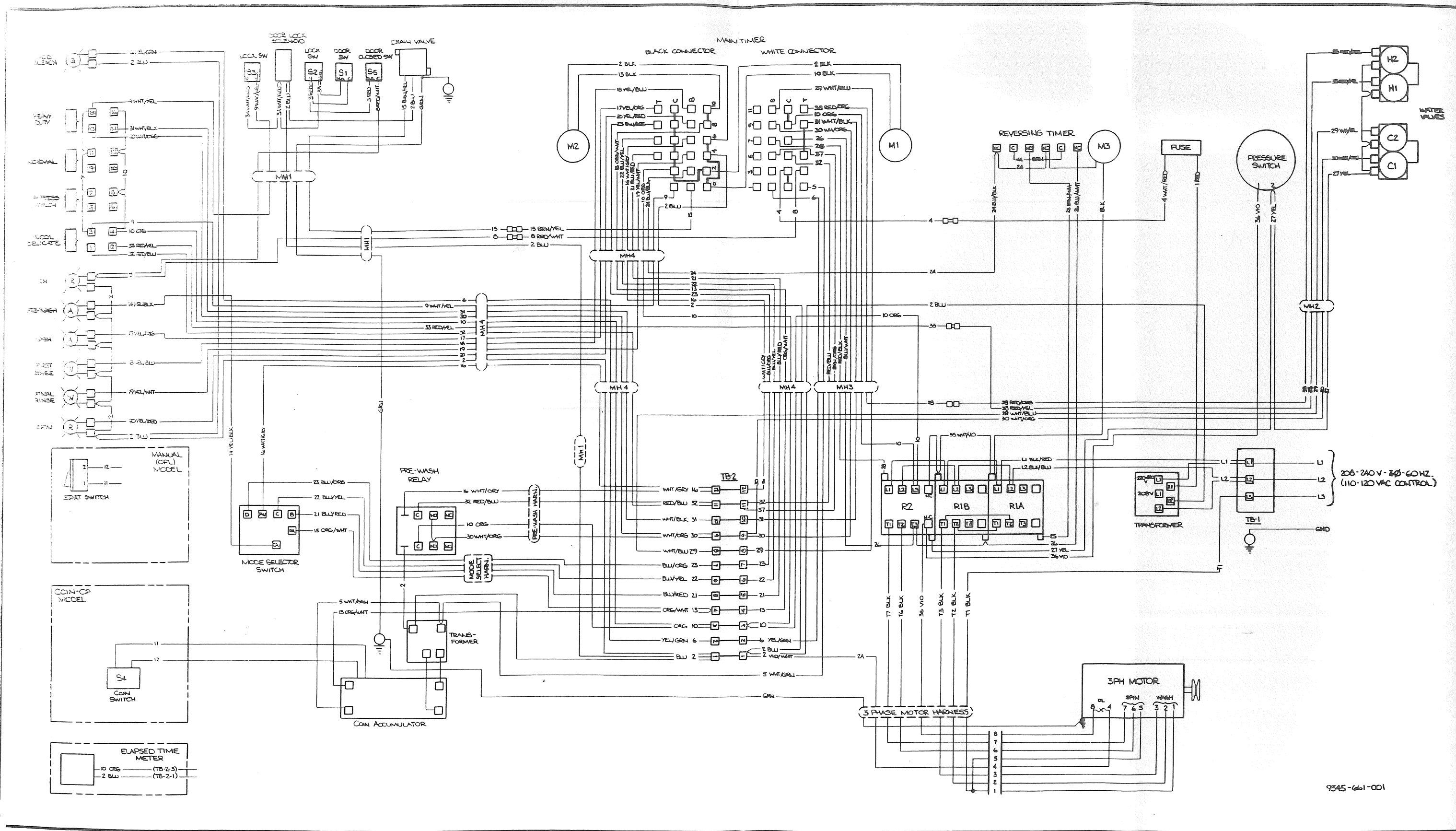
9545-660-001



Machine without coin blocking and with Century motor  
 Thoroughbred 400  
 Model WCEA4K

# WIRING LABEL - DIAGRAM, 1 PH. MOTOR, 60 HZ.

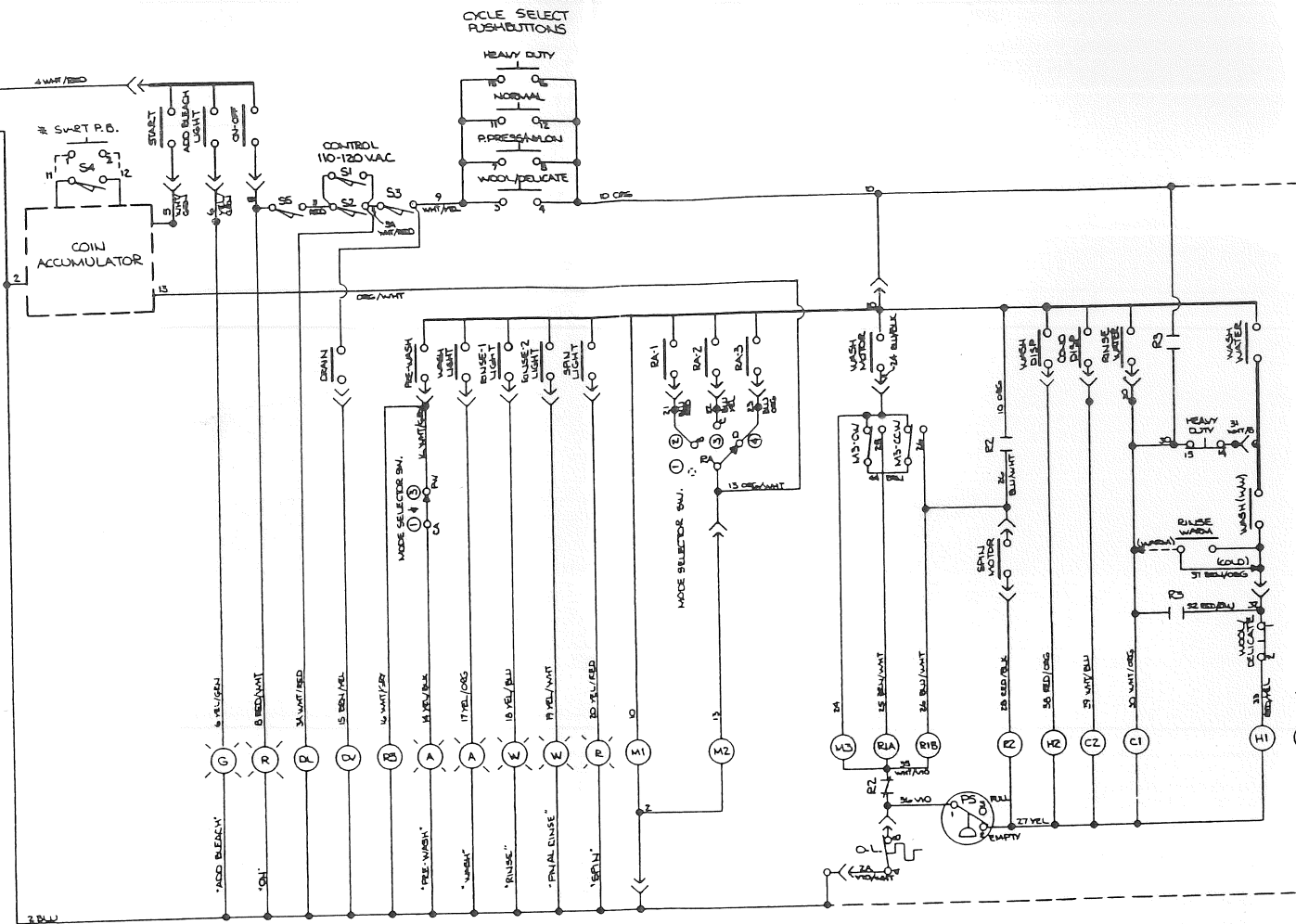
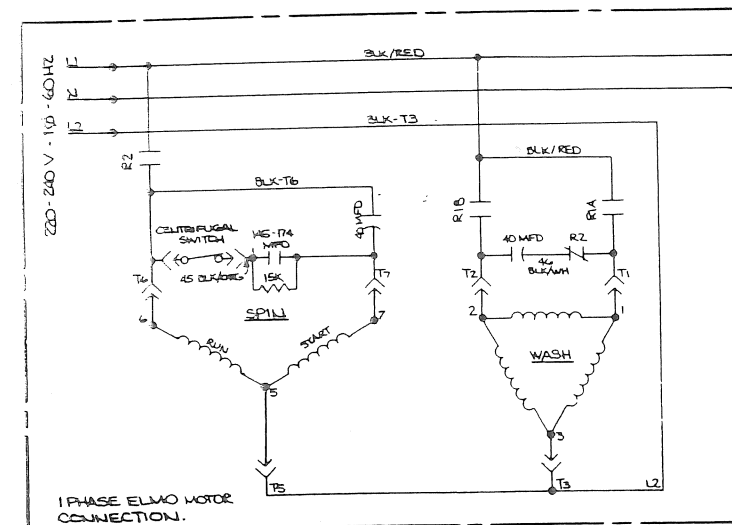
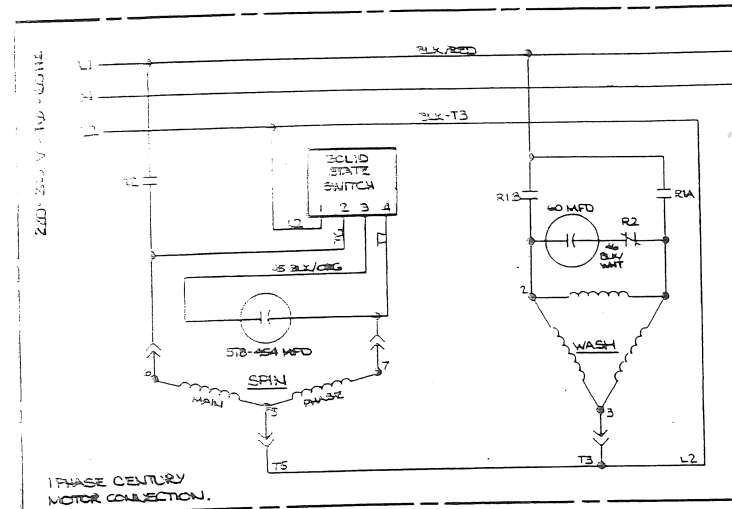
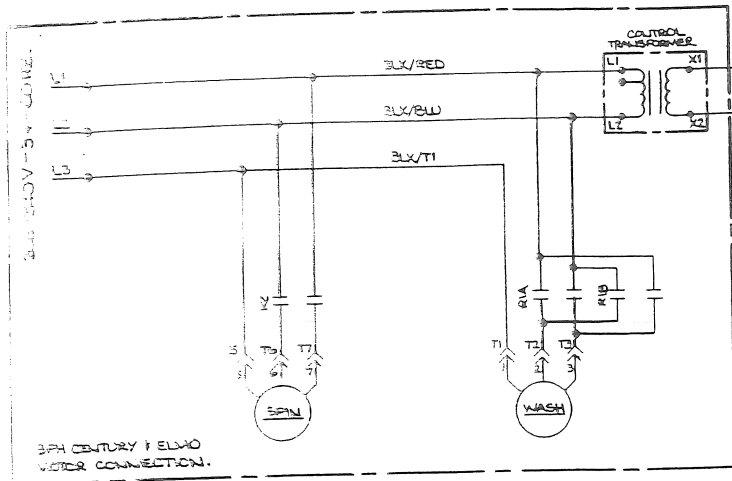
9345-659-001.



9345-661-001

Machine without coin blocking and with Elmo or Century motor  
 Thoroughbred 400  
 Model WCEB4K

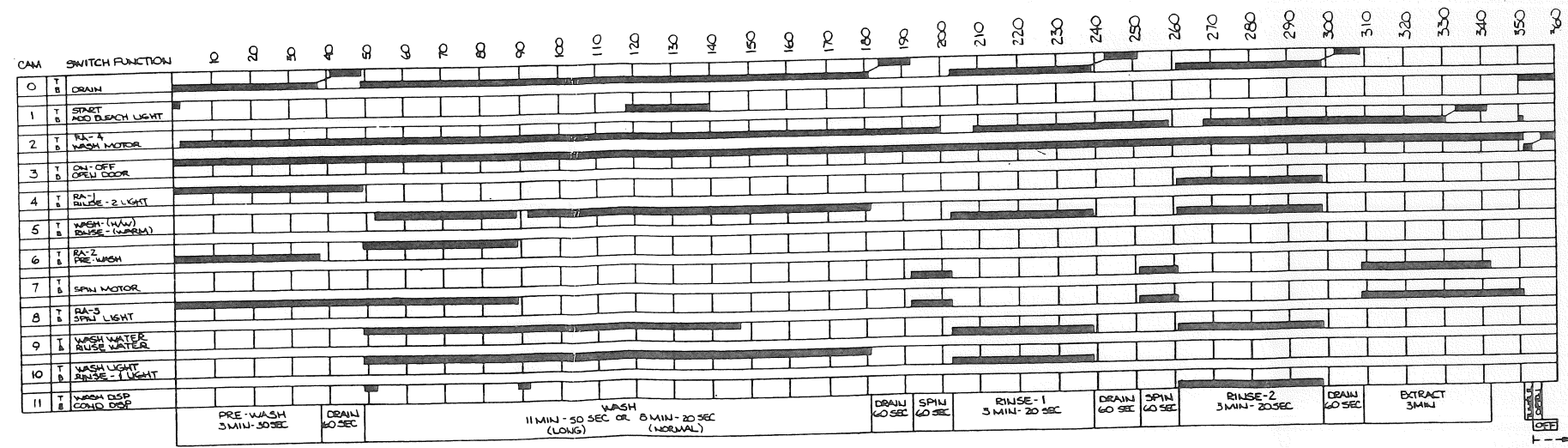
WIRING LABEL - DIAGRAM, 3 PH. MOTOR, 60 HZ.



**LEGEND**

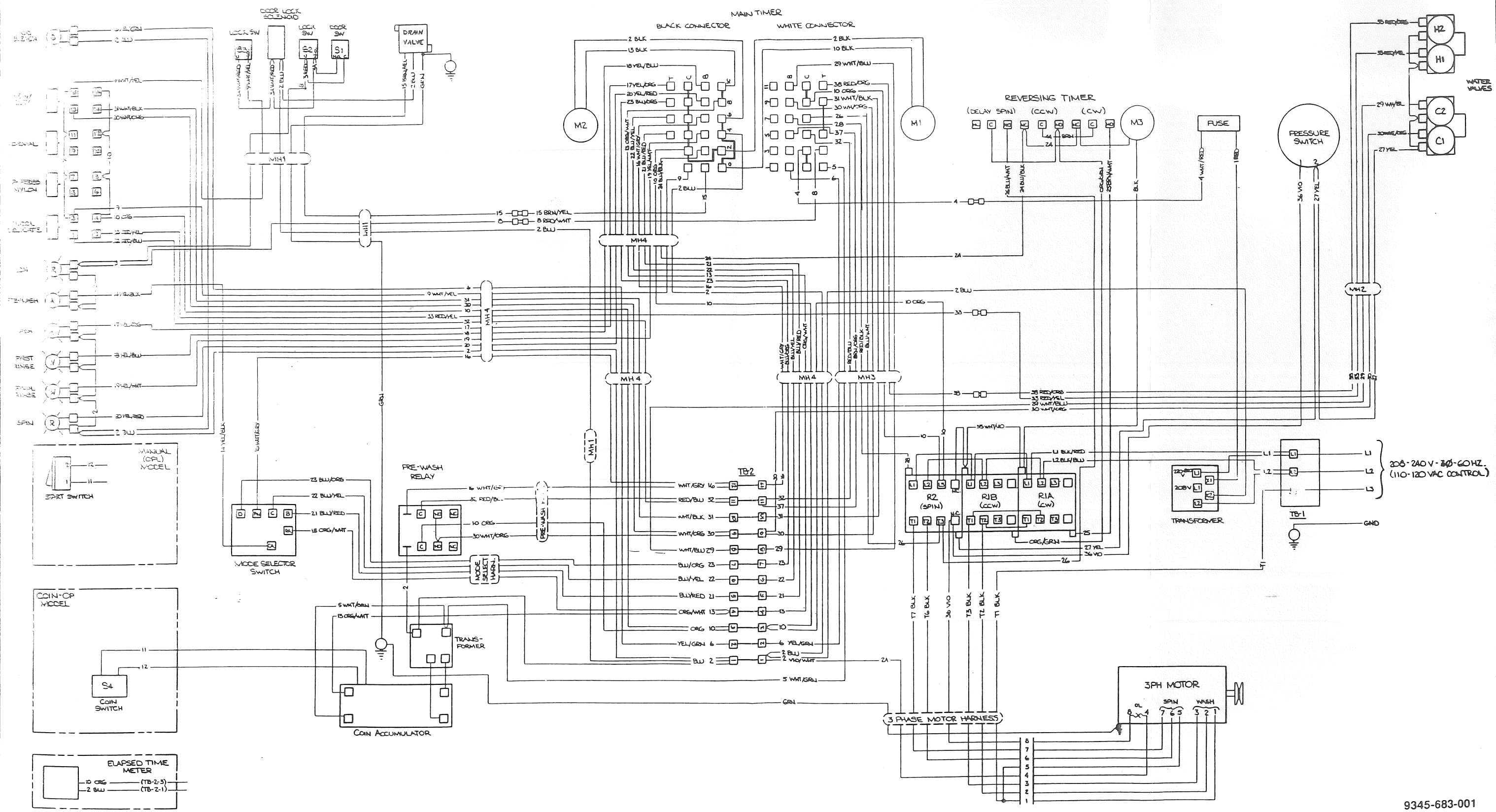
- C1 - COLD WATER VALVE SOLENOID (TUB)
- C2 - COLD WATER VALVE SOLENOID (CONDITIONER DISPENSER)
- DL - DOOR LOCK SOLENOID
- DV - DRAIN VALVE
- H1 - HOT WATER VALVE SOLENOID (TUB)
- H2 - HOT WATER VALVE SOLENOID (WASH DISPENSER)
- M1 - MAIN TIMER MOTOR
- M2 - RAPID ADVANCE TIMER MOTOR
- M3 - REVERSING TIMER MOTOR
- M4 - ELAPSED TIME METER (OPTIONAL)
- PS - PRESSURE SWITCH
- R1A - WASH MOTOR CONTACTOR (CW)
- R1B - WASH MOTOR CONTACTOR (CCW)
- R2 - SPIN MOTOR CONTACTOR (CCW)
- R3 - PRE-WASH RELAY
- S1 - DOOR SWITCH (DOOR LATCHED)
- S2 - LOCK SWITCH (DOOR LOCKED)
- S3 - LOCK SWITCH (DOOR UNLOCKED)
- S4 - COIN SWITCH (DETECTS COIN)
- S5 - DOOR SWITCH (DOOR CLOSED)
- - MAIN TIMER CONTACT
- - PUSHBUTTON CONTACT
- - MODE SELECTOR SWITCH (SEE BELOW)
- - INTERNAL TIMER CONNECTION
- - INDICATOR LIGHT
- \* - MANUAL MODEL ONLY
- \*\* - COIN-OP MODEL ONLY

- MODE SELECTOR SWITCH**
- ① - PRE-WASH + LONG WASH
  - ② - LONG WASH
  - ③ - PRE-WASH + NORMAL WASH
  - ④ - NORMAL WASH

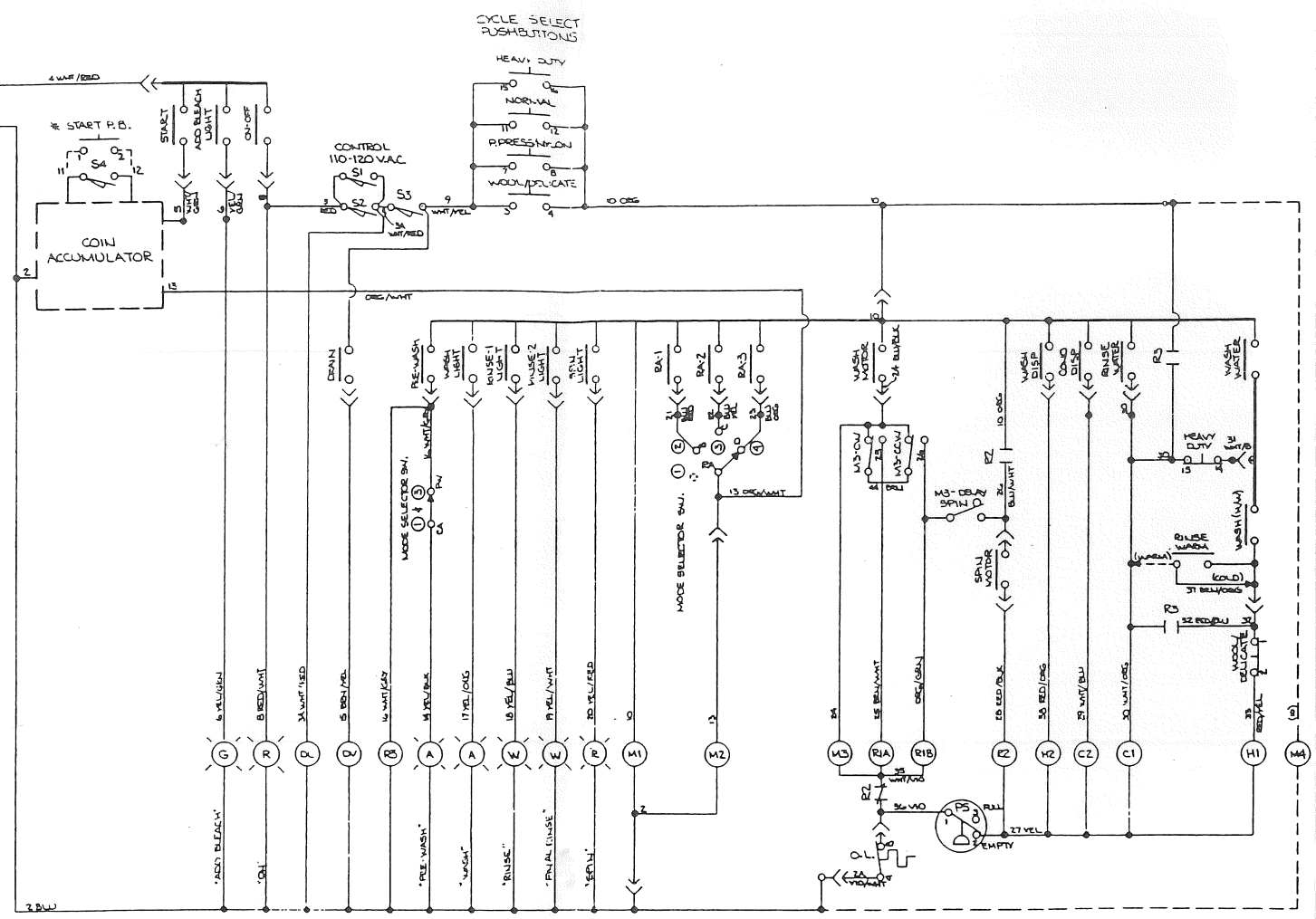
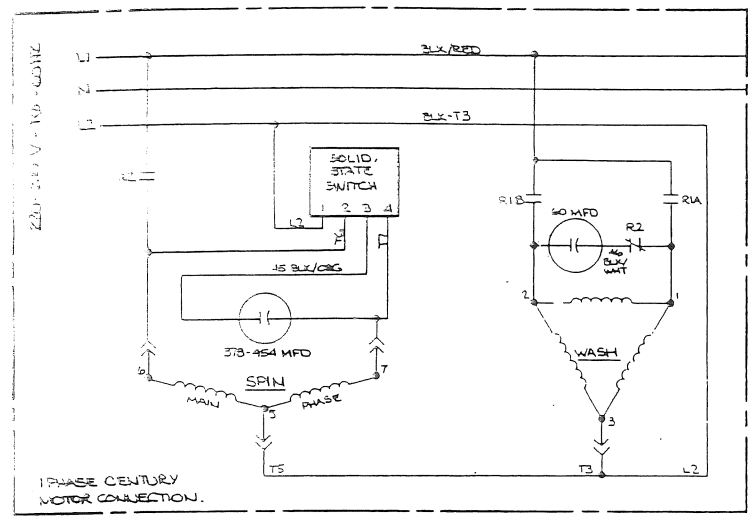
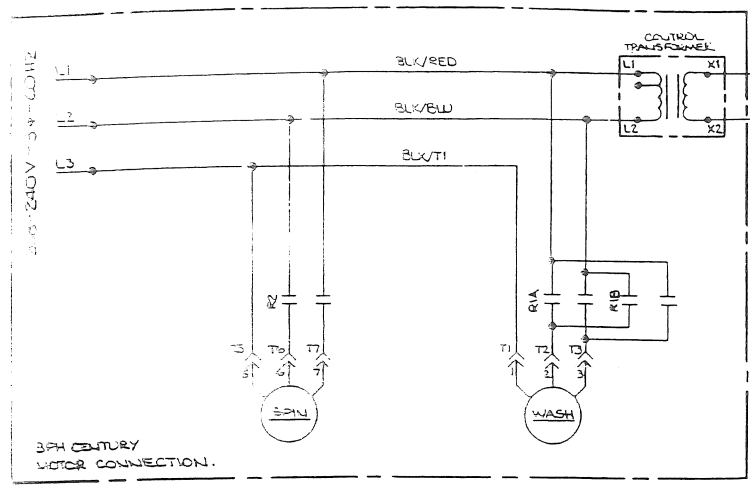


--- RAPID ADVANCE FOR APPROX 10" AT START OF CYCLE.





**WIRING LABEL - DIAGRAM, 3 PH. MOTOR, 60 HZ. FOR WCE4 SERIES WASHER (WITH 3 CAM REVERSING TIMER)**



- LEGEND**
- C1 - COLD WATER VALVE SOLENOID (TUB)
  - C2 - COLD WATER VALVE SOLENOID (CONDITIONER DISPENSER)
  - DL - DOOR LOCK SOLENOID
  - DV - DRAIN VALVE
  - H1 - HOT WATER VALVE SOLENOID (TUB)
  - H2 - HOT WATER VALVE SOLENOID (WASH DISPENSER)
  - M1 - MAIN TIMER MOTOR
  - M2 - RAPID ADVANCE TIMER MOTOR
  - M3 - REVERSING TIMER MOTOR
  - M4 - ELAPSED TIME METER (OPTIONAL)
  - PS - PRESSURE SWITCH
  - R1A - WASH MOTOR CONTACTOR (CW)
  - R1B - WASH MOTOR CONTACTOR (CCW)
  - R2 - SPIN MOTOR CONTACTOR (CCW)
  - R3 - PRE-WASH RELAY
  - S1 - DOOR SWITCH (DOOR LATCHED)
  - S2 - LOCK SWITCH (DOOR LOCKED)
  - S3 - LOCK SWITCH (DOOR LOCKED)
  - S4 - COIN SWITCH (DETECTS COIN)
- MAIN TIMER CONTACT  
 ○ PUSHBUTTON CONTACT  
 ○ MODE SELECTOR SWITCH (SEE BELOW)  
 — INTERNAL TIMER CONNECTION  
 ○ INDICATOR LIGHT  
 \* - MANUAL MODEL ONLY  
 \*\* - COIN-OP MODEL ONLY
- MODE SELECTOR SWITCH**
- ① - PRE-WASH & LONG WASH
  - ② - LONG WASH
  - ③ - PRE-WASH & NORMAL WASH
  - ④ - NORMAL WASH
- \*\* - REVERSING TIMER WITH DELAY SPIN CAM TO PROVIDE ASSURED TUMBLE BEFORE SPIN TO GIVE BETTER DISTRIBUTION OF LOAD.

CAM	SWITCH FUNCTION	10	20	30	40	50	60	70	80	90	100	110	120	130	140	150	160	170	180	190	200	210	220	230	240	250	260	270	280	290	300	310	320	330	340	350	360
0	T B	DRAIN																																			
1	T B	START AND BLEACH LIGHT																																			
2	T B	WASH MOTOR																																			
3	T B	ON-OFF OPEN DOOR																																			
4	T B	R1A RINSE-2 LIGHT																																			
5	T B	WASH (WAW) RINSE (WARW)																																			
6	T B	R1A-2 PREWASH																																			
7	T B	SPIN MOTOR																																			
8	T B	R1A-3 SPIN LIGHT																																			
9	T B	WASH WATER RINSE WATER																																			
10	T B	WASH LIGHT RINSE-1 LIGHT																																			
11	T B	WASH COND. OFF																																			

PRE-WASH 3 MIN - 30 SEC    DRAIN 10 SEC    WASH 11 MIN - 30 SEC OR 8 MIN - 20 SEC (LONG) (NORMAL)    DRAIN 60 SEC    SPIN 60 SEC    RINSE-1 3 MIN - 20 SEC    DRAIN 60 SEC    SPIN 60 SEC    RINSE-2 3 MIN - 20 SEC    DRAIN 60 SEC    EXTRACT 3 MIN

RAPID ADVANCE FOR APPROX 10" AT START OF CYCLE.

**WIRING LABEL - SCHEMATIC, 1 & 3 MOTORS, 60 HZ. FOR WCE4 SERIES WASHER (WITH 3 CAM REVERSING TIMER)**