

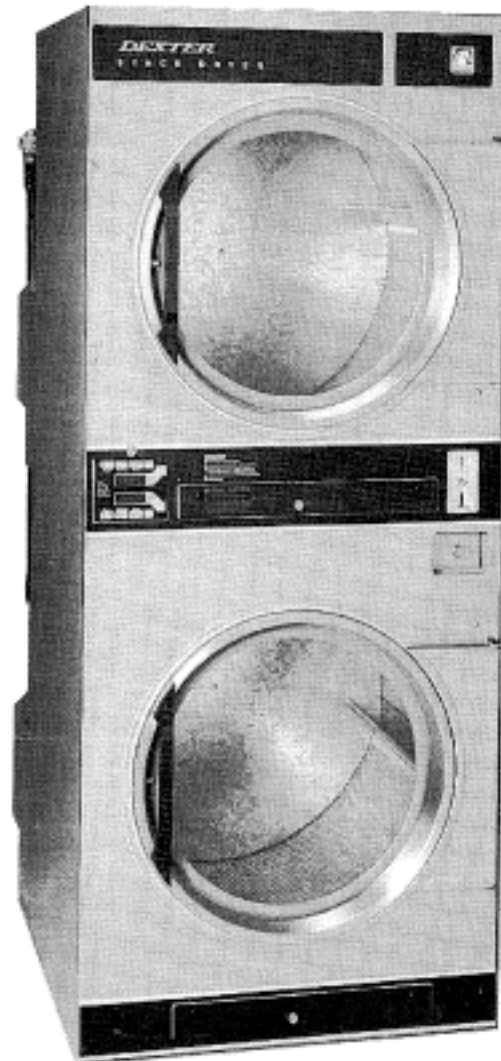


***DEXTER***<sup>®</sup>  
***LAUNDRY***

**USE THE BLUE TABS LOCATED ON THE  
RIGHT AND LEFT SIDES OF THE FOLLOWING  
DOCUMENT TO ADVANCE TO EACH SECTION.**











**DEXTER**  
LAUNDRY



DL2X30 Model  
30 Pound Stacked Commercial Dryer  
120V Control

Service and Parts Manual

## Equipment Safety Warnings Symbols and Terminology Used in this Equipment

 <b>DANGER</b>	Indicates an imminently hazardous situation, which if not avoided, will result in death or serious injury.
 <b>WARNING</b>	Indicates a potentially hazardous situation, which if not avoided could result in death or serious injury.
 <b>CAUTION</b>	Indicates a potentially hazardous situation which, if not avoided, may result in minor or moderate injury. It may also be used to alert against unsafe practices. Minor burns, pinch points that result in bruises and minor chemical irritation.
<b>NOTICE</b>	Indicates information or a company policy that relates directly or indirectly to the safety of personnel or protection of property.
	This is the user caution symbol. It indicates a condition where damage to the equipment resulting in injury to the operator could occur if operational procedures are not followed. <b>TO REDUCE THE RISK OF DAMAGE OR INJURY, refer to accompanying documents; follow all steps or procedures as instructed.</b>
	This is the electrical hazard symbol. It indicates that there are <b>DANGEROUS HIGH VOLTAGES PRESENT</b> inside the enclosure of this product. <b>TO REDUCE THE RISK OF FIRE OR ELECTRIC SHOCK, do not attempt to open the enclosure or gain access to areas where you are not instructed to do so. REFER SERVICING TO QUALIFIED SERVICE PERSONEL ONLY</b>
	<b>Caution!</b> There are sharp edges on various sheet metal parts internal to the enclosure. Use safety consciousness when placing or moving your hands while working in the interior of this equipment.
	<b>Caution!</b> To reduce the risk of damage to the Water Inlet Valve, do not supply inlet water with a temperature that exceeds 70° C.
	<b>Caution!</b> To reduce the risk of fire or explosion, do not operate this equipment in any hazardous classified (ATEX) environment.

## Equipment Safety Warnings Symbols and Terminology Used in this Equipment



Warning! Do not operate equipment if door glass is damaged in any way.



Warning! Keep clear of rotating parts.



Prohibited! Do not enter this equipment or space.



Prohibited! Do not step or stand on this equipment.



Prohibited! Do not operate without all guards and covers in place.










Prohibited! Do not operate without all guards and covers in place.



Prohibited! Do not wash or Dry clothing impregnated with flammable liquids (petrochemical).



Prohibited! Do not allow children to play in or around equipment.

	Indicates an imminently hazardous situation, which if not avoided, <u>will result</u> in death or serious injury.
	Indicates a potentially hazardous situation, which if not avoided <u>could result</u> in death or serious injury.
	Indicates a potentially hazardous situation which, if not avoided, <u>may result</u> in minor or moderate injury. It may also be used to alert against unsafe practices. Minor burns, pinch points that result in bruises and minor chemical irritation.
	Indicates information or a company policy that relates directly or indirectly to the safety of personnel or protection of property.
	This is the user caution symbol. It indicates a condition where damage to the equipment resulting in injury to the operator could occur if operational procedures are not followed. <b>TO REDUCE THE RISK OF DAMAGE OR INJURY, refer to accompanying documents; follow all steps or procedures as instructed.</b>
	This is the electrical hazard symbol. It indicates that there are <b>DANGEROUS HIGH VOLTAGES PRESENT</b> inside the enclosure of this product. <b>TO REDUCE THE RISK OF FIRE OR ELECTRIC SHOCK, do not attempt to open the enclosure or gain access to areas where you are not instructed to do so. REFER SERVICING TO QUALIFIED SERVICE PERSONEL ONLY</b>
	Caution! To reduce the risk of fire or explosion, do not operate this equipment in any hazardous classified (ATEX) environment.



## WARNING



- All Dryers must be installed in accordance to all applicable electrical, plumbing and all other local codes.

- These installation and operation instructions are for use by qualified personnel only. To avoid injury and electrical shock, do not perform any servicing other than that contained in the installation and operation instructions, unless qualified.



Do not install Equipment in an explosive atmosphere.



- Care must be stressed with all foundation work to ensure a stable unit installation, eliminating possibilities of excessive vibration.

- Foundation must be level within 13 mm to ensure proper washer operation.



Do not operate washer or Dryer if door glass is damaged in any way.



Do not wash or Dry clothing impregnated with flammable liquids (petrochemical).



## WARNING



Children should be supervised to ensure they do not operate or play in or around equipment.








Keep all panels in place to protect against electrical shock and injury and add rigidity to washer.

This appliance is not intended for use by persons (including children) with reduced physical, sensory or mental capabilities, or lack of experience and knowledge, unless they have been given supervision or instruction concerning use of the appliance by a person responsible for their safety.

A washer should not be allowed to operate if any of the following occur:

- Excessive high water level.
- Machine is not connected to a properly earthed circuit.
- Door does not remain securely locked during the entire cycle.
- Vibration or shaking from an inadequate mounting or foundation

	<b>Warning! Do not operate equipment if door glass is damaged in any way.</b>
	<b>Warning! Keep clear of rotating parts.</b>
	<b>Prohibited! Do not enter this equipment or space.</b>
	<b>Prohibited! Do not step or stand on this equipment.</b>
	<b>Prohibited! Do not operate without all guards and covers in place.</b>
	<b>Prohibited! Do not operate without all guards and covers in place.</b>
	<b>Prohibited! Do not wash or Dry clothing impregnated with flammable liquids (petrochemical).</b>
	<b>Prohibited! Do not allow children to play in or around equipment.</b>

	<b>Prohibited! Do not attempt to open, touch, or proceed before referring to the manual or unless qualified.</b>
	<b>Mandatory! Read all supporting documentation before operating or maintaining equipment.</b>
	<b>Mandatory! Disconnect power before servicing equipment.</b>
	<b>Mandatory! Lock out and tag out before servicing this equipment.</b>
	<b>Mandatory! Children should be supervised to ensure they do not operate equipment.</b>





---

# Section 1: Specifications

---

## SPECIFICATIONS

DL2X30AA

CAPACITY: Maximum 30 pounds dry weight each tumbler

DRIVE MOTOR: Two 1/2 HP. Motors

CONSTRUCTION: Standard trunnion style cylinder support

AIR FLOW: 500 CFM total air flow per tumbler. Fully perforated tumbler for cross flow air circulation.

BTU RATING: 80,00 BTU per tumbler

IGNITION: Direct spark electronic ignition

EXHAUST CONNECTION: Exhaust kit allows machine to be connected to one 8" connection

GAS CONNECTION: One 1/2" gas line

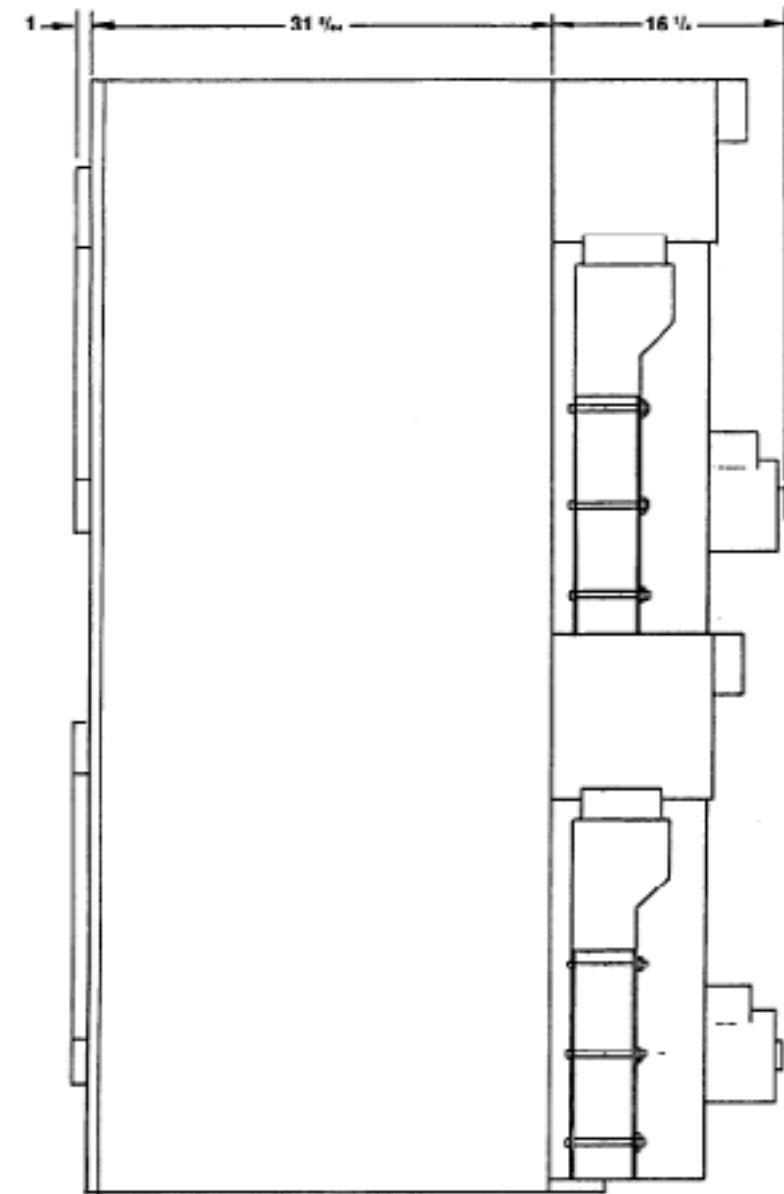
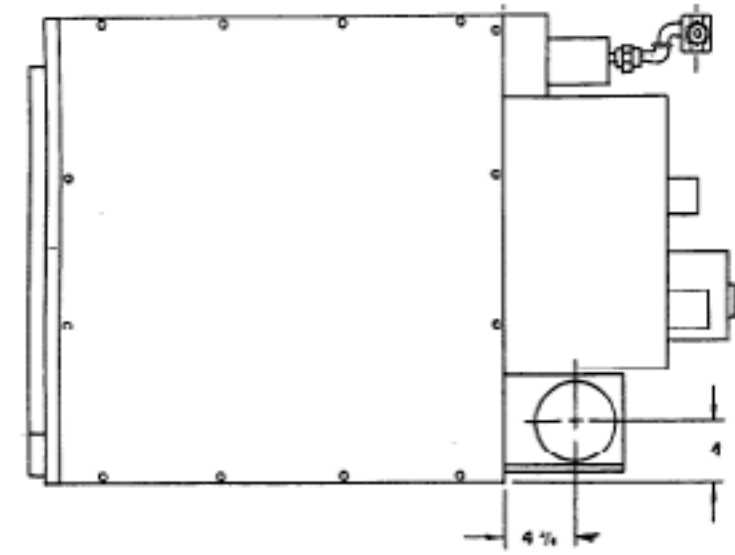
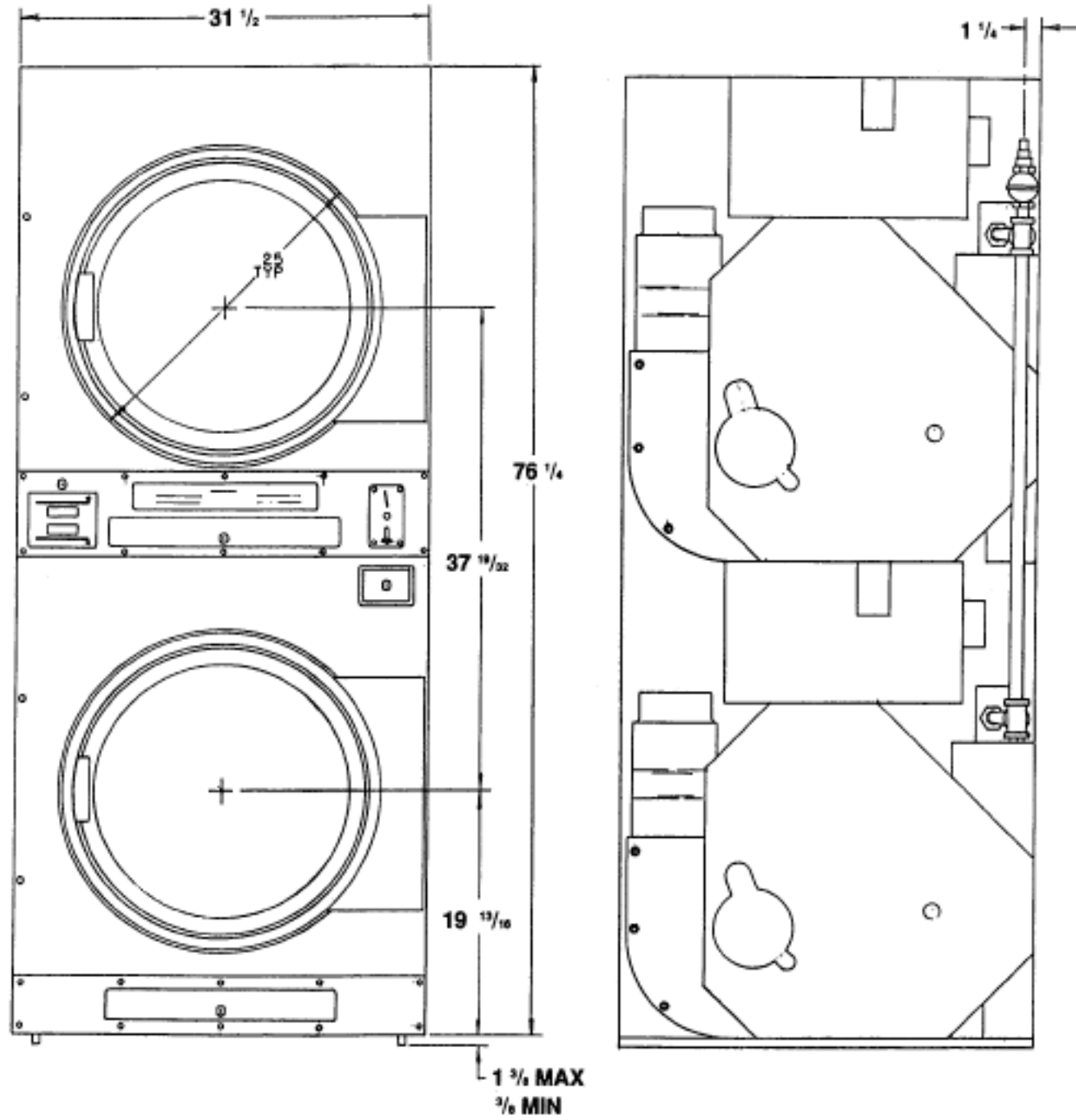
ELECTRICAL: 120 volt AC, 60Hz., 1 Phase

Single electrical connection requiring 30 amp circuit breaker or equivalent  
Running current approximately 20 amps when both tumblers are operating

COINAGE: One \$0.25 drop coin acceptor

TEMPERATURE CONTROL: Electronically controlled drying temperatures and cool-down temperatures may be reprogrammed

# Dexter T30x2 Stack Dryer Installation Dimensions



## Section 2: Installation & Operation

### DRYER INSTALLATION

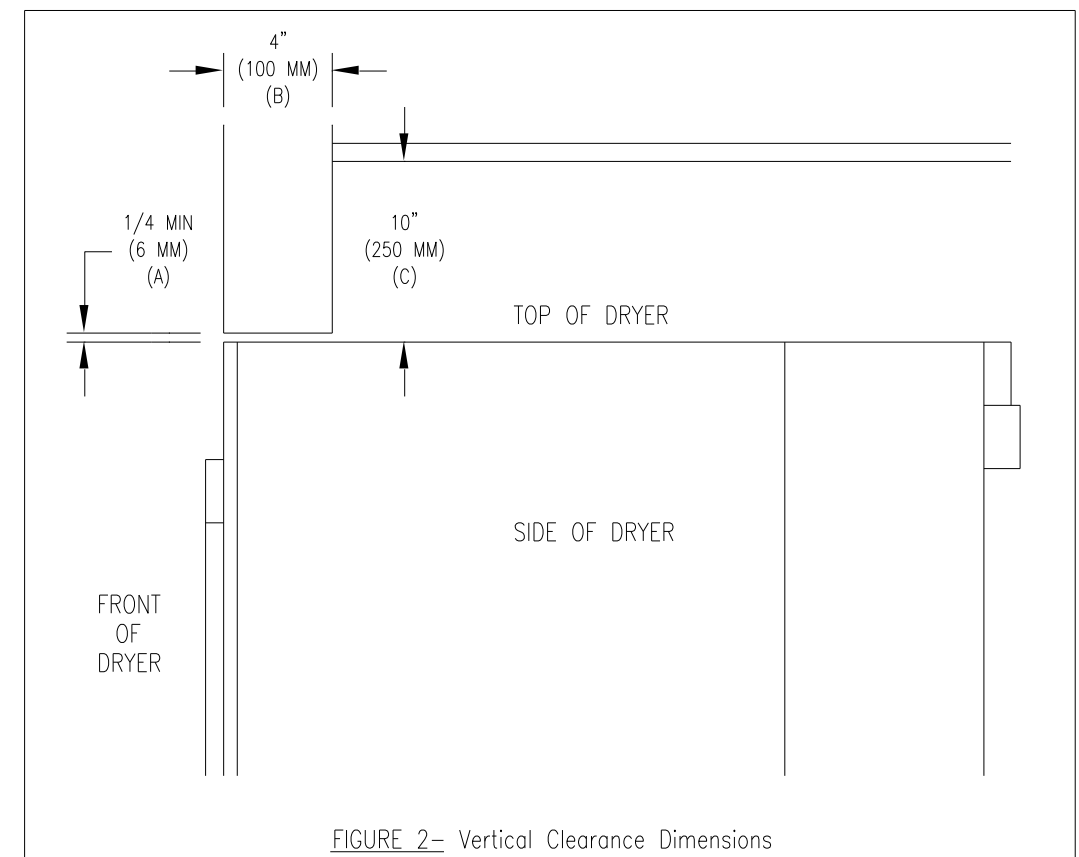
**1. CODE CONFORMITY:** All commercial dryer installations must conform with local codes, or in the absence of local codes, with the latest edition of the National Fuel Gas Code ANSI Z223.1. Canadian installations must comply with the current Standard CAN/CGA-B149 (.1 or .2) Installation Code for Gas Burning Appliances or Equipment, and local codes if applicable. Australian installations must meet installation requirements and pipe sizing requirements of AS/NZA 5601. The appliance, when installed, must be electrically grounded in accordance with the latest edition of the National Electric Code, ANSI/NFPA70, or, when installed in Canada, with Standard CSA C22.1 Canadian Electrical Code Part 1.

**2. INSTALLATION CLEARANCES:** This unit may be installed at the following alcove clearances:

- I. Left Side 0"
- II. Right Side 0"
- III. Back 18" (457 mm) (Certified for 6" (150 mm) clearance; however, 18" (457 mm) clearance is necessary behind the motors to allow servicing and maintenance.)
- IV. Front 48" (1220 mm) (to allow use of dryer)
- V. Top Refer to figure labeled "Vertical Clearance Dimensions".  
AB. Certification allows 0" clearance at the top 4" (100 mm) back from the front.  
However, a 1/4" (6 mm) clearance should be allowed in case the dryer needs moving.  
C. A 10" (250 mm) clearance is required from top at all other points.
- VI. Floor This unit may be installed upon a combustible floor.

Do not obstruct the flow of combustion and ventilation air.

Maintain minimum of 1" (25 mm) clearance between duct and combustible material.



**3. MAKE-UP AIR:** Adequate make-up air must be supplied to replace air exhausted by dryers on all types of installations. Provide a minimum of 1 1/2 square feet of make-up air opening to the outside for each dryer. This is a net requirement of effective area Screens, grills or louvers which will restrict the flow of air must be considered. Consult the supplier to determine the free area equivalent for the grill being used. The source of make-up air should be located sufficiently away from the dryers to allow an even air flow to the air intakes of all dryers. Multiple openings should be provided.

NOTE:

The following considerations must be observed for gas dryer installations where dry cleaners are installed. The sources of all make-up air and room ventilation air movement to all dryers must be located away from any dry cleaners. This is necessary so that solvent vapors will not be drawn into the dryer inlet ducts. Dry cleaner solvent vapors will decompose in contact with an open flame such as the gas flame present in clothes dryers. The decomposition products are highly corrosive and will cause damage to the dryer ducts and clothes loads

**4. ELECTRICAL REQUIREMENTS.** The electrical requirements necessary to operate the unit satisfactorily are listed on the serial plate located on the back panel of each dryer. The electrical connection should be made to the pigtail leads in the outlet box on the rear of the unit, using #10 AWG wire. ONE 30 Amp circuit breakers is required for each complete stack dryer. The wiring diagram is located on the belt guard on the back of the dryer.

NOTE:

IT IS ABSOLUTELY ESSENTIAL THAT THE DRYER BE GROUNDED BY A SEPARATE GROUND CONDUCTOR FROM THE GROUND SCREW ON THE DRYER TO THE NEUTRAL BAR IN THE SUPPLY BREAKER BOX.

NOTE: WHEN INITIALLY CONNECTING POWER TO THE MACHINE IF UNUSUAL BEHAVIOR OF THE DISPLAY OR CONTROLS OCCUR GIVE THE MACHINE AN HOUR TO STABILIZE AND CHECK OPERATION AGAIN.

**5. GAS REQUIREMENTS.** The complete gas requirements necessary to operate the dryer satisfactorily are listed on the serial plate located on the back panel of the dryer. The inlet gas connection to the unit is 1/2 inch pipe thread. However, the size of the piping to supply the dryer should be determined by reference to the Fuel Gas Code and consulting the local gas supplier.

A joint compound resistant to the action of liquefied petroleum gases should be employed in making pipe connections. A 1/8 inch NPT plugged tapping, accessible for test gage connection, must be installed immediately upstream of the gas supply connection to the dryer.

A drip tee is provided in the unit gas piping to catch dirt and other foreign articles.

All pipe connections should be checked for leakage with soap solution or leak detector. Never check with an open flame.

**CAUTION:** The dryer and its individual shutoff valve must be disconnected from the gas supply piping system during any pressure testing of that system at test pressures in excess of 1/2 psig. The dryer must be isolated from the gas supply piping system by closing its individual manual shutoff valve during any pressure testing of the gas supply piping system at test pressures equal to or less than 1/2 psig.

**6. EXHAUST INSTALLATION.** We recommend using the factory designed offset and collector system for exhausting the dryer. This two 6" into one 8" collector is designed to minimize back pressure to the units. Exhausting of the dryer should always be planned and constructed so that minimum air restrictions occur. (Refer to Figure on dryer exhausting). Any restriction due to pipe size or type of installation can cause slow drying time, excessive heat, and lint build up in system and the room.

From an operational standpoint, incorrect or inadequate exhausting can cause cycling of the high limit thermostat which shuts off the main burners and results in inefficient drying.

Individual exhausting of the dryer is recommended. All heat, moisture, and lint should be exhausted outside by attaching a pipe of the proper diameter to the dryer adapter collars and extending it out through an outside wall. This pipe must be very smooth on the inside, as rough surfaces tend to collect lint which will eventually clog the ducts and prevent the dryer from exhausting properly. All elbows must be smooth on the inside. All joints must be made so the exhaust end of one pipe is inside the next one downstream. The addition of an exhaust pipe tends to reduce the amount of air the blower can exhaust. This does not affect the dryer operation if held within practical limits. For the most efficient operation, it is recommended that no more than 14 feet of straight 6" diameter pipe with two right angle elbows be used for each cylinder. When more than two elbows are used, two feet of straight pipe should be removed for each additional elbow. No more than two right angle elbows should be used to exhaust each cylinder.

If the exhaust pipe passes through a wall, a metal sleeve of slightly larger diameter should be set in the wall and the exhaust pipe passed through this sleeve. This practice is required by some local codes and is recommended in all cases to protect the wall.

This type of installation should have a means provided to prevent rain and high winds from entering the exhaust when the dryer is not in use. A hood with a hinged damper can be used for this purpose. Another method would be to point the outlet end of the pipe downward to prevent entrance of wind and rain. In either case, the outlet should be kept clear by at least 24" of any objects which would cause air restrictions.

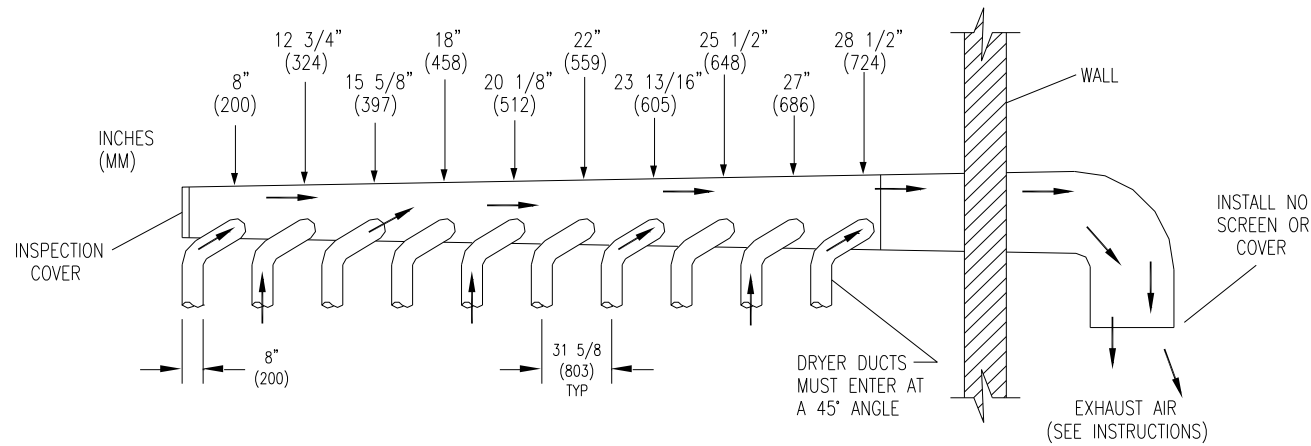
Never install a protective screen over the exhaust outlet.

When exhausting a dryer straight up through a roof, the overall length of the duct has the same limits as exhausting through a wall. A rain cap must be placed on top of the exhaust and must be of such a type as to be free from clogging. The type using a cone shaped "roof" over the pipe is suitable for this application.

Exhausting the dryer into a chimney or under a building is not permitted. In either case there is a danger of lint build-up which can be highly combustible. Installation of several dryers where a main discharge duct is necessary, will need the following considerations for installation. Whether using the 8" exhaust kit or individual 6" ducts entrance into the main discharge duct should be at a 45 degree angle in the direction of discharge air flow.

NOTE: Never install either the 8" kit or individual 6" ducts at a right angle into the main discharge duct. The following illustration shows the various round main duct diameters to use with the individual dryer ducts. The main duct can be rectangular or round, provided adequate air flow is maintained. For each individual cylinder the total exhausting (main discharge duct plus duct outlet from the dryer) should not exceed the equivalent of 14 feet and two elbows. The diameter of the main discharge duct at the last dryer must be maintained to exhaust end.

NOTE: A small diameter duct will restrict air flow, a large diameter duct will reduce air velocity, both contributing to lint build up. An inspection door should be provided for periodic clean-out of the main duct.



### DESCRIPTION OF CONTROL

The single electronic control unit controls all coin counting, timing, temperature control and displaying of information for both tumblers.

Each digital display shows vend price when its particular tumbler is waiting for coins to be inserted. When a tumbler is in use, the display shows the number of minutes remaining to be used on that tumbler.

The small green light to the left of the displays flashes to indicate that money has been added to the coin acceptor. The flashing stops when the customer credits the coins to one tumbler or the other by touching a start button or temperature selection button for the appropriate tumbler. At this time the purchased time is reflected by the digital display.

The three temperature selection buttons for each tumbler also have indicator lights to indicate which selection of temperature has been made. At the end of the cycle, the digital display flashes until the operator opens the door to remove his load.

Temperature readout for each tumbler is available by pressing the temperature that is in use along with the start button for that tumbler.

### OPERATING INSTRUCTIONS

1. Load clothes into the tumbler and close the door.
2. Deposit the vend price that is shown in the display. Choose the desired temperature for the tumbler to be used and then push the start button.
3. Additional time may be purchased and is added to the displayed time by touching the start button or temperature selection button.

#### Characteristics of running dryer:

- Temperature selection may be changed at any time with the dryer running.
- Running time may be extended any time that time is showing on the display even if the added amount is less than the original vend price.

#### PROGRAMMED DATA

Adjustable parameters are vend price, temperatures, and cool-down times. Hours run and money count information can be displayed and these registers are resettable to zero. There are sixteen programming steps. These sixteen steps are: (all temperatures are degrees Fahrenheit).

STEP	DESCRIPTION	RANGE	PROGRAMMING INCREMENTS	ORIGINAL SETTINGS
00	Lower drum hour meter	0 to 9999 hr.	—	0
01	Upper drum hour meter	0 to 9999 hr.	—	0
02	Left coin audit	0 to \$9999	—	0
03	Right coin audit	0 to \$9999	—	0
04	Hot temp. setting	150-190	5	175
05	Medium temp. setting	120-170	5	150
06	Warm temp. setting	110-150	5	125
07	Left coin input	0-100	5 cents	.10
08	Right coin input	0-100	5 cents	.25
09	Vend price	0-100	5 cents	.25
10	Time left coin	0-99:55 minutes	5 sec.	3:20
11	Time right coin	0-99:55 minutes	5 sec.	10:00
12	Time for free vend	0-99:55 minutes	5 sec.	10:00
13	Cool down time Hot cycle	0-10:00 minutes	5 sec.	2:00
14	Cool down time Medium	0-10:00 minutes	5 sec.	2:00
15	Cool down time Warm cycle	0-10:00 minutes	5 sec.	2:00
16	Temperature Type display	Centigrade or Fahrenheit	C or F	F

## CHANGING PROGRAMMED DATA

### ENTERING PROGRAM MODE

The controller is put into the programming mode by opening both dryer doors and actuation of the program switch on the back of the controller circuit board. The switch is accessed by unlocking the controller and sliding it out just enough to reach the switch.

### PROGRAMMING

The upper display shows the setting for each step of the program as you go through the list. The lower display gives the number of the program step as given on the previous program step chart (00-15).

The lower "Hot Switch" will advance the controller through the sixteen steps which can be observed or altered. Each step can be identified by the step number in the lower display.

The upper and lower "Start switches" increase and decrease the values in the upper display by the increments given in the program step chart.

The lower "Perm Press" switch will return the value for the step being displayed to the original value given on the program step chart. Note: For the hourmeters and the money audit steps this value is zero.

### EXITING PROGRAM MODE

The controller remains in the programming mode until one of the following happens:

1. The mode switch is pushed again.
2. The sixteenth and last step of the programming sequence is completed (first step is 00, last step is 15) and the step switch is pushed following this step.
3. Programming is stopped for approximately one minute.
4. The dryer doors are closed.

### PROGRAMMING EXAMPLE

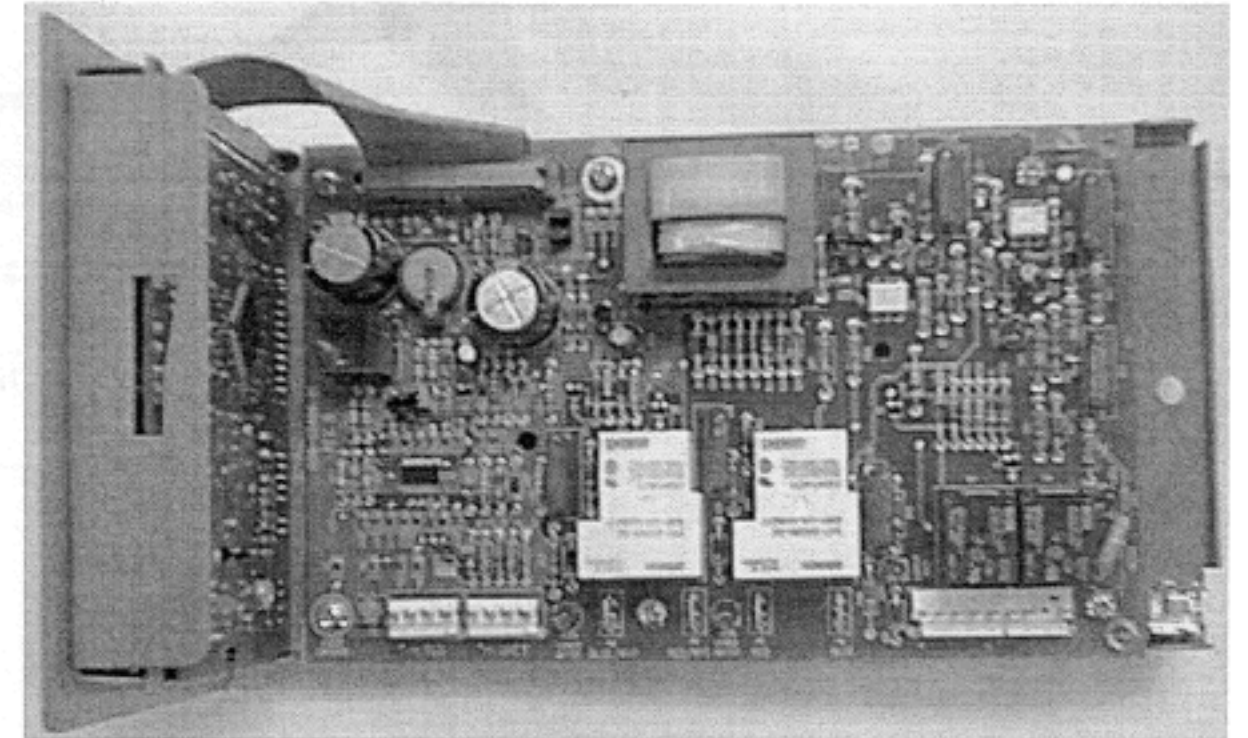
For an example we will change the vend price from 25 to 50.

#### Step

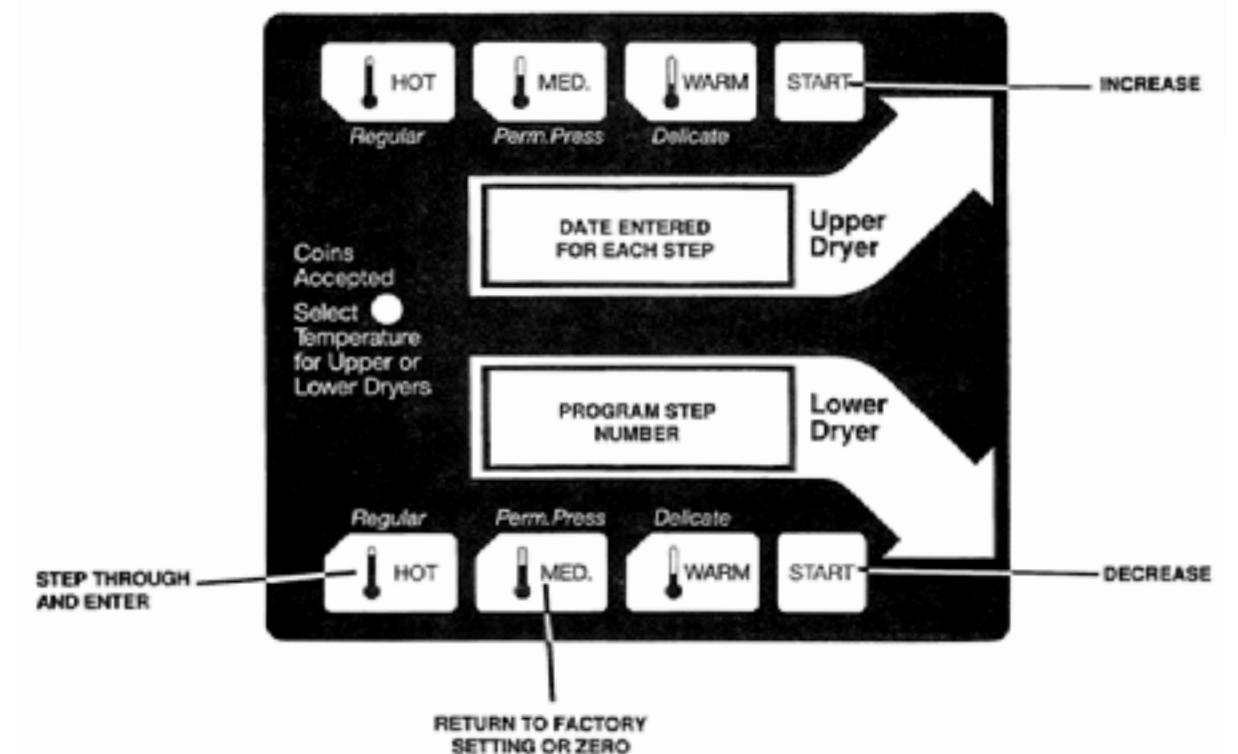
1. Open upper and lower loading doors.
2. Unlock the control tray and carefully slide it about 3 inches out of the machine. Press the program switch behind the vertical portion of the circuit board. Replace and relock the control tray in its original position.
3. Consult program chart to find vend price as step 09. Push lower "Hot" button to advance through steps until 09 is displayed in lower display. Current vend price (25 in this case) will be displayed in upper window.
4. Push upper start button to increase price by increments of 5 until 50 is reached and shows in the upper display.

NOTE: To make any change it is necessary after changing the value to press the lower "Hot" and advance one more step in order for the new value to be entered into the computer memory.

5. Exit the program mode by any of the methods previously mentioned.
6. The displays should now show "50" as the price to start the machine.



## CHANGING PROGRAMMED DATA



---

# Section 3:

## Service Procedures

---

## Service Procedures

### Clothes Door Removal

1. The clothes door may be removed from the hinge bracket by unscrewing and removing the allen-head pivot screw located at the door upper hinge point.
2. Next lean the door out of the top of the hinge bracket and lift the door from the bottom hinge pin. Note the spacer between the bottom of the door and the hinge.

### Clothes Door Latch Adjustment

1. Loosen the lock nut on the latching stud. It is located directly behind the door handle.
2. Open the loading door.
3. Screw the door catch stud in or out as necessary and then retighten the lock nut.

### Door Switch Removal And Installation

1. Turn off power to machine.
2. Remove upper lint tray.
3. Unlock Controller.
4. Remove upper door hinge pin and remove door assembly.
5. Remove hinge plate screws and upper right hand screws.
6. Remove two lower left hand screws and loosen upper left hand screw.
7. Pull out right lower corner and remove two wires to switch..
8. Depress tabs and remove switch from the front.
9. To install reverse directions.

### Installation Of Clothes Door Window And Gasket

1. Place the clothes door, with its face down, on a solid surface.  
Note: Prewarming the gasket under a heat lamp makes the installation much easier.
2. Install the window gasket on the clothes door flange. The wider lip of the gasket should be on the bottom side or front face of the clothes door.
3. Lay the window glass on the gasket. Apply a soapy water solution or rubber lubricant around the circumference of the window.
4. Slide about a third of the glass through the door to the other side. Then start to push the glass into alignment with the door while working the gasket around the glass with a small tool with a rounded tip. Work the gasket completely around the glass.
5. Install the door glass support into the gasket at the bottom of the clothes door to keep the glass tight in the door.

### High Limit Thermostat Locations And Functions

- A. Burner Housing-** This hi-limit is located on the back side of each burner housing.
1. The thermostat opens the circuit to the main burners in the event of malfunction in the gas control area or temperature control. This thermostat will open quickly if there is a significant loss of air flow over the burner area.
  2. It is covered by a guard and is held in place by two screws. There are spacers between the thermostat and bracket which must be used to give proper operation.

**B. Over temperature Safety Thermostats-** The second hi-limit thermostat is located on the right side of each burner housing as you view from the back of the machine. It is just above the gas valve and covered by a guard with a small access hole.

1. The manually resettable thermostat limits the operating temperature a dryer can reach should some abnormal situation occur.
2. Should one of the thermostats be tripped, that particular tumbler will cease to heat until the thermostat is reset. Once the dryer cools, the thermostat may be reset by inserting a pencil or stick through the opening in the thermostat cover.

### Pressure Regulator Adjustment

Use the following procedure whenever it is necessary to check the pressure regulator setting.

**NOTE:** Any adjustment of the pressure regulator must be made with a manometer attached at the plug in the main burner manifold.

1. Shut off the gas supply to the dryer.
2. Remove the 1/8" pipe plug from the end of the main burner manifold.
3. Attach a manometer to the manifold end.
4. Remove the pressure regulator cover screw on the gas valve.
5. Open the shutoff valve, and operate the dryer.
6. Adjust the pressure for a manometer reading of 3.5" water column gas pressure. (11.0" for L.P.)

**NOTE:** The main burners must be operating when adjusting the pressure regulator.

7. Shut off the gas supply to the dryer. Remove the manometer and install the 1/8" pipe plug in the manifold.
8. Open the shut off valve, start the dryer and check for gas leaks while the burners are ignited.

### Coin Acceptor Removal

Loosen the four screws (Torx #10 driver) mounting the coin acceptor to its retaining bracket.

Do not remove the screws or the retainer will fall behind the panel.

Shift the acceptor up and down to allow the retainer to slide through the panel opening. When removing, the bottom should be brought through the panel opening first. When reinstalling, the top should go in first.

### Coin Switch Adjustment

The coin switch should click soon after the coin hits the operator wire. However there must be enough travel to allow the switch to reset once the coin has passed. Adjustment should be made by bending the wire very close to its attachment point.

### Temperature Sensor

This unit takes the place of the regulating thermostat on a mechanical timer dryer. The Temperature/Heat Sensor is a thermistor. The way these work is fairly simple. As the temperature goes up, the resistance in the thermistor (heat sensor) goes down. As the temperature drops, the resistance in the thermistor (heat sensor) goes up.

### Electronic Control

The electronic control may show the following error codes in the display:

F1 or F2 in either display usually means that the sensor for that tumbler has either failed or the wires connecting that sensor to the control are not properly connected.

F1 or F2 in both displays at the same time usually would mean that the control itself is defective as it would be unlikely that both sensors would develop a problem at the same time.

F3 indicates that the control itself is probably defective.

### Electronic Control Removal

Unlock the retaining lock in the control assembly. The screw at the rear bottom of the control tray applies pressure to kick out the front of the tray when it is unlocked. Slide the control out of the machine holding the control by the metal tray. There is enough wire length to allow removing the control tray from the machine before disconnecting the wires.

### Membrane Switch Removal

The control buttons are an adhesive membrane switch assembly which may be replaced separately. Slide the control out to gain access to disconnect the ribbon connector.

The ribbon connector must be pushed solidly and squarely into its connector when connecting a new membrane switch.

### Temperature Sensor Testing

If either tumbler display shows an F1 or F2 display that is an indication of possible temperature sensor problems for that tumbler. Before replacing a sensor check the wires and connections of the sensor wires for damage. The sensor lead wires are very small and care should be used in routing and connecting them. The sensors are located under the tumblers and may be viewed by removing the each lint screen.

### Temperature Sensor Removal

**UPPER -** To remove the upper temperature sensor first remove the electronic control from the machine. Then reach through the opening in the front panel to remove the #10 screw that retains the sensor mounting bracket.

**LOWER -** To remove the lower temperature sensor it is necessary to remove the lower front panel to gain access to the mounting bracket. Then the bracket is removed as on the upper cylinder.

### Upper Front Panel Removal

To remove the upper front panel, first remove the loading door from the panel. Then remove the two left side screws and the four right side screws. The trim does not have to be removed. (The panel may be removed with the door left in place, although it is much heavier and more awkward to do so.)

### Lower Front Panel Removal

To remove the lower front panel a procedure similar to the upper may be used. However, the bottom of the upper panel must be loosened and pulled out to allow the upper flange of the lower panel clearance to be removed.

**NOTE:** Always remove power from the machine before changing drive belts or working with the drive system.

### Final Drive Belt Replacement

To replace the final drive belt turn the cylinder slowly by hand and work the belt off of the large pulley.

### Motor Drive Belt Replacement

To replace the motor drive belt the final drive belt should be removed as above. Cut the old motor belt and remove. The new motor drive belt fits inside of three of the four motor mounting bolts. To achieve this, remove these three bolts one at a time and slide the belt in past each in turn. In this way the motor is always supported by 3 bolts at any time.

## Tumbler Pulley Removal And Installation

Remove the 1 1/2" nut and lock washer. Pull the pulley off the shaft. Watch for the locking key on the tumbler shaft. Upon installation, the tumbler nut should be torqued to 150 ft./lbs.

**Note:** After Serial #226213 Remove bolt and washers holding pulley to cylinder shaft. Reinsert bolt then using two or three jaw puller Pull pulley straight off of shaft.

## Intermediate Pulley And Tension Arm Removal

1. The intermediate pulley can be removed by removing the snap rings holding the pulley to the tension arms.
2. With the pulley and tension springs removed, remove the snap ring from the center drive pin. The tension arms can now be removed in two pieces.

## Blower Impeller Removal

To gain access to the blower impeller it is necessary to remove both of the large pulleys. Then you have access to the 9 nuts that mount the motor mounting plate. When this plate is removed you have access to the impeller mounted on the other side.

## Air Flow Switch Operation And Adjustment

The air switch assembly is part of the ignition safety circuit and insures that the burners don't operate unless there is air flow. When the drive motor is running the flat actuator is pulled in against the back of the dryer actuating the switch. If this doesn't happen ignition will not occur. The air switch assembly is mounted by two screws through the bracket.

## Electronic Ignition Modules

This machine uses an electronic spark ignition system to directly light the burners in each tumbler.

1. The electronic ignition modules (gray boxes) for each tumbler are located inside their respective control box. This is the metal box on the back of each tumbler area directly to the right of the final drive pulleys.
2. The red wire from the transformer, thru the 1.5 amp fuse and into the module supplies the 24 volts required to operate the entire direct ignition system.
3. The black colored hi-voltage wire (spark plug type) plugs onto the post connector on the module, and the multi-wire plug fits into the side of the module.

## Spark Electrode Assembly - Function

1. The spark electrode and sensing electrodes are located directly over the rear burner inside the burner housing.
2. The electrode with the black hi-voltage wire conducts the spark to the center grounding probe, directly over the burner.
3. The electrode with the black sensing wire detects ignition and monitors flame by signaling the module.

NOTE: Proper grounding of the ignition system (yellow wires) is very critical for proper ignition sequence.

## Ignition System-Function & Sequence

During normal dryer operation, the following occurs:

1. The dryer electronic control calls for heat.
2. If the drive motor is running, the motor safety circuit provides power to the electronic control. If the control (senses that the heat should be on, a circuit is closed allowing power through the high limit thermostat and air flow switch to the ignition transformer. The transformer provides 24 V. of power to the ignition module (gray box) and power is applied to the gas valve and at the same time sparking occurs at the ignition electrode.
3. Once the flame is established, the sensing electrode detects the presence of flame and the sparking stops.
4. If for any reason the flame is not established in a period of 10 seconds, the gray box shuts down the sparking and closes the gas valve which is now in "Safety Lock-Out". Normally the 10 seconds "Trial For Ignition" period is ample to establish and prove flame.

5. If the flame is shut-down or blown out during operation, the ignitor will immediately go into "Trial For Ignition" again for 10 seconds.
6. However, if during any 10 second "Trial for Ignition", the flame is not established, the ignition system goes into "Safety Lock-Out" and will not reactivate the "Trial for Ignition" until there is a current interruption for a period of 15 seconds. This interruption can be provided by opening the dryer loading door and allowing the machine to come to a complete stop for 15 seconds.

## Ignition System-Checkout

1. If flame is present during "Trial For Ignition" period but the system shuts down, there may be an improper ground. The entire ignition system is grounded together including the electrode assembly, the electrode mounting bracket, the burners and the burner bracket. Shutdown can also occur if for some reason the system isn't sensing the flame. Check the sensor for damage and check the connections of the sensor lead.
2. If there is no spark or intermittent spark, check black hi-voltage lead wire for damage or cracks in insulation. (This lead wire must not be taped or connected to any metal edges along its length to prevent pinching and arcing. Also, do not bundle this wire with other wires.)

NOTE: Spark gap and electrode location are important. If the electrode is damaged or mounting is changed the spark gap may not be correct for ignition to occur. Check for cracks in the ceramic insulator. Replace electrode assembly if necessary. Also check for carbon or foreign material on the electrodes and clean if necessary.

## Spark Electrode Assembly-Removal

1. Remove electrode cover and disconnect wires to electrodes.
2. Remove two screws to detach electrode assembly.

## Gas Valve & Manifold Removal

1. Disconnect union at gas valve and disconnect wires from gas valve operator coils.
2. Remove right manifold mounting bracket screws and slide manifold to remove from left bracket.

## Main Burner Orifice Removal

1. Remove manifold and gas valve assembly as above.
2. Using an open end wrench, remove orifices from manifold.

## Main Burner Removal

Remove the 4 screws securing the cover for the burner housing and the one screw mounting the high limit cover. With the burner housing cover removed, there is complete access to the burner assemblies.

## Cylinder Pulley Removal

Remove nut holding pulley to cylinder shaft. Pull pulley straight off of shaft. Do not lose the key that engages shaft keyway.

## Cylinder Removal

1. Remove the front panel in front of the cylinder.
2. Remove drive belt, pulley, and key from cylinder shaft.
3. Pull the cylinder from the front of the machine.

---

### Adjustment Of Cylinder Assembly With Front Panel Removed

1. Loosen the two top adjusting bolts and two bottom adjusting nuts and lock nuts holding the bearing housing to the drive plate.
2. Loosen the four mounting bolts on the side channels.
3. Open the clothes door and insert a 1/2" thick shim at the 3 and 9 o'clock positions and a 1/4" thick shim at the 6 o'clock position.
4. Tighten the two bottom adjusting nuts and tighten locking nuts.
5. Tighten the bottom right mounting bolt, then the top left mounting bolt. Tighten the remaining two bolts. (Shim where and if necessary.)
6. Tighten the two top adjusting bolts.
7. Remove all the shims from between the front panel flange and cylinder (3, 6, 9 and 12 o'clock).
8. Spin the cylinder to check for rubbing baffles, pressing down hard while rotating. If rubbing is detected, repeat procedure paying particular attention to placement of shims between bearing housing and side channels.

### Bearing Housing Removal

After removing cylinder as previously outlined, simply unbolt the bearing housing and remove.

---

# Section 4:

## Troubleshooting

## TROUBLESHOOTING

Symptom	Probable Cause	Suggested Remedy
<b>Tumbler does not turn</b>	Drive belts	Check both drive belts. Replace if failed.
	Drive motor	Check capacitor and motor. Replace if failed
	Door switch	Check door switch contacts and adjustment. Adjust or replace door switch.
	Electronic control	Is electronic control closing motor relay to power drive motor? Check for voltage at relay.
	Overtemperature Thermostat	Check to see if manually resettable thermostat is kicked out.

Symptom	Probable Cause	Suggested Remedy
<b>Tumbler turns but no spark at burner</b>	Glass fuse	Check small glass control fuse in back of dryer. Replace if failed.
	Temperature sensor	The temperature sensor should have between 30,000 ohms and 60,000 ohms resistance at room temperature if okay. Replace if not in this range.
	Ignition Transformer	Check for 24VAC output from transformer.
	Ignition control	Try another control.
	Air flow switch	Check air flow switch to be sure it closes when dryer is running. If not, adjust or replace switch.
	Hi-limit	Check for continuity. Should be 0 ohms resistance when cold. If not, replace thermostat.
	Gas supply	No gas can cause system lockout
	Electronic control	Is electronic control closing gas relay to power Control heat circuit? Check for gas light on electronic control. If no light change control. If light is on, check voltage and components in heat circuit at transformer at rear of unit.

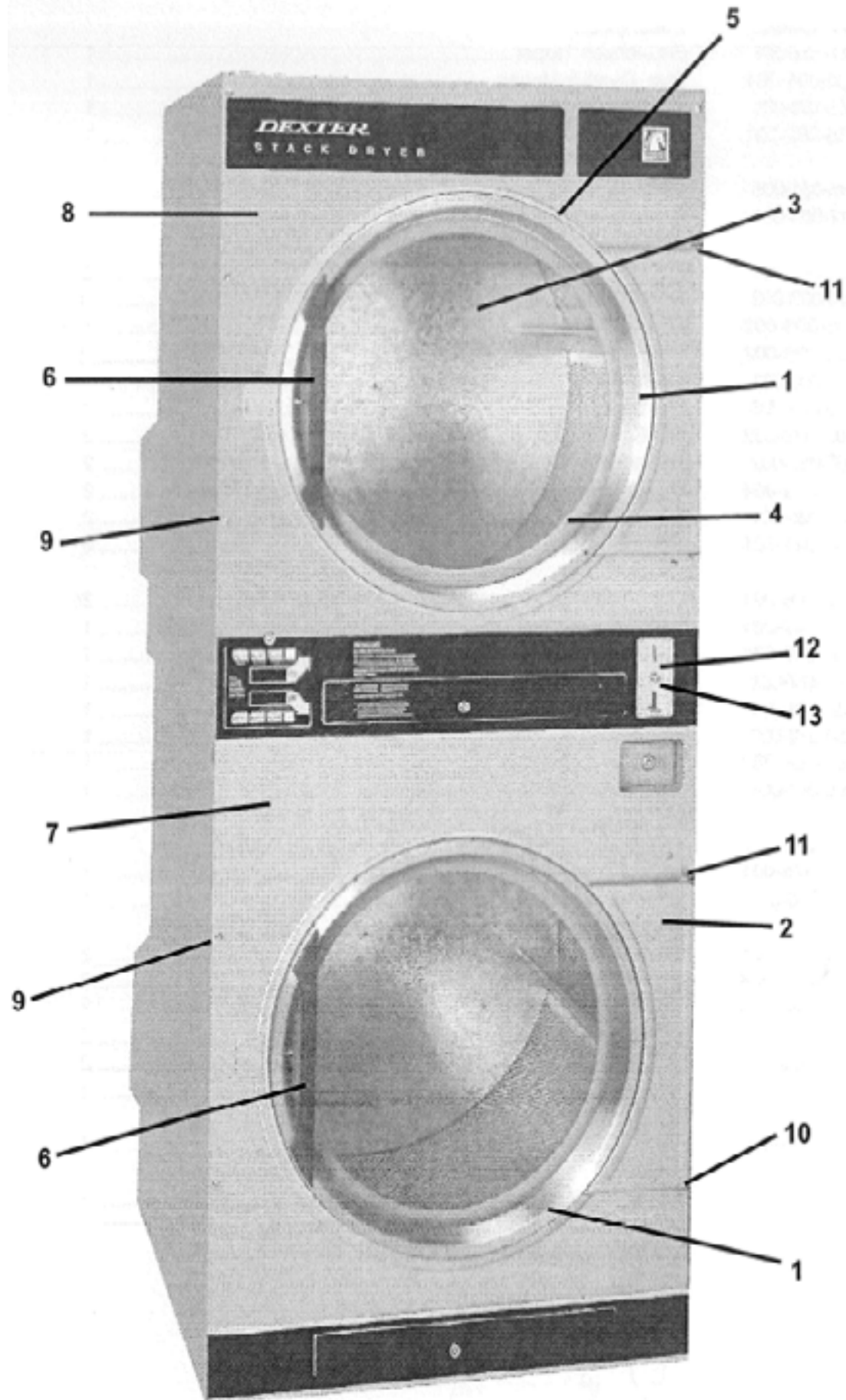
Symptom	Probable Cause	Suggested Remedy
<b>Tumbler turns, ignition sparks, no flame</b>	Gas supply	Make sure gas supply is working.
	Gas pressure	Make manometer check of gas pressure. Adjust if necessary.
	Spark electrode	Check for damage to electrode or mounting. Replace if necessary.
	Gas valve	Check coil continuity, replace valve if failed.
<b>Slow drying</b>	Temperature Setting	Check program for correct high temperature setting. Adjust if necessary.
	Air flow restrictions necessary	<ol style="list-style-type: none"> <li>1. Check lint screen and clean if necessary.</li> <li>2. Check exhaust for correct length and clean if necessary.</li> <li>3. Check exhaust damper to insure that it opens when dryer is running and closes when dryer is not in use.</li> <li>4. Check makeup air to insure that it is adequate. Increase makeup air if necessary.</li> </ol>
	Temperature sensor	Clean or replace temp sensor if necessary.

Symptom	Probable Cause	Suggested Remedy
<b>Erratic display</b>	Initial start-up	If erratic on initial start-up, leave power on for approximately one hour and check machine operation again.
	Grounding	Machine must be grounded by separate conductor back to neutral bar in breaker box.
	Program	Check program and make corrections if necessary.
	Voltage spike	Power down machine for 20 seconds and repower. If no improvement, replace control.



# Parts Data

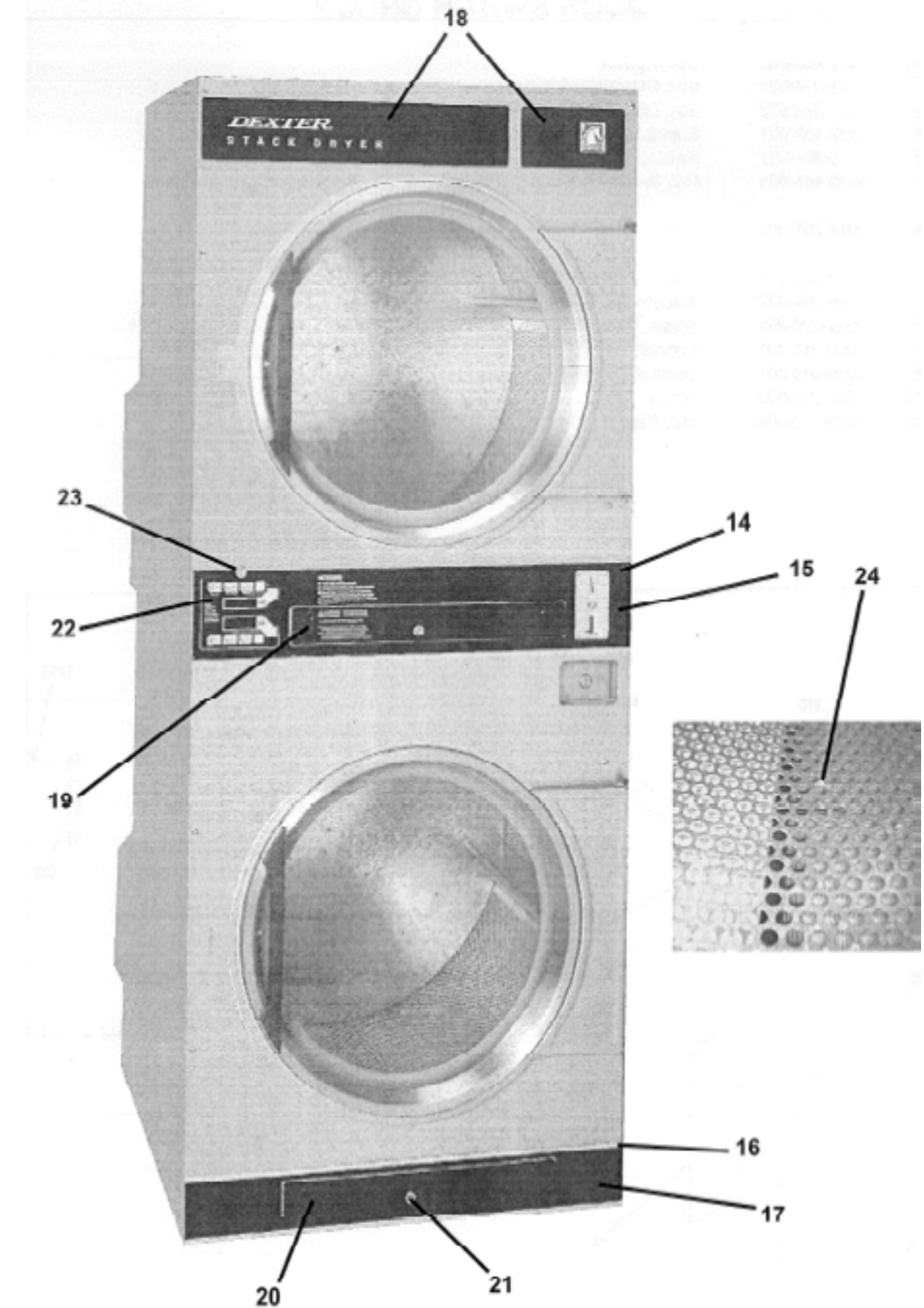
## Cabinet Group



Key	Part Number	Description	Quantity
*	9960-256-027	Door Assy., Loading Complete-Alm.....	2
*	9960-256-026	Door Assy., Loading Complete-Wht .....	2
*	9960-256-028	Door Assy., Loading Complete-HG.....	2
*	9960-256-030	Door Assy., Loading Complete-SS.....	2
1	9960-255-008	Door Assy., Loading-SS .....	1
2	9982-280-005	Plate Assy., Hinge (Alm).....	1
2	9982-280-002	Plate Assy., Hinge (Wht).....	1
2	9982-280-004	Plate Assy., Hinge (HG) .....	1
2	9982-280-011	Plate Assy., Hinge (SS) .....	1
*	9545-012-015	Screw, Hinge to Door .....	4
*	8640-413-002	Nut, Hinge to Door.....	4
3	9212-002-003	Glass, Door.....	1
4	9206-164-006	Gasket, Glass.....	1
*	9548-117-000	Support, Door Glass.....	1
5	9206-420-001	Gasket, Outer Rim. ....	1
6	9244-082-001	Handle, Loading Door.....	1
*	9545-018-017	Screw, Handle .....	4
*	9531-033-001	Stud, Door Catch. ....	1
*	8640-413-003	Nut, Acorn .....	1
*	8640-413-001	Nut, Hex.....	1
*	9086-015-002	Catch, Loading Door.....	1
*	9545-012-003	Screw.....	4
*	8641-582-006	Lockwasher .....	4
*	8640-399-001	Spring Nut.....	6
7	9989-445-016	Panel Assy., Front- Lower (Almond) .....	1
7	9989-445-018	Panel Assy., Front- Lower (White).....	1
7	9989-445-022	Panel Assy., Front- Lower (H. Gold).....	1
7	9989-445-024	Panel Assy., Front- Lower (S. Steel) .....	1
8	9989-445-015	Panel Assy., Front- Upper (Almond) .....	1
8	9989-445-017	Panel Assy., Front- Upper (White).....	1
8	9989-445-021	Panel Assy., Front- Upper (H. Gold).....	1
8	9989-445-023	Panel Assy., Front- Upper (S. Steel).....	1
9	9545-008-020	Screw, Chrome.....	14
9	8641-582-019	Lockwasher.....	6
*	8640-399-001	Nut, Spring.....	12
10	9544-047-005	Strap, Hinge (Almond).....	2
10	9544-047-002	Strap, Hinge (White) .....	2
10	9544-047-004	Strap, Hinge (H. Gold) .....	2
10	9544-047-007	Strap, Hinge (S. Steel).....	2
*	9545-008-020	Screw, Hinge to Panel .....	8
11	9545-052-001	Screw, Door to Hinge Strap.....	2
*	8641-436-003	Washer, Fiber.....	2
12	9021-001-010	Acceptor, Coin.....	1
*	9486-136-001	Retainer, Coin Acceptor. ....	1
13	9545-053-002	Screw .....	4
*	9732-126-001	Switch (for coin acceptor w/ extra acuator).....	1

## Cabinet Group Continued

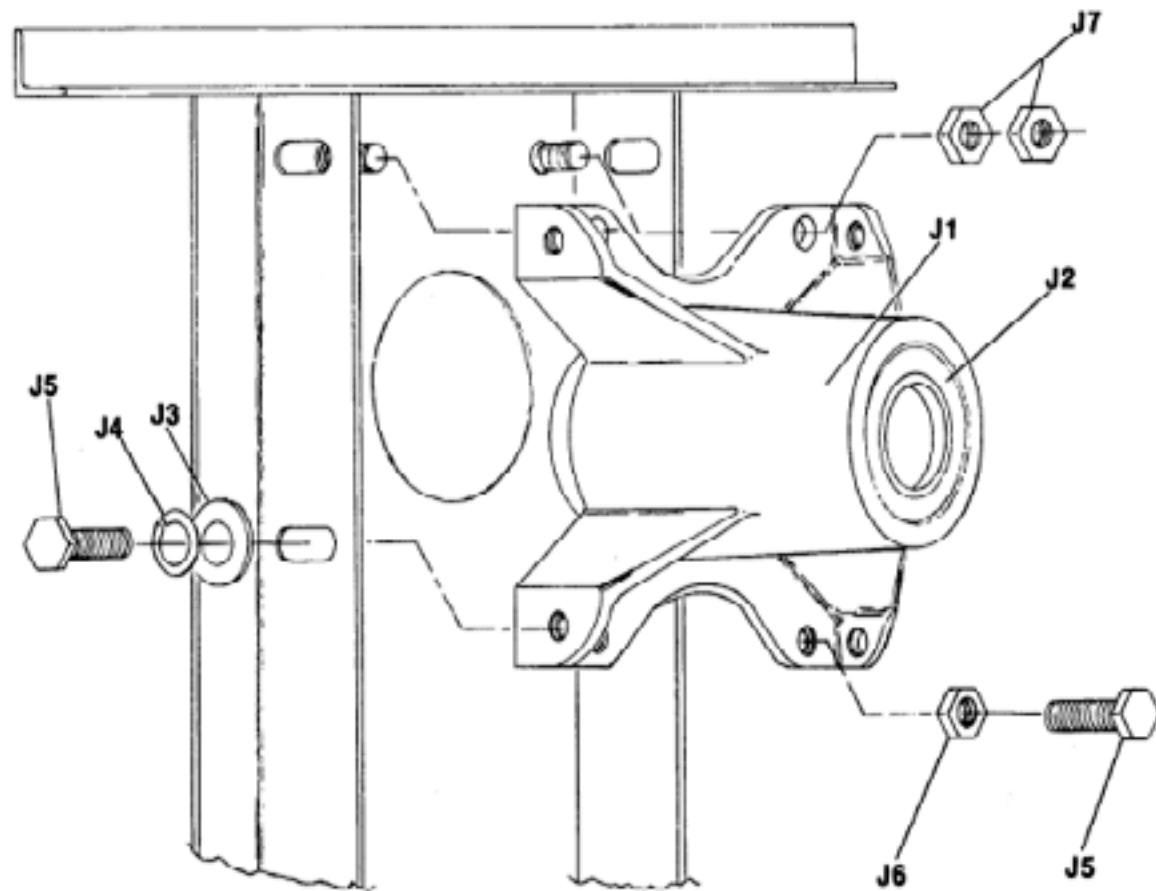
Key	Part Number	Description	Quantity
14	9141-152-001	Escutcheon, Upper .....	1
15	9435-001-001	Trim, Overlay-Upper. ....	1
16	9141-153-001	Escutcheon, Lower .....	1
17	9435-002-001	Trim, Overlay-Lower .....	1
*	9545-031-005	Screw.....	20
18	9412-084-001	Nameplate, Dex. Stack Dryer. ....	1
*	9029-042-001	Bracket, Lint Lock .....	2
19	9866-003-003	Drawer Assembly, Lint-Upper .....	1
19	9435-003-002	Overlay Trim, Lint Drwr-Upper.....	1
20	9866-003-002	Drawer Assembly, Lint-Lower. ....	1
20	9435-003-001	Overlay Trim, Lint Drwr-Lower.....	1
*	9532-074-003	Felt Seal (back of lint screen assembly) .....	2
*	9805-029-002	LINT SCREEN ASS'Y .....	2
21	8650-012-004	Lock and Key, Lint Drawer .....	2
*	9306-025-001	Key .....	
*	9095-041-001	Cam, Lock .....	2
*	9545-008-001	Lint Screen Strap Hold Down Screw 10-32x1/4 .....	28
22	9857-147-001	Controls Assy, Electronic Mounted with Membrane Switch .....	1
22	9801-059-004	Membrane Switch Assy. ....	1
*	9627-677-001	Harness Electronic Control. ....	1
*	9627-676-002	Harness Door Switch & Coin Switch.....	1
23	8650-012-003	Lock and Key, Control.....	1
*	6292-006-007	Key .....	
*	9095-041-001	Cam, Lock .....	1
*	8639-621-007	Screw, Green Grounding.....	1
*	9627-675-001	Harness, Heat Sensor. ....	1
*	8652-130-037	Terminal, Grounding .....	1
*	9985-175-001	Bracket Ass'y Heat Sensor.....	2
*	9501-004-003	Sensor Temp Control.....	2
*	9545-045-005	Screw, Round Head.....	2
*	8641-582-014	Lockwasher .....	2
*	9545-008-024	Screw HX Head Tapping (mounts bracket housing to dryer).....	2
*	9209-037-002	Grommet, 3/16 ID .....	2
*	8544-005-000	Leg, Leveling .....	4
*	9074-261-001	Cover, Cabinet. ....	1
*	9489-042-001	Baffle, Reinforcement .....	1





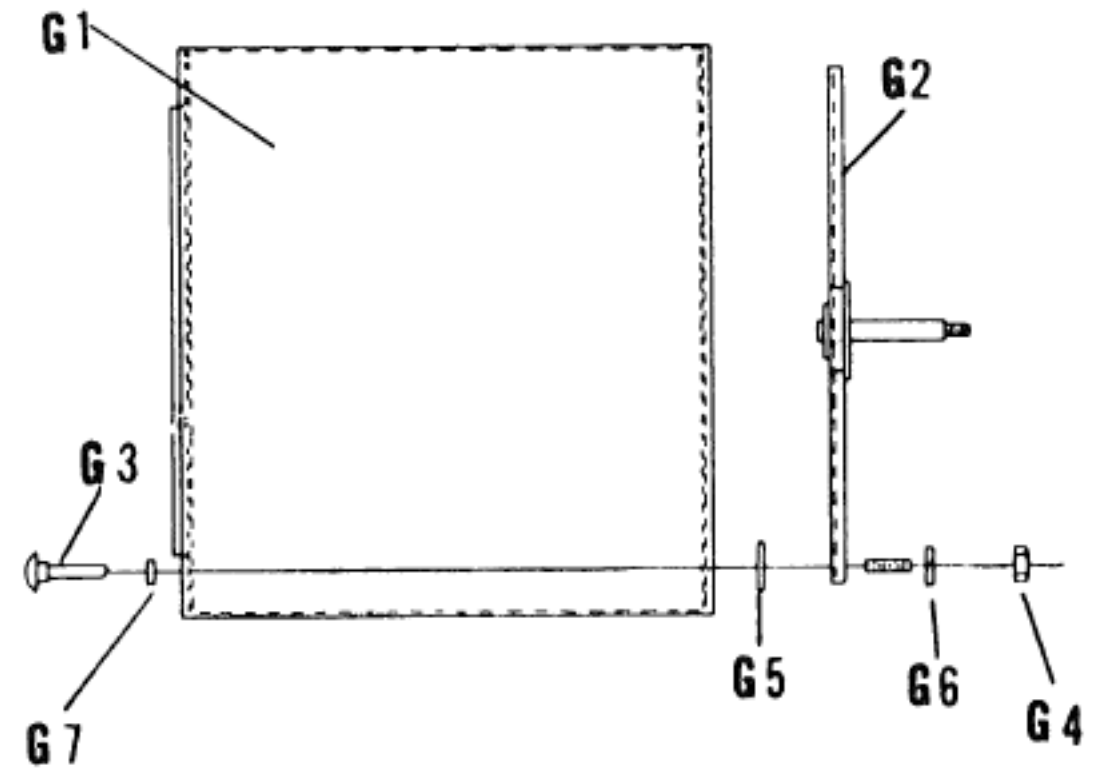
## Bearing Housing Group

Key	Part Number	Description	Quantity
J1	9241-161-002	Housing, Bearing.....	2
J2	9036-130-001	Bearing, Ball .....	4
*	9538-139-002	Spacer, Bearing.....	2
J3	8641-581-009	Washer, Flat .....	8
J4	8641-582-003	Lockwasher .....	8
J5	9545-049-001	Screw, 3/8 x 1.....	12
J6	8640-415-002	Nut, 3/8.....	4
J7	8640-400-002	Nut, 5/16.....	8



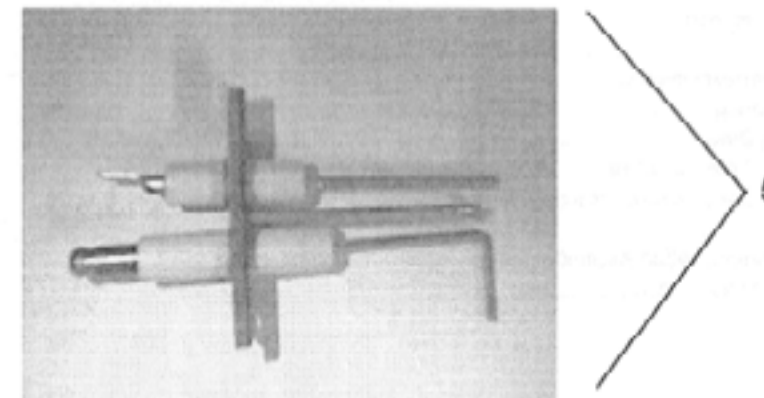
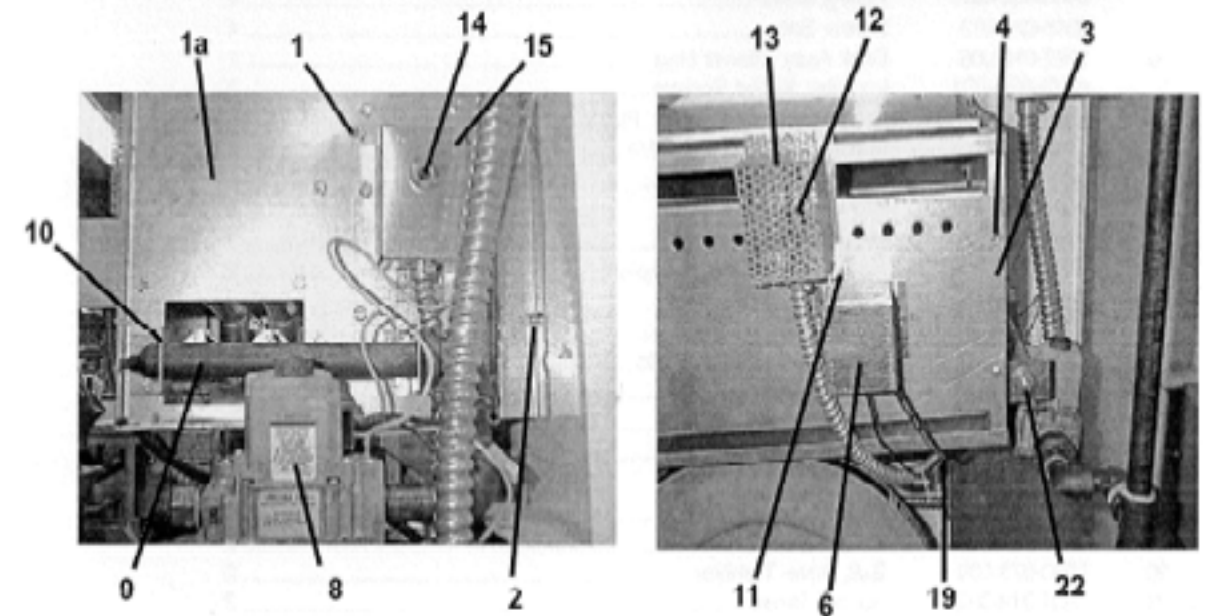
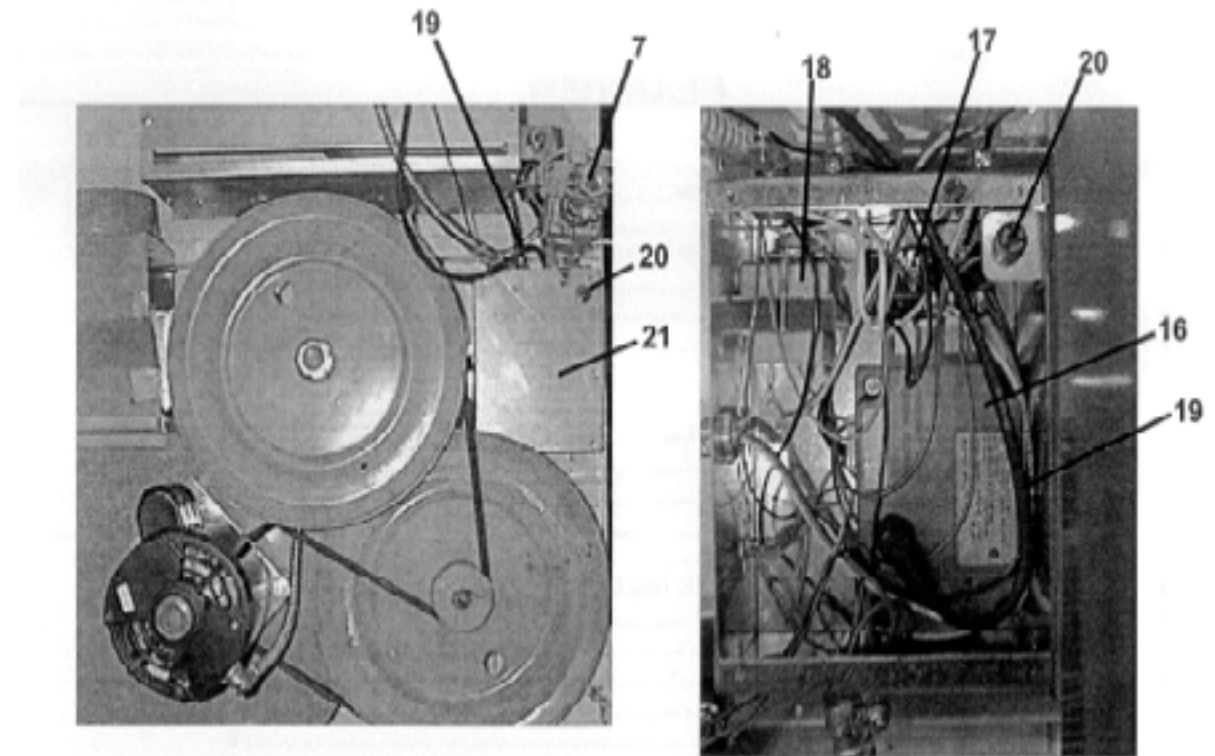
## Tumbler Group

Key	Part Number	Description	Quantity
G1	9848-112-001	Tumbler Ass'y. ....	2
G2	9568-009-005	Spider Ass'y.....	2
G3	9497-019-003	Rod, Tumbler. ....	6
G4	8641-415-001	Nut .....	6
G5	8641-582-003	Washer, Spring Lock.....	6
G6	8641-554-001	Washer, Special.....	6
G7	9552-013-000	Shim .....	AR



# Burner Housing Group

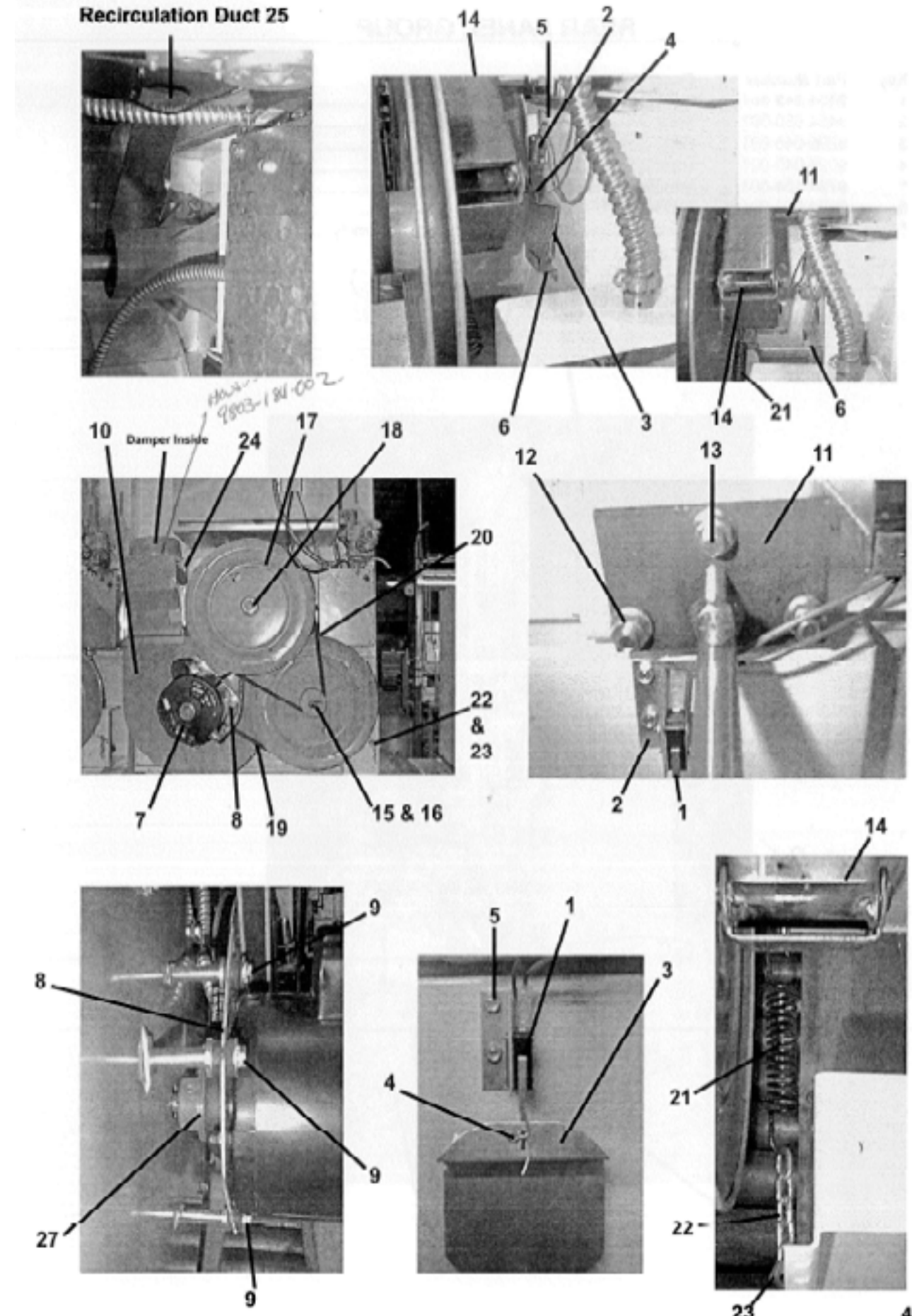
Key	Part Number	Description	Quantity
*	9803-185-001	Housing Assembly, Burner	2
1a	9454-641-001	Left Burner Plate (burner side with cleanout)	2
1	9452-696-001	Service Cover Plate for overtemp reset	2
*	9545-008-006	Screw	8
2	9545-008-001	Screw	12
*	9003-220-001	Angle, Burner Support	2
*	9545-008-006	Screw	4
*	9048-020-001	Burner, Main	4
*	9545-008-006	Screw	4
3	9454-645-001	Panel, Back Burner Housing	2
4	9545-008-001	Screw	8
5	9875-002-002	Electrode Assy, Ignition	2
*	9545-045-001	Screw, Electrode Mtg	4
6	9550-172-001	Shield, Ignitor Terminals	2
7	9379-186-001	Valve, Gas Shut Off	1
8	9857-134-001	Control Assy, Gas	2
9	9381-009-001	Manifold, Assy	2
*	9425-069-009	Orifice, Burner-Natural	4
*	9425-069-008	Orifice, Burner-LP	4
10	9029-047-001	Bracket, Manifold	2
*	9039-915-001	Bracket, Inlet Pipe	2
11	9452-615-001	Plate Assy, Hi-Limit Stat	2
*	9545-008-006	Screw	4
12	9576-203-002	Thermostat, Hi-Limit	2
*	9538-142-001	Spacer, Hi-Limit Stat	4
*	9545-045-007	Screw	4
13	9074-234-001	Cover, Hi-Limit Stat	2
*	9545-008-006	Screw	6
14	9576-207-008	Thermostat, Safety Shutoff	2
*	9545-008-006	Screw	4
15	9825-057-002	Cover, Safety Stat	2
*	9545-008-006	Screw	4
16	9857-116-002	Control, Ignition	2
*	9545-031-006	Screw	4
17	9897-026-001	Terminal Block	2
*	9545-031-004	Screw	4
18	8711-002-001	Transformer, Control	2
*	8640-397-002	Nut, Conduit	2
*	9039-915-001	Bracket	2
*	9545-008-006	Screw	4
19	9631-403-002	Wire, Hi Voltage	2
*	9627-678-001	Harness, Low Voltage Ignition	2
20	9200-001-002	Fuseholder	2
20	8636-018-001	Fuse	2
21	9074-263-001	Cover, Ignition Control, Lower Box	1
*	9545-008-006	Screw	8
*	9550-173-001	Shield, Burner Inlet	1
22	8615-104-038	Pipe Plug In (end of burner manifold)	2
*	9732-102-002	Kit, LP Conversion	2



# Rear View

Key	Part Number	Description	Quantity
*	9801-060-001	Switch Assembly, Air Flow .....	2
1	9539-461-009	Switch, Air Flow .....	2
2	9029-044-001	Bracket, Switch- Air Flow .....	2
3	9008-007-001	Actuator, Switch.....	2
4	9451-169-002	Pin, Cotter.....	2
5	9545-020-001	Screw .....	4
*	8640-401-001	Nut, Special Twin .....	2
*	9550-169-003	Shield, Switch .....	2
6	9029-046-001	Bracket, Actuator Stop .....	2
*	9545-008-001	Screw .....	4
7	9376-296-002	Motor, Drive .....	2
*	9732-205-003	Motor Replacement Kit.....	
*	5191-106-001	Motor Start Capacitor.....	1
8	9452-619-001	Plate, Motor Mtg .....	8
*	8640-413-002	Nut, Motor to Plate .....	8
9	9545-018-019	Screw, Motor Plate to Housing Back .....	8
9	8641-582-007	Lockwasher .....	8
9	9538-163-006	Spacer .....	8
9	8641-581-017	Flat Washer.....	24
9	9209-086-002	Rubber Grommet .....	8
*	9538-166-006	Grommet Spacers .....	8
27	9453-157-001	Pulley, Motor.....	2
*	9545-028-013	Screw, Set.....	4
10	9962-010-006	Back Assy, Blower Hsg .....	2
*	9278-039-001	Impeller, W/Set Screws .....	2
11	9991-053-001	Support Assy, Intermediate Pulley.....	2
12	9545-029-010	Bolt Rd Hd 3/8-16x1 1/4 .....	6
13	9545-029-003	Bolt 3/8-16x1 1/2 .....	2
12	8640-415-004	Nut .....	6
12	8641-581-035	Washer, Flat .....	6
14	9861-022-001	[NEW] Tension Arm Assy.....	2
*	9861-015-001	Arm Assy, Short [OLD] .....	2
*	9001-049-002	Arm, Tension [OLD].....	2
16	9908-039-004	Pulley Assy, Intermediate .....	2
17	9908-040-001	Pulley Driven .....	2
*	9538-164-001	Spacer, Shaft.....	2
*	9306-006-000	Key, Tumbler Shaft.....	2
18	8640-222-000	Nut, Hex .....	2
18	8641-582-015	Washer, Lock.....	2
19	9040-077-001	Belt, Drive- Motor .....	2
20	9040-073-009	Belt, Drive- Tumbler .....	2
21	9534-319-002	Spring, Tension.....	2
22	9099-012-002	Chain, Tension .....	2
23	9248-022-002	Hook, Tension .....	2
*	9125-003-001	Damper.....	4
24	9451-146-004	Pin, Damper Hinge.....	4
*	8520-141-000	Nut, Spring.....	8
*	9208-048-001	Guard, Drive.....	2
*	9454-649-001	Panel, Drive Guard, RH.....	2
*	9989-444-001	Panel, Drive Guard, LH .....	2
*	9545-008 006	Screw.....	36
25	9973-029-001	Head Recirculation Assembly Duct .....	2
27	9453-161-002	Motor Pulley - Driver .....	

Recirculation Duct 25



## Rear Panel Group

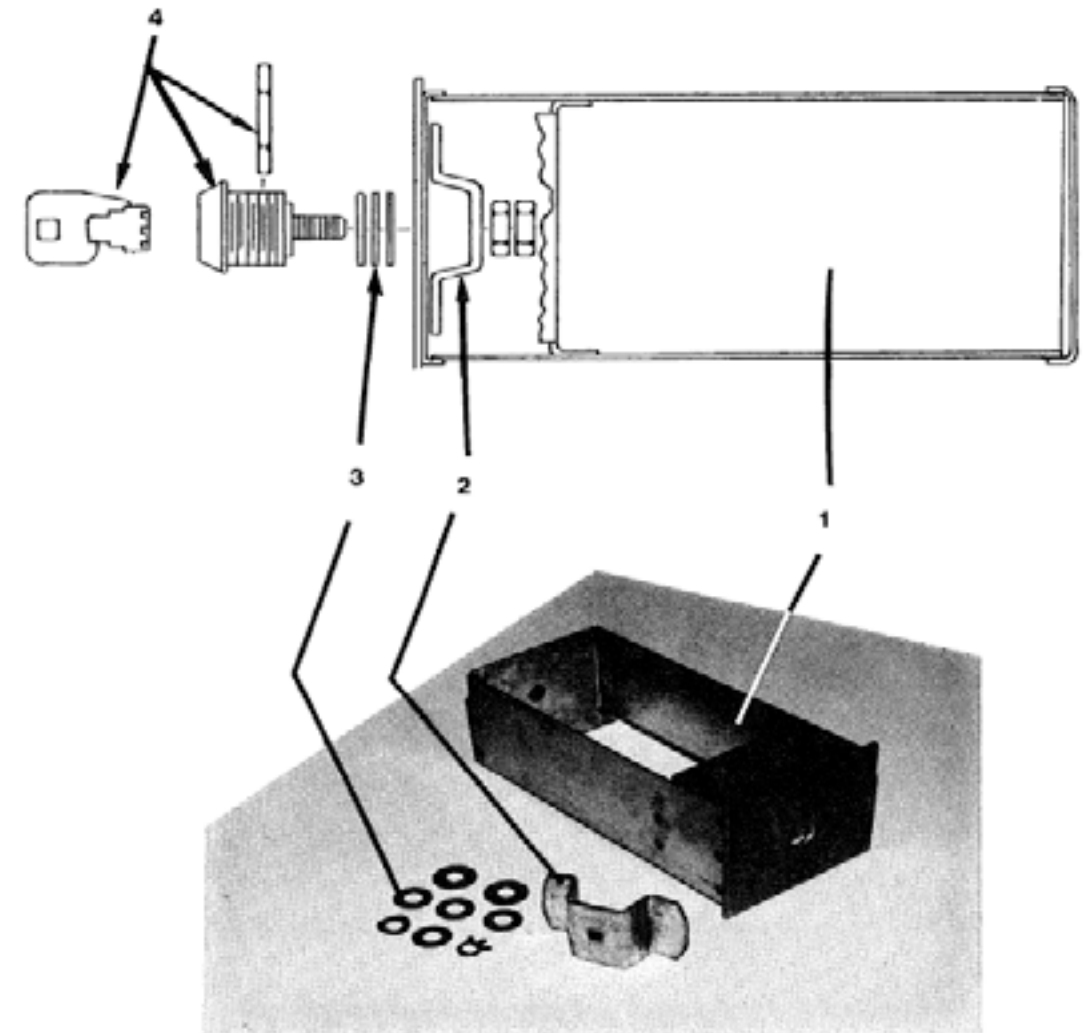
Key	Part Number	Description	Quantity
*	9454-649-001	Back Drive Guard Panel (righthand).....	2
*	9454-650-001	Back Drive Guard Panel (lefthand) .....	2
*	9208-048-001	Back Guard Drive .....	2
*	9029-049-001	Back Bracket Guard (lefthand) .....	2
*	9732-104-001	Vent Kit Offset Complete Transition .....	2
*	9074-261-001	Cabinet (TOP COVER) .....	1
*	9989-444-001	2 pcs. of Back Guard Panel (lefthand) Assembly.....	2
		(includes #4 & #2)	
*	9208-062-001	Motor Guard	

## Wiring Group

Key	Part Number	Description	Quantity
*	9627-685-002	Wiring Harness, Main.....	1
*	9627-676-002	Wiring Harness, Door Sw & Coins.....	1
*	9631-403-002	Wire, Hi-Voltage, Spark.....	2
*	9627-678-001	Wiring Harness, Low Voltage Ignition .....	2

## Coin Box Group

Key	Part Number	Description	Quantity
*	9732-122-011	Wiring Harness, Main.....	1
1	9807-077-007	Box Assy, Coin .....	1
2	9349-033-001	Latch, Coin Box.....	1
3	8641-581-008	Washer, Latch Spacer, Thick .....	2
3	8641-581-010	Washer, Latch Spacer, Thin .....	4
3	8641-569-002	Washer, Wave .....	1
3	8641-583-001	Washer, Special Keeper.....	1



---

# Section 6:

## Maintenance

---

## Maintenance

### Daily

1. Clean the lint screen free of lint and other debris. Use a soft brush and hot water if necessary.
2. Check the lint screen for tears. Replace if necessary.
3. Clean lint from the lint screen compartment.
4. Inspect felt seal on the lint screen assembly, replace if needed.

### Monthly

1. Remove lint accumulation from end bells of motor.
2. Remove lint accumulation from control area.
3. Remove lint and dirt accumulation from the top of the dryer and all areas above, below, and around the burners and burner housing. Failure to keep this portion of the dryer clean can lead to a build-up of lint creating a fire hazard.
4. Remove and clean coin acceptors. (Vended Models Only)

### Quarterly

1. Check belts for looseness, wear, or fraying.
2. Inspect gasket of door glass for excessive wear.
3. Check tightness of all fasteners holding parts to support channel.
4. Check tightness of all set screws.
5. Remove the air flow switch assembly and check the tumbler thru-bolts for tightness.
6. Apply a few drops of oil to pivot pins and the tension arms where in contact with each other.

### Semiannually

1. Remove and clean main burners.
2. Remove all orifices and examine for dirt and hole obstruction.
3. Remove all lint accumulation. Remove front panel, lint screen housing and remove lint accumulation.

### Annually

1. Check intermediate pulley bearings for wear.
2. Check and remove any lint accumulation from exhaust system including recirculation chambers if applicable.
3. Grease the bearings and the shaft of the intermediate pulley. Use an Alemite grease gun and Molykote BR2-S grease. (Where applicable)