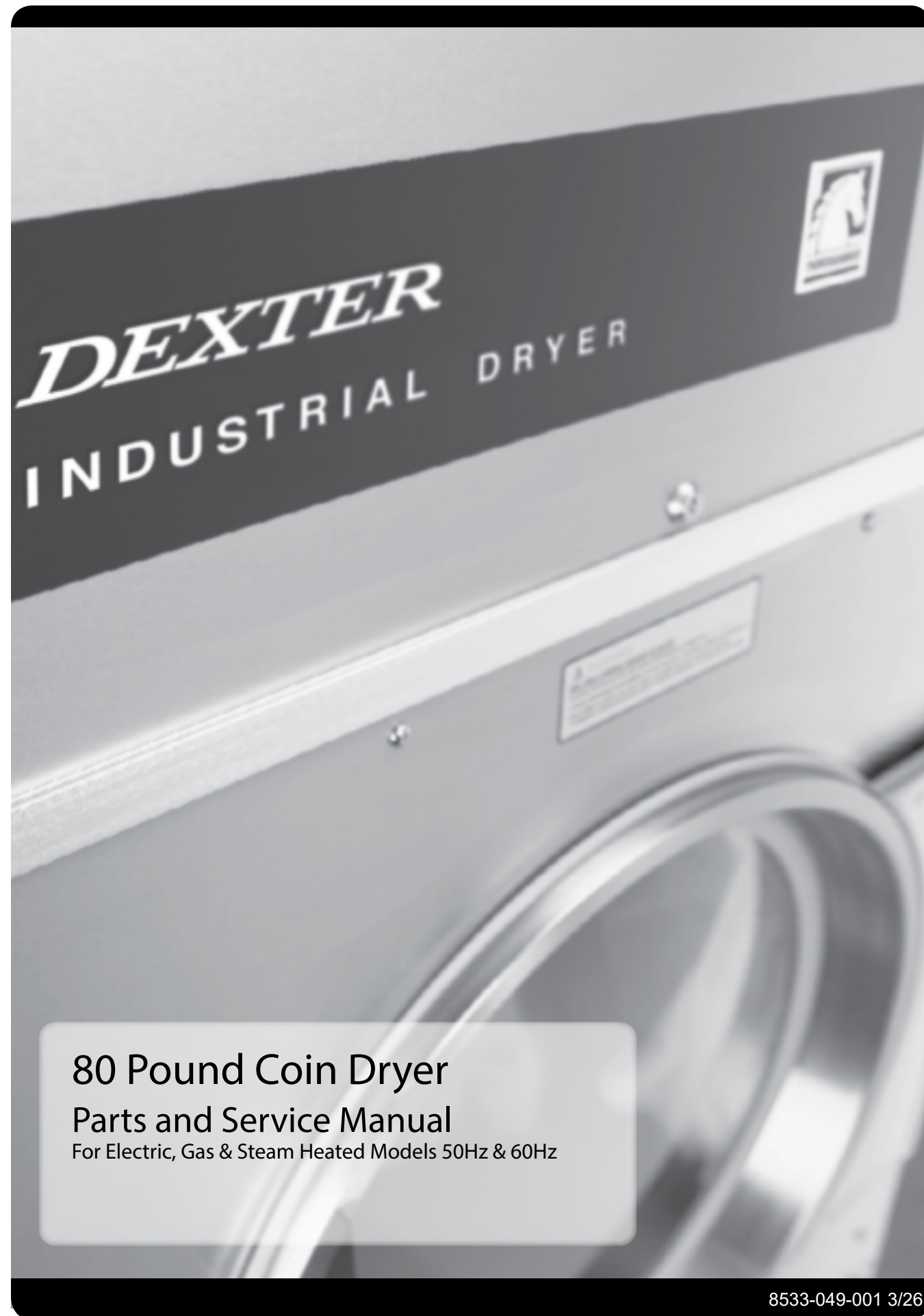




DEXTER[®]
LAUNDRY

**USE THE BLUE TABS LOCATED ON THE
RIGHT AND LEFT SIDES OF THE FOLLOWING
DOCUMENT TO ADVANCE TO EACH SECTION.**



80 Pound Coin Dryer

Parts and Service Manual

For Electric, Gas & Steam Heated Models 50Hz & 60Hz

8533-049-001 3/26

Dexter Safety Guidelines

! WARNING

The dryer must not be stored or installed where it will be exposed to water and/or weather.

For your safety the information in this manual must be followed to minimize the risk of fire or explosion or to prevent property damage, personal injury or death. Do not store or use gasoline or other flammable vapors and liquids in the vicinity of this or any other appliance.

WHAT TO DO IF YOU SMELL GAS

- Do not try to light any appliance.
- Do not touch any electrical switch: do not use any telephone in your building.
- Clear the room, building or area of all occupants.
- Immediately call your gas supplier from a neighbor's telephone.
- Follow the gas supplier's instructions.
- If you cannot reach your gas supplier, call the fire department. Installation and service must be performed by a qualified installer, service agency or the gas supplier.

To activate your warranty, be sure to return your red warranty form to the factory. Please have serial number and model ready when calling for assistance.

You, the purchaser, must post in a prominent location instructions to be followed in the event the user smells gas. Consult your local gas supplier for procedure to be followed if the odor of gas is present.

Post the following "For Your Safety" caution in a prominent location:

FOR YOUR SAFETY

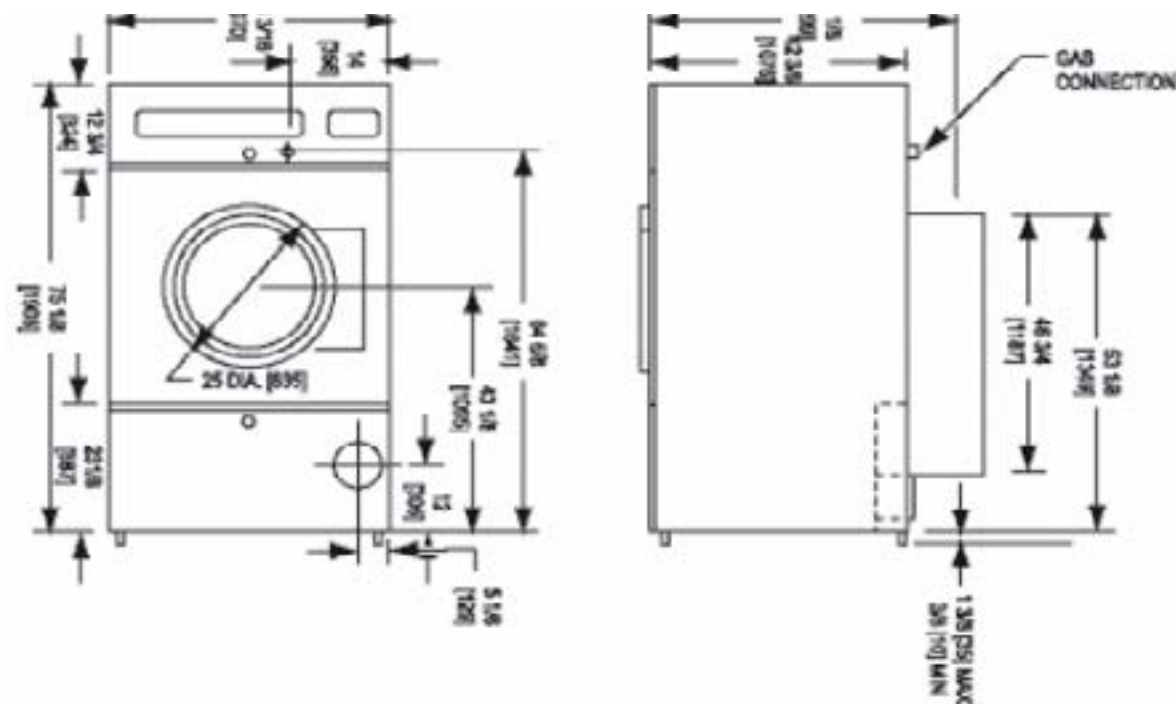
Do not store or use gasoline or other flammable vapors or liquids in the vicinity of this or any other appliance.

THIS MACHINE IS FOR DRYING ONLY FABRICS CLEANED IN WATER.

To avoid possibility of fire, including spontaneous combustion, do not dry oiled floor mops, items containing foam rubber or similarly textured rubberlike materials or any material on which you have used a cleaning solvent or which contains flammable liquids or solids (such as gasoline, kerosene, waxes, etc.)

Specifications for below models
are outlined in this book:

Mounting Dimensions



Section 1:
Specifications

Model DTCK80

Computer Controlled Coin Dryer

Capacity

Dry Weight Capacity	80 lbs	36.3 kg
Cylinder Diameter	36.5"	92.71 cm
Cylinder Depth	38"	96.52 cm

Dimensions

Cabinet Height (with feet)	75.13"	190.82 cm
Cabinet Width	38.44"	97.63 cm
Overall Depth	51.13"	129.86 cm

Electrical

Electrical Voltage (60 Hz)	120V, 208-240V
Electrical Running Amps (60 Hz)	10.8/120V/1 5.2/208-240V/1
Circuit Protection (60 Hz)	15 AMP
Motor Size	1 HP
Service	2 wires + ground
Micro Control	5 pre-programmed formulas

Gas Heat

Gas Input/Hour	215,000 BTU
Gas Supply Connection (NPT)	1/2" 1.27 mm
Temperature Control	Sensor

Installation

Air Flow	1200 CFM
Exhaust Size (Vent Diameter)	8" 20.32 cm
Net Weight	613 lbs 276.12 kg

Section 2: Installation & Operation

Section 2: Uncrating, Installation & Operation

Remove cardboard and innerpack.

Installation

All commercial dryer installations must conform with local applicable local codes or in the absence of local codes, with the National Fuel Gas Code ANSI Z223.1A-1988. Canadian installations must comply with current standard CAN/CGA-B149(.1 or .2) Installation Code for Gas Burning Appliances or Equipment, and local codes if applicable. The appliance, when installed, must be electrically grounded in accordance with the National Electric Code, ANSI/NFPA No. 70-1990, or when installed in Canada, with Standard CSA C22.1 Canadian Electrical Code Part 1.

Installation Clearances

This unit may be installed at the following alcove clearances.

1. Left side 0"
2. Right side 0"

*Units may be installed in direct contact with an adjacent dryer, providing allowance is made for opening upper & lower service doors.

3. Back 18" (certified for 1" clearance; however 18" behind the guard is recommended to clean, service & maintain the dryer)
4. Front 48" to allow use of dryer.
5. Top Certification allows 0" clearance at the top from the front back 1". However, a 1/2" clearance is required to allow opening the upper service door. A 4" clearance is required at the top between 1" & 4" from the front.

A 10" clearance is required from the top at all other points.

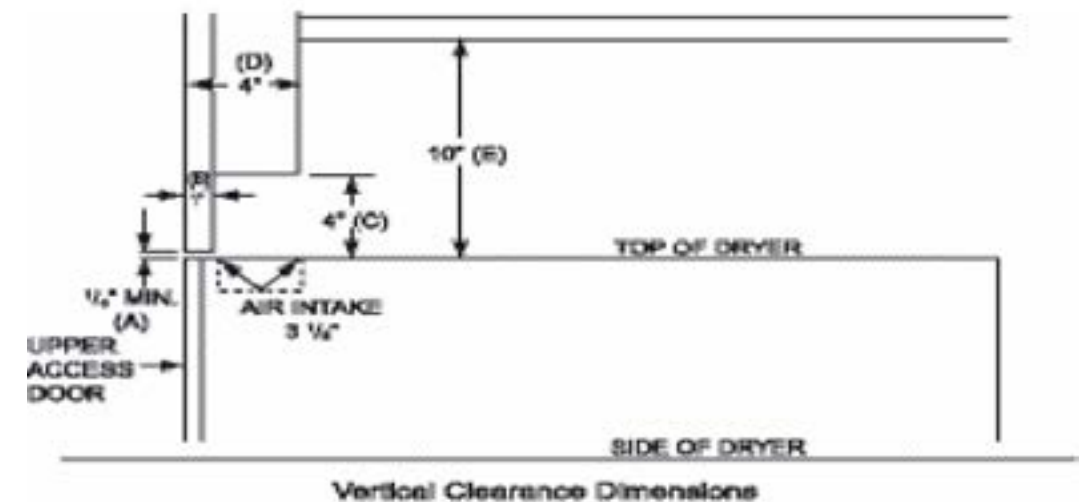
6. Floor. This unit may be installed upon a combustible floor.

Make-up Air

Adequate make-up air must be supplied to replace air exhausted by dryers on all types of installations.

Provide a minimum of 1.5 square foot of make-up air opening to the outside for each dryer. This is a net requirement of effective area Screens, grills or louvers which will restrict the flow of air must be considered. Consult the supplier to determine the free area equivalent for the grill being used.

The source of make-up air should be located sufficiently away from the dryers to allow an even air flow to the air intakes of all dryers. Multiple openings should be provided.



NOTE: The following considerations must be observed for gas dryer installations where dry cleaners are installed. The sources of all make-up air and room ventilation air movement to all dryers must be located away from any dry cleaners. This is necessary so that solvent vapors will not be drawn into the dryer inlet ducts. Dry cleaner solvent vapors will decompose in contact with an open flame such as the gas flame present in clothes dryers. The decomposition products are highly corrosive and will cause damage to the dryer ducts and clothes loads.

ELECTRICAL REQUIREMENTS

240 Volts, 60 Hertz, 1 Phase, 2 Wire Plus Ground

THIS machine was factory wired and tested at this voltage. If hookup to another voltage is required, refer to wiring diagram, schematic and the instructions below.

208 Volts, 60 Hertz, 1 Phase, 2 wire Plus Ground

FOR Connection to a 208 volt, 60 hertz, 1 phase supply, move the wire on the control transformer from the 240 volt terminal to the 208 volt terminal.

120 Volts, 60 Hertz, 1 Phase, 2 Wire Plus Ground

FOR Connection to a 120 volt, 60 hertz, 1 phase supply, move the wire on the control transformer from the 240 volt terminal to the 120 volt terminal. Move the number 3 end of the black jumper wire connecting terminal 3 and 4 on the terminal block so it now connects terminals 2 and 4. Move the number 5 end of the black jumper

WIRE connecting terminals 5 and 6 on there terminal block so it now connects terminals 3 and 6.

ELECTRICAL REQUIREMENTS

(REFER to schematic and wiring diagram). Incoming voltage can be 120v or 208-240 volt 1 PH. 60- Hz. The electrical power requirements necessary to operate the unit satisfactorily are listed on the serial plate located on the back panel of each dryer. The ELECTRICAL connection should be made to the terminal in the control box on the rear of the unit, using a wire size adequate to handle the amperage and voltage listed on the serial plate, but never smaller than No. 12 AWG wire. The ground lug must be connected to a good external ground. Individual circuit breakers for each unit are recommended. The schematic and wiring diagram are located on the belt guard on the back of the machine. The voltage is reduced to 24V for operating controls.

GAS REQUIREMENTS

THE Complete gas requirements necessary to operate the dryer satisfactorily are listed on the serial plate located on the back panel of the dryer. The inlet gas connection to the unit is 1/2 inch pipe thread. However, the size of the piping to supply the dryer should be determined by reference to the Fuel Gas Code and consulting the local gas supplier.

A JOint compound resistant to the action of liquefied petroleum gases should be employed in making pipe connections. A 1/8 inch NPT plugged tapping, accessible for test gage connection, must be installed immediately upstream of the gas supply connection to the dryer. A drip tee should be provided in the gas piping supplying the unit to catch dirt and other foreign articles. All pipe connections should be checked for leakage with soap solution or leak detector. Never check with an open flame.

PRESSURE TESTING

THE Dryer and its individual shutoff valve must be disconnected from the gas supply piping

system during any pressure testing of that system at test pressures in excess of 1/2 psig. The dryer must be isolated from the gas supply piping system by closing its individual manual shutoff valve during any pressure testing of the gas supply piping system at test pressures equal to or less than 1/2 psig.

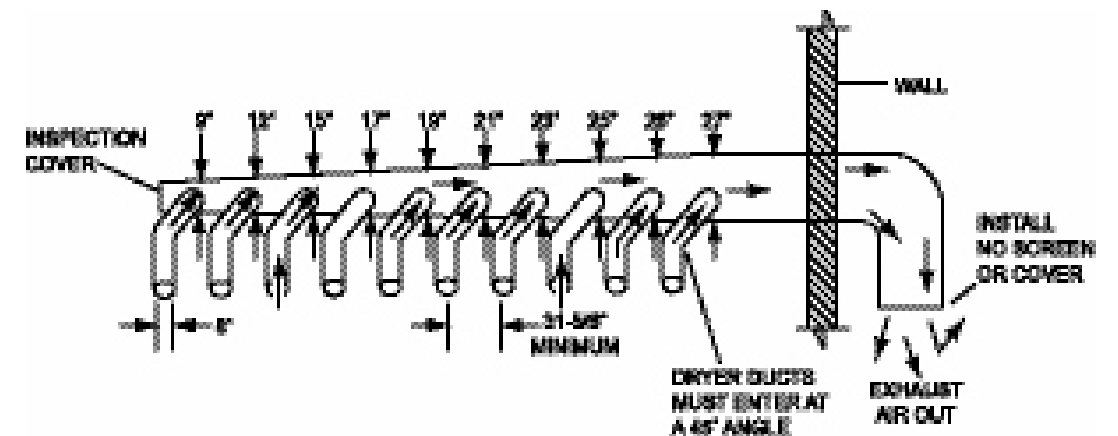
EXHAUST INSTALLATION

AN 8" diameter exhaust connection is required. Exhausting of the dryer should always be planned and constructed so that minimum air restrictions occur. Any restriction due to pipe size or type of installation can cause slow drying time, excessive heat, and lint build up in system and the room.

NOTE: From an operational standpoint, incorrect or inadequate exhausting can cause cycling of the high limit thermostat which shuts off the main burn- ers and results in inefficient drying.

NOTE: Individual exhausting of the dryer is recommended. All heat, mois- ture, and lint should be exhausted outside by attaching a pipe of the proper diameter to the outside by attaching a pipe of the proper diameter to the dryer adapter collars and extending it out through an outside wall. This pipe must be very smooth on the inside, as rough surfaces tend to collect lint which will eventually clog the ducts and prevent the dryer from exhausting properly. All elbows must be smooth on the inside. All joints must be made so the exhaust end of one pipe is inside the next one downstream. The ad- dition of an exhaust pipe tends to reduce the amount of air the blower can exhaust. This does not affect the dryer operation if held within practical lim- its. For the most efficient operation, it is recommended that no more than 20 feet of straight 8" diameter pipe with two right angle elbows be used for each cylinder. When more than two elbows are used, two feet of straight pipe should be removed for each additional elbow. No more than four right angle elbows should be used to exhaust each cylinder.

NOTE: If the exhaust pipe passes through a wall, a metal sleeve of slight- ly larger diameter should be set in the wall and the exhaust pipe passed through this sleeve. This practice is required by some local codes and is rec- ommended in all cases to protect the wall. This type of installation should have a means provided to prevent rain and high winds from entering the exhaust when the dryer is not in use. A hood with a hinged damper can be used for this purpose. Another method would be to point the outlet end of the pipe downward to prevent entrance of wind and rain. In either case, the outlet should be kept clear by at least 24" of any objects which would cause air restrictions.



DRYER OPERATION Computer Dryer Only

NOTE: Never install a protective screen over the exhaust outlet.

NOTE: When exhausting a dryer straight up through a roof, the overall length of the duct has the same limits as exhausting through a wall. A rain cap must be placed on top of the exhaust and must be of such a type as to be free from clogging. The type using a cone shaped "roof" over the pipe is suitable for this application.

NOTE: Exhausting the dryer into a chimney or under a building is not permitted. In either case there is a danger of lint build-up which can be highly combustible.

NOTE: Installation of several dryers where a main discharge duct is necessary, will need the following considerations for installation. Entrance into the main discharge duct should be at a 45 degree angle in the direction of discharge air flow.

NOTE: Never install the 8" ducts at a right angle into the main discharge duct. The following illustration shows the various round main duct diameters to use with the individual dryer ducts. The main duct can be rectangular or round, provided adequate air flow is maintained. For each dryer the total exhausting (main discharge duct plus duct outlet from the dryer) should not exceed the equivalent of 20 feet and two elbows. The diameter of the main discharge duct at the last dryer must be maintained to exhaust end.

NOTE: A small diameter duct will restrict air flow, a large diameter duct will reduce air velocity, both contributing to lint build up, An inspection door should be provided for periodic clean-out of the main duct.

Dryer Shutdown

To render the dryer inoperative turn off the main gas shut-off valve and disconnect power to the dryer.

Description of Electronic Control

The single electronic control unit controls the coin count, dry time, temperature and informatipn display. The digital display shows vend price when waiting for coins to be inserted and time purchased after coins have been deposited. When the tumbler is in use, the display shows the number of minutes remaining to be used. The three temperature selection buttons have indicator lights to indicate which temperature selection has been made. At the end of the cycle, the digital display flashes until the operator opens the door to remove the load. Temperature readout is available by pressing the temperature selection button that is in use along with the start button.

Electronic Control Features Available (shown in picture below)

1. Anti-Wrinkle

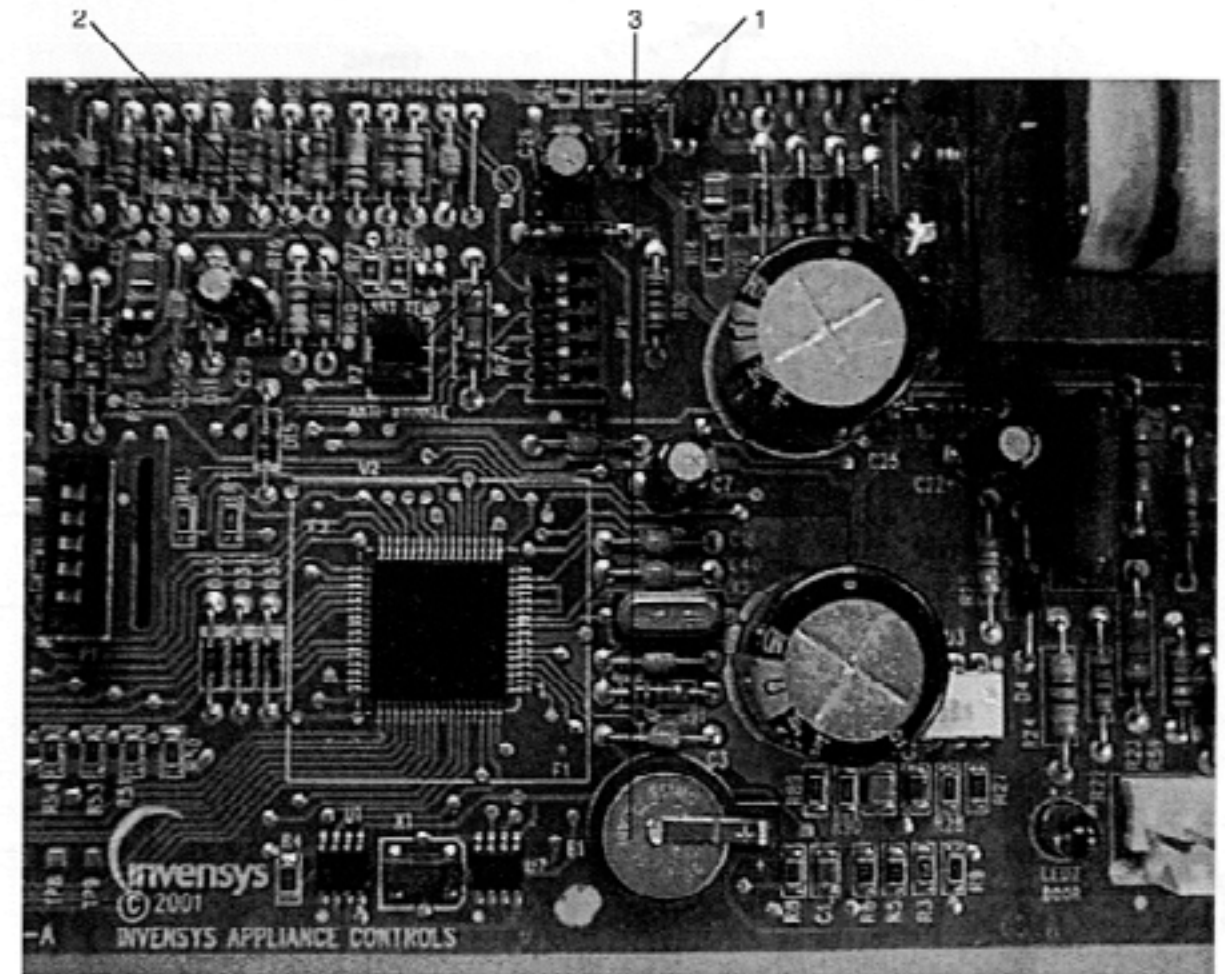
After a dryer has completed its dry time, the dryer will tumble intermittantly without heat, until the door is opened. This is to reduce wriokling of the clothes. This feature may be selected by removing a jumper from the electronic control.

2. Last Temperature Used

After a dryer has completed its dry time, the temperature that was being used will be selected for t.he next use, unless the new user selects a different one. This feature may be selected by removing a jumper from the electronic control.

3. Battery Back-up

All programmed and dry time remaining data are protected from power interruption by battery back-up.



OPERATING INSTRUCTIONS

1. Load clothes into the tumbler and close the door.
2. Deposit the vend price that is shown in the display.
3. Select the desired temperature. Temperature selection may be changed at any time during the cycle.
4. Push the start button to start the dryer.
5. Additional time may be purchased as long there is time remaining in the display, even if the amount added is less than the original vend price.

IMPORTANT: Opening the loading door will stop the dryer. However, the computer will continue to count down the time.

6. There is an owner programmable cool-down period at the end of the cycle. During the cool-down period, the dryer tumbles and the blower operates with the heat off to cool down the clothes.

PROGRAMMED DATA

All operating parameters (vend price, temperatures, cool-down times, etc.) are adjustable. In addition, several displays of information are available from the controller (money audits, hours run, & dryer temperature). Hour meter and money audit can be reset to zero. All of the following data can be easily changed by the owner. The changes are made by the four touch pad buttons on the front of the control panel. The dryer is ready to run, from the factory, with the following pre-programmed data:

Hour meter	0 hours
Money Audit	0 hours
Temperature, HOT	175 degrees
Temperature, PERM PRESS	150 degrees
Temperature, WARM	125 degrees
Skip (not used)	
Coin Value	25 cents
Vend Price	25 cents
Skip (not used)	
Time per coin	10 minutes
Time of Free Vend	10 minutes
Cool-down Time, HOT	2 minutes
Cool-down Time, PERM PRESS	2 minutes
Cool-down Time, WARM	2 minutes
Temperature	C or F

Programming Computer Control

ENTERING THE PROGRAM MODE

1. Unlock and open the upper service door.
2. Open the loading door.
3. Remove the metal plug found just to the left of the WARM cycle light.
4. Push the Program Button that is now accessible through a hole in the control mounting plate.
5. The control will switch to the Program mode.

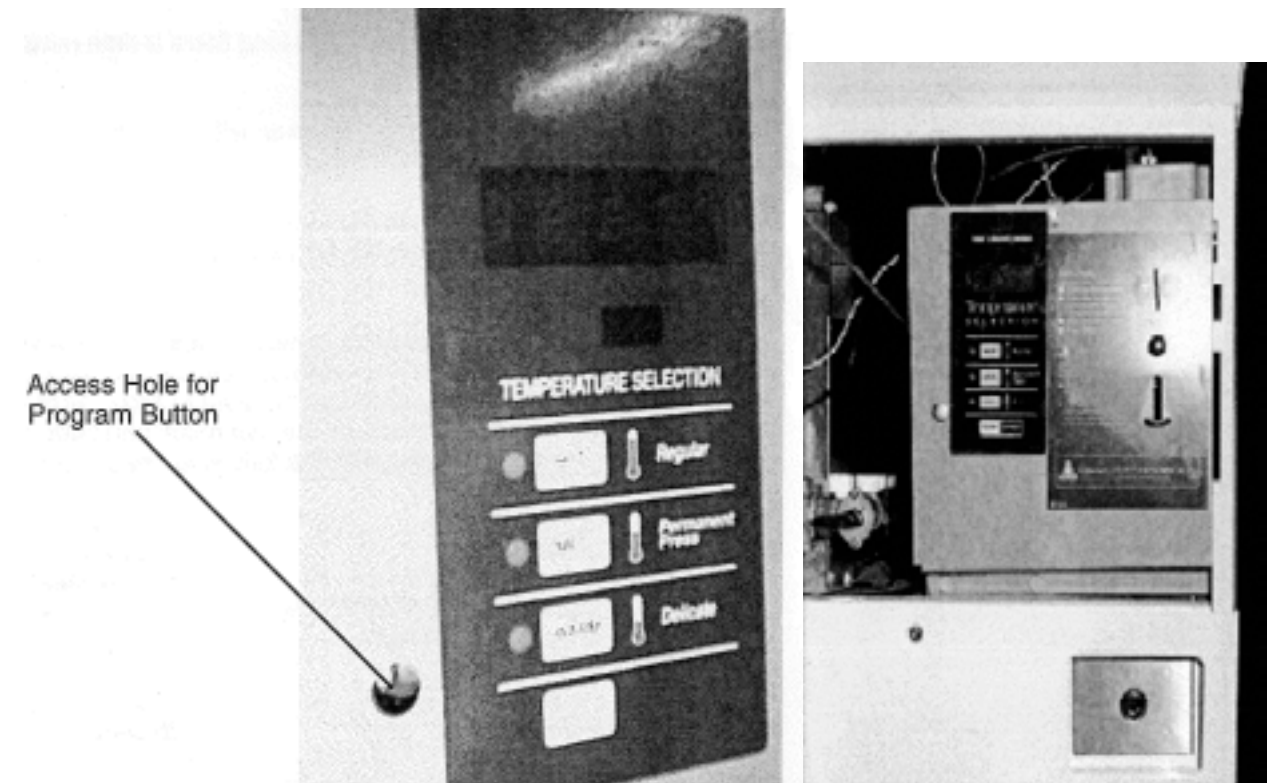
PROGRAMMING

1. The annunciator lights in the display and temperature lights identify each programming step. (Shown on following page.)
2. The START button advances the controller to the next programming step and stores any changes to the program in memory.

Important: Always remember to push START to store new data in the permanent memory. If you only change the display, the permanent memory hasn't been changed.

Always push START after any program change before exiting the program mode.

3. The HOT and PERM PRESS buttons increase and decrease the values in the display.
4. The WARM button zeroes the hour meter and coin audit in program steps 1 and 2. This button also restores the original factory settings for the step being displayed in program steps 3 through 15.



Order of Programming Steps

Cycle Lights	Display	Programming Step	Options/Range of Limits	Factory Settings
	<input type="text"/>	Hour meter	May be reset / 0 to 9999hr.	0
● H ● M ● W	<input type="text"/>	Left Coin Audit	May be reset / 0 to 9999 coins	0
● H ● M ● W	<input type="text"/>	Right Coin Audit	May be reset / 0 to 9999 coins	0
● H	<input type="text"/>	Temperature, Hot	150 to 190 degrees F (5 degrees increments)	175
● M	<input type="text"/>	Temperature, Perm Press	120 to 170 degrees F (5 degree increments)	150
● W	<input type="text"/>	Temperature, Warm	110 to 150 degrees F (5 degree increments)	125
	<input type="text"/>	Left Coin Value	0 to 100 cents (5 cent increments)	\$.10
	<input type="text"/>	Right Coin Value	0 to 100 cents (5 cent increments)	\$.25
	<input type="text"/>	Vend Price	0 to 100 (5 cent increments)	\$.25
	<input type="text"/>	Time for Left Coin	0 to 99:55 min. (5 sec. increments)	10:00
	<input type="text"/>	Time for Right Coin	0 to 99:55 min. (5 sec. increments)	10:00
	<input type="text"/>	Time of Free Vend	0 to 99:55 min. (5 sec. increments)	10:00
● H	<input type="text"/>	Cool-down Time, Hot	0 to 10 minutes (5 sec. increments)	2:00
● M	<input type="text"/>	Cool-down Time, Medium	0 to 10 minutes (5 sec. increments)	2:00
● W	<input type="text"/>	Cool-down Time, Warm	0 to 10 minutes (5 sec. increments)	2:00
	<input type="text"/>	Temperature Scale	Celsius or Fahrenheit	C or F

Exiting Program Mode

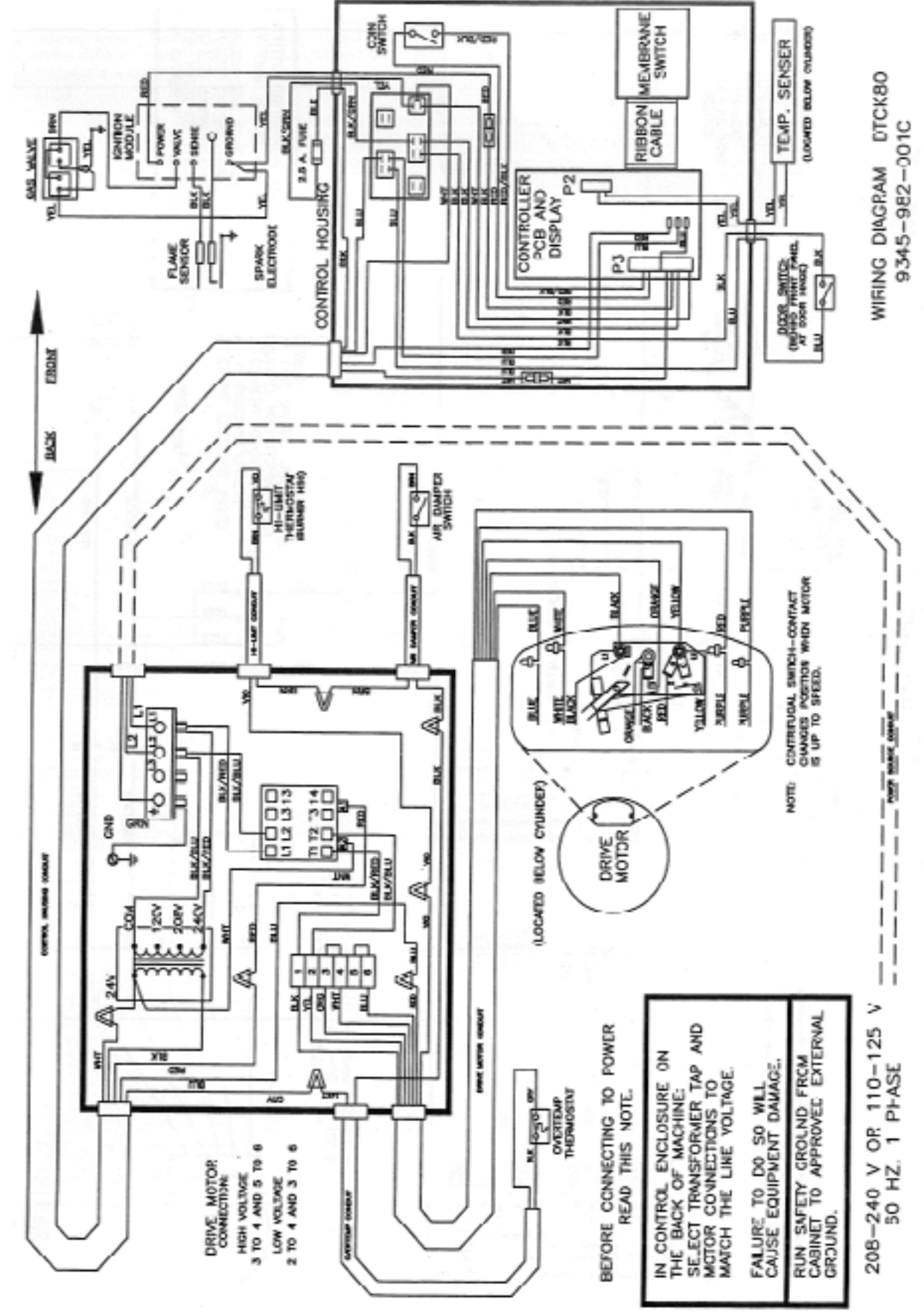
The controller remains in the programming mode until one of the following happens:

1. The Program Button is pushed again.
2. The last step of the programming sequence is completed and the step switch is pushed following this last step.
3. Programming is stopped for approximately one minute.
4. The loading door is closed.

Heat Circuit

The control transformer uses the incoming voltage (208-240v or 110-125v) on the primary side and steps it down to 24 volts on the secondary side of the transformer. The 24 volts is then sent through a 2.5 amp fuse on one side of the transformer and supplies power to the computer board on a black wire. 24 volts are also sent to the normally open door switch on a black wire and the centrifugal switch on a red wire. With the door shut, power is then supplied by the blue wire to the n.m relay on the computer board. The computer board then sends voltage to engage the motor relay. After the drive motor starts, the centrifugal switch moves to the run position disengaging the motor start winding and providing 24 volts to the normally closed high-limit thermostat on the violet wire. The 24 volts is then supplied to the normally open air damper switch on a brown wire. When the air damper switch is closed, 24 volts is sent to the normally closed over temperature safety thermostat on a black wire. The 24 volts is then sent on a gray wire through the gas relay on the computer board. The gas relay closes and 24 volts is supplied to the spark ignition module on a red wire. The spark ignition module sends a high voltage signal to the spark electrode for 10 seconds to light the burner. After approximately 10 seconds of purge time, power is applied to open the gas valve coils. When ignition occurs the high voltage spark stops. If ignition does not occur within 10 seconds, the spark ignition module will lock out closing the gas valve and stopping the spark. To reset the spark ignition module, the dryer loading door must be opened and the tumbler allowed to stop and remain stopped for 10 seconds.

Section 3: Wiring Schematics



Section 4: Service Procedures

Clothes Door Removal

STEP 1: The clothes door may be removed from the hinge bracket by unscrewing and removing the allen head pivot screw located at the door upper hinge point.

STEP 2: Next lean the door out of the top of the hinge bracket and lift the door from the bottom hinge pin.

Clothes Door Latch Adjustment

STEP 1: Loosen the lock nut on the latching stud. It is located directly behind the door handle.

STEP 2: Open the loading door.

STEP 3: Screw the door catch stud in or out as necessary and then retighten the lock nut.

Installation of Clothes Door Window & Gasket

STEP 1: Remove the loading door.

STEP 2: Place the clothes door, with its face down, on a solid surface.

Note: Pre-warming the gasket under a heat lamp makes the installation much easier.

STEP 3: Put the door glass gasket on the loading door with the ridges in the wide side up. Locate the seam at the door latching stud.

Note: The gasket has one narrow opening on one side and a wide opening on the other. The narrow side mounts to the door. The wide side holds the glass. The wide side has ridges on one interior lip. This ridged side should go up with the door laying face down.

STEP 4: Coat the inside and outside of the gasket with rubber lubricant or liquid soap.

STEP 5: Slide the glass into the middle of the gasket with half of the glass above the door and half below the door.

STEP 6: While pressing on the glass, use a modified screwdriver (grind the end off so that it is round and put a slight bend in it) and run it around half of the glass.

STEP 7: With half of the glass installed, turn the door over and repeat step 6.

STEP 8: Insert the modified screwdriver at the 6 o'clock position and pry the glass up enough to install the door glass support spacer (small diameter rubber tube).

Door Switch Removal & Installation

STEP 1: The door switch is located directly behind the hinge plate of the loading door assembly. Open the door for access to the switch area. Remove the two screws holding the switch cover in position. This will allow the removal of the cover and the switch actuator plate. between the thermostat and bracket which must be used to give proper operation.

STEP 2: The entire switch box can now be pulled from the front panel opening, creating access to the door switch mounting screws.

STEP 3: Remove these two mounting screws and twin nut which frees the door switch and insulating shield. Remove wires.

STEP 4: When installing the door switch make certain the insulating shield is reassembled.

STEP 5: The actuator plate and switch box cover should be assembled as illustrated in the parts section of this book.

Door Switch Operation & Testing

The normally open door switch must be closed (0 ohms resistance) for the motor and heat circuits to operate. When the door is opened, the door switch breaks the 24 volt control circuit.

Door Switch Adjustment

STEP 1: Remove the two switch box cover screws.

STEP 2: Remove the switch cover and actuator plate.

STEP 3: Pull the entire switch box out from the opening in the front panel.

STEP 4: Loosen the bottom door switch mounting screw.

STEP 5: A slotted mounting allows the switch to slide in or out for adjustment.

High Limit Thermostat Locations & Functions

Burner Housing

This hi-limit is located on the left side of the burner housing.

STEP 1: The thermostat opens the circuit to the main burners in the event of malfunction in the gas control area or temperature control. This thermostat will open quickly if there is a significant loss of air flow over the burner area.

STEP 2: It is covered by a guard and is held in place by two screws. There are spacers between the thermostat and bracket which must be used to give proper operation.

Manual Resettable Over Temperature Safety Thermostat

The second hi-limit thermostat is located outside the rear exhaust opening mounted on the exhaust recirculation duct at the rear outlet burner height.

STEP 1: The manually resettable thermostat limits the operating temperature a dryer can reach should some abnormal situation occur.

STEP 2: Should the thermostat be tripped, the dryer will cease to heat until the thermostat is reset. Once the dryer cools, the thermostat may be reset by inserting a pencil or stick through the opening in the thermostat cover and pushing the button in.

REMOVAL: To remove the manual resettable over temperature safety thermostat on the exhaust recirculation duct, remove cover mounting screws holding its respective guard. Next, remove the terminals of each wire attached to the thermostat. Lastly, remove mounting screws holding the thermostat to the recirculation boot.

Pressure Regulator Adjustment

Use the following procedure whenever it is necessary to check the pressure regulator setting. NOTE: Any adjustment of the pressure regulator must be made with a manometer attached at the plug in the main burner manifold.

STEP 1: Shut off the gas supply to the dryer.

STEP 2: Remove the 1/8" pipe plug from the end of the main burner manifold.

STEP 3: Attach a manometer to the manifold end.

STEP 4: Remove the pressure regulator cover screw on the gas valve.

STEP 5: Open the shut-off valve, and operate the dryer.

STEP 6: Adjust the pressure for a manometer reading of 3.5" water column gas pressure. (11.0" for L.P.)

NOTE: The main burners must be operating when adjusting the pressure regulator.

STEP 7: Shut off the gas supply to the dryer. Remove the manometer and install the 1/8" pipe plug in the manifold.

STEP 8: Open the shut off valve, start the dryer and check for gas leaks while the burners are ignited.

Front Panel Removal

To remove the front panel, first remove the loading door from the panel. Then remove the two left side screws and the four right side screws. The trim does not have to be removed. (The panel may be removed with the door left in place, although it is much heavier and more awkward to do so.)

NOTE: Always remove power from the machine before changing drive belts or working with the drive and fan system.

Final Drive Belt Replacement

To replace the final drive belt turn the cylinder slowly by hand and work the belt off of the large pulley.

Motor Drive Belt Replacement

To replace the motor drive belt the final drive belt should be removed as above. Next turn the intermediate drive pulley and work the belt off of it similarly to the above belt.

Blower Impeller Removal

Remove the lint hood that is located inside the lower service door. Take notice of the location of the impeller location on the shaft. Remove the two set screws that hold the motor to the shaft.

Airflow switch removal and adjustment

The air switch assembly is part of the ignition safety circuit and insures that the burner doesn't operate unless there is airflow. If this doesn't happen, ignition will not occur. The air switch assembly is located inside the lint compartment on top of the blower housing.

Electronic Ignition Module

This machine uses an electronic spark ignition system to directly light the burners.

STEP 1: The electronic ignition module (gray box) is located inside the upper access door in the control box.

STEP 2: The red wire from the transformer provides 24 VAC through the 1.5 amp fuse and into the module to operate the entire direct ignition system.

STEP 3: The black colored hi-voltage wire (spark plug type) plugs onto the post connector on the module, and the multi-wire plug fits into the side of the module.

Spark Electrode Assembly-Removal

STEP 1: Remove electrode cover and disconnect wires to electrodes.

STEP 2: Remove two screws to detach electrode assembly.

NOTE: Proper grounding of the ignition system (yellow wires) is very critical for proper ignition sequence

If there is no spark or intermittent spark, check black hi-voltage lead wire for damage or cracks in insulation. *This lead wire must not be taped or connected to any metal edges along its length to prevent pinching and arcing. Also, do not bundle this wire with other wires.*

NOTE: Spark gap and electrode location are important. If the electrode is damaged or mounting is changed the spark gap may not be correct for ignition to occur. Check for cracks in the ceramic insulator. Replace electrode assembly if necessary. Also check for carbon or foreign material on the electrodes and clean if necessary.

Gas Valve & Manifold Removal

STEP 1: Disconnect union at gas valve and disconnect wires from gas valve operator coils.

STEP 2: Remove right manifold mounting bracket screws and slide manifold to remove from left bracket.

Spark Electrode Assembly-Function

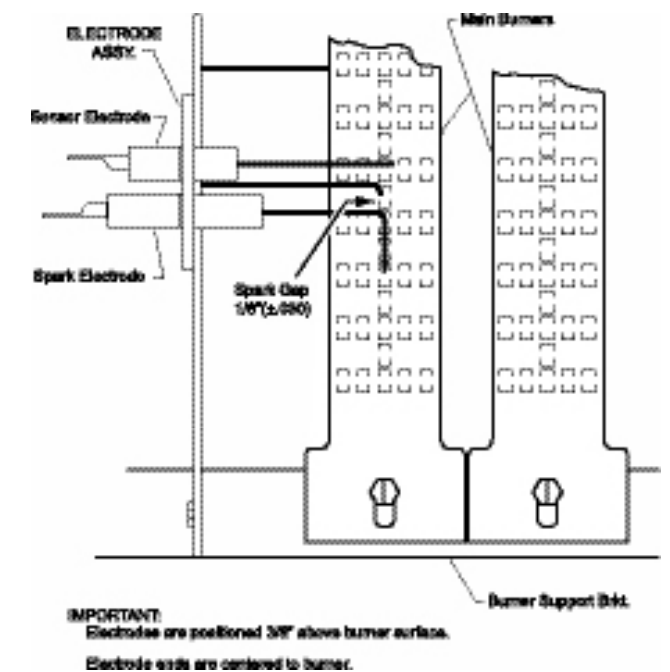
1. The spark electrode and sensing electrodes are located directly at the side of the burner housing.
2. The electrode with the black hi-voltage wire conducts the spark to the center grounding probe, directly over the burner.
3. The electrode with the black sensing wire detects ignition and monitors flame by signaling the module.

NOTE: Proper grounding of the ignition system (yellow wires) is very critical for proper ignition sequence.

Ignition System-Function & Sequence

During normal dryer operation, the following occurs:

1. The dryer electronic control calls for heat.
2. From the 24VAC control transformer, voltage for the heat circuit is applied to the control through the door switch. If the control detects that the heat should be on, a circuit is closed providing power through the over-temp thermostat, the air damper switch, the high limit switch and the motor centrifugal switch to the Ignition Module. Once the 24VAC reaches the ignition module on the red wire, sparking occurs at the ignition electrode and 24VAC is applied to open the Gas Valve.
3. Once the flame is established, the sensing electrode detects the presence of flame and the sparking stops.
4. If for any reason the flame is not established in a period of 10 seconds, the electronic control will try this sequence for 3 tries. Normally the 10 seconds "Trial For Ignition" period is ample to establish and prove flame.
5. If the flame is shutdown or blown out during operation, the ignitor will immediately go into "Trial. For Ignition" again for 10 seconds.
6. However, at the end of 3 separate retries of 10 seconds "Trial for Ignition", the flame is not established, the ignition system goes into "Safety Lock-Out" and will not reactivate the "Trial for Ignition" until there is a current interruption for a period of 15 seconds. This interruption can be provided by opening the dryer loading door and allowing the machine to come to a complete stop for 15 seconds.



Main Burner Orifice Removal

STEP 1: Remove manifold and gas valve assembly as above.

STEP 2: Using an open end wrench, remove orifices from manifold.

Main Burner Removal

Remove manifold & gas valve assembly as previously discussed. Remove the screw securing the front of the burner to the support bracket. The burner may now be removed.

Cylinder Pulley Removal

Remove nut holding pulley to cylinder shaft. Pull pulley straight off of shaft.

Intermediate Pulley Removal

The intermediate pulley can be removed by removing the snap ring holding the pulley to the tension arms.

Tension Arm Assembly Removal

The tension arm assembly may be removed by removing the snap ring that holds it to the tension arm support assembly pin. If it is necessary the arm assembly is replaced as a complete unit.

Tension Arm Support Assembly Adjustment

The tension arm support assembly may be adjusted for alignment of the intermediate pulley and also to align the belts. The three outer nuts allow the alignment of the pin to be adjusted by pivoting the assembly on the center bolt. The center bolt can be screwed in to allow bringing the complete assembly farther back if necessary for belt alignment.

Cylinder Removal

STEP 1: Remove the front panel in front of the cylinder.

STEP 2: Remove drive belt, nut, pulley, and shaft key.

STEP 3: Pull the cylinder from the front of the machine.

Adjustment of Cylinder Assembly

STEP 1: Loosen the two top adjusting bolts and two bottom adjusting nuts and lock nuts holding the bearing housing to the drive plate.

STEP 2: Loosen the four mounting bolts on the side channels.

STEP 3: Open the clothes door and insert a 1/2" thick shim at the 3 and 9 o'clock positions and a 1/4" thick shim at the 6 o'clock position.

STEP 4: Tighten the two bottom adjusting nuts and tighten locking nuts.

STEP 5: Tighten the bottom right mounting bolt, then the top left mounting bolt. Tighten the remaining two bolts. (Shim where and if necessary.)

STEP 6: Tighten the two top adjusting bolts.

STEP 7: Remove all the shims from between the front panel flange and cylinder (3,6,9 and 12 o'clock).

STEP 8: Spin the cylinder to check for rubbing baffles, pressing down hard while rotating. If rubbing is detected, repeat procedure paying particular attention to placement of shims between bearing housing and side channels.

Bearing Housing Removal

After removing cylinder as previously outlined, simply unbolt the bearing housing and remove.

SERVICE PROCEDURES

Computer Controls

Electronic Control Failure Codes

1. F1 - Shorted sensor or shorted sensor wire harness
2. F2 - Open sensor or sensor wire harness unplugged
3. F3 - Electronic control failure
4. F4 - Electronic control failure
5. F5 - Electronic control failure

WARNING B DISCONNECT ELECTRICAL POWER TO THE DRYER BEFORE PROCEEDING.

Electronic Control Removal

CAUTION: AS WITH ALL ELECTRONIC CONTROLS, THIS CONTROL CAN BE DAMAGED BY STATIC ELECTRICITY. ALWAYS HANDLE CONTROLS BY THE EDGES. NEVER TOUCH A CONTROL WITHOUT TOUCHING THE CABINET OF THE DRYER FIRST TO GROUND YOURSELF.

1. Unlock and open the upper service door. It is held open with the door support arm.
2. Remove the 1/4" control panel mounting screw (located at the left center of the panel).
3. Swing the control panel out so that the control board is accessible.
4. Remove the multiple wire connectors from the board.
5. Remove the single terminal wires. The wire colors are labeled on the control board.
6. Remove the five nuts that mount the electronic control board. Note that one nut is a keps nut. Be sure that the keps nut is reinstalled in the correct position as it grounds the control.
7. Remove the ribbon connector for the membrane switch and then lift the control board off of the mounting studs.

Membrane Switch Removal and Installation

1. Unlock and open the upper service door. It is held open with the door support arm.
2. Remove the 1/4" control panel mounting screw (located at the left center of the panel).
3. Swing the control panel out so that the control board is accessible.
4. Peel the adhesive membrane switch off the mounting plate. Note: The switch can not be reused.
5. Pull the ribbon from the connector on the electronic control board and remove the membrane switch.
6. Clean the mounting plate. Note: Be sure that all adhesive is removed before installing the new switch.
7. Route the ribbon cable through the slot in the mounting plate and the control board.
8. Install the membrane switch onto the control panel.
9. Install the ribbon by holding it near the end and pushing it into the connector until it bottoms out.

Coin Acceptor Removal

1. Unlock and open the upper service door. It is held open with the door support arm.
2. Remove the 1/4" control panel mounting screw (located at the left center of the panel).
3. Swing the control panel out so that the coin acceptor is accessible.
4. Remove the two screws that mount the acceptor.
5. Remove the two wires from the coin switch. Note: The wires go on the two outside terminals. The middle terminal is not used.
6. The coin return button and its retainer can be disassembled by removing one additional screw. Note: Keep this screw separate from the acceptor mounting screws as it is shorter.
7. The coin return bail (U-shaped) can be removed by unscrewing two nuts.
8. The coin switch can be removed from the coin acceptor by removing the two mounting screws.

Coin Acceptor Adjustment

1. Coin thickness (see upper diagram on next page)

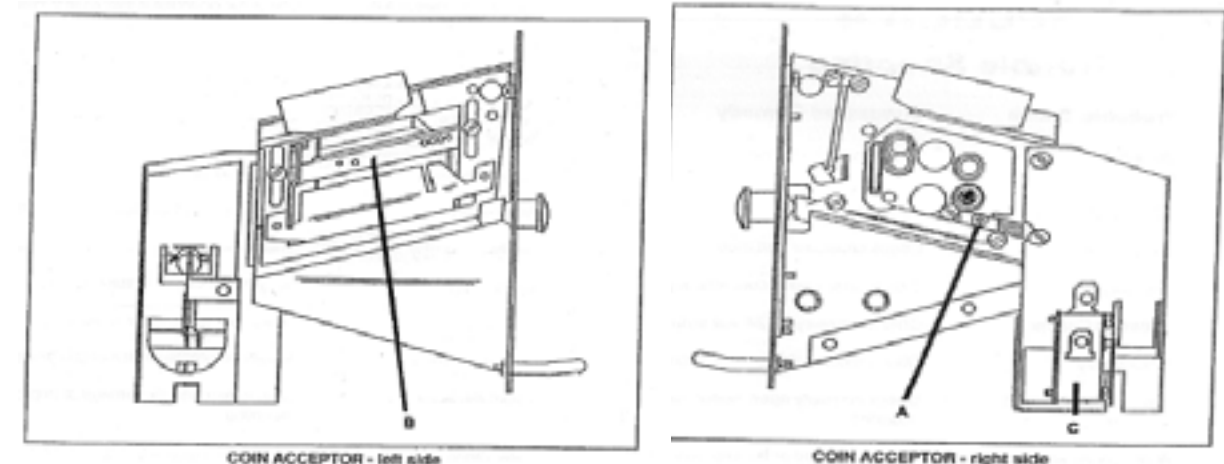
On the right side of the acceptor there is a coin thickness adjusting screw "A" with a locking nut. To allow for different thickness coins the screw can be turned in to accept thicker coins and turned out to reject thicker coins. Start with a quarter of a turn on this screw and be sure to tighten the lock nut after adjustment.

2. Coin height (see lower diagram on next page)

On the left side of the acceptor is a coin height adjusting bar "B". This bar is adjusted by loosening the two mounting screws and moving both ends up or down equal amounts. The bar should be raised as high as possible while still accepting the correct coins. If it is raised to high, the good coins will be rejected.

3. Coin switch adjustment (see upper diagram on next page)

The normally open coin switch "C", should click (close) soon after the coin hits the actuator wire. However, there must be enough travel to allow the switch to reset (open) once the coin has passed. Adjustments should be made by bending the wire very close to its attachment point.



Section 5: Trouble Shooting

Section 5: Trouble Shooting - Gas Heated

Symptom	Probable Cause	Suggested Remedy
Tumbler does not turn	Drive belts	Check both drive belts
	Overtemp Thermostat	Check to see if manually resettable thermostat is kicked out.
	Drive motor	Check capacitor and motor
	Door switch	Check door switch contacts and adjustment
	Electronic control	Check run relay for 24 volt output
	Motor Relay	Check motor relay coils (24v) and contacts.
	Coin Acceptor Switch	Check normally open switch for continuity when actuated.
	Wire connections between coin acceptor, electronic control, and motor	Check for loose or broken wires
	Membrane Switch Assembly	Check for inoperative membrane switch assembly
Tumbler turns but no spark at burner	Temperature Sensor	Check by plugging in good sensor
	Spark Electrode	Check electrode for damage to electrode or mounting
	Ignition control	Try another control
	Hi-limit	Check hi-limit
	Over-temp	Check by inserting pencil eraser side thru (Manual Reset) hole and push to reset
	Gas supply	No gas can cause system lockout check for W.C.
	Air flow switch	Check for circuit through air flow switch
Erractic Display	Initial start up	If erratic on start up, leave power on for approximately one hour and check machine operation again.
	Grounding	Machine must be grounded by separate conductor back to neutral bar in breaker box.
	Program	check program and make corrections if necessary.
	Voltage spike	Power down machine for 20 seconds and retry. If no results, then replace control.

Kits, Assemblies, & Common Parts

Coin Acceptor Components	Part Number
Mechanical Coin Acceptor	9021-002-016
Loading Door Components	Part Number
Door Handle	9244-082-001
Door Close Switch	9539-461-001
Electrical Components	Part Number
Transformer, Control	8711-007-001
Controls	9471-011-002
Heating Circuit Components	Part Number
Ignition Control Module	9857-116-003
Ignition Electrode Assembly	9875-002-003
Thermostat, Hi-Limit	9576-203-002
Thermostat, Overtemp	9576-207-006
Fuseholder	9200-001-002
Fuse 1.5 amp	8636-018-001
Airflow Switch	9539-461-009
Cabinet Components	Part Number
Cleanout Duct Assembly 8"	9973-034-001

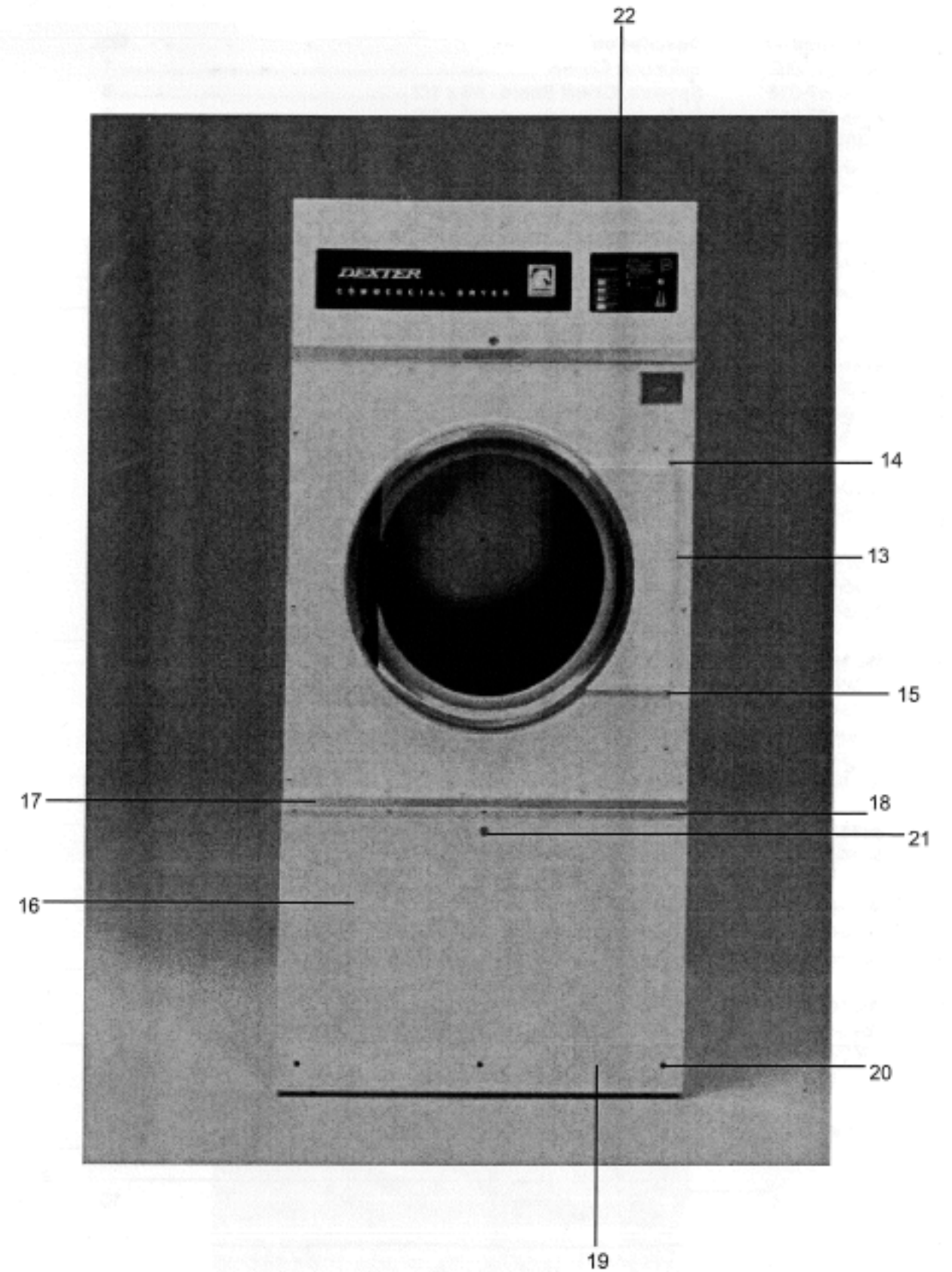
Section 6: Parts Data

Cabinet Group

Key	Part Number	Description	Qty
*	9960-256-021	Door Assy., Loading Complete -White	1
*	9960-256-025	Door Assy., Loading Complete - SS	1
*	9960-256-022	Door Assy., Loading complete -Almond	1
1	9960-255-007	Door Ring, Loading	1
2	9982-280-002	Plate Assy., Hinge - White	1
2	9982-280-011	Plate Assy., Hinge - SS	1
2	9982-280-005	Plate Assy., Hinge - Almond	1
*	9545-012-015	Screw, Hinge to Door 10-32 x 3/8"	4
*	8640-413-002	Nut, Hinge to Door#10-32 UNF	4
3	9212-002-003	Glass, Door	1
4	9206-164-009	Gasket, Glass	1
*	9548-117-000	Support, Door Glass (inside gasket)	1
5	9206-420-002	Gasket, outer Rim	1
6	9244-082-001	Handle, Loading Door	1
*	9545-018-017	Screw, Handle 1/4"-13 x 11/4"	2
*	9531-033-001	Stud, Door Catch	1
*	8640-413-001	Nut, Hex	1
*	8640-413-003	Nut , Acorn # 10-32	1
*	9086-015-002	Catch, Loading Door	1
7	9989-460-006	Panel Assy., Front - White	1
7	9989-460-004	Panel Assy., Front - SS	1
7	9989-460-007	Panel Assy., Front -Almond	1
*	9942-027-008	Coin VaultAssy., White	1
*	9942-027 006	Coin VaultAssy., Gray	1
*	9942-027-007	Coin VaultAssy.,Almond	1
8	9108-100-004	Door, Upper Service - SS	1
8	9108-100-006	Door, Upper Service- White	1
8	9108-100-007	Door, Upper Service - Almond	1
9	9578-090-002	Trim, Door-Upper Service	1
*	6292-006-006	Key (only) (FJWCC)	1
10	8650-006-003	Lock w/ nut, Upper Service Door	1
*	8638-211-001	Rivet, Drive	2
*	8641-581-005	Washer, Flat 3/16"	2
*	9548-243-002	Support, Upper Door	1
11	9412-083-002	Nameplate, Commercial Dryer	1
12	9545-012-003	Screw, Chrome 10-32 x 1/2"	4
*	8641-436-004	Washer, Fiber	4
*	8641-582-019	Lockwasher # 10	10
*	8640-399-001	Nut, Spring U type 1OZ	6

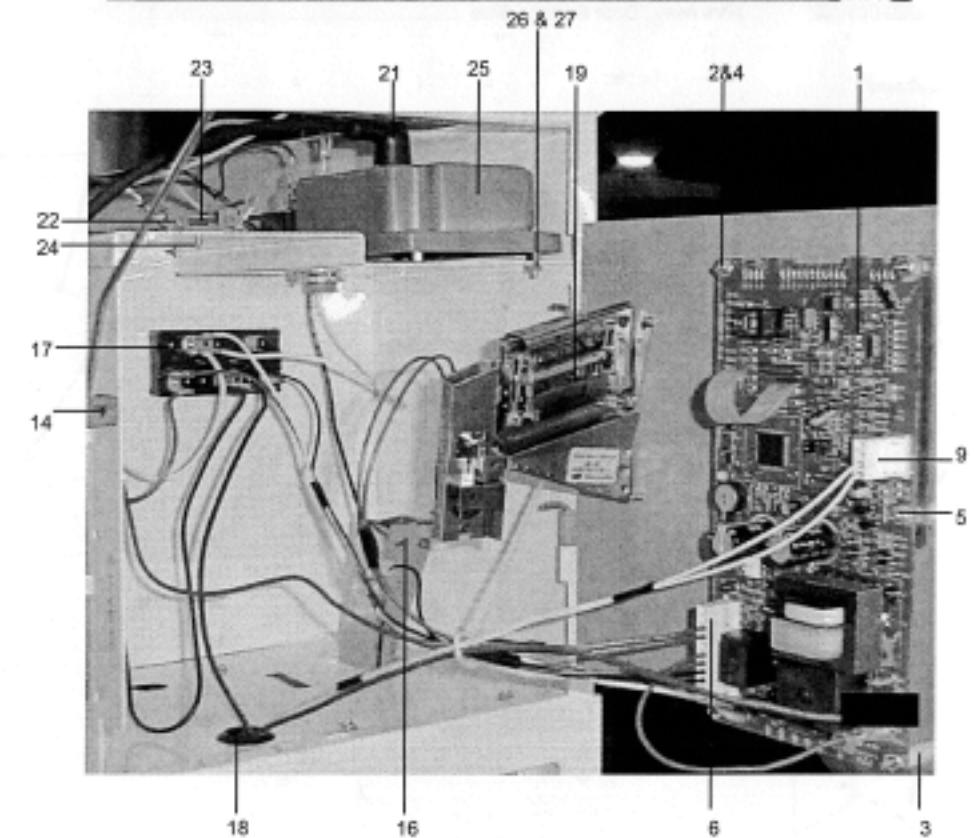
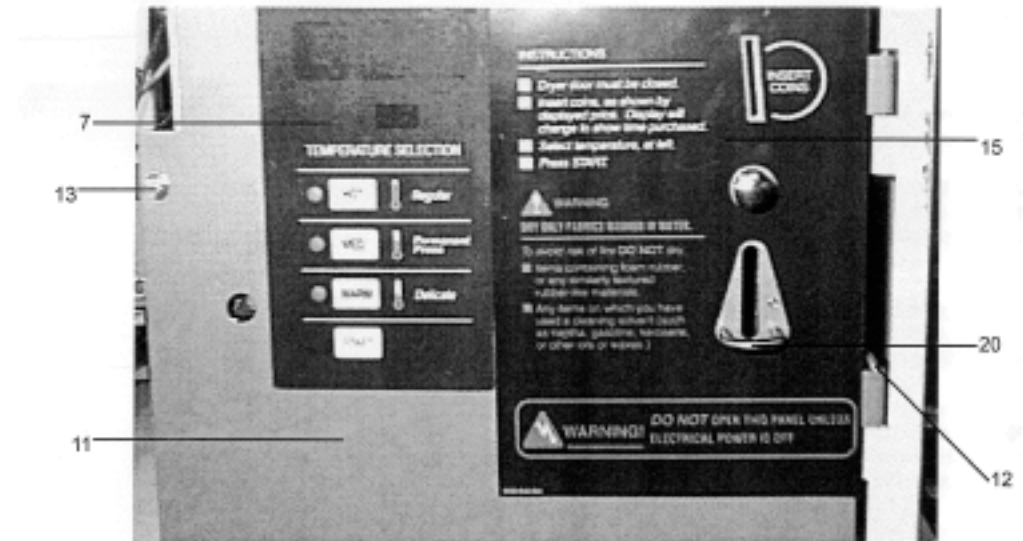
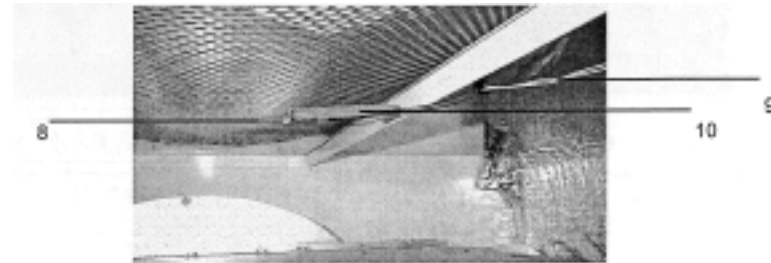


Key	Part Number	Description	Qty
13	9544--047-002	Strap, Hinge- White	1
13	9544-047-007	Strap, Hinge - Gray	1
13	9544-047-005	Strap, Hinge - Almond.	1
*	9545-008-008	Screw, Hinge to Panel 10T-32 x 1/2"	4
14	9545-052-001	Screw, Door to Hinge Strap (special)	1
15	8641-436-003	Washer, Fiber/ Plastic	1
16	9960-261-001	Door Assy., Lower Service -.ss	1
16	9960-261-003	Door Assy., Lower Service - White	1
16	9960-261-004	Door Assy., Lower Service - Almond.	1
17	9578 088-001	Trim, Door - Lower Service	1
18	9545-008-021	Screw,Pn Hd Cr., #10Bx3/8	5
19	9578-084-002	Trim, Kick- Lower Service Door	1
*	9435-004-010	Overlay- Trfm, Kick	1
20	9545-008-010	Screw, Tr Hd Cr-#10x1/2 Blk.	3
21	8650-00 003	Lock w/nut, Lower Service Door	1
*	6292-006-006	Key (only), FJWCC	1
*	8544-005-000	Leg, Leveling	4
*	9049-074-001	Baffle, Cabinet- Left	1
*	9049-074-002	Baffle, Cabinet- Right	1
*	9545-008-003	Screw, #10x1/2 TEK	8
22	9074-273-001	Cover, Cabinet	1
*	9545-008-024	Screw	10
*	9277-049-001	Insulation, Front Panel (Top)	1
*	9277-049-0{2}	Insulation, Front Panel (Bottom)	1
*	9277-051-001	Insulation, Side Panels	4
*	9277-050-002	Insulation, Lower Service Door	1
*	9277-047-001	Insulation, Tqp Left Cabinet Side (byburner housing)	1
*	9277-047-002 -	Insulation, Upper Service Door	1



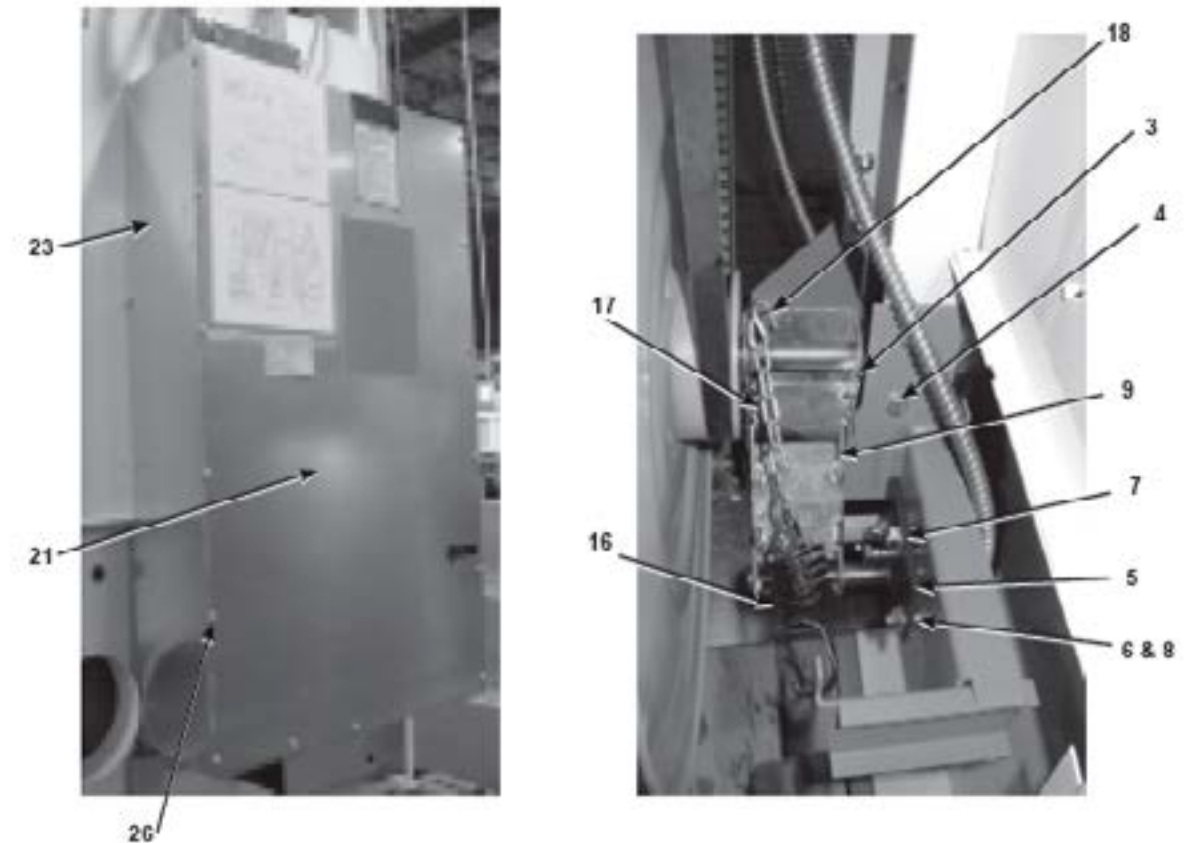
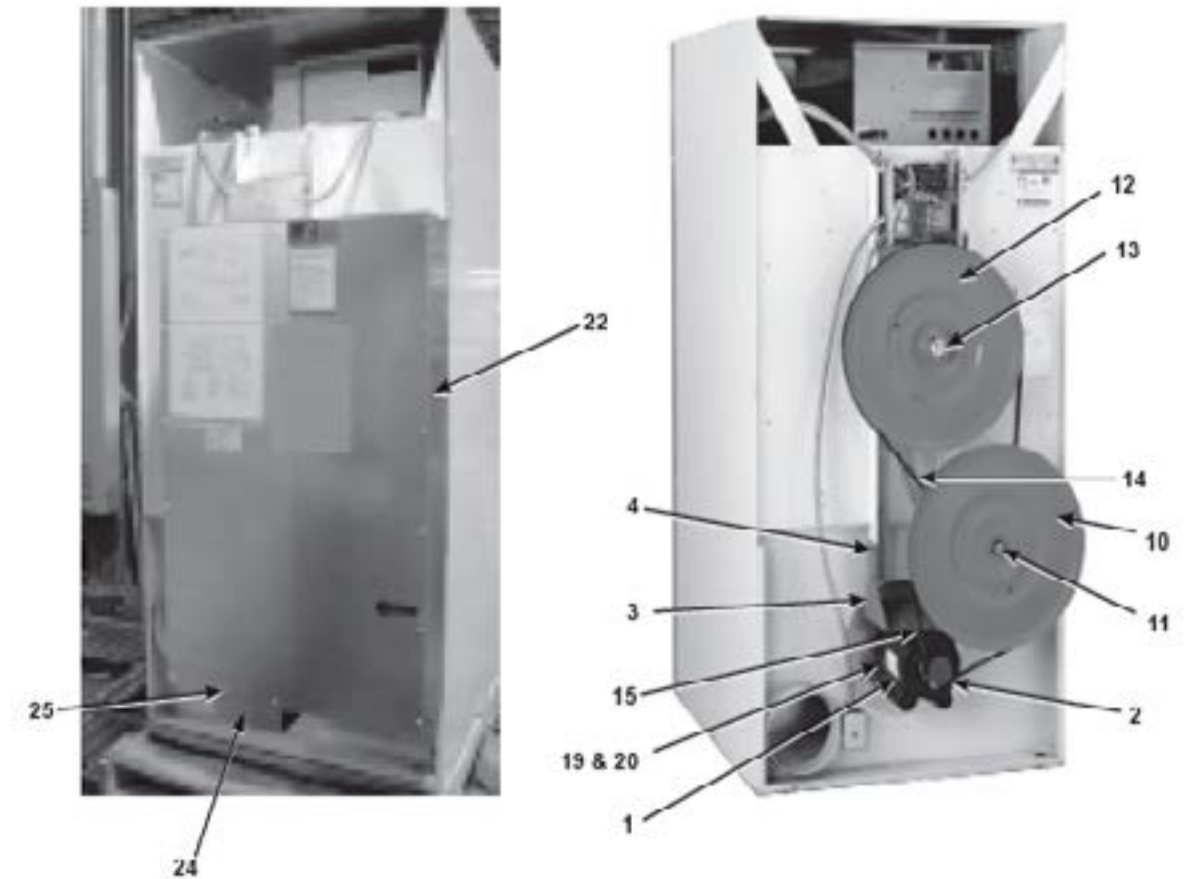
Front Control Housing Group

Key	Part Number	Description	Qty
1	9471-011-002	Electronic Control	1
2	9538-157-016	Spacers, Circuit Board -#6 x 1/2	3
3	9538-157-017	Spacers, Circuit Board - #6 x 7/8	3
4	8640-411-001	Nut, Circuit Board	4
5	8640-411-003	Nut, Keps - Circuit Board (for grounding)	1
6	9627-651-001	Harness, Wiring (Electronic Control)	1
7	9801-077-001	Switch Assy., Membrane	1
8	9501-004-002	Sensor, Temperature	1
9	9627-679-001	Harness, Temperature Sensor	1
10	9029-111-001	Bracket, Sensor Mounting	1
11	9982-305-002	Plate Assy., Electronic Control	1
12	9451-146-005	Pin, Hinge - Control Plate Assy	2
13	9545-045-002	Screw, Mtg. (left edge)	1
14	9039-981-001	Nut, Angled Spring	1
15	8502-640-004	Label, Control Instruction/ Warning	1
16	9940-013-001	Chute Ass'y Coin	1
*	9545-008-024	Screw, Coin Chute Mtg	1
17	9897-026-001	Terminal Block	1
*	9545-031-004	Screw Terminal Block Mtg	2
18	9053-067-001	Bushing, Door Switch Wires	1
19	9021-002-016	Coin Acceptor Complete (includes #20)	1
*	9732-126-001	Switch,Coin	1
20	9063-004-001	Bail, Coin Return	1
*	8640-406-009	Nut, Bail mtg	2
*	9545-025-021	Screw, Acceptor Mtg	2
*	8641-573-012	Lockwasher	2
21	9631-403-003	Wire Ass'y, High Voltage	1
*	9627-711-001	Harness, Low Voltage Ignition	1
22	9054-045-001	Fuseholder	1
23	8636-018-004	Fuse, 2.5 amps	1
24	9545-031-005	Screw #6B x 3/8	1
25	9857-116-002	Control, Ignition	1
26	9545-044-002	Screw 6-32 x 1"	2
27	8640-411-003	Nut, Hex Keps #6-32	2



Drive Group

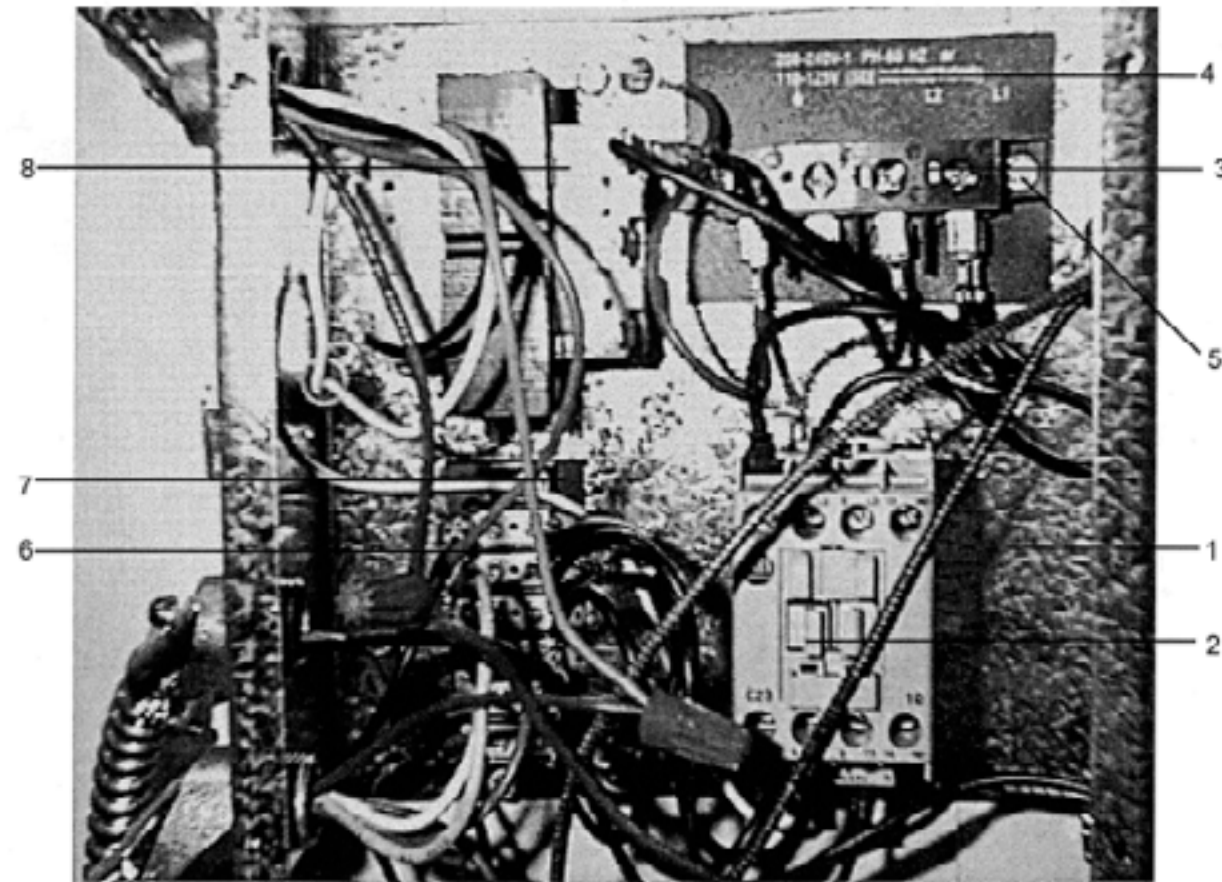
Key	Part Number	Description	Qty
1	9376-299-002	Motor, Drive	1
*	9732-205-008	Motor Replacement Kit	1
*	9545-014-004	Screw, Hx 5/16-18 x 5/8"	4
*	8640-400-003	Nut 5/16-18	4
2	9453-157-001	Pulley, Motor	1
*	9545-028-013	Screw, Set	2
3	9991-054-002	Support Assembly, Motor	1
4	9545-029-005	Screw 3/8-16 x 1 1/4"	4
4	8640-415-004	Nut 3/8-16	4
5	9991-053-001	Support Assembly, Intermed. Pulley	1
6	9545-029-010	Bolt, Rd Hd, 3/8-16 x 1 1/4"	3
7	9545-029-003	Screw, 3/8-16 x 1 1/2"	1
8	8640-415-004	Nut 3/8-16	3
*	8641-581-035	Washer, Flat	4
9	9861-024-003	Arm Assembly-Tension	1
*	8641-581-035	Washer, Flat	1
*	9487-200-006	Ring-Retaining	1
10	9908-042-006	Pulley Assembly, Intermediate - w/bearings	1
11	9036-159-007	Bearing, Ball-Idler Pulley	2
*	9538-173-002	Spacer, Bearing	1
12	9908-043-002	Pulley Driven	1
*	9487-234-001	Ring, Tolerance	1
13	8641-581-026	Washer, Flat	1
13	8641-582-016	Lockwasher	1
13	9545-017-009	Screw, Hx Cap	1
14	9040-077-004	Belt, Final Drive	1
15	9040-077-003	Belt, Motor Drive	1
16	9534-151-000	Spring, Belt Tension	1
17	9099-012-002	Chain, Spring Tension	1
18	9248-022-002	Hook, Tension	1
21	9208-067-001	Guard, Drive	1
22	9454-685-001	Panel, Drive Guard, RH	1
23	9454-686-001	Panel, Drive Guard, LH	1
24	9550-175-001	Shield, Motor	1
25	9545-008-003	Screw	2
26	9545-008-024	Screw (to attach to guards above)	24



Rear Control Group

Key	Part Number	Description	Quantity
1	9041-081-001	Box, Control.....	1
*	9074-280-001	Cover, Control Box.....	1
*	9545-008-024	Screw.....	4
2	5192-295-011	Relay.....	1
*	9545-045-007	Screw, #8Bx 3/4.....	2
3	9897-035-002	Terminal Block Assembly, Power.....	1
4	9558-029-003	Strip, Termin I Marker.....	1
5	9545-045-002	Screw, #8Bx 1-12.....	2
6	9897-034-001	Terminal Block Assembly.....	1
7	9558-027-001	Strip, Terminal Marker.....	1
*	8639-621-007	Screw, Hx #10-32 x 1/2 (ground).....	1
*	8641-582-006	Lockwasher, Ex Tooth # 10.....	1
8	8711-007-001	Transformer, Control.....	1
*	9545-012-009	Screw, Hx. #10-32x1/2.....	2
*	8640-413-002	Nut, Keps - #10-32.....	2

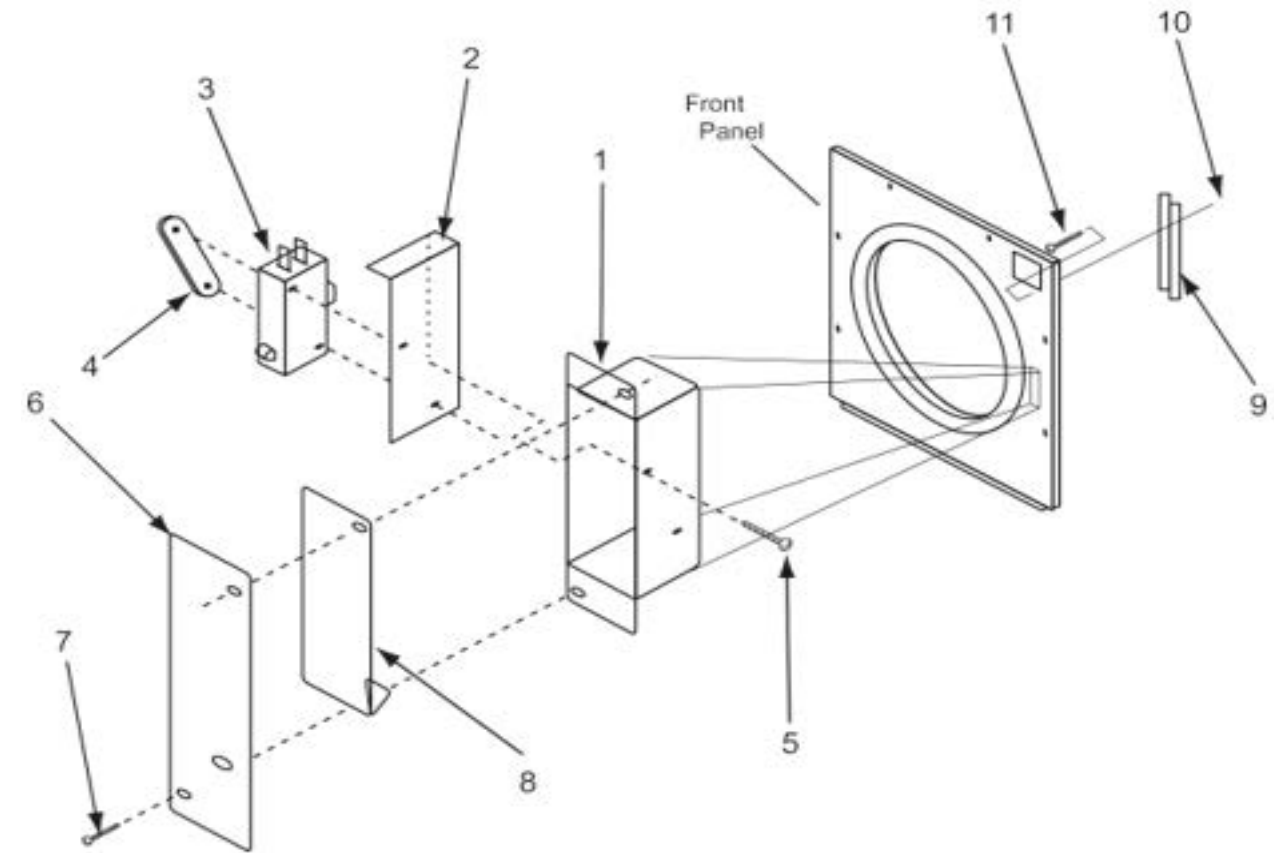
* Not Illustrated



Door Switch Group

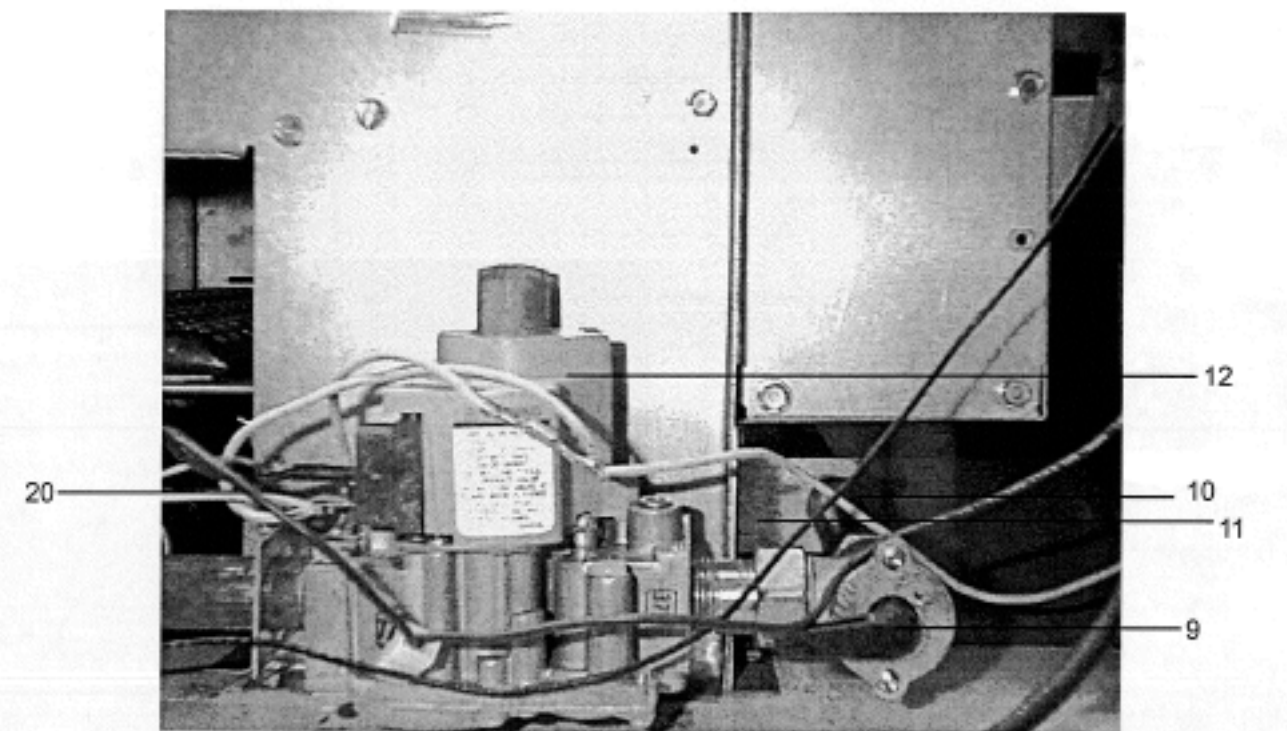
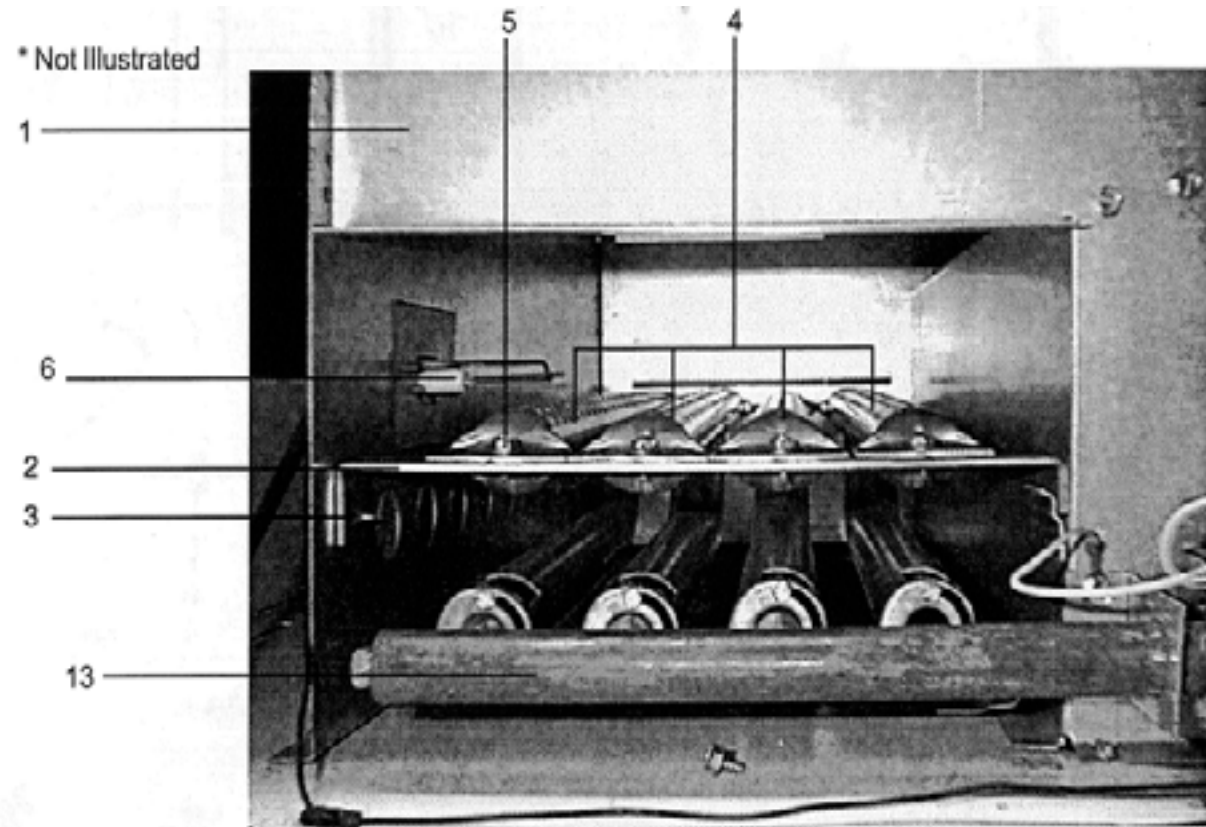
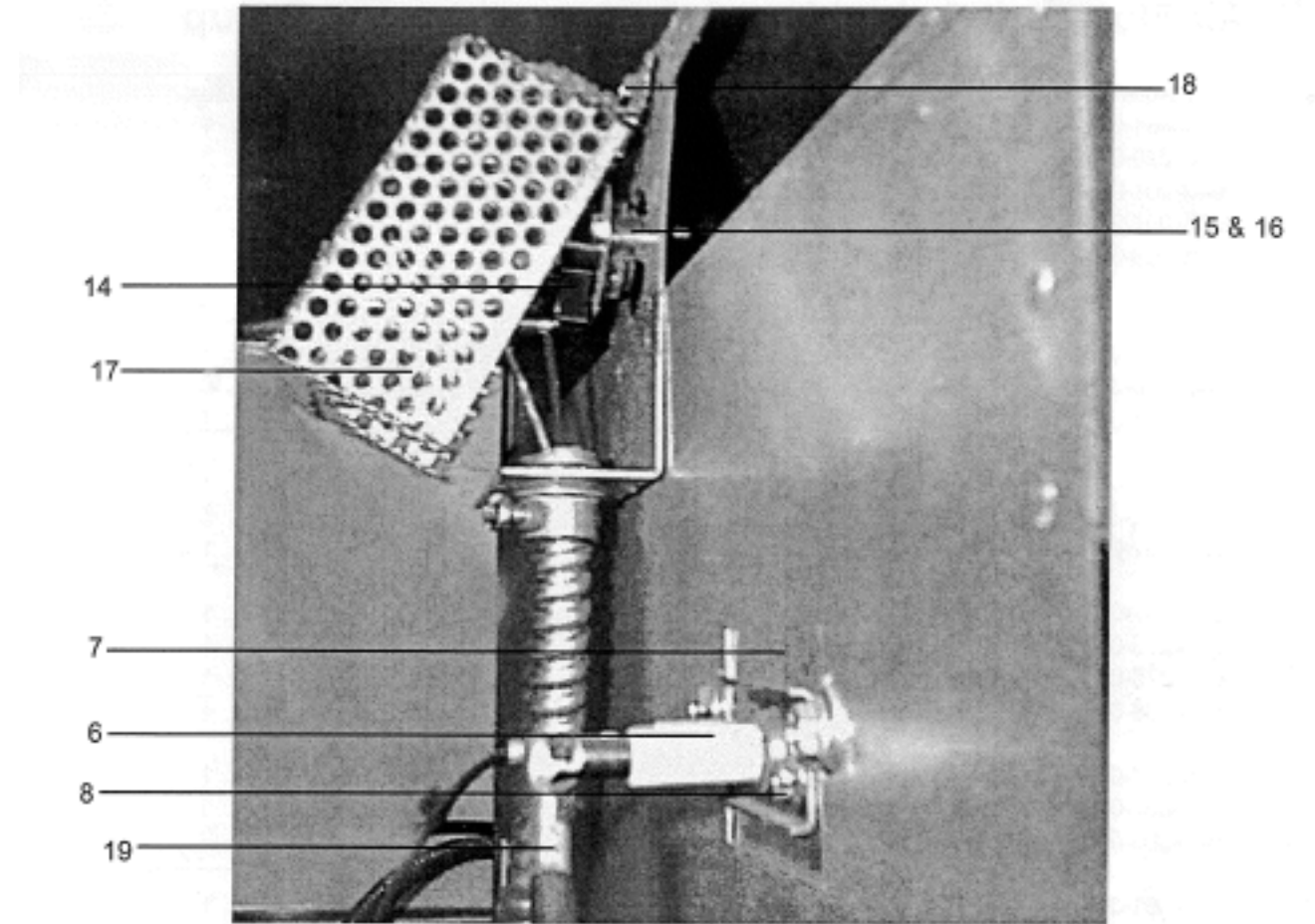
Key	Part Number	Description	Quantity
1	9041-076-001	Box, Door Switch.....	1
2	9550-159-001	Shield, Door Switch.....	1
3	9539-461-007	Switch, Door.....	1
4	8640-401-001	Nut, Special Twin #4-40.....	1
5	9545-020-001	Screw, Pn Hd Sl.#4-40x5/8.....	2
6	9074-255-001	Cover, Switch Box.....	1
7	9545-008-020	Screw, Box Cover 10 AB x 3/4".....	2
8	9008-004-001	Actuator, Switch.....	1
9	6068-041-001	Conduit Special.....	1
10	9545-012-003	Screw. 10-32 x 1/2".....	1
*	8641-436-000	Washer, Fiber.....	1
11	8640-413-004	Nut, ElasticStop 10 -32.....	1

* Not Illustrated



Burner Housing Group

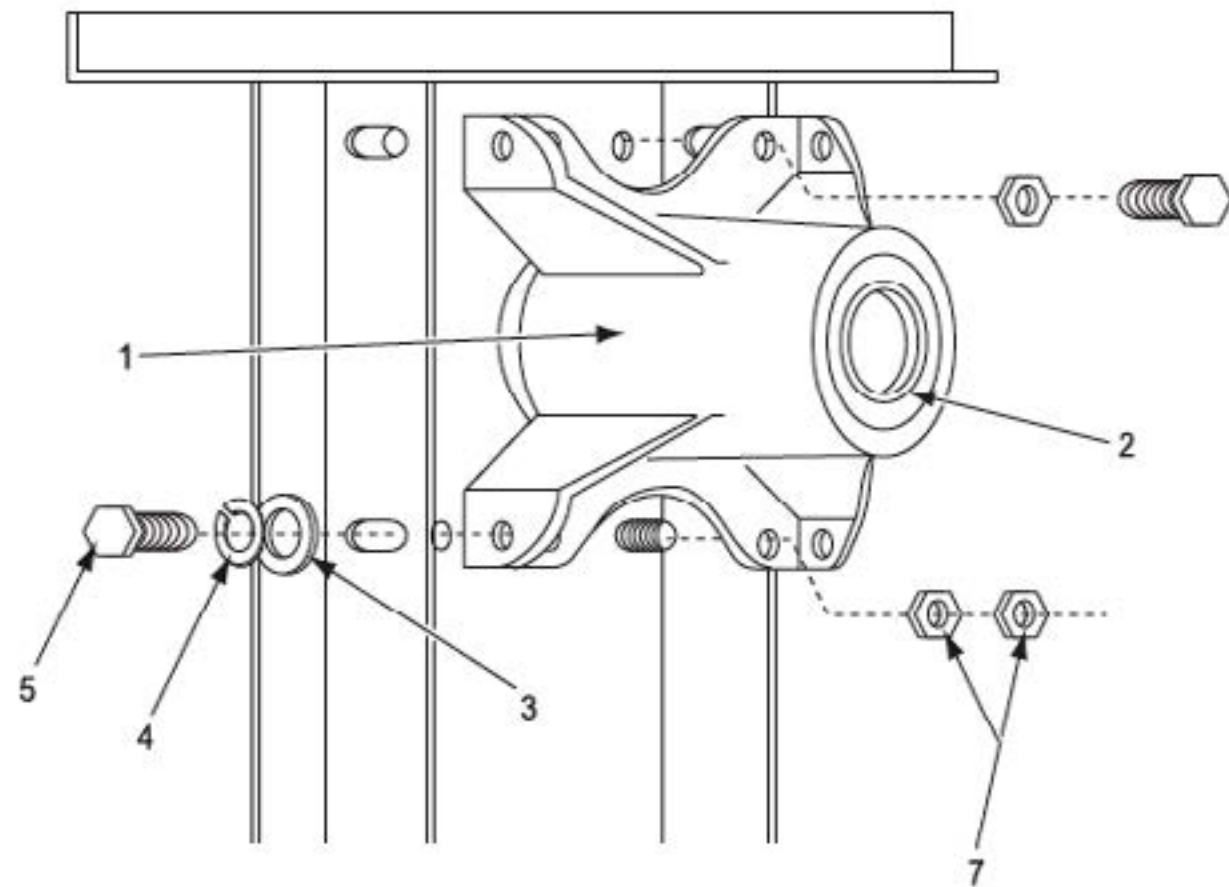
Key	Part Number	Description	Quantity
1	9803-195-001	Housing Assembly, Burner	1
*	9545-008-024	Screw	4
2	9548-280-001	Support, Front Burner	1
3	9545-008-008	Screw 10T-32 x 1/2"	1
4	9048-018-001	Burner, Main	4
5	9545-008-008	Screw 10T-32 x 1/2"	4
6	9875-002-002	Electrode, Ignition	1
7	9452-645-001	Plate, Electrode Mtg	1
8	9545-045-001	Screw, Electrode Mtg 8B x 11/4"	2
9	9379-164-002	Valve, Gas Shut-Off w/ brass union	1
10	9458-020-003	Pipe, Gas Line	1
11	9039-915-001	Bracket, Gas Line Pipe	1
12	9857-134-002	Control Assy, Gas	1
13	9381-011-001	Manifold Assy., 4 port	1
*	9425-069-021	Orifice, Burner - Natural	4
*	9425-069-022	Orifice, Burner - LP	4
*	9732-102-010	Kit, LP Conversion	1
14	9576-203-002	Thermostat, Hi-Limit	1
15	9538-142-001	Spacer, Hi-Limit	2
16	9545-045-007	Screw 8B x 3/4"	2
17	9074-234-001	Cover, Hi-Limit Stat	1
18	9545-008-024	Screw 10B x 3/8"	1
19	9631-403-003	Wire Ass'y, High Voltage	1
20	9627-711-001	Harness, Low Voltage Ignition	1



Bearing Housing Group

Key	Part Number	Description	Qty
*	9803-189-001	Housing, Bearing Ass'y w one(rear) bearing	1
1	9241-183-003	Housing, Bearing	1
2	9036-159-001	Bearing, Ball-Rear	1
*	9036-159-002	Bearing, Ball-Front	1
3	8641-581-026	Washer, Flat 1/2"	4
4	8641-582-004	Lockwasher spring 1/2"	4
5	9545-017-004	Bolt, 1/2-13x1	4
6	9545-059-003	Screw, 7/16-14x1 1/2	2
*	8641-582-013	Lockwasher, 7/16	2
7	8640-416-001	Nut, 7/16-14.	4
*	9487-234-001	Ring, Tolerance	1

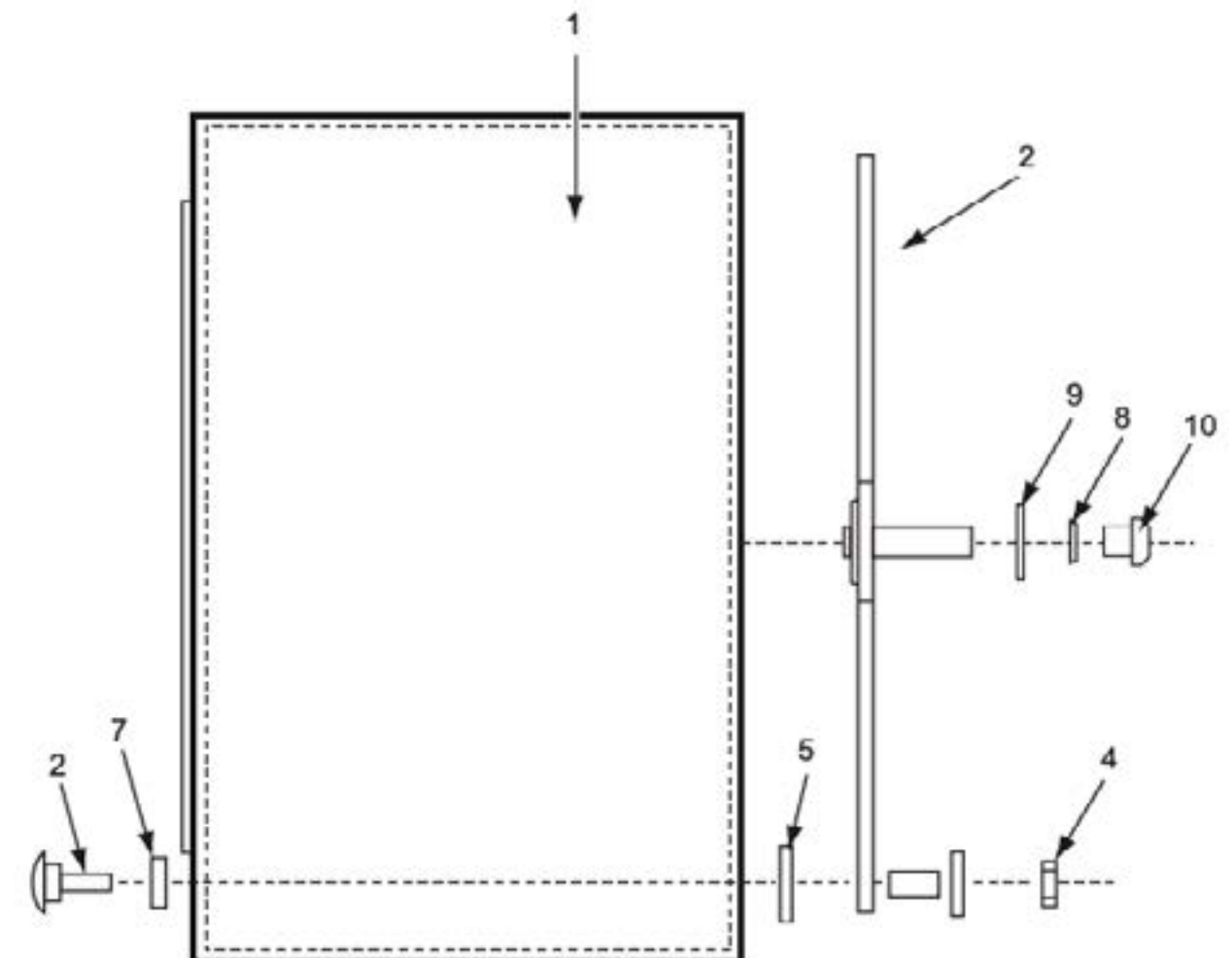
* Not Illustrated



Tumbler Basket Group

Key	Part Number	Description	Qty
1	9848-118-001	Tumbler Ass'y	1
*	9848-118-002	Tumbler Ass'y SS.....	1
2	9873-005-001	Spider Ass'y with bearing on.....	1
3	9497-226-001	Rod, Tumbler	4
4	8640-417-005	Nut 1/2"-13.....	4
5	9552-013-000	Shim.....	4
7	8641-590-001	Washer, Tumbler Rod Special	4
*	9487-234-001	Ring, Tolerance.....	1
8	8641-582-016	Lock Washer ext tooth 1/2", Tumbler Shaft	1
9	8641-581-026	Flat Washer 1/2",Tumbler Shaft.....	1
10	9545-017-009	Screw, Tumbler Shaft 1/2-13 x 11/4"	1

* Not Illustrated

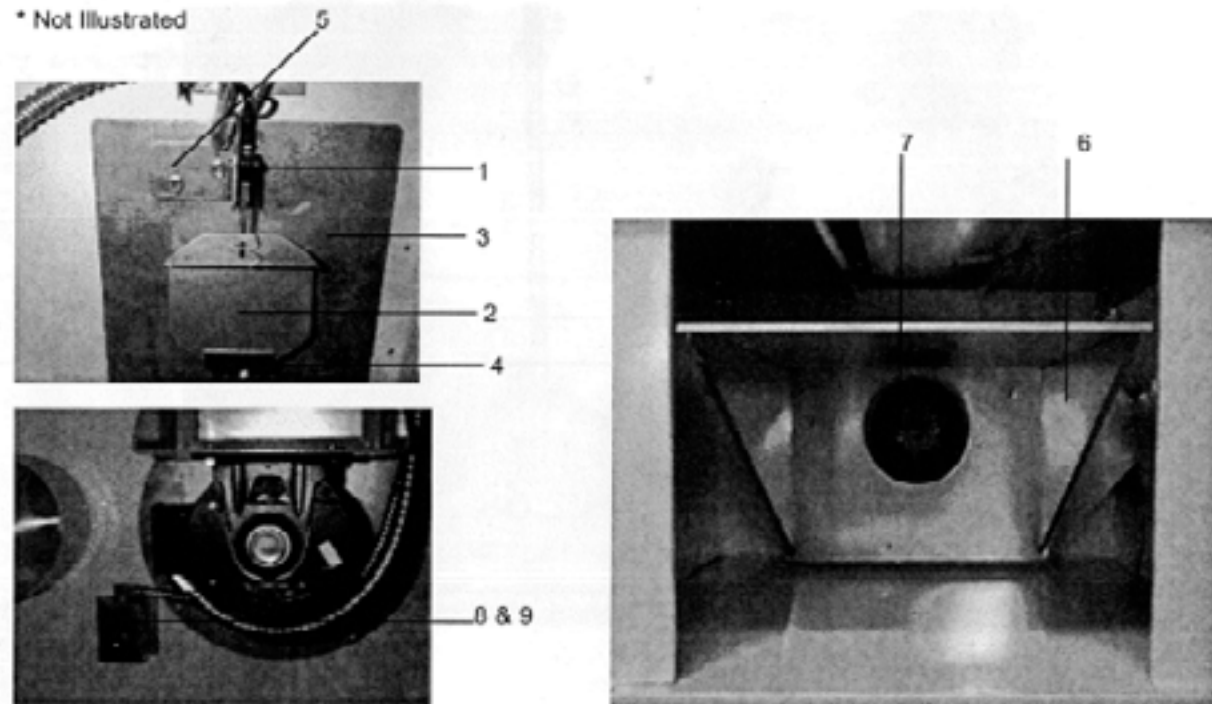


Blower Impeller and Air Flow Switch Group Over Temperature Switch

Key	Part Number	Description	Quantity
1	9539-461-009	Switch, Air Flow	1
*	9545-020-001	Screw, Hx #4-40 x 5/8.....	2
*	8640-401-001	Nut, Special Twin#4-40	1
2	9008-007-001	Actuator-Switch, Air Flow.....	1
*	9451-169-002	Pin, Cotter.....	1
3	9074-283-001	Plate, Cover.....	1
4	9029-046-001	Actuator Stop.....	1
5	9029-100-001	Bracket, Switch	1
*	9545-008-001	Screw 108 x 1/4.....	4
*	9039-575-000	Bracket, Conduit.....	1
6	9834-009-001	Hood Ass'y, Lint	1
*	8640-412-004	Nut, Whizlock.....	6
*	9822-031-002	Lint Screen 34" length	1
7	9278-037-003	Impeller, w/set screws.....	1
*	9074-27S.002	Cover-Half, Blower Impeller {Flat} ...	1
*	9074-27S.003	Cover-Half, Blower Impeller {Formed}	1
*	9545-008-001	Screw, Hex#10Bx1/4	4
8	9576-207-006	Thermostat, Safety	1
9	9825-057-002	Cover, Safety Thermostat.....	1
*	9545-008-001	Screw 108 x 1/4.....	2
*	9345-981-001	Schematic Wiring	1
*	9345-982-001	Diagram Wiring.....	1

* Not Illustrated

* Not Illustrated



Section 7: Maintenance

Preventative Maintenance

Daily

1. Clean lint screen by unlocking and sliding out in their tracks for access. Use soft brush if necessary. Failure to do so will slow drying and increase gas usage and temperatures throughout the dryer.
2. Check lint screen for tears. Replace if necessary.

Monthly

1. Remove lint accumulation from end bells of motor.
2. Clean lint from lint screen compartment.
3. Remove lint and dirt accumulation from top of the dryer and all area above, and around the burners and burner housing. Failure to keep this portion of the dryer clean can lead to a build-up of lint creating a fire hazard.
4. Place a few drops of light oil on top and bottom pivots of the clothes door hinge.
5. Grease bearings and shaft of intermediate drive pulley.

Quarterly

1. Check belts for looseness, wear or fraying.
2. Inspect gasket of door glass for excessive wear.
3. Check tightness of all fasteners holding parts to support channel.
4. Check tightness of tumbler shaft retaining nut.
5. Remove lint accumulation from primary air ports in burners.
6. Grease pivot pins and tension arms where in contact with each other.

Semi-Annually

1. Remove and clean main burners.
2. Remove all orifices and examine for dirt and hole obstruction.
3. Remove all lint accumulation. Remove front panel, lint screen housing and remove lint accumulation.

Annually

1. Check intermediate pulley bearings for wear.
2. Check and remove any lint accumulation from exhaust system.