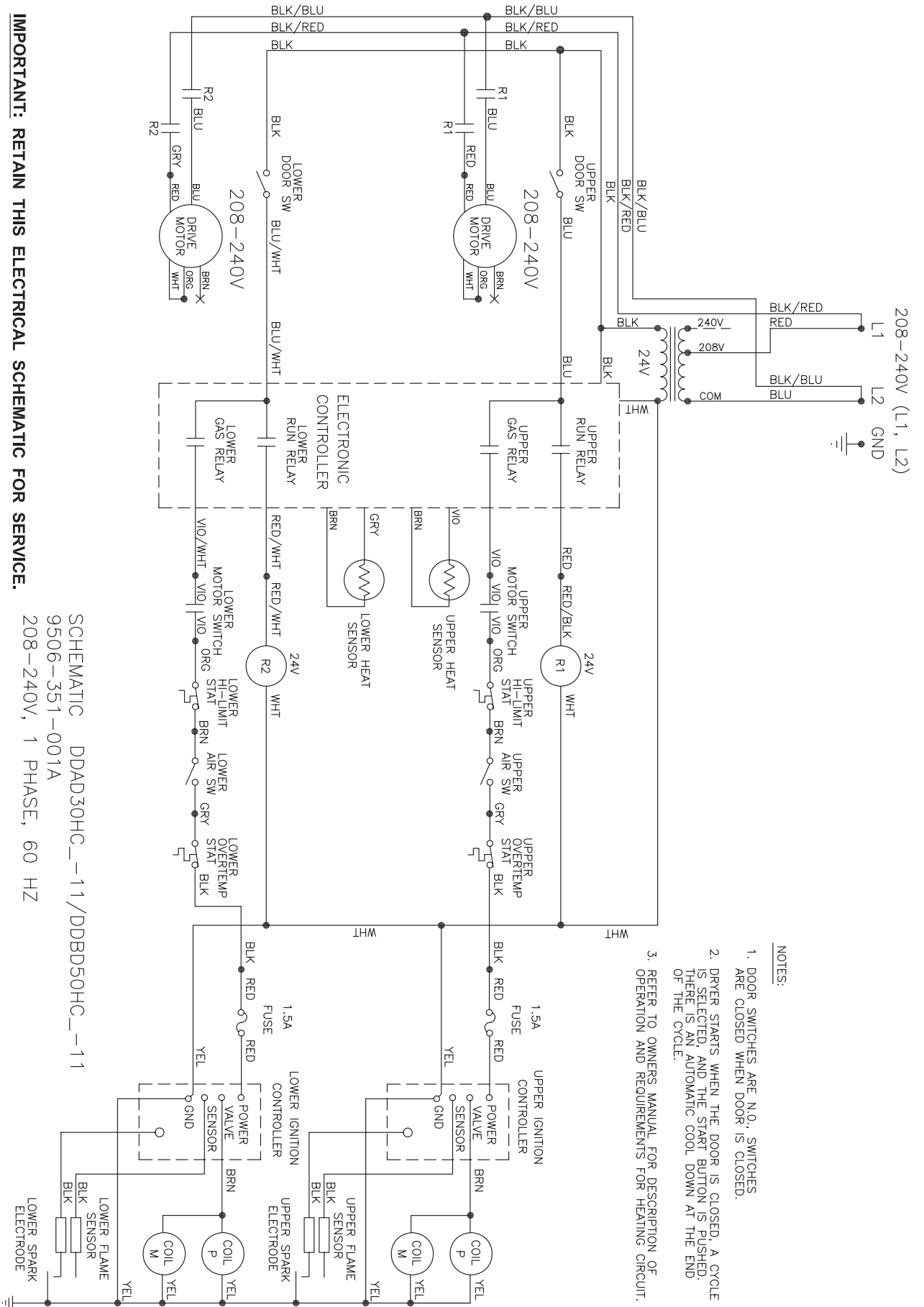


# Wiring Schematic for DDAD Dryer

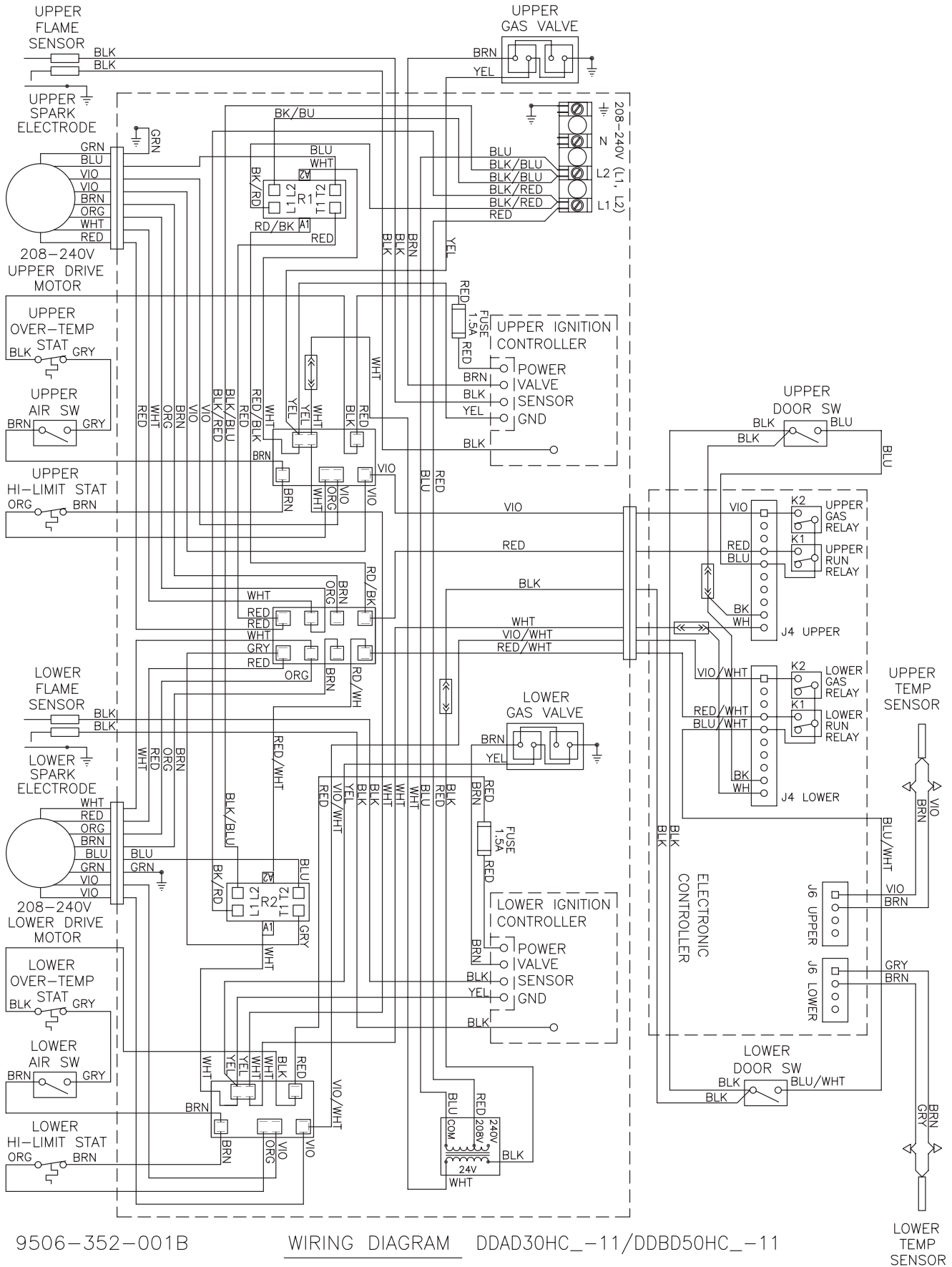


**IMPORTANT: RETAIN THIS ELECTRICAL SCHEMATIC FOR SERVICE.**

SCHMATIC DDAD30HC\_11/DDBD50HC\_11  
 9506-351-001A  
 208-240V, 1 PHASE, 60 HZ

- NOTES:**
1. DOOR SWITCHES ARE N.O. SWITCHES. ARE CLOSED WHEN DOOR IS CLOSED.
  2. DRYER STARTS WHEN THE DOOR IS CLOSED, A CYCLE IS SELECTED, AND THE START BUTTON IS PUSHED. THERE IS AN AUTOMATIC COOL DOWN AT THE END OF THE CYCLE.
  3. REFER TO OWNERS MANUAL FOR DESCRIPTION OF OPERATION AND REQUIREMENTS FOR HEATING CIRCUIT.

# Wiring Diagram for DDAD Dryer



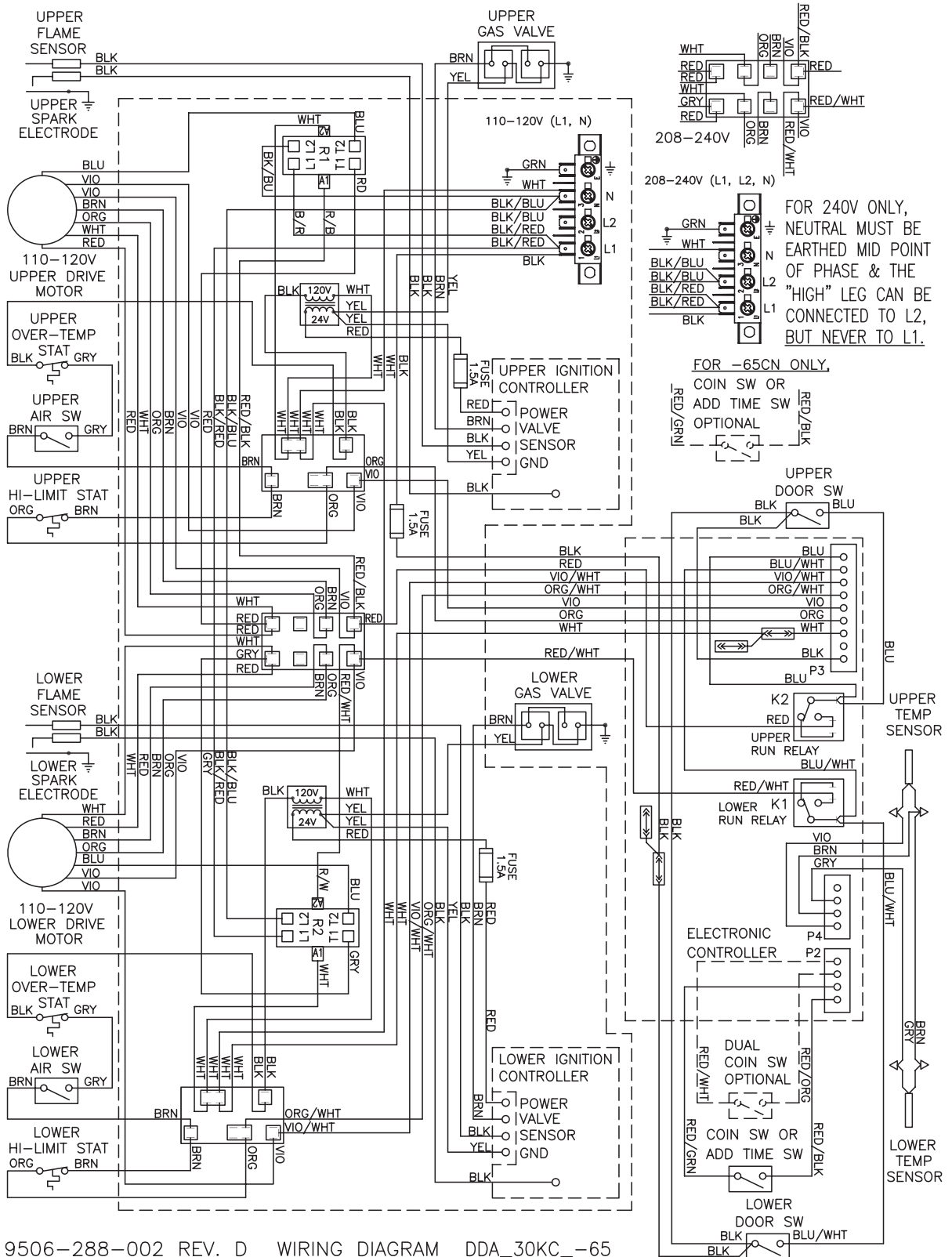
9506-352-001B

WIRING DIAGRAM DDAD30HC\_-11/DDBD50HC\_-11

LOWER TEMP SENSOR

**IMPORTANT: RETAIN THIS ELECTRICAL DIAGRAM FOR SERVICE.**

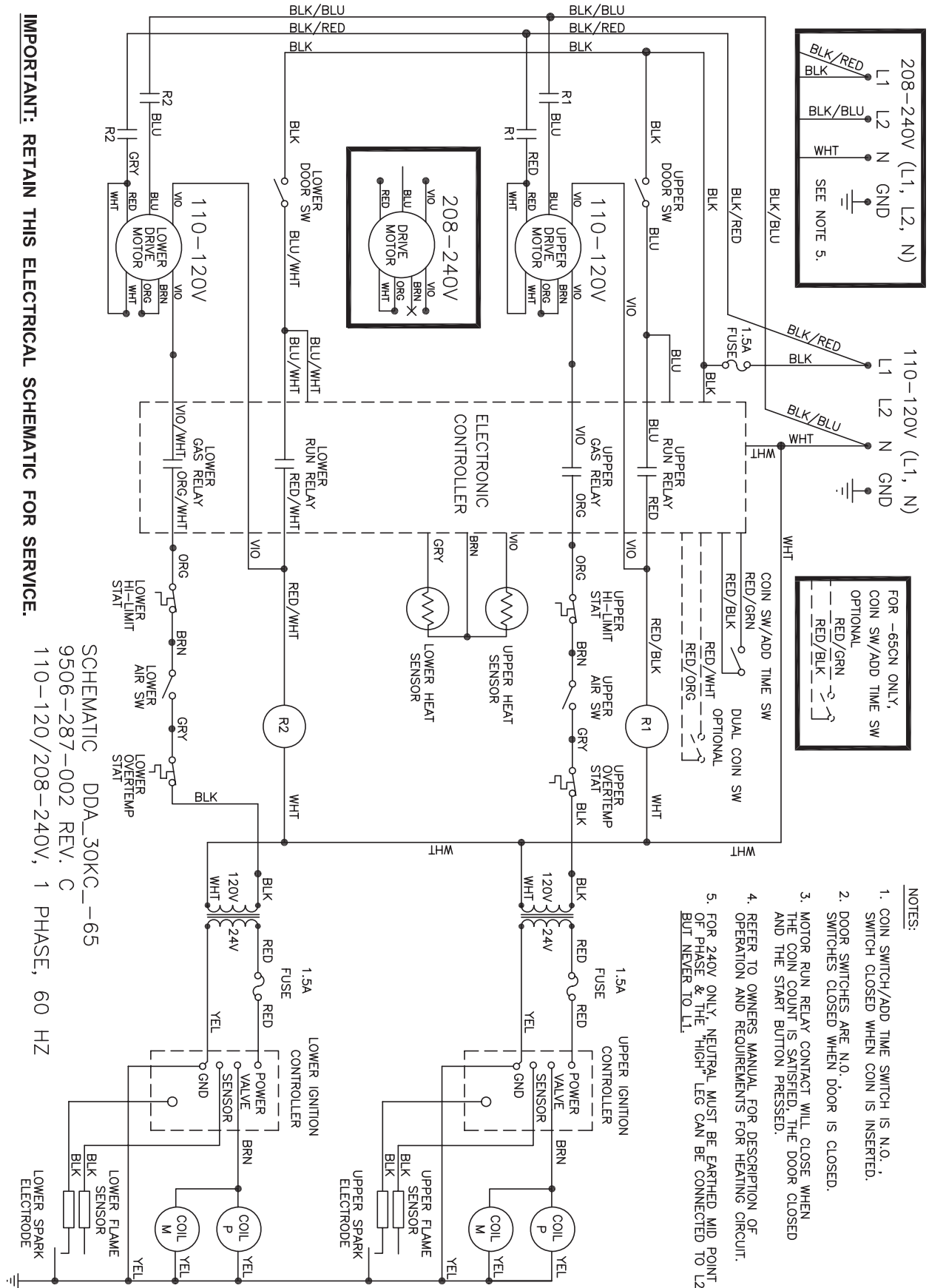
# Wiring Diagram for DDAD Dryer w/control Protection Fuse (after Serial # 211750)



9506-288-002 REV. D WIRING DIAGRAM DDA\_30KC\_-65

**IMPORTANT: RETAIN THIS ELECTRICAL DIAGRAM FOR SERVICE.**

# Wiring Schematic for DDAD Dryer w/control Protection Fuse (after Serial # 211750)

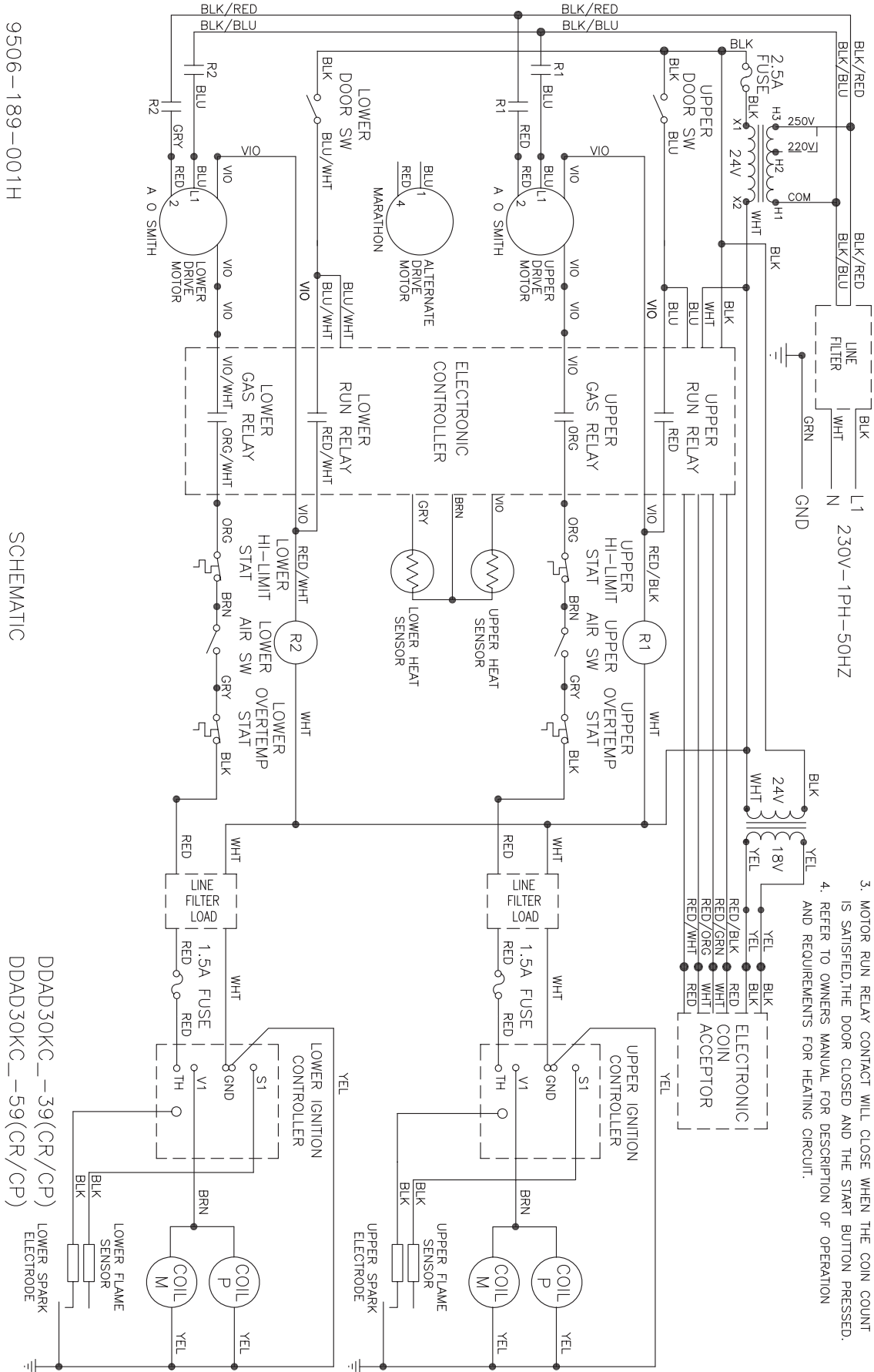


**IMPORTANT: RETAIN THIS ELECTRICAL SCHEMATIC FOR SERVICE.**

SCHEMATIC DDA\_30KC\_65  
9506-287-002 REV. C  
110-120/208-240V, 1 PHASE, 60 HZ

- NOTES:
1. COIN SWITCH/ADD TIME SWITCH IS N.O., SWITCH CLOSED WHEN COIN IS INSERTED.
  2. DOOR SWITCHES ARE N.O. SWITCHES CLOSED WHEN DOOR IS CLOSED.
  3. MOTOR RUN RELAY CONTACT WILL CLOSE WHEN THE COIN COUNT IS SATISFIED, THE DOOR CLOSED AND THE START BUTTON PRESSED.
  4. REFER TO OWNERS MANUAL FOR DESCRIPTION OF OPERATION AND REQUIREMENTS FOR HEATING CIRCUIT.
  5. FOR 240V ONLY, NEUTRAL MUST BE EARTHED MID POINT OF PHASE & THE "HIGH" LEG CAN BE CONNECTED TO L2, BUT NEVER TO L1.

# Wiring Schematic for DDAD Dryer 50HZ



**IMPORTANT: RETAIN THIS ELECTRICAL SCHEMATIC FOR SERVICE.**

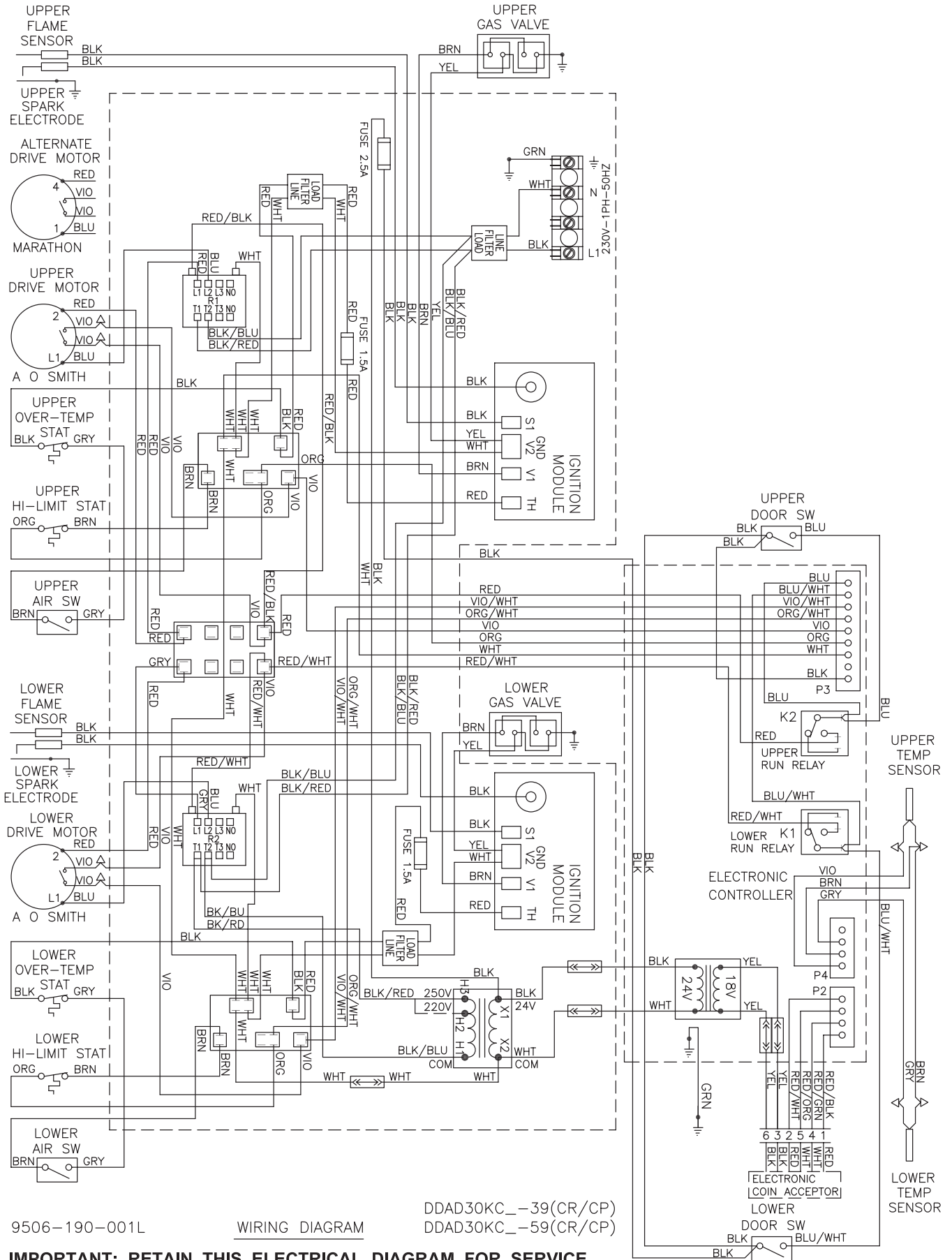
- NOTES:
1. ELECTRONIC COIN ACCEPTOR-N.O., CLOSED WHEN COIN INSERTED
  2. DOOR SWITCHES-N.O., CLOSED WHEN DOOR IS CLOSED.
  3. MOTOR RUN RELAY CONTACT WILL CLOSE WHEN THE COIN COUNT IS SATISFIED, THE DOOR CLOSED AND THE START BUTTON PRESSED.
  4. REFER TO OWNERS MANUAL FOR DESCRIPTION OF OPERATION AND REQUIREMENTS FOR HEATING CIRCUIT.

9506-189-001H

SCHEMATIC

DDAD30KC\_ -39(CR/CP)  
 DDAD30KC\_ -59(CR/CP)

# Wiring Diagram for DDAD Dryer 50HZ



9506-190-001L

WIRING DIAGRAM

DDAD30KC\_-39(CR/CP)  
DDAD30KC\_-59(CR/CP)

**IMPORTANT: RETAIN THIS ELECTRICAL DIAGRAM FOR SERVICE.**