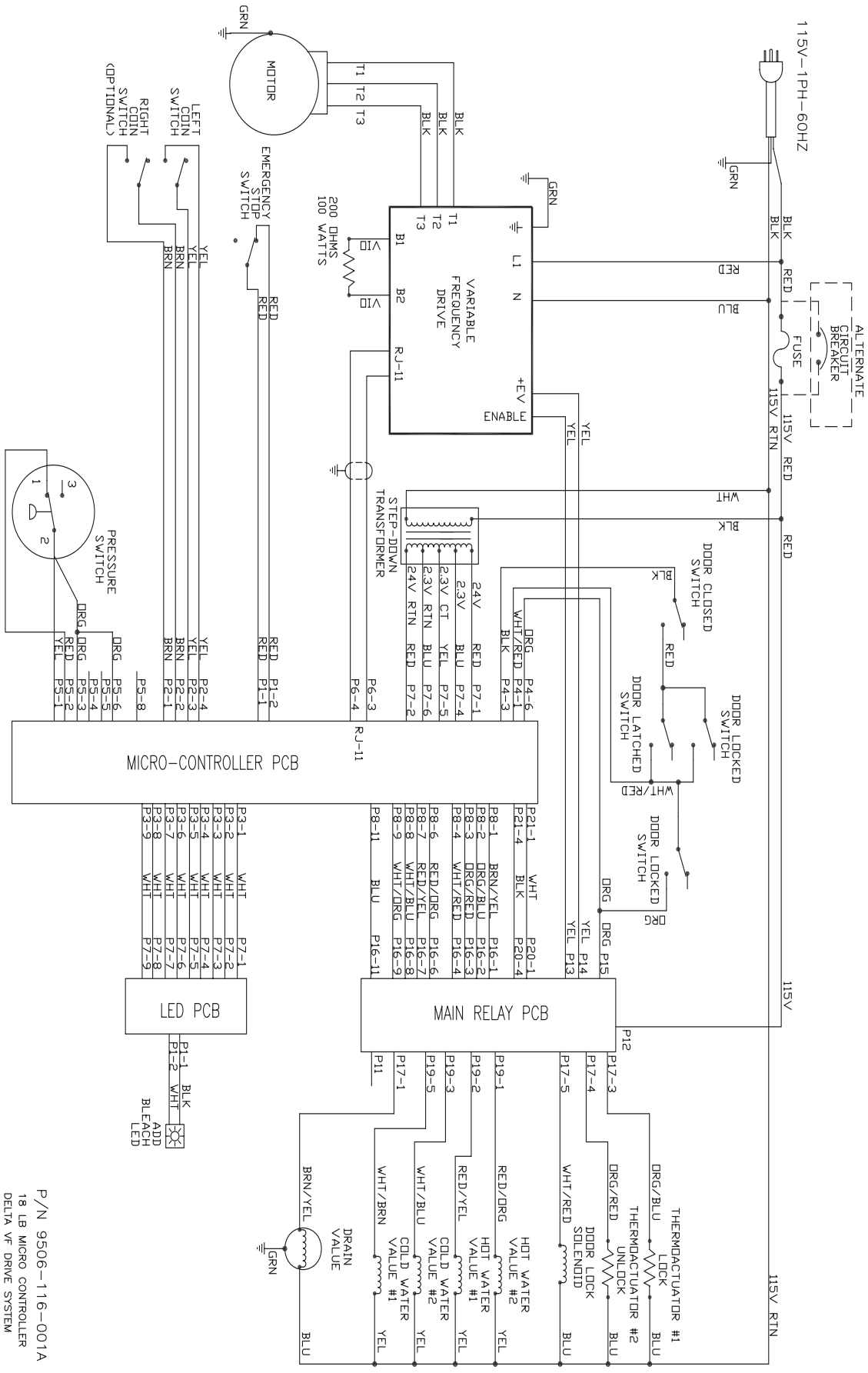
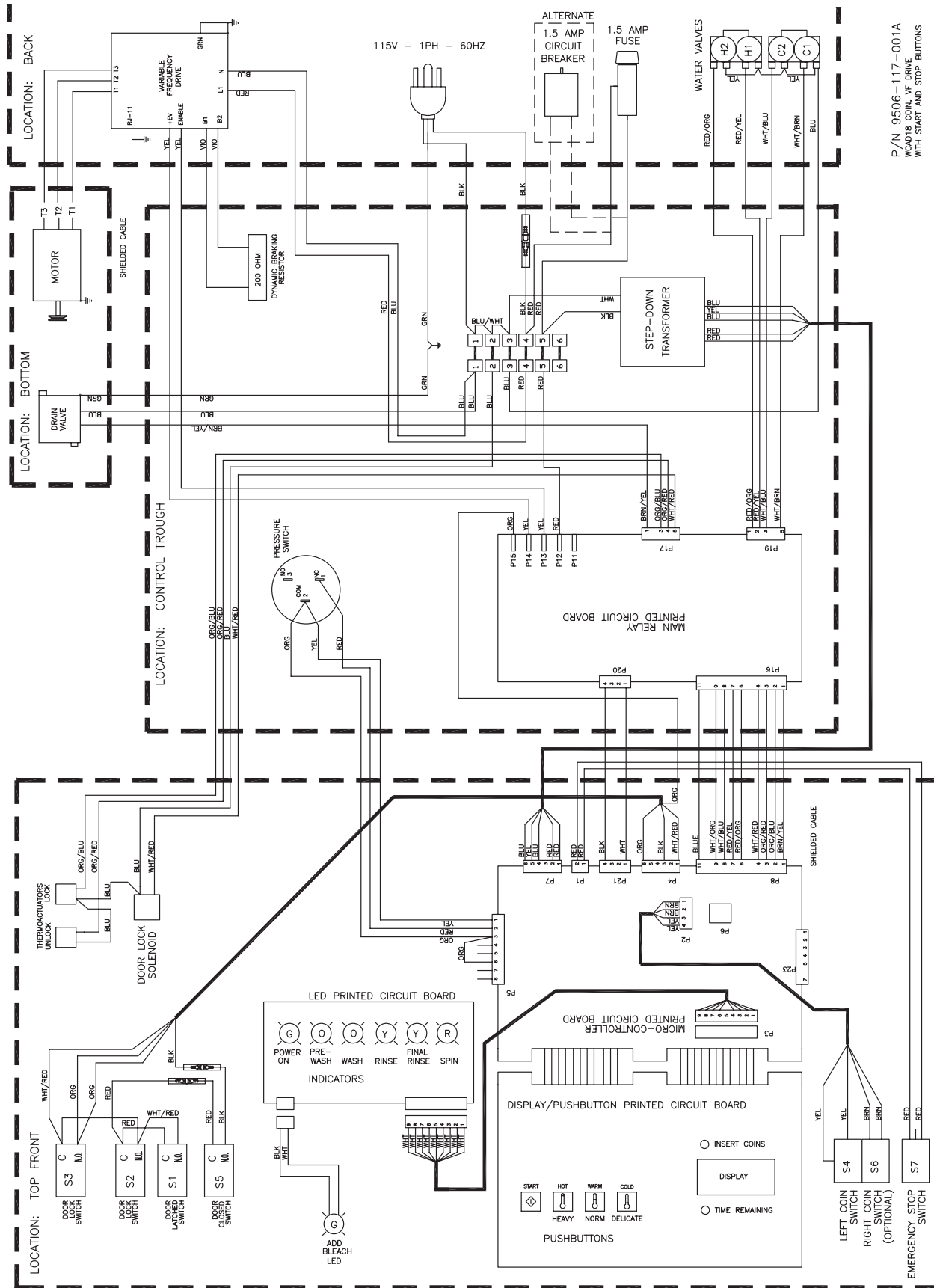


Coin Double Load 20 Pound 120 Volt Wiring Schematic



P/N 9506-116-001A
18 LB MICRO CONTROLLER
DELTA VF DRIVE SYSTEM
WITH START AND STOP BUTTONS

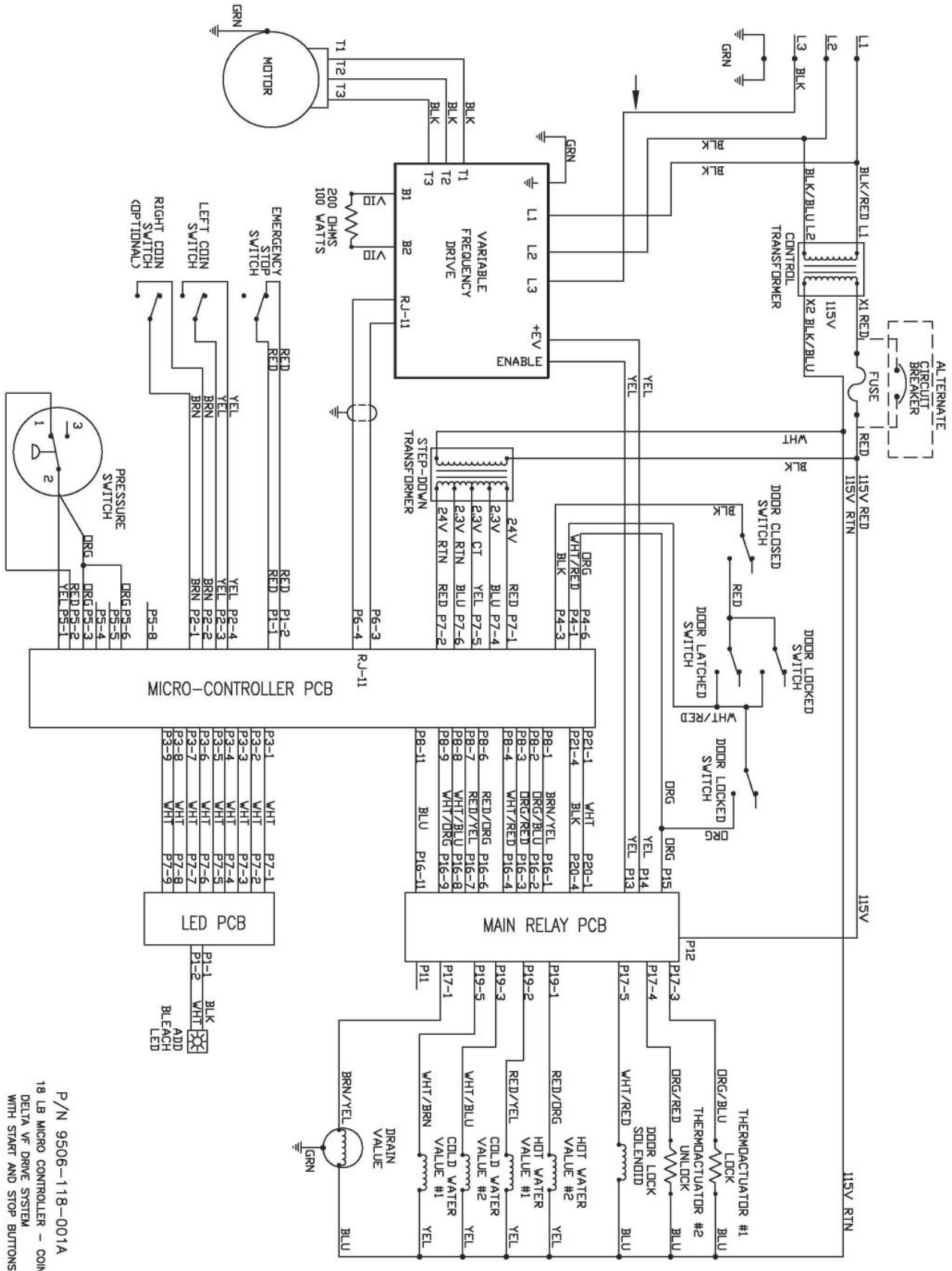
Coin Double Load 20 Pound 120 Volt Wiring Diagram



P/N 9506-117-001A
WCA018 COIN, V-F DRIVE
WITH START AND STOP BUTTONS

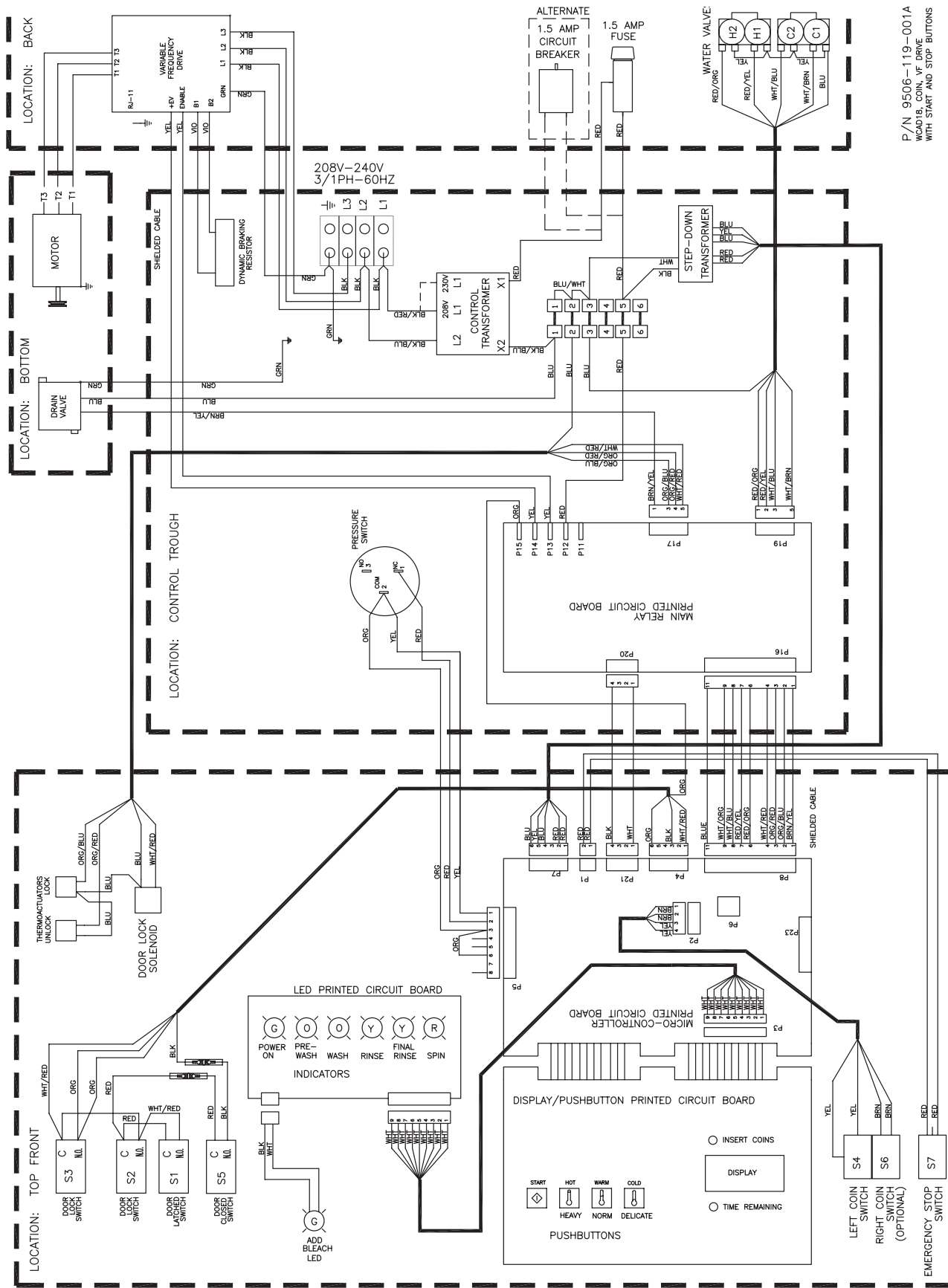
Coin Double Load 20 Pound 208-240 Volt Wiring Schematic

208-240V-3PH OR 1PH-60HZ



P/N 9506-118-001A
18 LB MICRO CONTROLLER - COIN
DELTA VFD DRIVE SYSTEM
WITH START AND STOP BUTTONS

Coin Double Load 20 Pound 208-240 Volt Wiring Diagram



P/N 9506-119-001A
W/ADIS, COIN, VF DRIVE
WITH START AND STOP BUTTONS