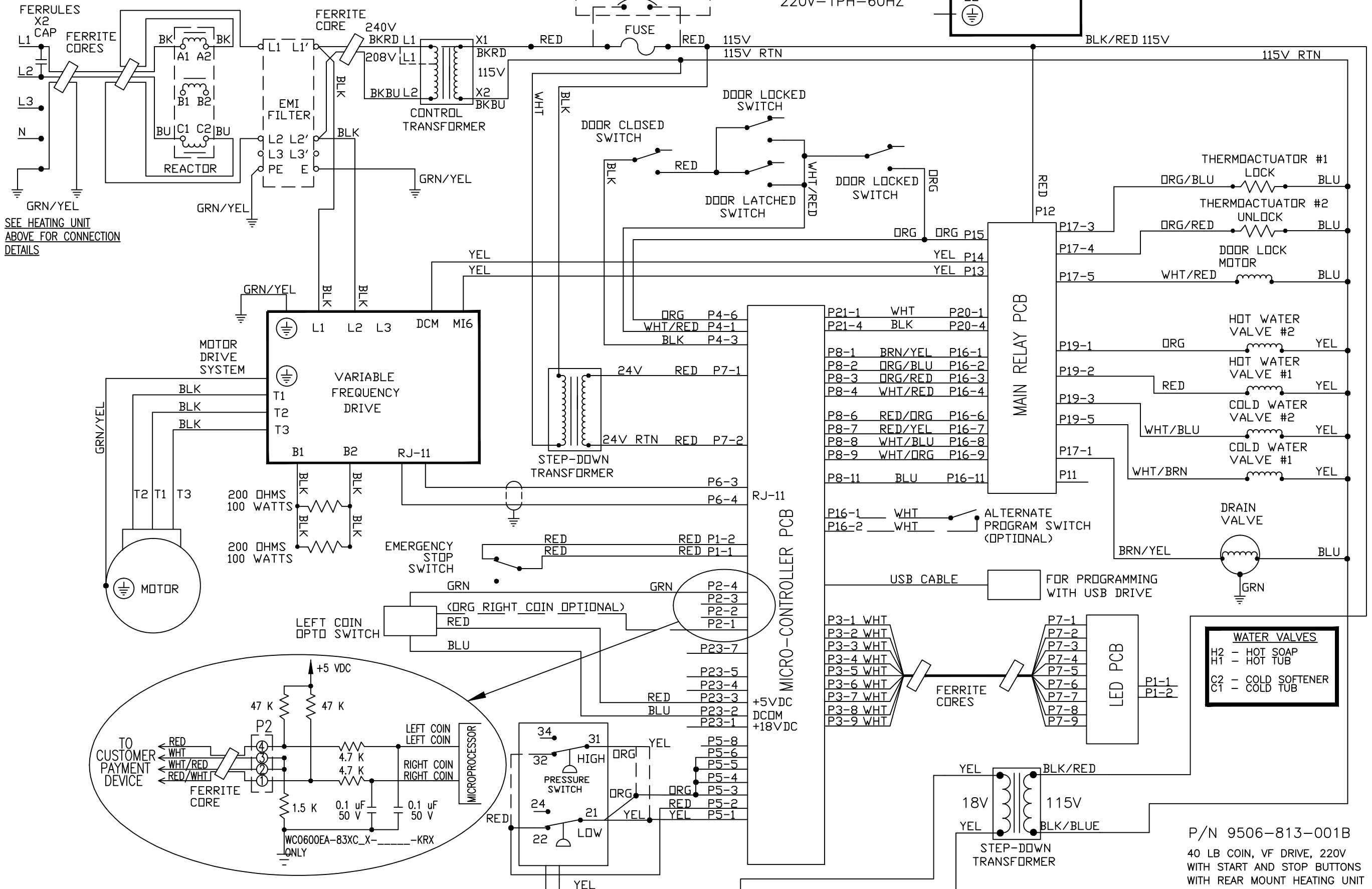


MAIN WASHER CONNECTION
 220V-1PH-60HZ
 L3 NOT USED FOR 1PH POWER

HEATER CONNECTION
 220V-1PH-60HZ



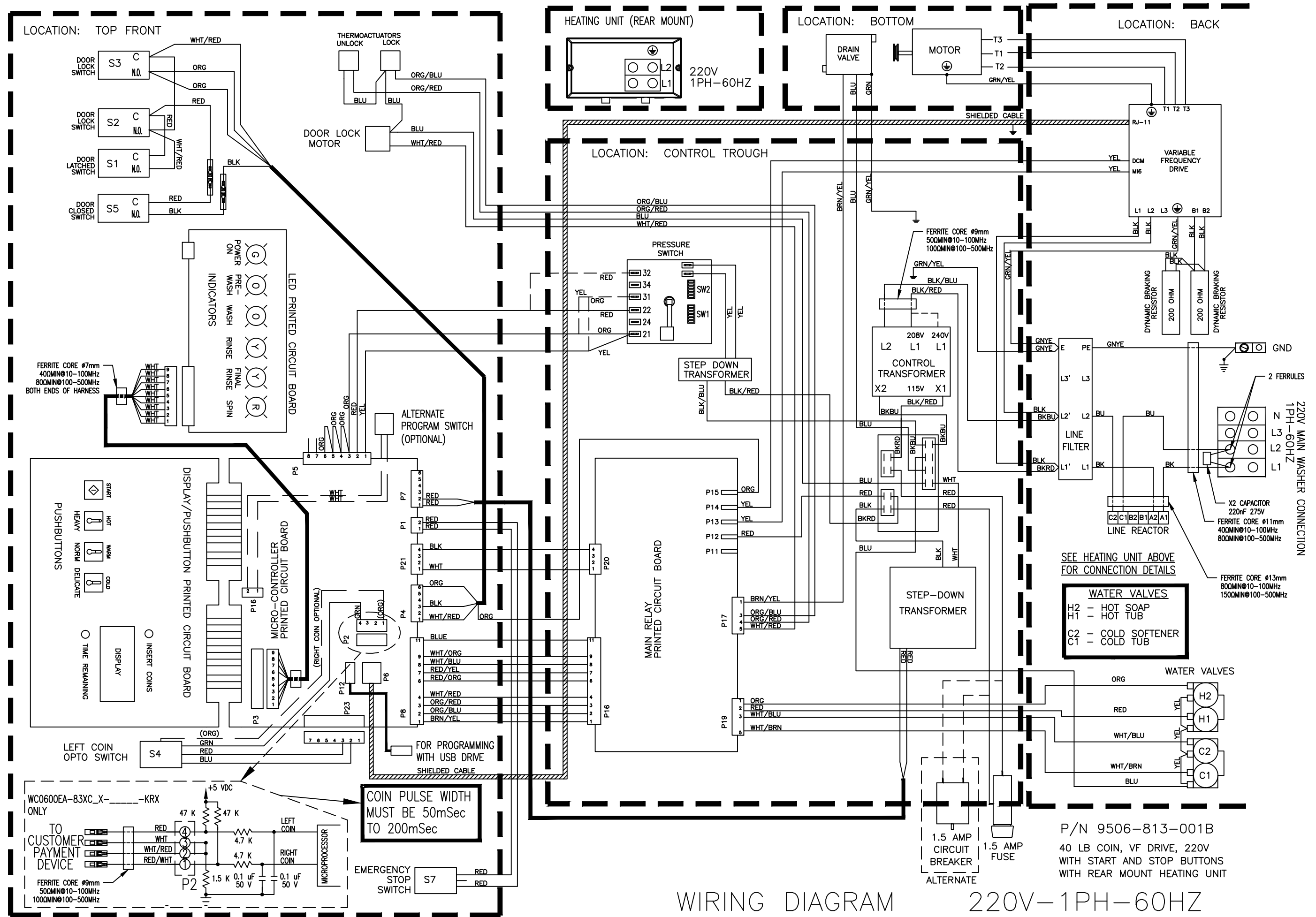
COIN PULSE WIDTH MUST BE BETWEEN 50mSec AND 200mSec

SCHEMATIC

220V-1PH-60HZ

P/N 9506-813-001B
 40 LB COIN, VF DRIVE, 220V
 WITH START AND STOP BUTTONS
 WITH REAR MOUNT HEATING UNIT

WATER VALVES
 H2 - HOT SOAP
 H1 - HOT TUB
 C2 - COLD SOFTENER
 C1 - COLD TUB



WIRING DIAGRAM

220V-1PH-60HZ

SEE HEATING UNIT ABOVE FOR CONNECTION DETAILS

WATER VALVES
 H2 - HOT SOAP
 H1 - HOT TUB
 C2 - COLD SOFTENER
 C1 - COLD TUB

P/N 9506-813-001B
 40 LB COIN, VF DRIVE, 220V
 WITH START AND STOP BUTTONS
 WITH REAR MOUNT HEATING UNIT

COIN PULSE WIDTH
 MUST BE 50mSec
 TO 200mSec

FERRITE CORE #7mm
 400MIN@10-100MHZ
 800MIN@100-500MHZ
 BOTH ENDS OF HARNESS

X2 CAPACITOR
 220mF 275V
 FERRITE CORE #11mm
 400MIN@10-100MHZ
 800MIN@100-500MHZ

FERRITE CORE #13mm
 800MIN@10-100MHZ
 1500MIN@100-500MHZ

220V MAIN WASHER CONNECTION
 1PH-60HZ