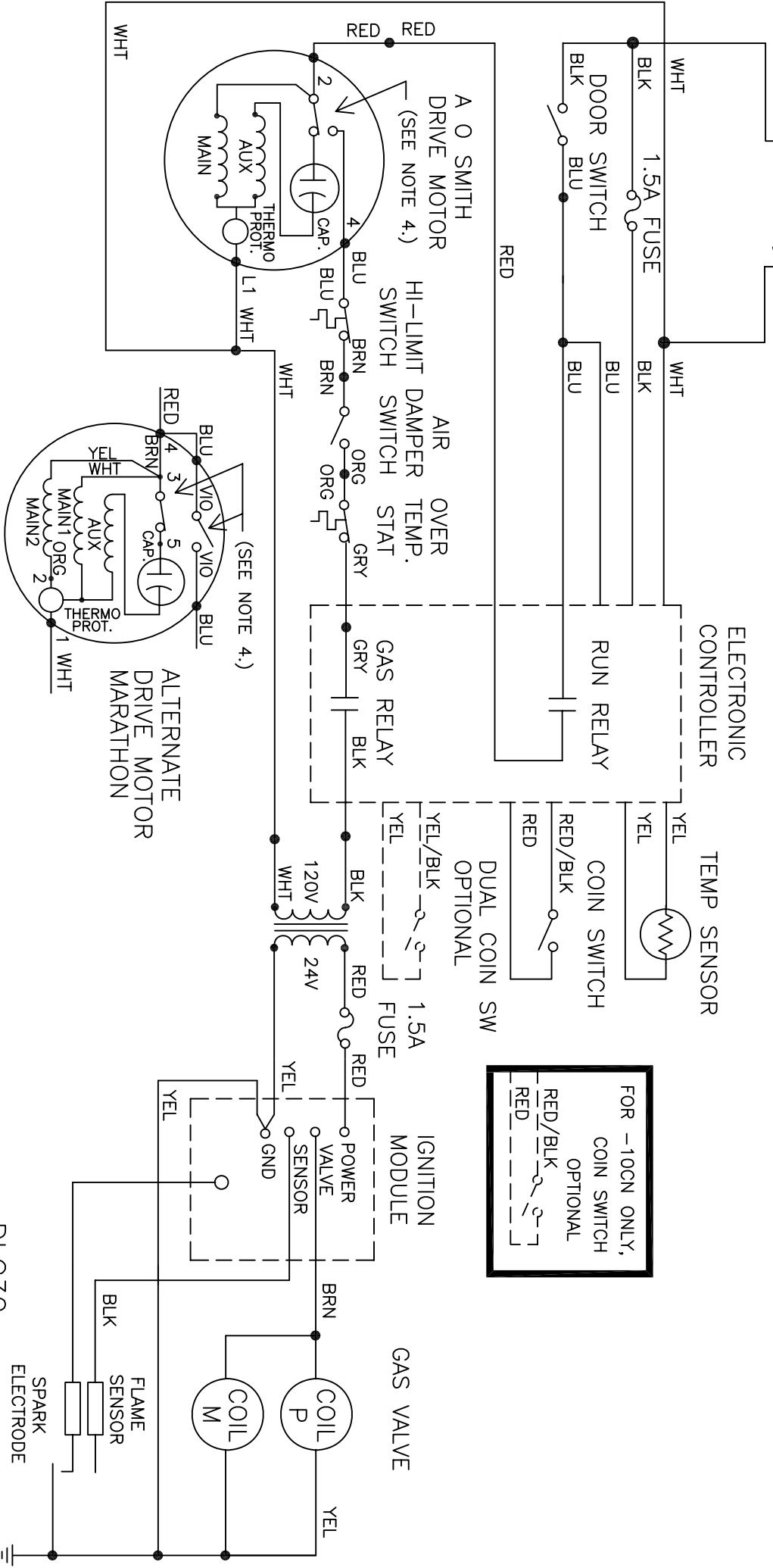


120V-60HZ  
L1 L2  
(NEUTRAL)  
GND

NOTES:

1. COIN SWITCH-N.O.,CLOSED WHEN COIN INSERTED.
2. DOOR SWITCH-N.O.,CLOSED WHEN DOOR IS CLOSED.
3. MOTOR RUN RELAY CONTACT WILL CLOSE WHEN THE COIN COUNT IS SATISFIED,THE DOOR CLOSED AND THE START BUTTON PRESSED.
4. CENTRIFUGAL SWITCH(ES)-CONTACT CHANGES POSITION WHEN MOTOR IS UP TO SPEED.
5. REFER TO OWNER'S MANUAL FOR DESCRIPTION OF OPERATION AND REQUIREMENTS FOR HEATING CIRCUIT.



FOR -10CN ONLY,  
COIN SWITCH  
OPTIONAL  
RED/BLK  
RED