

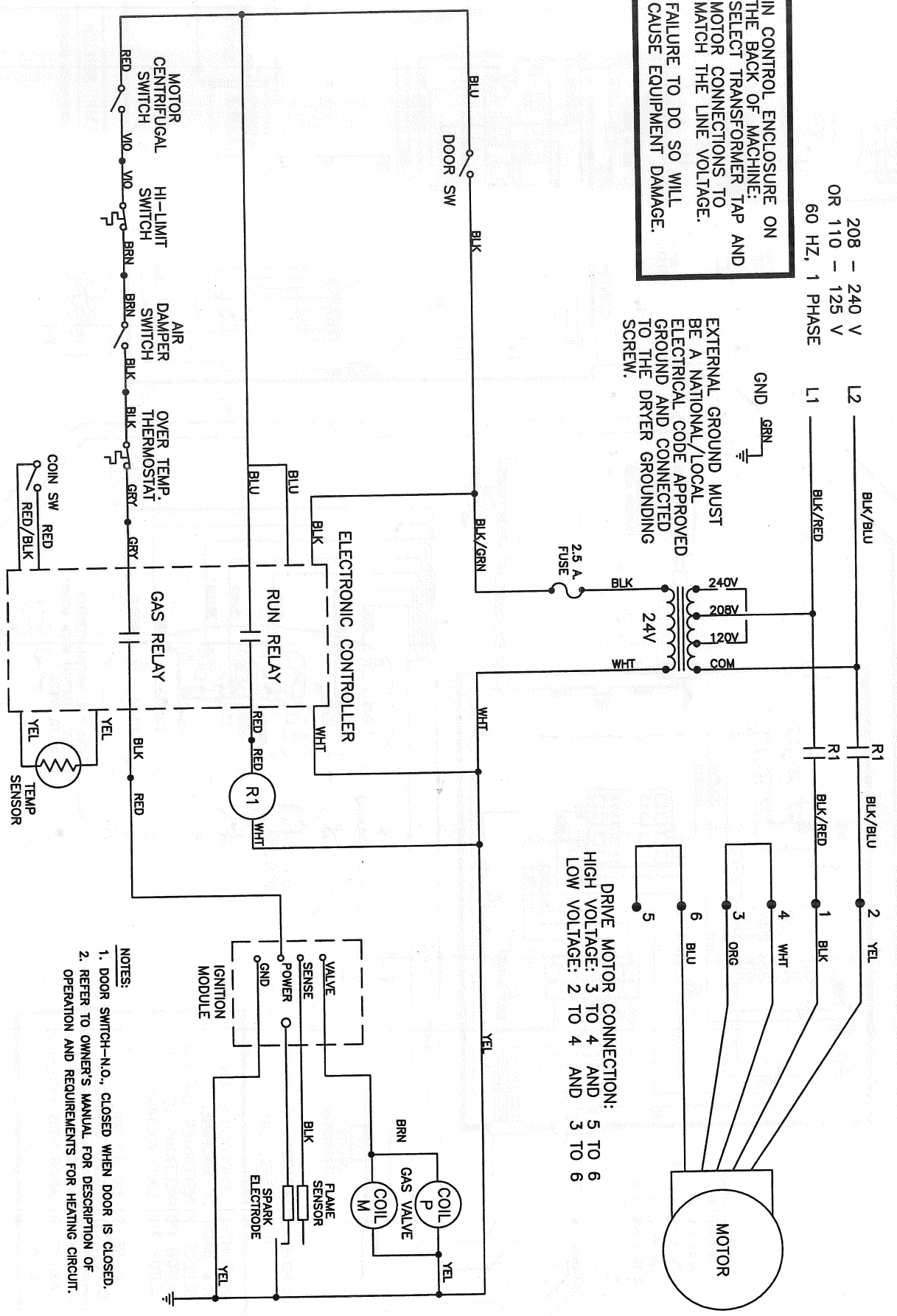
WIRING DIAGRAM DTCK80
 9345-982-001C

IN CONTROL ENCLOSURE ON THE BACK OF MACHINE: SELECT TRANSFORMER TAP AND MOTOR CONNECTIONS TO MATCH THE LINE VOLTAGE. FAILURE TO DO SO WILL CAUSE EQUIPMENT DAMAGE.

208 - 240 V
OR 110 - 125 V
60 HZ, 1 PHASE

EXTERNAL GROUND MUST BE A NATIONAL/LOCAL ELECTRICAL CODE APPROVED GROUND AND CONNECTED TO THE DRYER GROUNDING SCREW.

DRIVE MOTOR CONNECTION:
HIGH VOLTAGE: 3 TO 4 AND 5 TO 6
LOW VOLTAGE: 2 TO 4 AND 3 TO 6



- NOTES:
1. DOOR SWITCH--N.O., CLOSED WHEN DOOR IS CLOSED.
 2. REFER TO OWNER'S MANUAL FOR DESCRIPTION OF OPERATION AND REQUIREMENTS FOR HEATING CIRCUIT.

9345-981-001A

SCHEMATIC

DTCK80