

## Section 2

### SEQUENCE CHARTS AND WIRING DIAGRAMS

#### THE TIMER SEQUENCE CHART

The timer sequence charts are used in conjunction with the wiring diagrams to trace the circuitry during the timer cycle.

The timer contacts and the operation or component that each contact controls are listed across the top of the chart.

The phases of the complete cycle are shown down the left-hand side of the chart.

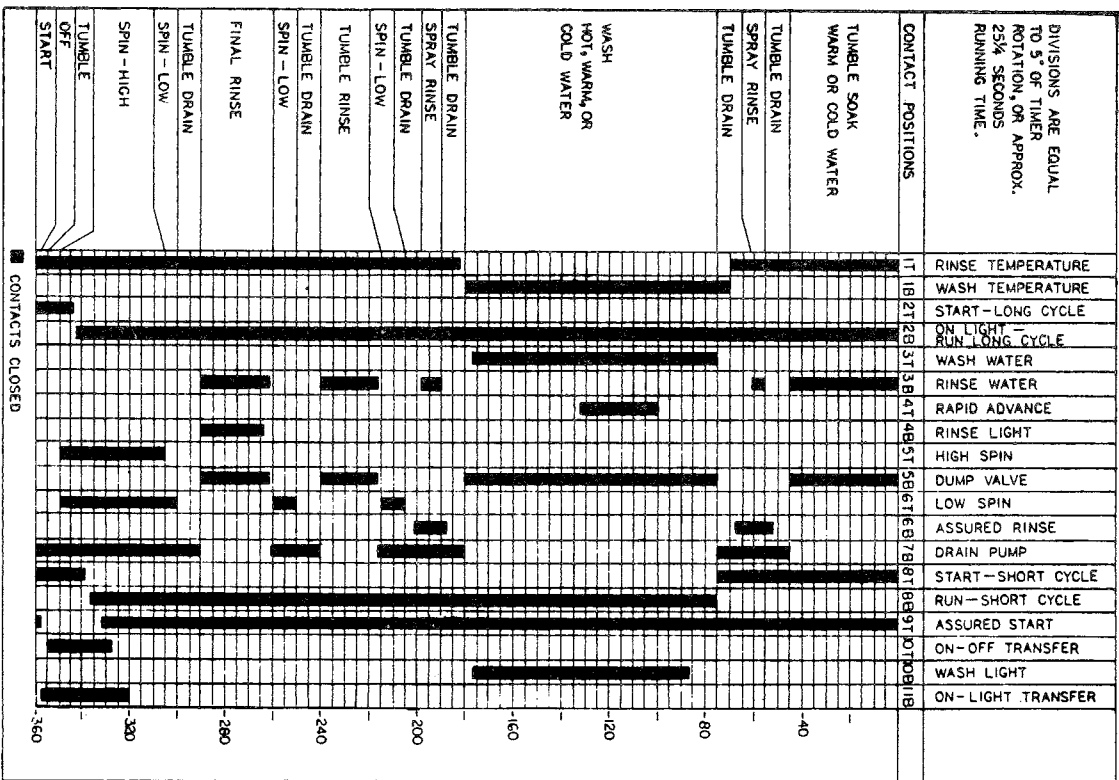
The timer switch steps, or increments, are numbered down in the right-hand side of the chart.

The solid vertical bars in the chart denote when the various contacts are closed during the cycle.

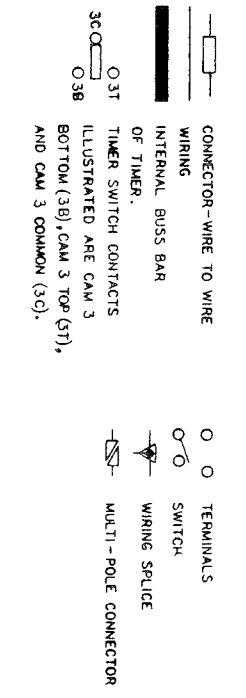
#### To use the sequence chart to trace the circuitry:

1. Locate the particular phase or step of the cycle on the sequence chart.
2. Determine which timer contacts are closed during that particular step of the cycle by noting the solid vertical bars in that step across the chart.
3. Fill in the gap of the respective contacts on the wiring diagram with a soft dark pencil, to thus illustrate the contacts as being closed.
4. Similarly, determine which switch contacts are closed, by the switch chart, and illustrate them as closed on the wiring diagram.
5. The circuitry during the particular step of the cycle may then be easily traced on the wiring diagram, since all contacts and switches are then properly illustrated as being open or closed.

# TIMER SWITCH SEQUENCE CHART



## LEGEND



### TEMP SELECTOR SWITCH

| TEMPERATURE WASH-RINSE | SWITCH CONTACT |
|------------------------|----------------|
| HOT-WARM               | 1 0.5 4.0      |
| WARM-WARM              | 1 0.5 3.20     |
| COLD-COLD              | 1 0.5 2.0      |
| WARM-COLD              | 1 0.5 4.0      |
| HOT-COLD               | 1 0.5 4.0      |

