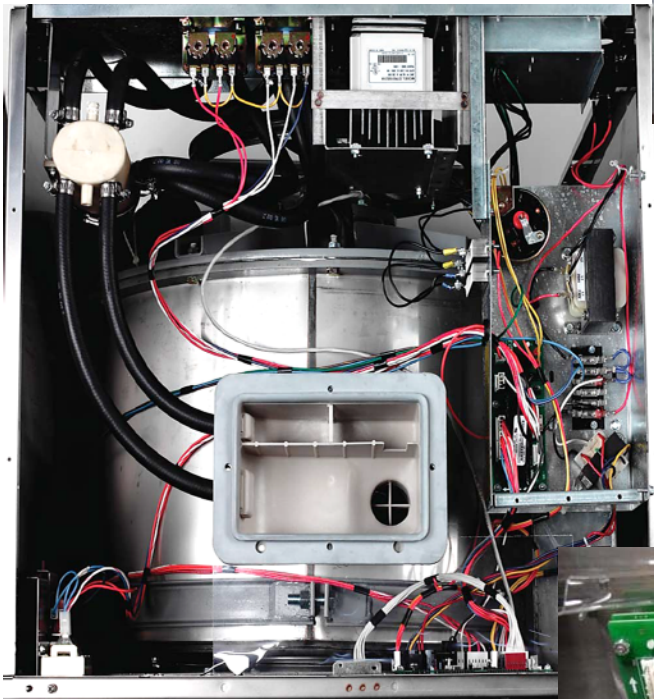


CHECKING DATA CABLE CONNECTIONS



Step 1 – Shut off power.

Step 2 – Remove top panel & VFD cover

Step 3 – Check data cable connections

- The data cable connects to the VFD and PCB control board.
- On the VFD the data cable is located in the lower right hand side of VFD. Check for corrosion, loose, or broken connections and replace if damaged.
- On the PCB control the data cable is located in the lower left hand corner of the PCB. Check for corrosion, loose, or broken connections and replace if damaged.

